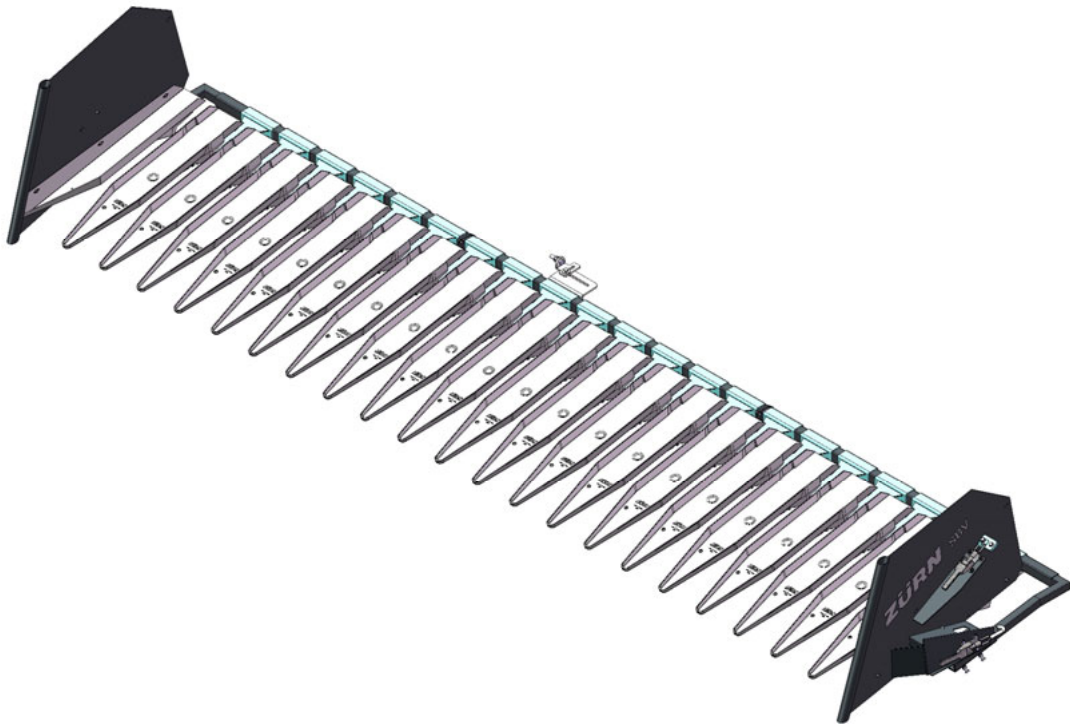




FITTING INSTRUCTIONS AND PARTS LIST

SBV Sunflower Extension



For New Holland & Case cutting platforms

New Holland High Capacity / Case 2030

New Holland Extra Capacity / Case 2040

New Holland Varifeed / Case 2050

New Holland Varifeed HD / Case 3050

Masthead

Title: Fitting instructions and parts list sunflower extensions
Manufacturer: Zürn Harvesting GmbH & Co. KG
Schöntal

Applicable to: SBV for New Holland HC
SBV for New Holland EC
SBV for New Holland VF
SBV for New Holland VF-HD

SBV for Case 2030
SBV for Case 2040
SBV for Case 2050
SBV for Case 3050

Print number: 41044

3rd issue 2024 (Version C)

Editorial date 01/2024

© Zürn Harvesting GmbH & Co. KG

Author: Naiome Köllisch

All rights reserved, also applies to the translation.

No part of this operating manual must be reproduced in any form (print, photocopy or any other process) or processed, duplicated or distributed using electronic systems without the written permission of the Zürn Harvesting GmbH & Co. KG, Schöntal.

We reserve the right to make technical amendments.

Printed on paper made from chlorine-free and acid-free bleached pulp.

Foreword

This machine is designed only for the usual application in agricultural work or similar activities. Any other use beyond this is deemed improper use of the machine. The manufacturer accepts no liability whatsoever for damage resulting from improper use; the risk will be borne solely by the user. Proper use also includes complying with the operation, maintenance and service conditions specified by the manufacturer.

Read this operating manual thoroughly to familiarise yourself with the correct operation and maintenance of the machine and to prevent injuries or damage to the machine. Not doing so can result in injuries or machine damage. This operating manual and the safety labels on the machine may also be available in other languages: please enquire at your dealership.

This operating manual is part of the machine and should be handed over to the purchaser if the machine is re-sold.

Dimensions specified in this operating manual are metric. Use only appropriate parts and bolts. Different spanners are required for metric bolts and bolts with imperial (inch) dimensions.

The designations "left" and "right" are with reference to the forward direction of the machine.

Enter the serial number in the first section of the operating manual. Please record all numbers accurately. In case of theft, these numbers can be important for tracing the machine. Your dealer also needs these numbers when you order spare parts. It is a good idea to keep a second record of these numbers in another location.

Your dealer has carried out an inspection of the machine prior to delivery. A further inspection should be carried out by your dealer after the first 20 to 50 hours of operation in order to ensure the best possible performance for the machine.

This machine must only be used, serviced and repaired by persons who are familiar with it and who have been briefed about its hazards. The relevant accident prevention regulations and other generally recognized rules and laws for safety, occupational health and road traffic must also be observed. Unauthorized changes to this trailer release the manufacturer from liability for any resulting damage.

Contents

Masthead	2
Foreword	3
Contents	4
Type Plates	6
Safety Instructions	7
Safety instructions for technical staff and operators	8
Hydraulic system	9
Universal drive shafts	10
Ejection of stones and foreign objects	11
Precautions for use and shunting	12
Precautions for maintenance and repair work	12
Precautions for travelling on public roads	13
Modifications to the machine	14
Welding	14
Bolted assemblies	14
Using original parts	15
Waste prevention	15
Safety decals	16
Important information	19
Assembly instructions	20
Preparing the header for attaching the sunflower extension	20
Assembling the supporting bars	21
Attaching the side plates	23
Attaching the sunflower extension to the header	24
Fitting the pan holders	32
Installing the central support	33
Installing the central support	34
Mounting the central pans	35
Attaching the outboard pans and aligning the side plates	39
Attaching the side plates and the supporting arms	44
Installing the reel boards	45
Installing the reel support to a New Holland VF+VF-HD / Case 2050+3050	47
Attachment and removal of the assembled sunflower extension	48
Removing the extension from the header	48
Attaching the extension to the header	48
Parts list	50
Side plates (left side) on New Holland HC-EC / Case 2030-2040	50
Side plates (right side) on New Holland HC-EC / Case 2030-2040	51
Side plates (left side) on New Holland VF Standard / Case 2050	52
Side plates (right) on New Holland VF Standard / Case 2050	53
Side plates (left) on New Holland VF HD / Case 3050	54
Side plates (right) on New Holland VF HD / Case 3050	55

Supporting arms and bars.....	56
Supporting bars.....	58
Reel boards for NH-HC/EC/VF Standard + Case 2030/2040/2050.....	60
Reel boards for New Holland VF HD / Case 3050.....	61
Plastic pans - New Holland HC/EC/VF + Case 2030/2040/2050	62
Plastic pans - New Holland HD + Case 3050	63
Plastic pans - universal	64
Outboard pans left and right - HC/EC/VF Standard + Case 2030/2040/2050.....	66
Outboard pans left and right - New Holland HD + Case 3050.....	67
Finger covers - New Holland HC/EC/VF + Case 2030/2040/2050.....	68
Finger covers - New Holland HD + Case 3050.....	69
Overview assemblies finger covers	71
Accessory pack - New Holland HC/EC + Case 2030/2040	72
Accessory pack - New Holland VF + Case 2050.....	73
Accessory pack - New Holland HD + Case 3050	74
Central support	75
Reel supports set.....	76
Torques for Metric Bolts	77
General terms of guarantee	78
EG- Konformitätserklärung	80
Contacts	81

Type Plates

Please make a note of the type designation and serial number of your machine here. This information must be given to the authorised dealer when ordering spare parts or making guarantee enquiries.

Type: _____

Serial number: _____



Safety Instructions

Explaining the symbols used in this document

This symbol indicates a potentially hazardous situation which, if not avoided, may lead to personal injury.



This symbol indicates special rules or procedures that need to be observed to avoid machine damage.



This symbol indicates special technical instructions.



The illustrations in this manual are used as examples and may differ from the product. All information and data are subject to change by the manufacturer alone without prior notice.

Safety Instructions

Safety instructions for technical staff and operators

Before using the machine, carefully read and observe all safety rules listed in this manual and observe all decals on the machine.

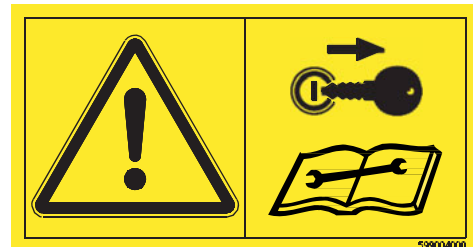
Before starting work, make sure that you are familiar with all mechanisms and controls and their functions. During operation is too late!

Never leave the machine to anyone who has not been trained in using and operating it properly.

Contact your Zürn sales partner if you have problems understanding certain parts of this manual.



Always apply the handbrake on the header transporter and shut off the engine of the towing vehicle before you work on the transporter. Remove the ignition key and wait until all moving parts have come to a complete stop.



Wear close-fitting clothes! Loose clothing can easily get caught in moving machine parts.

Wear protective gear that suits the work at hand (gloves, footwear, goggles, helmet, ear protectors, etc.).

Any ropes, cables, linkages, etc. of remote-controlled mechanisms must be routed and installed in such a way that they do not cause unintentional machine action leading to accidents and damage. This applies to all transport and working positions

Before each use verify that nuts and bolts are tight - especially those that attach tools such as blades. Retighten if necessary.

Before you use the machine make sure all safety features and guards are in place, in protective position and operable. Immediately replace any inoperable safety features.



Safety Instructions

Hydraulic system

Attention! The hydraulic system is under high pressure. Maximum operating pressure: 200 bar (2900 psi).

Before connecting hydraulic hoses to the hydraulic system of the machine, make certain that it is not pressurised. Before disconnecting hydraulic hoses, depressurise the hydraulic system.

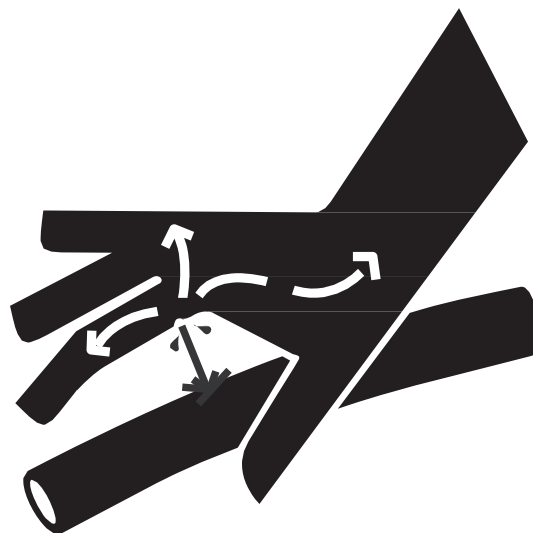
In order to prevent connecting the hydraulic hoses to the wrong connections, colour code the hoses and their respective connections without fail. Risk of injury through reverse function because of reversed connections (e.g. raising instead of lowering).

Inspect the hydraulic hoses at regular intervals. Hydraulic hoses must always be replaced after 5 years at the latest. If hydraulic hoses are found to be damaged or worn, they must be replaced immediately. The replacement hydraulic hoses must comply with the technical requirements specified by the manufacturer.

Only use the appropriate resources when looking for leakages. Protect body and hands against pressurised fluids.

Oil escaping under pressure can puncture the skin and cause severe injuries. In the event of injury, seek medical attention immediately. There is a risk of infection.

Before carrying out any work on the hydraulic system, lower the machine to the ground, depressurise the hydraulic system, switch the engine OFF, remove the ignition key and wait until all moving parts have come to a complete standstill.



Safety Instructions

Universal drive shafts

Only use universal drive shafts that have been provided by or prescribed by the manufacturer.

The protective tube and protective cone on the PTO shaft and all PTO shaft protective devices on the header must be in place and in good condition.

Worn or damaged protective parts must be renewed immediately. Defective protective parts or an unprotected universal drive shaft can cause severe or even fatal injuries.

Always wear close-fitting clothing to prevent being caught up in a rotating universal drive shaft.

Before connecting or disconnecting a universal drive shaft and before any intervention in the header, uncouple the main drive, switch the engine OFF, remove the ignition key and wait until all moving parts have come to a complete standstill.

When using universal drive shafts with and overload or free-wheel clutch, always connect the overload or free-wheel clutch to the machine.

Always make certain that the universal drive shaft is connected and latched in position correctly.

Before switching the PTO shaft ON, make certain that the speed and direction of rotation of the attachment conform with the speed and direction of rotation of the machine specified by the manufacturer.

Before switching the PTO shaft ON, make certain that there are no persons or animals within the machine's danger zone. Never switch the PTO shaft ON or engage it if the forage harvester's motor is switched ON.



Safety Instructions

Ejection of stones and foreign objects

To increase the safety of the driver, only use the header with an enclosed driver's cab. The area to be mown must be free of foreign objects. Stony or rocky ground should not be mowed. If this is unavoidable, additional safety measures must be taken, e.g.:

- Fit Macrolon panels to the floor, sides and rear of the driver's cab or fit finely meshed grilles to the outside.
- Adjust the cutting height such that any contact with stones or rocks is excluded.

Never switch the header ON when persons are standing in the vicinity of the machine.

Foreign objects can be ejected from the machine, even if the machine is in proper use. Stones and other foreign objects that are caught up by rotating parts can be thrown over great distances. Exclude all persons from the danger zone.

The guard plates and protective aprons lessen the risk of stones and foreign objects being ejected. It must therefore be ascertained that all protective devices are fitted and in perfect condition when the header is in use.

Check the state of the protective aprons at regular intervals. Worn, damaged or missing parts must be replaced immediately.



Safety Instructions

Precautions for use and shunting

Before changing over from transport to working position and vice versa, ensure that no persons are within the manoeuvring zone of the machine.

Precautions for maintenance and repair work

Before carrying out any work or intervention, shut off the engine, remove the ignition key, wait until all moving parts have come to a complete standstill and apply the parking brake. Depressurise the hydraulic system.

Prop up and secure any machine parts that are raised for maintenance or repair.

Disconnect all electric lines from the towing vehicle before working on the electric system or before welding on the transporter.

Repairs on parts under strain or pressure (springs, accumulators, etc.) must be carried out solely by specialist staff who have the necessary qualification and special tools.

Wear protective gear that suits the work at hand (gloves, footwear, goggles, helmet, ear protectors, etc.).

Do not weld, solder or use flame cutters near pressurised liquids or highly flammable products.

Only use original spare parts to ensure your personal safety and correct functioning of the machine.

We strongly recommend to have the machine and its parts and fastening elements checked by your authorised Zürn Harvesting sales partner after each season.



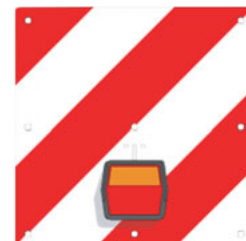
Safety Instructions

Precautions for travelling on public roads

Dimensions

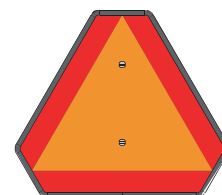
The combination must comply with local requirements relating to maximum dimensions for travel on public roads. In case of doubt, seek information beforehand from the relevant authorities.

If the combination exceeds the maximum dimensions and yet has to be transported on public roads, contact the local authorities to obtain a special permit before you travel on public roads.



Transport position

Before travelling on public roads, place and secure the machine on a suitable transporter, following the instructions in this manual.



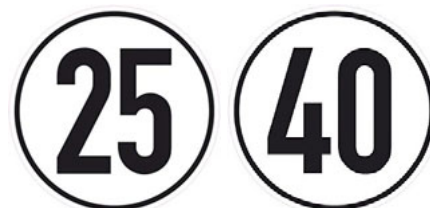
Lights and warning devices

Before travelling on public roads, ensure that all required lights and warning panels are in place.

Check these devices for proper functioning and visibility. Replace any missing or damaged parts immediately.

Maximum speed

Always comply with the current regulations regarding speed limits on public roads.



When travelling on public roads, always comply with the relevant regulations.

Before travelling on public roads and before each use check the header transporter and the towing vehicle for road safety and operational safety!



Safety Instructions

Modifications to the machine

Any modifications to the machine and its optional features must be approved in writing by the manufacturer. The warranty and product liability will be voided, if such modifications are carried out without the written approval of the manufacturer.

The manufacturer's liability refers to the original condition in which the vehicle is delivered to the country of destination as contractually agreed by the manufacturer.

Any unauthorised modifications to this machine render any manufacturer liability for any consequential damage null and void.

Welding

Ensure that any type of welding is carried out by qualified and certified welders. Welding must not affect the warranted properties of the steel structure. In case of non-compliance, the manufacturer shall consider the weldment as an unauthorised modification to the transporter.

Bolted assemblies

Observe the property class when fastening and replacing bolts and nuts (see the table in this manual and the parts list).

After assembling the transporter, tighten all bolts to the proper torque.

For special torques read the assembly instructions or ask the manufacturer.

For any torques of regular bolts refer to the table.

Self-clinching bolts and nuts must be replaced by new ones after they have been removed during a repair.

This is necessary as nuts with a self-clinching fastener lose their holding power with each reuse.

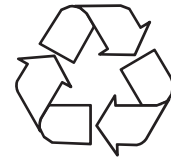
Safety Instructions

Using original parts

Only use original parts sourced from the manufacturer. This is mandatory. Using third-party parts voids the manufacturer warranty including for consequential damage resulting from this.

Waste prevention

Never pour environmentally hazardous products (oils, greases, filters, etc.) into a sink or empty them onto the ground or in other spaces. Never burn or throw away used tyres. Have waste disposed of by specialised disposal companies.



Safety Instructions

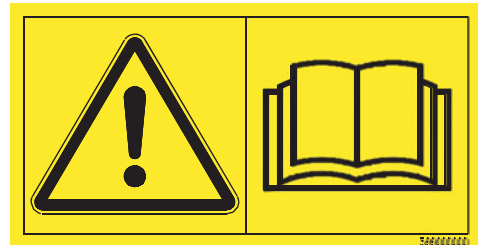
Safety decals

Safety decals are placed in various locations on the machine. Always follow these instructions! The decals alert operators to potential hazards and provide rules of practice to cut out any risk of an accident.

Keep the safety decals clean and legible and replace them immediately when damaged, worn or lost.

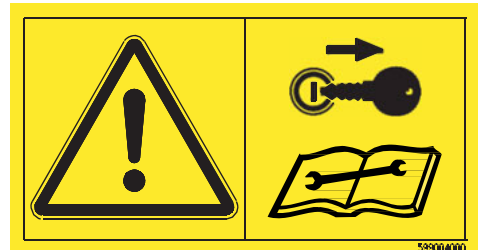
Operating instructions

The operating instructions contain all the necessary information for the safe use of the machine. To avoid the risk of accidents, read the operating instructions carefully and follow all instructions.



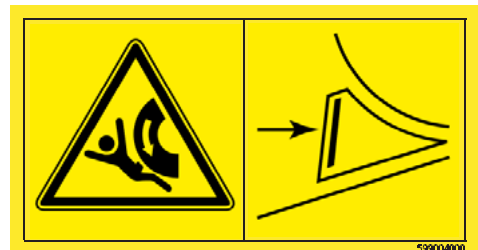
Working on and intervening in the header

Before carrying out any type of work on or intervention in the header, disengage the clutch in the driveline, shut off the engine, remove the ignition key, wait until all moving parts have come to a complete standstill and apply the parking brake.



Parking the transporter

Secure the transporter with a wheel chock before removing it from the towing vehicle or parking it.



Safety Instructions

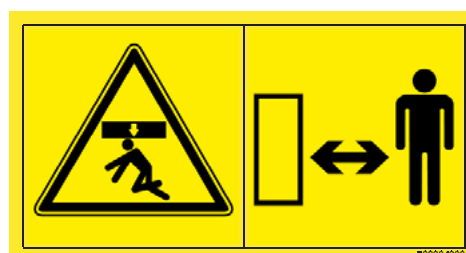
Placing the header on the transporter

When placing the header on the transporter, keep clear of the danger zone between the header and the transporter.



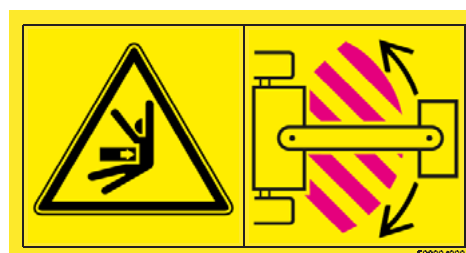
The header is lifted

Keep clear of the header swing area when placing it on the transporter.



Risk of crushing

Keep clear of the drawbar unit and all steering elements (e.g. turntables, steering rods) while operating the machine. Risk of being crushed at a full lock turn.



Retighten the wheel bolts

Retighten the nuts after the first journey.



Safety Instructions

Ejection and foreign objects

Stones and other foreign objects can be thrown out over long distances. The protective devices must always be in place and in a perfect state. Always keep a safe distance from the machine.



Do not open guards

Do not open or remove protective devices during operation or while the engine is running.



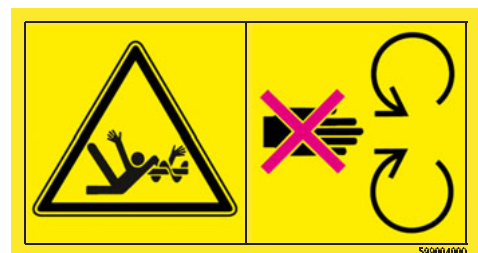
Do not open guards

Do not open or remove protective devices during operation or while the engine is running.



Rotating Auger

Never reach into the rotating auger.



Assembly instructions

Preparing the header for attaching the sunflower extension

Remove the dividers or side knives

Remove the divider tips or side knives from the header.



Position of the variable header

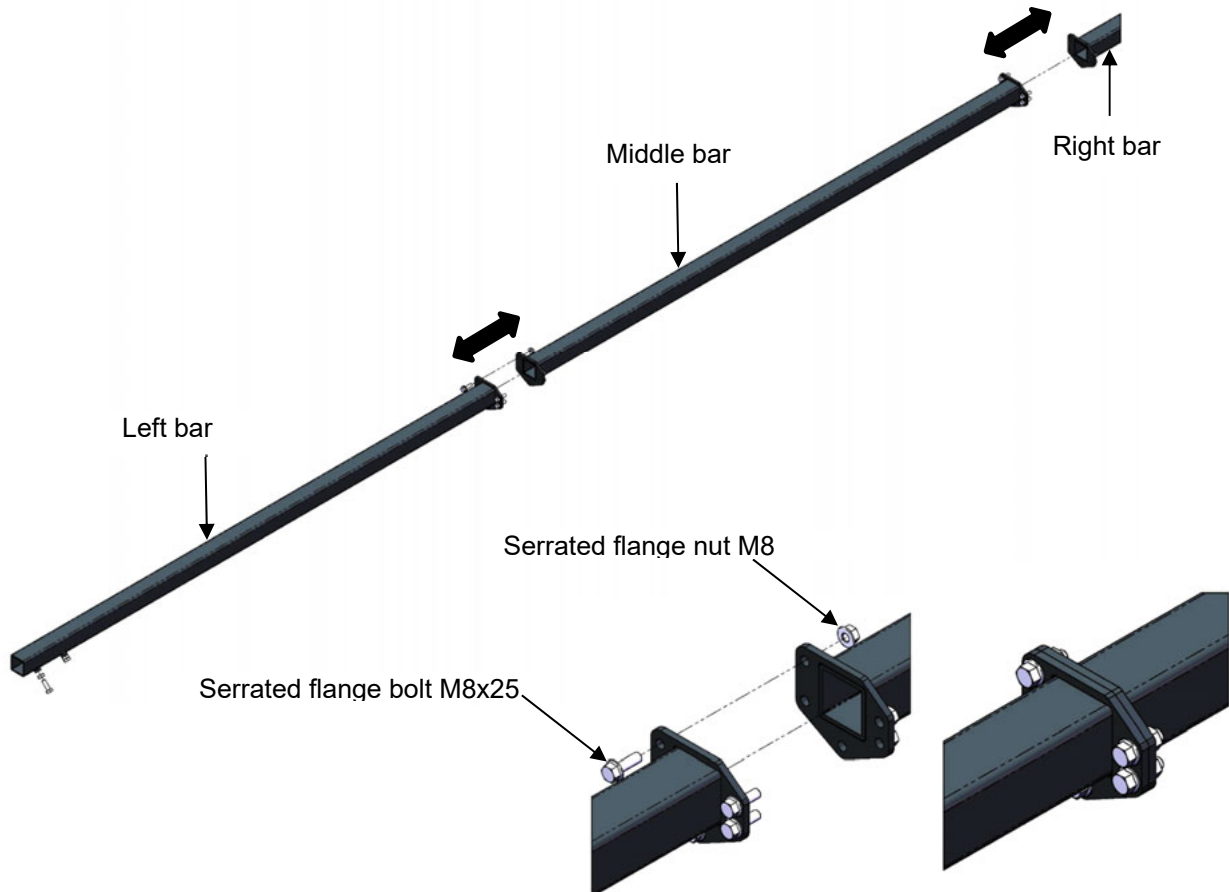
For attaching the sunflower extension, it is necessary to retract the variable part of the header all the way to position 0.



Assembly instructions

Assembling the supporting bars

The individual sections of the supporting bars are bolted together as shown in the illustration below. The flanges are attached with five M8x25 serrated flange bolts and M8 serrated flange nuts.



IMPORTANT!

Ensure the flanged bar ends mate exactly. Put the supporting bars on several stacks of pallets, about waist-high, placed next to each other. This makes it easier to retract the header with the combine.



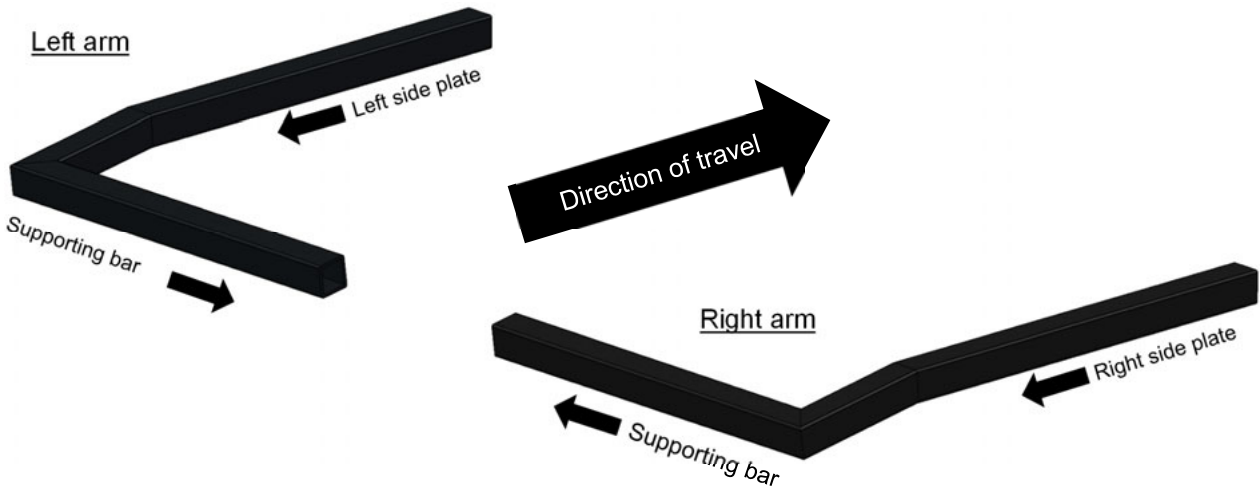
The number and the lengths of the supporting bars vary depending on the header length. For the specific number and dimensions please refer to the tables on pages 56 to 59.



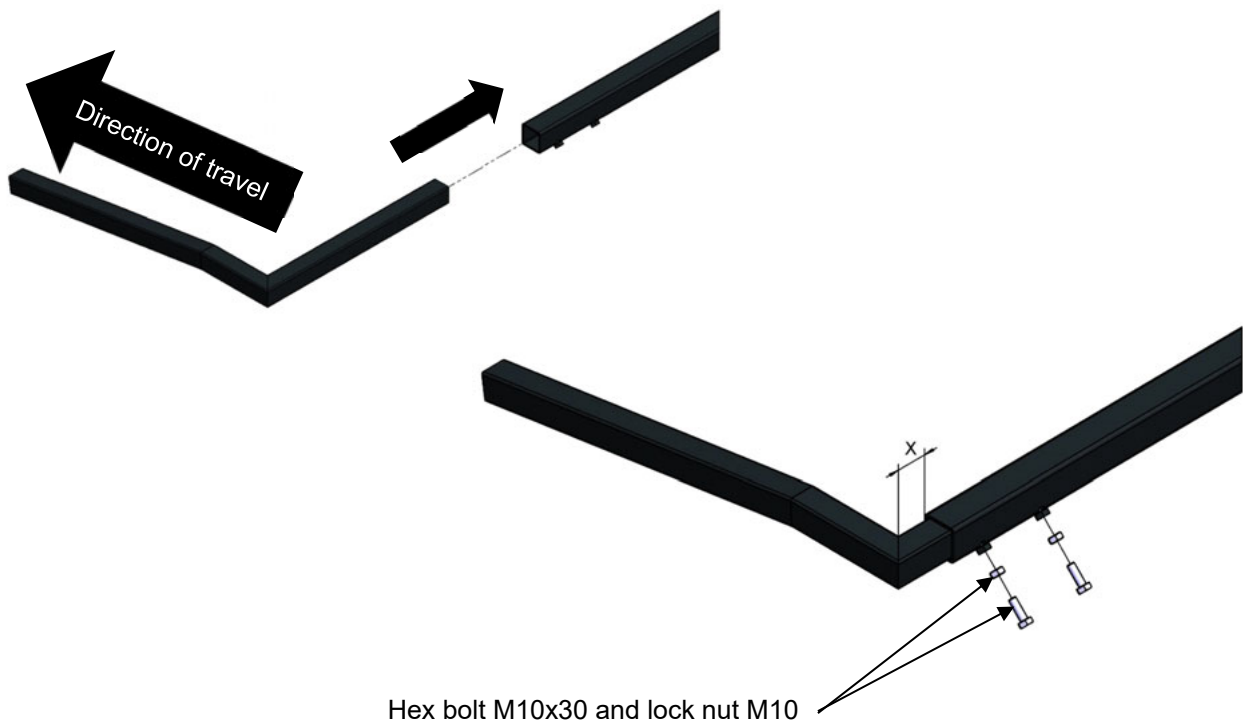
Assembly instructions

Assembling the supporting bars

The two supporting arms are attached to either end of the assembled supporting bar. The left arm is attached with two M10x30 hex bolts and M10 nuts as specified. The right arm is merely pushed into the bar but not bolted down as yet.



The arms are merely loosely attached but not bolted yet. Adjust the distance X on both arms only after the pans have been installed on both sides. Only then secure the supporting arms by tightening the two M10x30 hex head bolts (page 44).



Assembly instructions

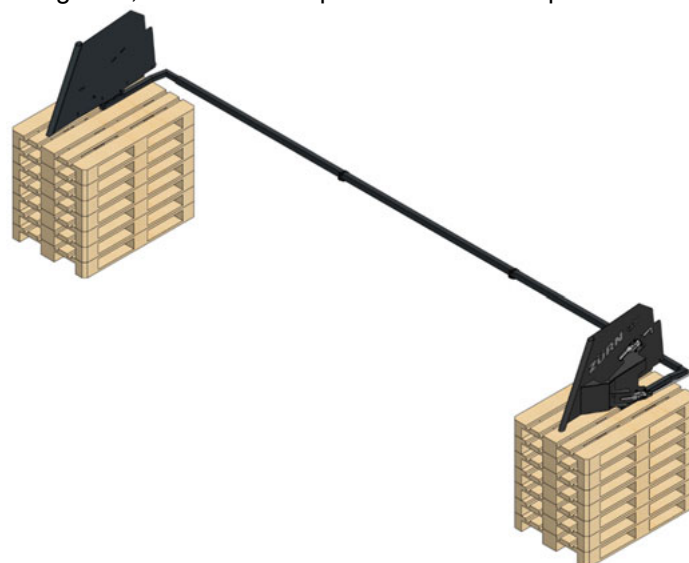
Attaching the side plates



The side plates are pushed as far as possible onto the supporting arms so that the supporting arms protrude forward from the supporting tube.



The assembled supporting bars, arms and side plates on stacks of pallets



Assembly instructions

Attaching the sunflower extension to the header

Attach the header to the combine. Drive forward inserting the header tips into the side plates of the sunflower extension, placed on the pallet stacks.

After the sunflower side plates are on the header, both plates must be secured. For this purpose, fix the side plates to the header sides with clamps or straps.

In order for you to be able to safely retract the two attached side panels with the header, it may be necessary to support the front side parts with wood in order to adapt their position to the ground at the most favourable angle of the header for retraction.

Clamp the left and right side panels to the side walls of the header by means of screw clamps. Make sure that the side parts of the sunflower attachment are parallel and have full contact.

Danger!



Ensure that the side plates of the sunflower extension are properly secured to the header!

Assembly instructions

Preparations on the HD header for attaching the sunflower extension

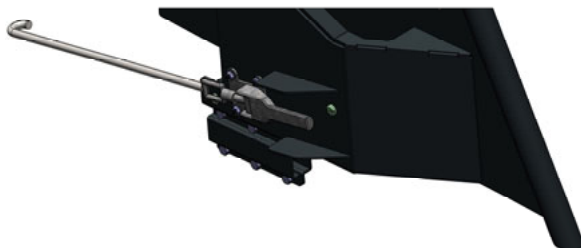
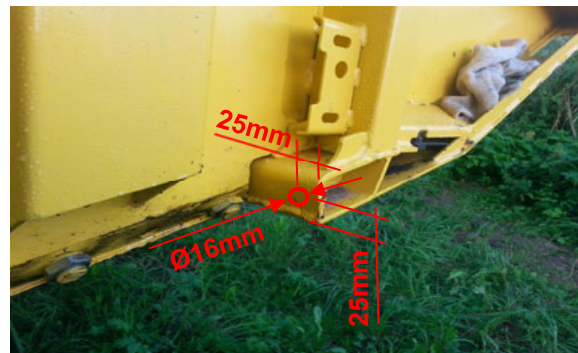
Position of the toggle clamp hook - right-hand side

The top toggle clamp hook is hooked into the attachment pin as shown in the photo.



For the toggle clamp hook at the bottom, drill a 16mm hole in the bottom cross member of the header frame applying the dimensions shown in the photo.

The bottom hook of the right sunflower side plate is hooked into it.



Assembly instructions

Preparations on the HD header for attaching the sunflower extension

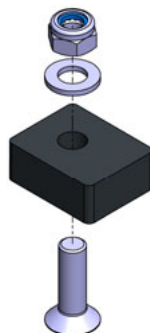
Position of the toggle clamp hook - left-hand side

The hook of the top toggle clamp on the left-hand side is hooked to the attachment pin in the same way as the hook on the right-hand side. See photo.



Another interface must be provided on the header to accommodate the top toggle clamp hook at the bottom. To do this, first attach the bottom hook in the hole behind the cast iron base of the gear holder. Next, align the 40407 hook support in the direction of combine travel and transversely in such a way to the top toggle clamp hook that the hook cannot drop. Ensure the front face of 40407 sticks out approx. 20mm to the front face of the header. Next, mark down the front and rear edges of 40407 on the header and hold 40407 in the same position in direction of travel to the underside of the cross brace of the header frame. Next, drill off the core hole diameters of the two weld nuts of 40407 in the lower cross member of the header frame, drill out the two resulting holes to 10.5mm and finally, on the underside of the header frame, countersink the holes at 90° for the installation of two M10x40 countersunk bolts.

The hook support is now installed in the space between the lower cross member and is fixed with the countersunk bolt

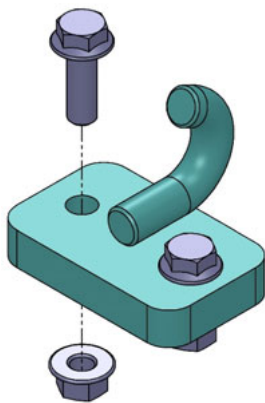


Assembly instructions

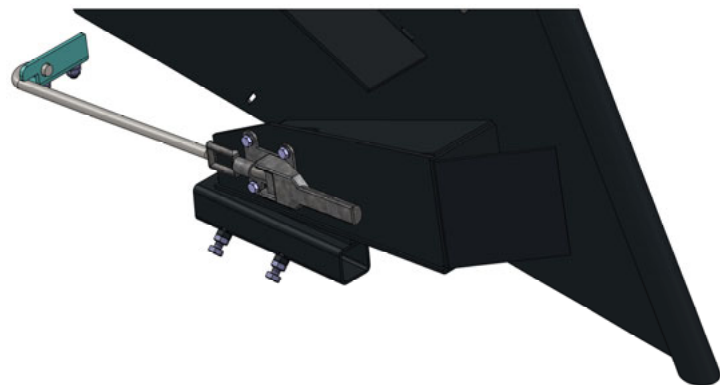
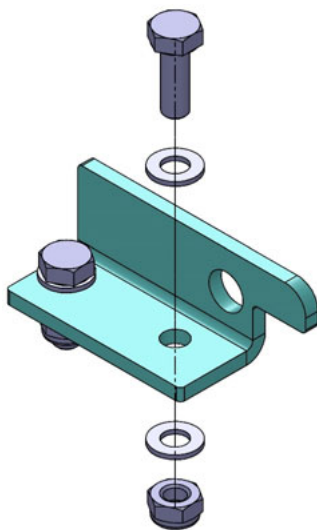
Preparing the HC header for attaching the sunflower extension

Position of the toggle clamp hook - right-hand side

Close the upper toggle clamp and bring the supplied hook 21326 into position. Next, drill two holes into the header in preparation for attaching the hook. Then attach the hook with two M10x30 serrated flange bolts and M10 serrated flange nuts.



Close the toggle clamp at the bottom and bring the supplied angle 22084 into its mounting position. Next, drill two holes in the header in preparation for attaching the hook. Then attach the angle with two M10x30 hex bolts and M10 self-serrated flange nuts.



Assembly instructions

Preparing the HC header for attaching the sunflower extension

Position of the toggle clamp hook - left-hand side

Close the upper toggle clamp and bring the supplied hook 21326 into position. Next, drill two holes into the header in preparation for attaching the hook. Then attach the hook with two M10x30 serrated flange bolts and M10 serrated flange nuts.



The bottom toggle clamp is hooked into place on the back of the slanting web plate. It is not necessary to attach additional interface parts to the header here.

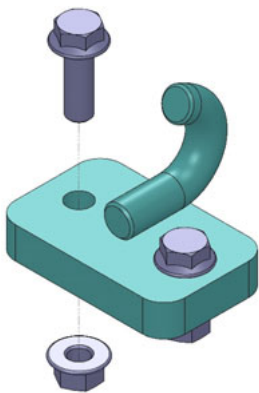


Assembly instructions

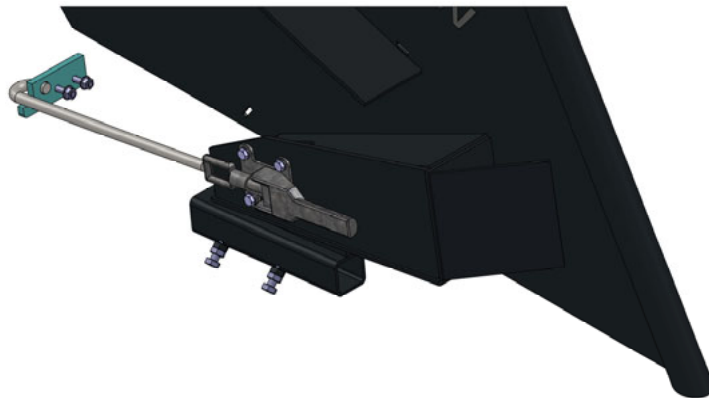
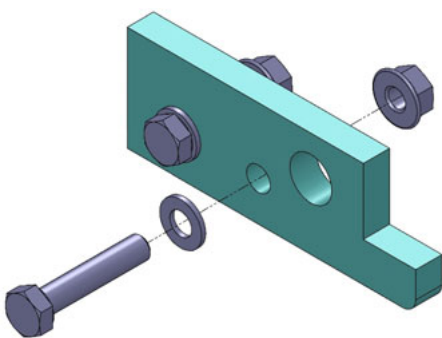
Preparing the VF header for attaching the sunflower extension

Position of the toggle clamp hook - right-hand side

Close the upper toggle clamp and bring the supplied hook 21326 into position. Next, drill two holes into the header in preparation for attaching the hook. Then attach the hook with two M10x30 serrated flange bolts and M10 serrated flange nuts.



Close the bottom toggle clamp and bring the supplied bracket 22009 into position. Next, drill two holes into the header in preparation for attaching the bracket. Then attach the bracket with two M8x40 hex bolts and M8 self-serrated flange nuts.



Assembly instructions

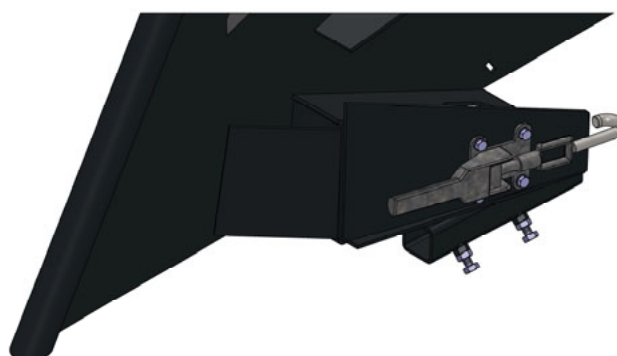
Preparing the VF header for attaching the sunflower extension

Position of the toggle clamp hook - right-hand side

Close the upper toggle clamp and bring the supplied hook 21326 into position. Next, drill two holes into the header in preparation for attaching the hook. Then attach the hook with two M10x30 serrated flange bolts and M10 serrated flange nuts.



The bottom toggle clamp 22114 is hooked into place on the back of the slanting web plate. It is not necessary to attach additional interface parts to the header here.



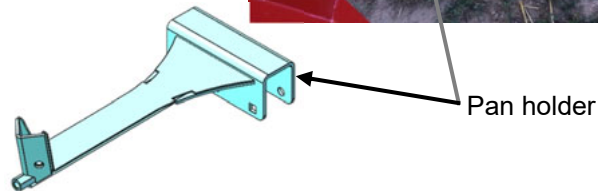
Assembly instructions

Fitting the pan holders

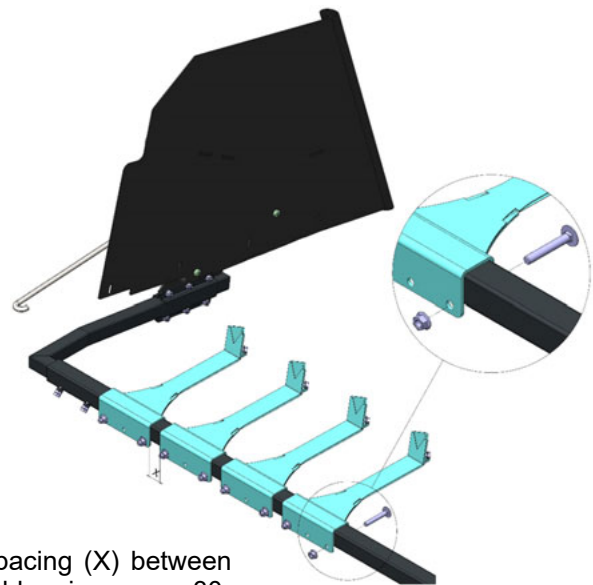
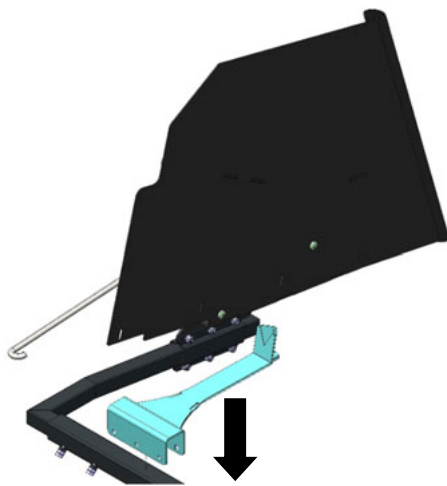
Raise the header to a comfortable height and prop the supporting tube in the middle. Secure the feeder house so it cannot drop. To do this, place the circlip around the ram that operates the feeder house.



Next, starting on the left side, attach the pan holders to the supporting bar. To do so, position the supporting bar in the direction of travel so that the fingers do not collide with the pans. The position of the first pan holder from the left can be found in the laminated overall drawing included in the scope of delivery. Be sure to adhere to this measure. It is essential to comply with this standard.



Place the pan holders on the supporting tubes as shown in the illustration and attach them with two M12x80 carriage bolts and two M12 serrated flange nuts each.



The spacing (X) between two holders is approx. 30-40mm

Note!

Do not yet tighten the serrated flange nuts on the pan holders

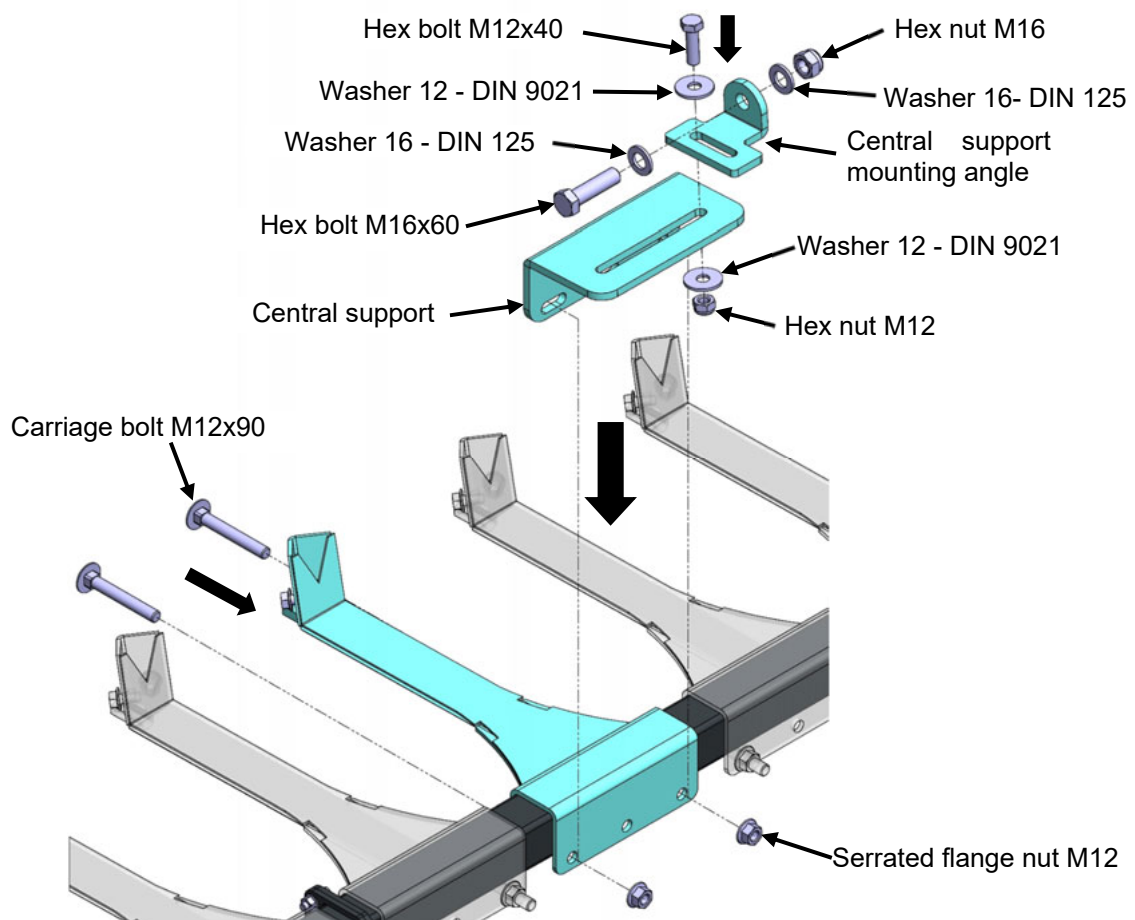
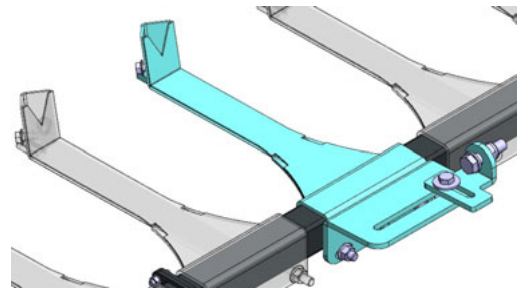


Assembly instructions

Installing the central support

Next, push the supporting bar with the pan holders attached to it under the header. Push it as far as possible and align the pan holders in such a way that the guards contact the pan holder recesses in the middle. Next, tighten the M12 serrated flange nuts of the pan holders. Attach the central support (s) together with the pan holders to the supporting bars. Depending on the header width, the correct position is either in the middle of the header (one central support) or at each of the two-third positions (two central supports).

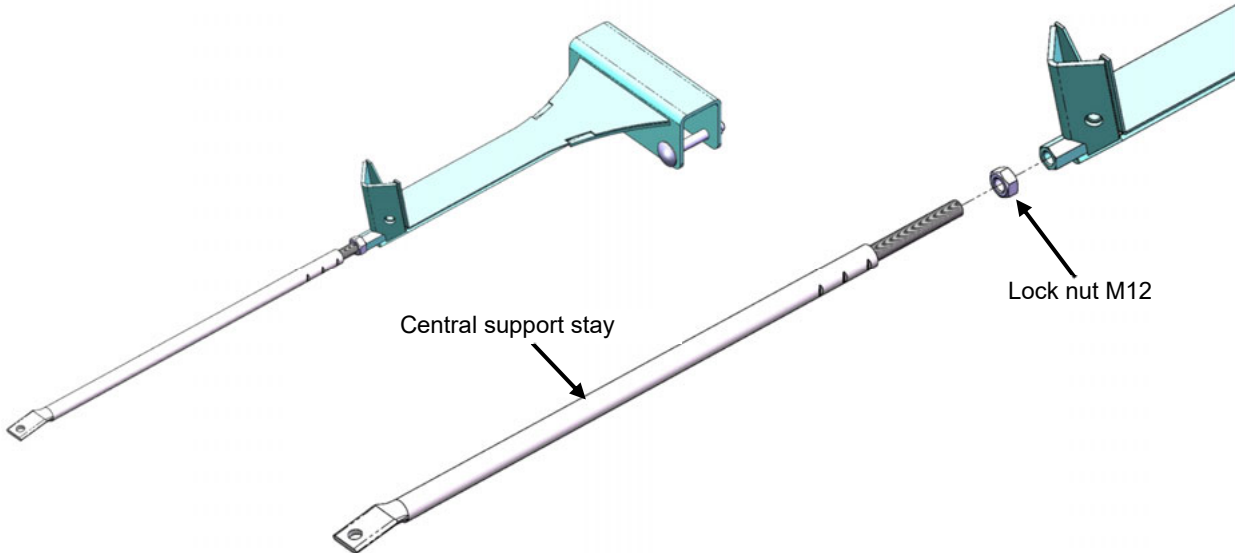
As a first step, bolt the angle to the runner on the header. This is done with long M16x60 bolts and stop nuts which are supplied with the header extension. Next, bolt the central support to the pan holder using the M12x90 carriage bolts supplied. Assemble the mounting bracket and bolt it to the central support using one M12x40 hex head bolt, two washers and one M12 stop nut.



Assembly instructions

Installing the central support

Attach the stays (*with the lock nut attached*) to the pan holders.

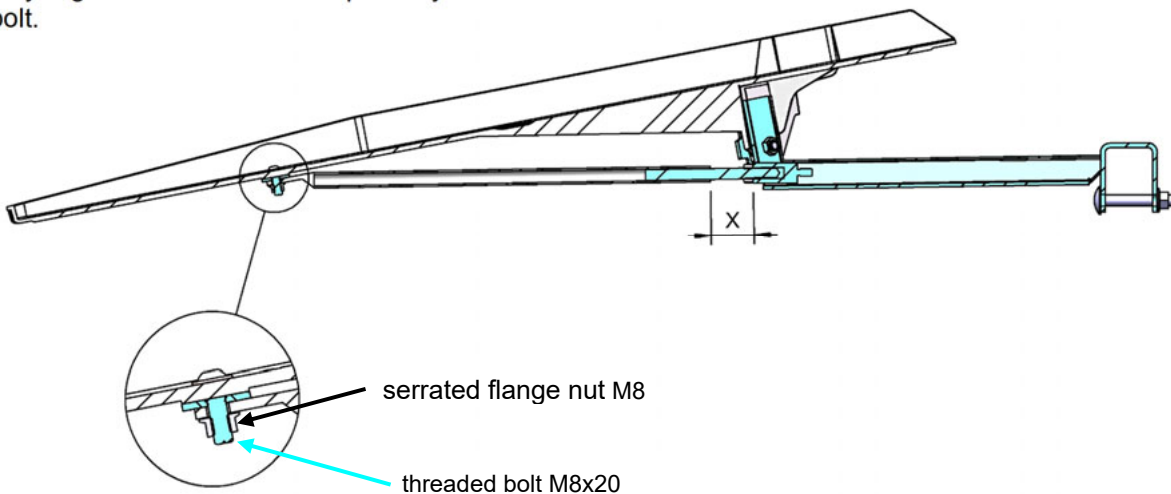


Note!

Do not tighten the M12 lock nut until the pans are fitted.



Test on one pan to see how deep the stay must be inserted into the pan holder ("X") before the hole in the stay aligns with the hole in the pan so you can insert the bolt.

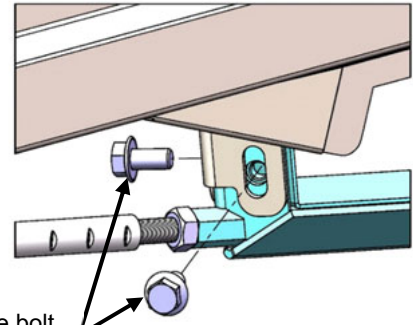


Assembly instructions

Mounting the central pans

The pans are attached to the pan holders with two M10x20mm serrated flange bolts. Adjust the height so that the guard shoes rest on the guards.

To increase the stiffness of the pans during the harvesting process, align them so that they are attached as far as possible to the front of the pan holder and have contact with the header's table at the back as far as possible over their entire width.

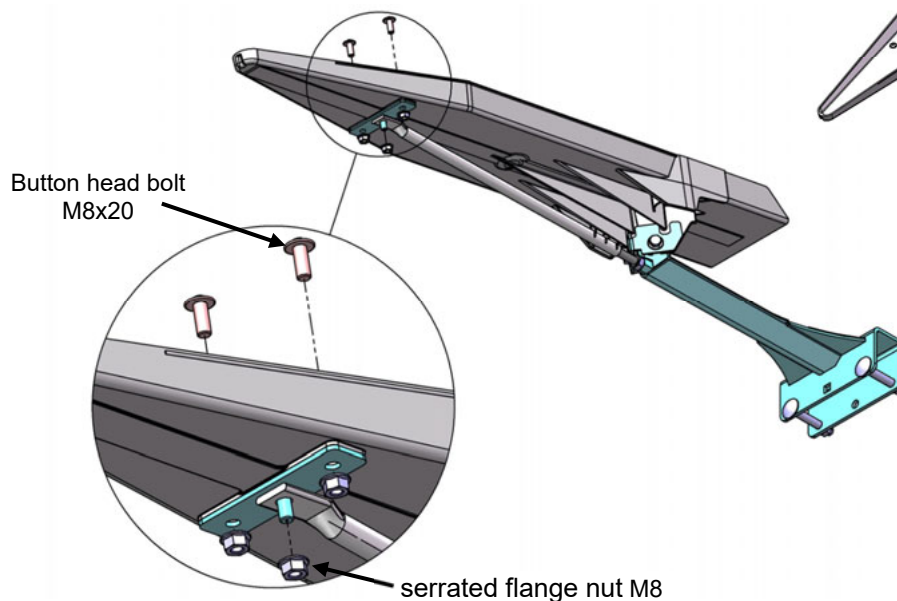


Serrated flange bolt
M10x20

Make sure that the guards are completely covered by the integrated shoes of the pan holders and no guards are visible in the gaps between the pans



The central stay is attached to the tip with two M8x20 button head bolts and three M8 serrated flange nuts.



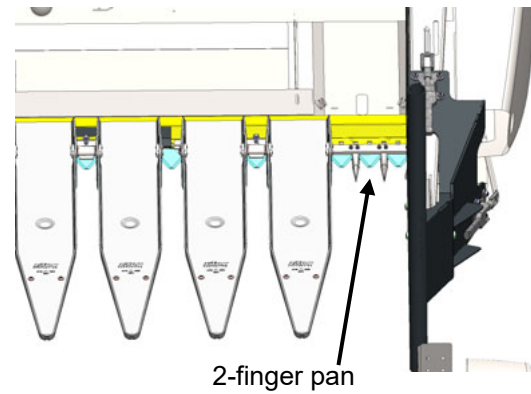
Assembly instructions

Before carrying out any subsequent work, make sure that the two side parts of the sunflower attachment are in correct contact with the tips of the side parts of the header

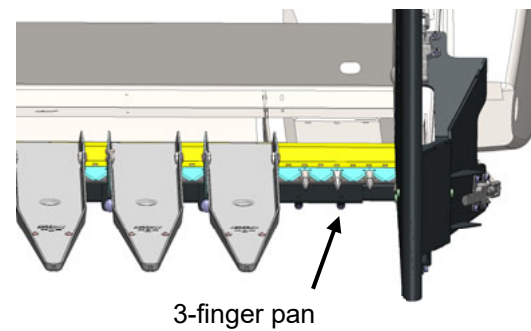
Start by attaching the central pans on the left side of the header. Be sure to pay attention to the distance between the supporting bar and the side part of the sunflower attachment as well as the distance between the supporting bar and the holder of the first center pan on the left side of the header. These dimensions are given on the laminated overall drawing of the sunflower extension.



Situation at 2-finger pan left hand side



Situation at 3-finger pan left hand side



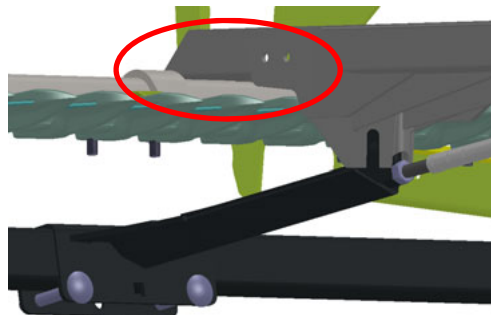
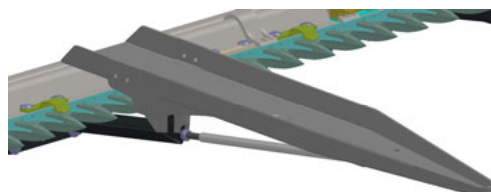
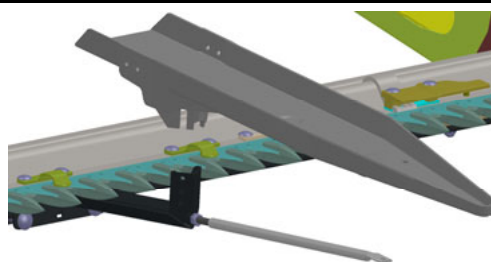
Align the first pan holder according to the dimensions on the laminated drawing and slide the first central pan onto the fingers from the front.



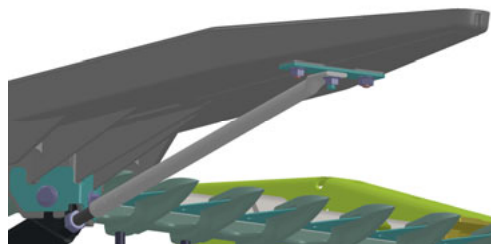
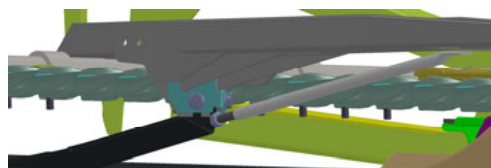
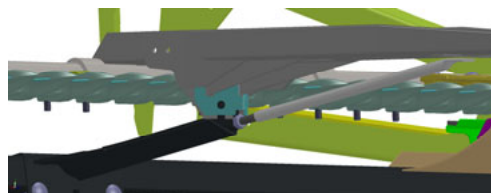
Assembly instructions

Since the New Holland EC and HC (Case 2030 and 2040), Varifeed Standard (Case 2050) and 760CG (Case 3050) headers have stone dams of different heights, different positions of the central pans are set up in the vertical direction during the installation of the sunflower attachments.

Place the pans on the pan holders and push them down until the bottom side of the pan rests on the stone dam. Make sure that the pan is in contact with the stone dam along its entire width.



Install the clamping plate, adjust the central support stay to the position of the pan – the pan must lie firmly in the prism of the pan holder at the front and be in contact with the stone dam over its entire width at the rear – and tighten the screws and nuts. Make sure that the pan is in contact with the stone dam over its entire width even after tightening the screws.

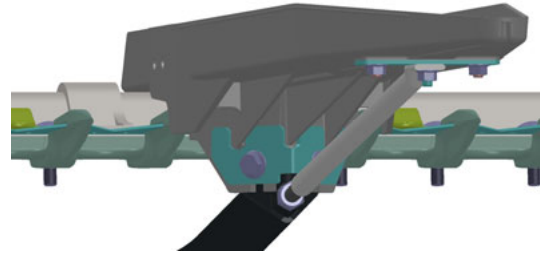


Assembly instructions

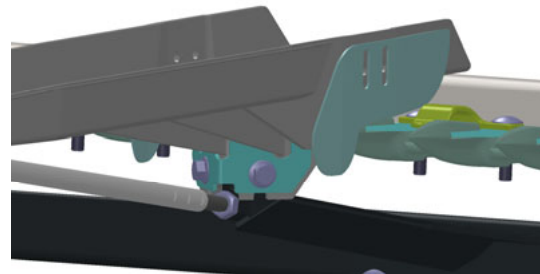
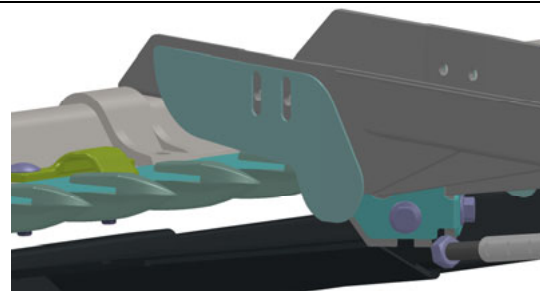
Due to the height of the stone dam, there is a free space in the rear area of the fingers between the underside of the pan and the tops of the fingers. This free space must be closed by the adjustable side cover plates supplied.

These side cover plates are designed to be universally used for different brands and types of headers.

Before mounting, make sure that only cover plates - as shown in the following pictures - are included.



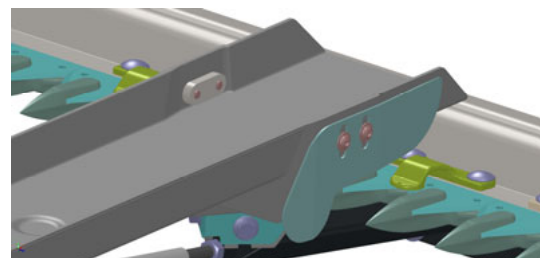
Attach the cover plate 41092 on the left and the cover plate 41090 on the right to the pan and secure both plates with screws 70031 (M8x16) and threaded plate 41077. Don't tighten the screws yet.



Adjust the two side cover plates in a vertical direction so that the free space up to the tops of the fingers is closed as completely as possible. Make sure that the knife blades do not collide with the side cover plates during the cutting movement.



Tighten the screws after adjusting the side cover plates.

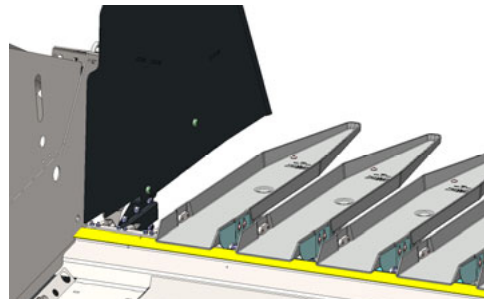


Assembly instructions

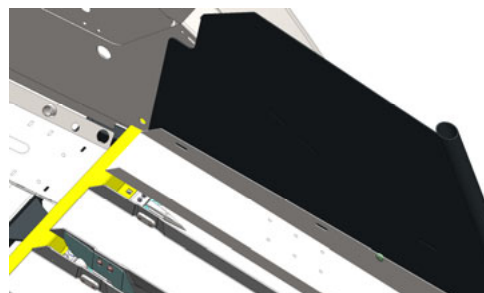
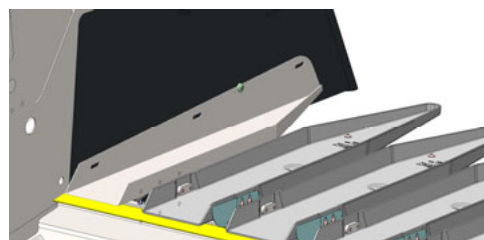
Attaching the outboard pans and aligning the side plates

Again, make sure that the two side plates of the sunflower attachment are correctly aligned with the tips of the side panels of the header.

Check again that the central pans are evenly aligned with each other in height.



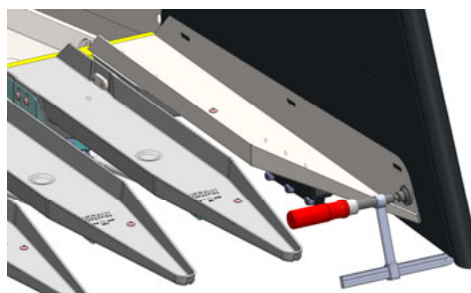
Align the height of the left outboard pan with the plastic center pans and bring the trailing edge of the outboard pan congruent with the trailing edges of the center pans.



Make sure that the outboard pan does not foul with the guide tube of the side plate

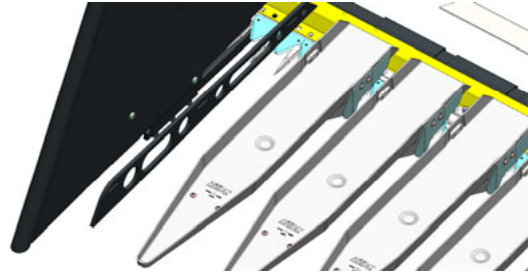


Fix the left side outboard pan to the side plate by means of screw clamps.



Assembly instructions

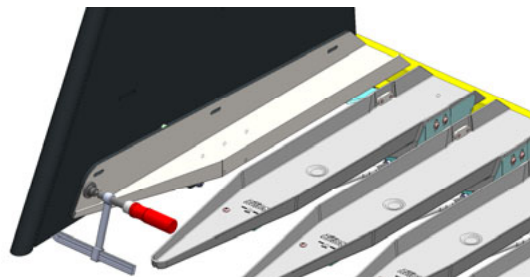
On the right side of the header, place the intermediate plate 40404 between the side panel and the right outboard pan.



Also align the right side outboard pan with the height of the plastic central pans and bring the trailing edge of the right outboard pan congruent with the trailing edges of the central pans.



Also fix the right side outboard pan to the side plate by means of screw clamps.

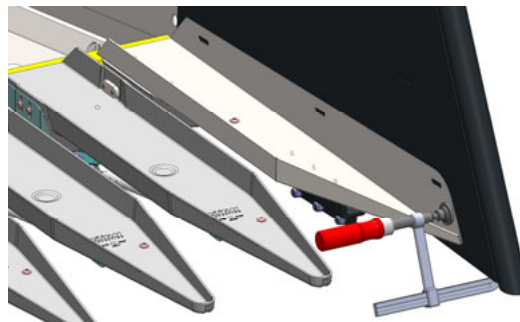


Make sure that the outboard pan does not foul with the guide tube of the side plate

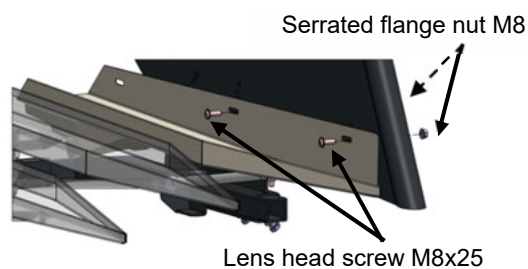
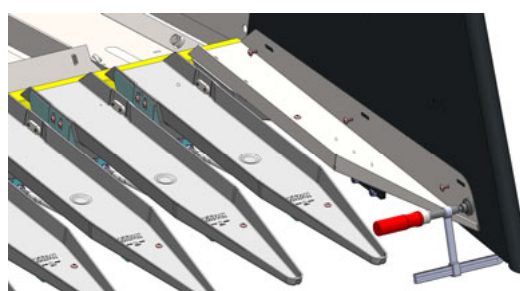


Assembly instructions

Drill the elongated holes of the outboard pans on the side plates with a drill \varnothing 9 mm.



Screw the two outboard pans with M8x25 lens head screws and M8 locking nuts.



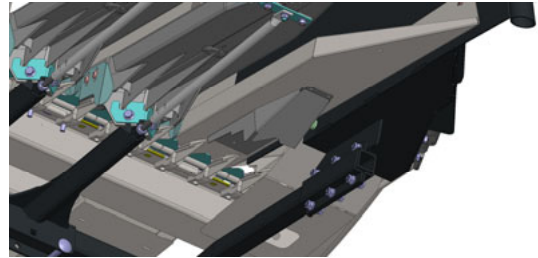
Be sure to mark the position of the outboard pans on the side plates, as the outboard pans will have to be dismantled again later.



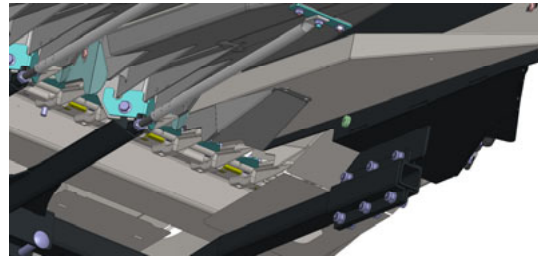
Assembly instructions

From model year 2023, all sunflower attachments are equipped with adjustable finger covers under the outboard pans.

After aligning and attaching the outboard pans to the side plates, the finger covers must be attached to the outboard pans.

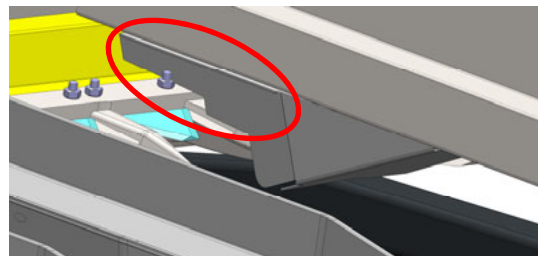


Slide the finger cover over the fingers and align it with them so that all fingers are evenly covered and the finger cover is centered on the flanks of the fingers.



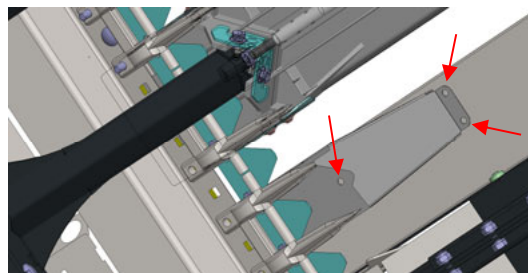
Be sure to position the finger covers so that they do not collide with the blades of the knife during its cutting motion.

Also make sure that the moving knife driver or its fastening screws do not collide with the finger cover on the drive side. Depending on the position of the supporting bars, the pans and the finger covers you have chosen, the vertical sheet metal of the finger cover in the area of the knife drive may have to be cut slightly free.

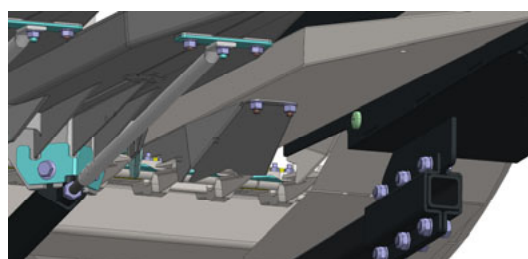


Assembly instructions

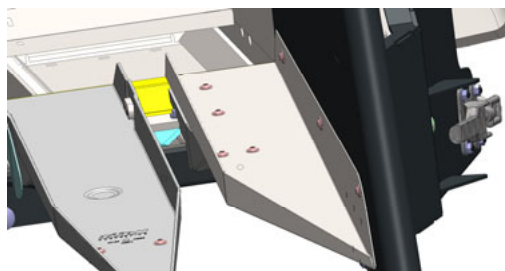
Draw the holes (there are 4 or 6 holes, depending on the size of the finger cover) of the finger cover on the outboard pans and dismantle the outboard pan. Now drill holes in the outboard pan at the marked points. The hole diameter should correspond to the one in the finger cover.



After drilling out the outboard pans, attach the finger covers to the outboard pans and reattach the outboard pans to the side plates according to the markings you have made. After aligning all these parts, tighten all fasteners.



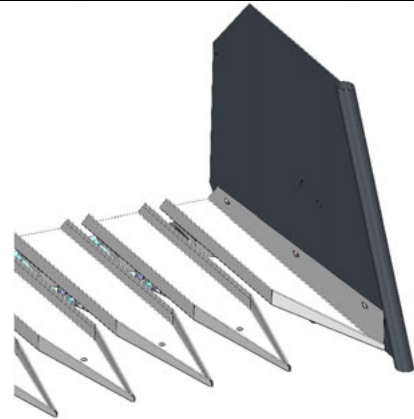
Finally, tighten the fastening screws and nuts of the outboard pans and finger covers.



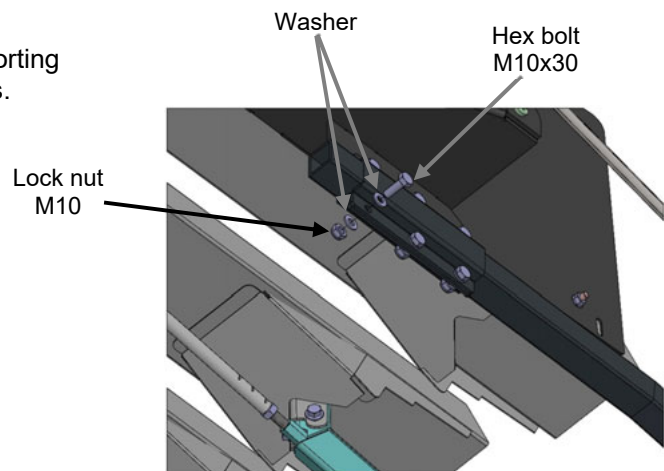
Assembly instructions

Attaching the side plates and the supporting arms

After aligning the side plates with the help of the pans, attach and secure all parts.

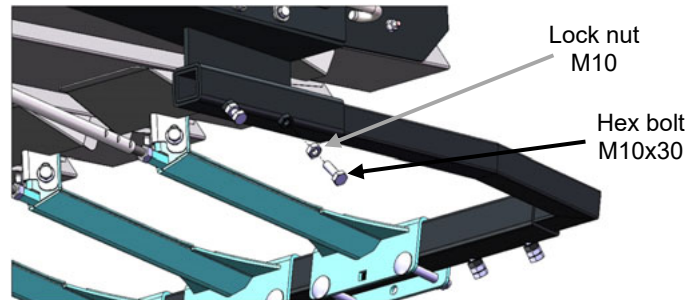


To do this, clamp the two side plates to the supporting arms with the M10x30 bolts and the M10 lock nuts.

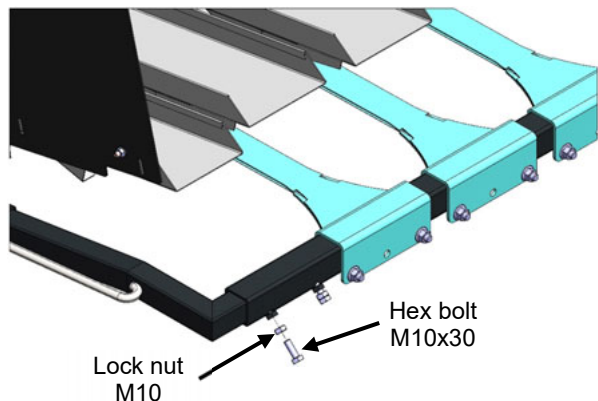


NH HD / Case 3050

NH HC-EC / Case 2030-2040
NH VF / Case 2050



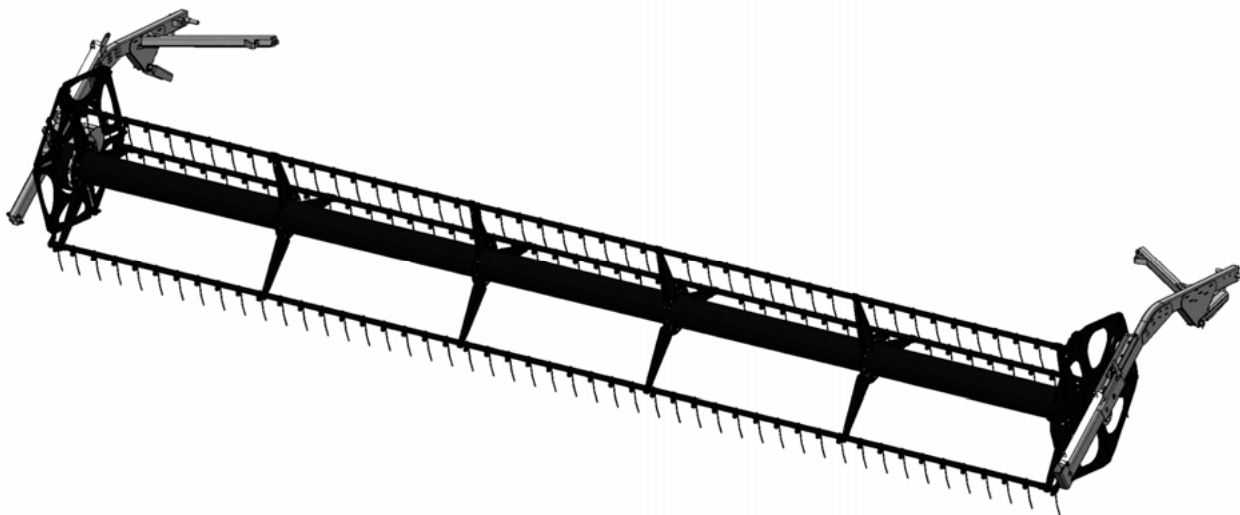
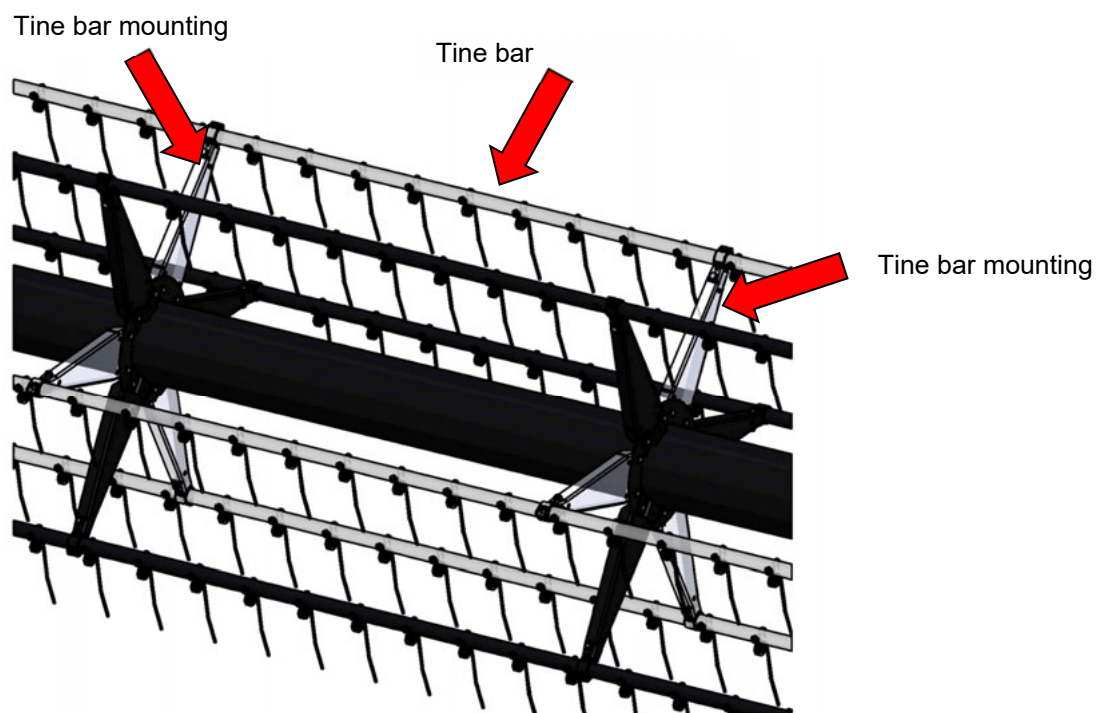
Then fix the supporting arms to both ends the supporting bars (see page 22), using the M10x30 bolts and M10 lock nuts supplied.



Assembly instructions

Installing the reel boards

Next, install the reel boards. As a first step, remove three tine bars and their mountings from the reel.



Assembly instructions

Installing the reel boards

Remove the fasteners from the outer sections with double tines and drill two holes into each reel board. Attach the plates with two M8x55 flange bolts.



Proceed in the following order:

- Flange bolt M8x55
- Reel board
- Guard
- Reel tube
- Flange nut M8

The bolts are left on the reel when removing the plates.

Assembly instructions

Installing the reel support to a New Holland VF+VF-HD / Case 2050+3050

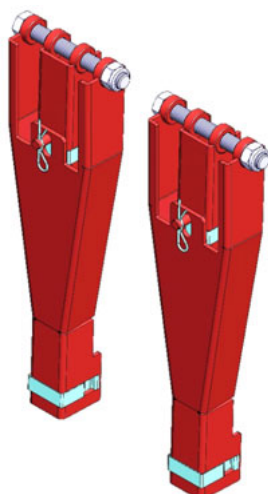
When attaching the sunflower extension (with adjustable table) of New Holland VF and VF HD or Case 2050 and 3050 headers, restrict the reel's vertical position towards the table by fitting support elements. These prevent the reel from fouling with the pans of the sunflower extension. The reel support attachment kit, part no. 40403, for these headers with adjustable tables has all components for supporting the reel when used in conjunction with a sunflower extension and also with a grain header after the sunflower extension is removed. The attachment kit can remain on the header.



Position: Grain header



Position: Sunflower extension



Attachment and removal of the assembled sunflower extension

Removing the extension from the header

Remove the threaded assembly from the central support and lower the header until you can release the toggle clamps and reverse the grain header out of the extension. Remove the reel boards and re-attach the tine bars to the reel.

Attaching the extension to the header

Place the sunflower extension on the ground and drive the combine, with the grain header attached, into the extension.



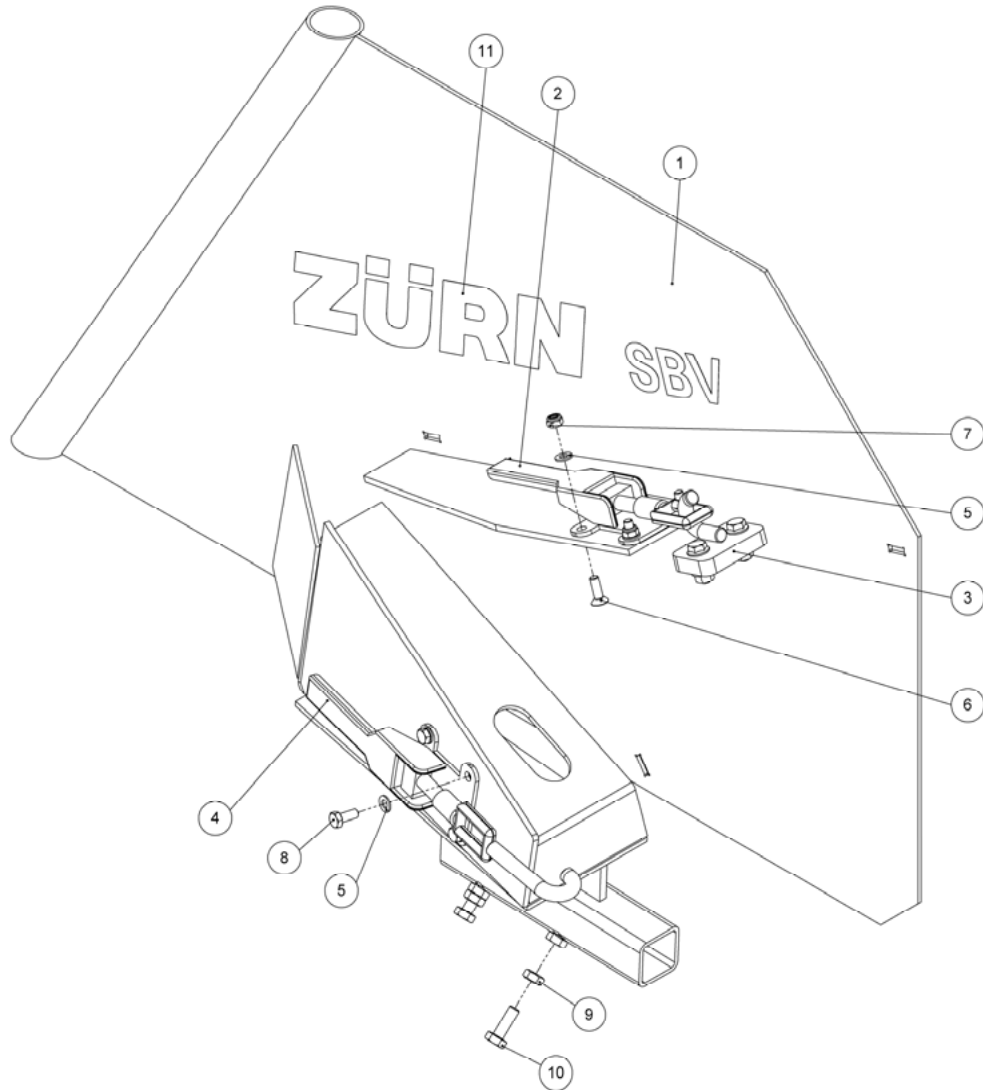
Make sure that both guard fingers are inserted in the pan!

Attach the extension to both side plates of the grain header by locking the toggle clamps. Then attach the central supports.

Next, fit the reel boards.

Parts list

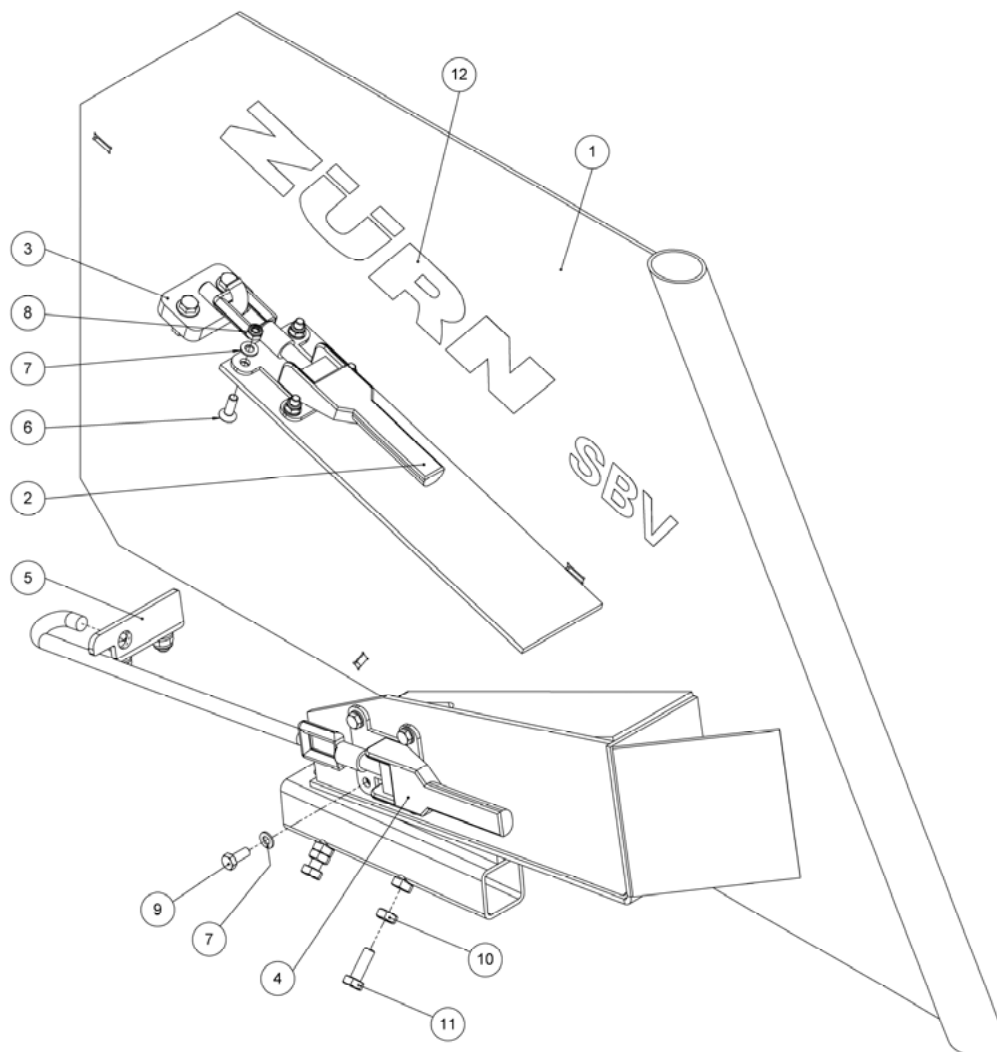
Side plates (left side) on New Holland HC-EC / Case 2030-2040



Item	Quantity	Item no.	Designation	Description
1	1	40440	Side plate assembly, left side	
2	1	19044	Toggle clamp	M14x1.5
3	1	-	Upper hook	See accessory pack page 72
4	1	22114	Hook operating toggle clamp	
5	8	092182	Washer	DIN 125 - 8
6	4	091629	Countersunk bolt	DIN 7991 - M8x25
7	4	70103	Hex nut	DIN 985 - M8
8	4	092223	Hex bolt	DIN 933 - M8x20
9	2	70015	Hex nut	DIN 934 - M10
10	2	70061	Hex bolt	DIN 933 - M10x30
11	1	41056	Zürn SBV Decal	
1-11	1		Side plate assembly, left side	

Parts list

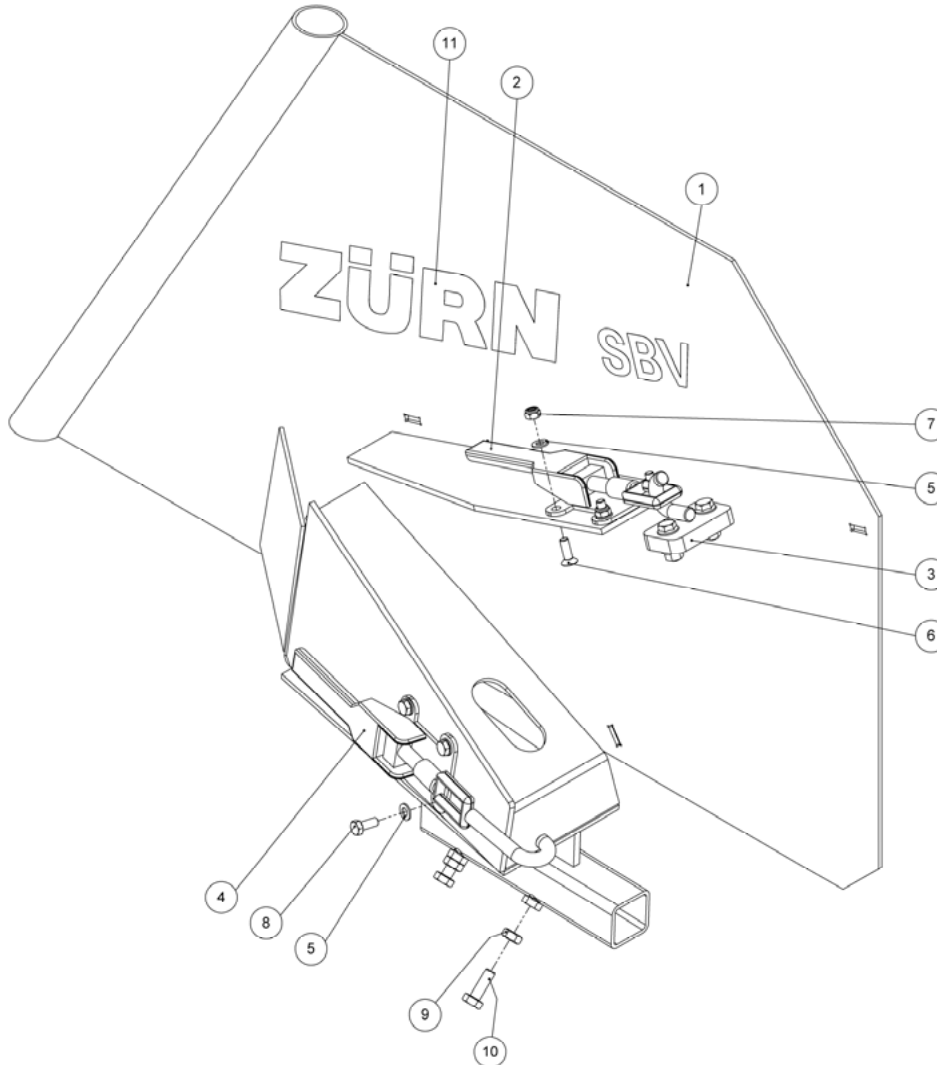
Side plates (right side) on New Holland HC-EC / Case 2030-2040



Item	Quantity	Item no.	Designation	Description
1	1	40441	Side plate assembly, right side	
2	1	19044	Top toggle clamp	
3	1	-	Top hook assembly	See accessory pack page 72
4	1	40255	Hook operating toggle clamp	
5	1	-	Angle assembly	See accessory pack page 72
6	4	091629	Countersunk bolt	DIN 7991 - M8x25
7	8	092182	Washer	DIN 125 - 8
8	4	70103	Hex nut	DIN 985 - M8
9	4	092223	Hex bolt	DIN 933 - M8x20
10	2	70015	Hex nut	DIN 934 - M10
11	2	70061	Hex bolt	DIN 933 - M10x30
12	1	41056	Zürn SBV Decal	
1-12		-	Side plate assembly, right side	

Parts list

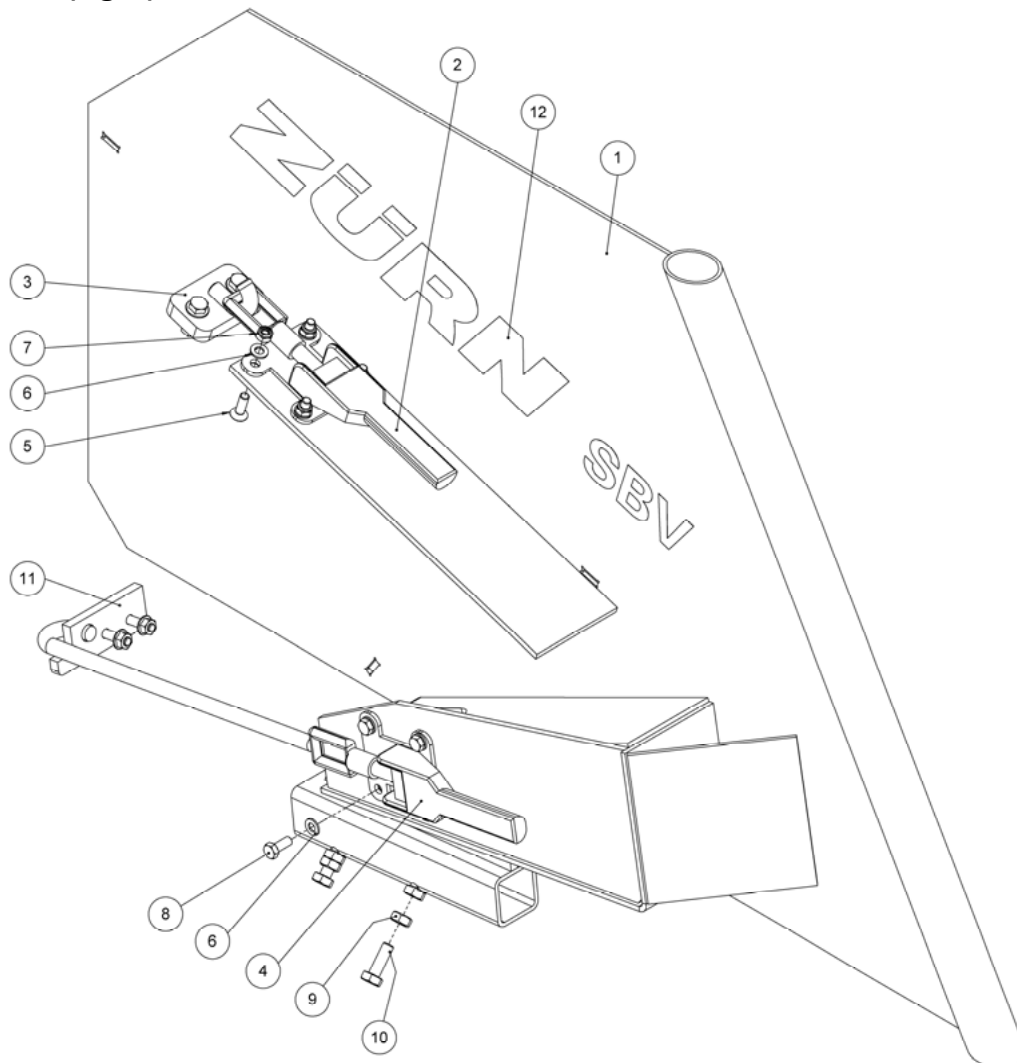
Side plates (left side) on New Holland VF Standard / Case 2050



Item	Quantity	Item no.	Designation	Description
1	1	40440	Side plate assembly, left side	
2	1	19044	Top toggle clamp	
3	1	-	Top hook assembly	See accessory pack page 73
4	1	22114	Hook operating toggle clamp, left side	
5	8	092182	Washer	DIN 125 - 8
6	4	091629	Countersunk bolt	DIN 7991 - M8
7	4	70103	Hex bolt	DIN 985 - M8
8	4	092223	Hex bolt	DIN 933 - M8x20
9	2	70015	Hex nut	DIN 934 - M10
10	2	70061	Hex bolt	DIN 933 - M10x30
11	1	41056	Zürn SBV Decal	
1-11	-		Side plate assembly, left side	

Parts list

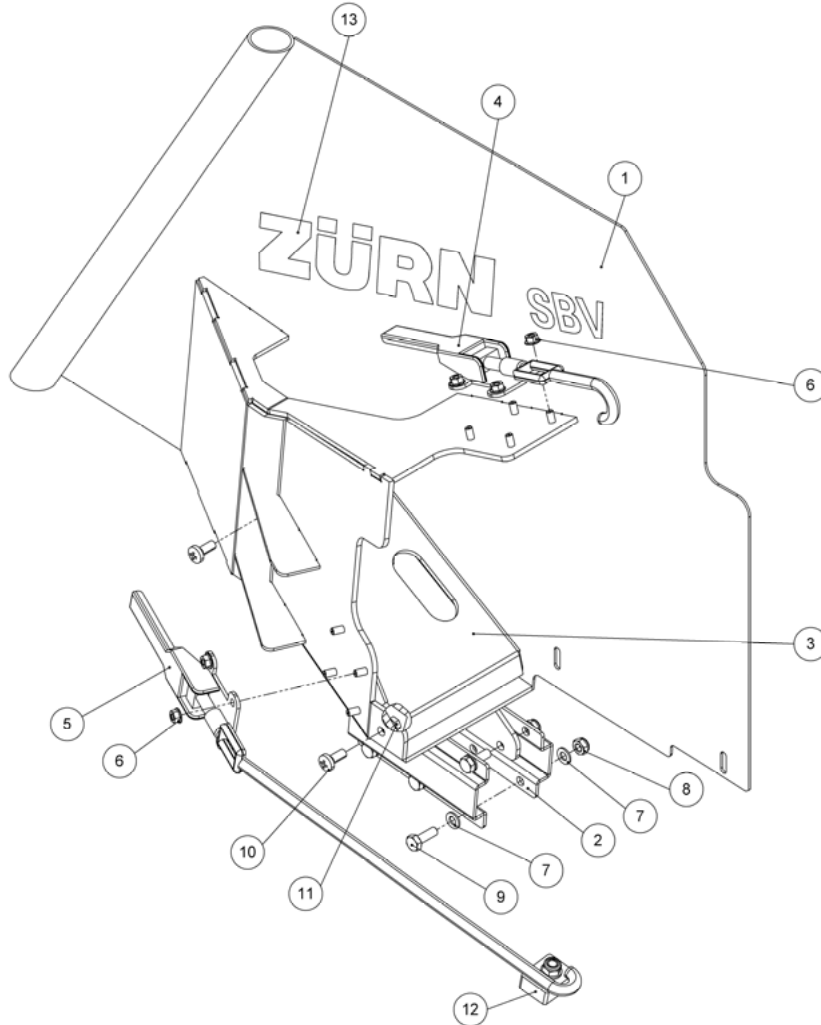
Side plates (right) on New Holland VF Standard / Case 2050



Item	Quantity	Item no.	Designation	Description
1	1	40441	Side plate assembly, right side	
2	1	19044	Hook operating toggle clamp, top	
3	1	-	Top hook assembly	See accessory pack page 73
4	1	40255	Hook operating toggle clamp	
5	4	091629	Countersunk bolt	DIN 7991 - M8x25
6	8	092182	Washer	DIN 125 - 8
7	4	70103	Hex nut	DIN 985 - M8
8	4	092223	Hex bolt	DIN 933 - M8x20
9	2	70015	Hex nut	DIN 934 - M10
10	2	70061	Hex bolt	DIN 933 - M10x30
11	1	-	Bracket with bolts	See accessory pack page 73
12	1	41056	Zürn SBV Decal	
1-12	1	-	Side plate assembly, left side	

Parts list

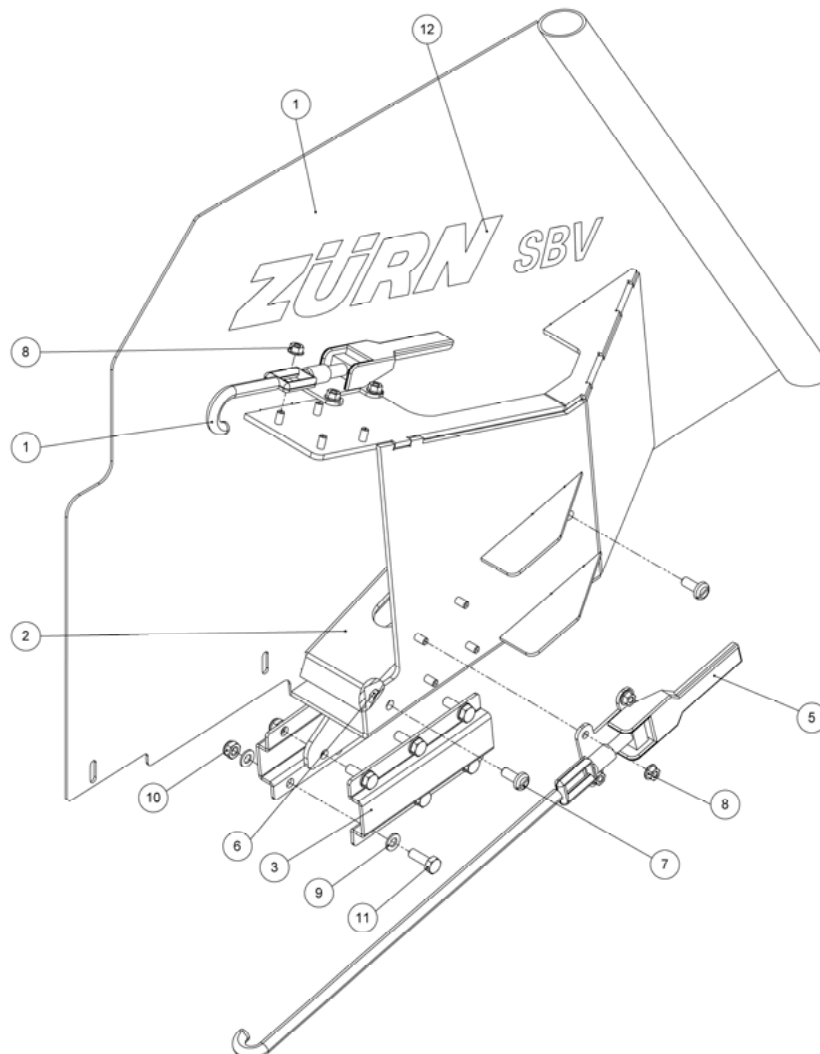
Side plates (left) on New Holland VF HD / Case 3050



Item	Quantity	Item no.	Designation	Description
1	1	40183	Side plate assembly, left side	
2	2	40169	Counter support attachment plate	
3	1	40172	Bottom brace, left side	
4	1	40397	Top toggle clamp	
5	1	40186	Bottom toggle clamp, left side	
6	8	70005	Hex nut with flange	DIN 6923 - M8
7	12	70075	Washer	DIN 125 - 10
8	6	70021	Hex nut	DIN 985 - M10
9	6	70061	Hex bolt	DIN 933 - M10x30
10	4	093820	Button head bolt	DIN 7985 - M10x25
11	4	70006	Hex nut with flange	DIN 6923 - M10
12	1	-	Hook support assembly	See accessory pack page 74
13	1	41056	Zürn SBV Decal	
1-13	1	-	Side plate assembly, left side	

Parts list

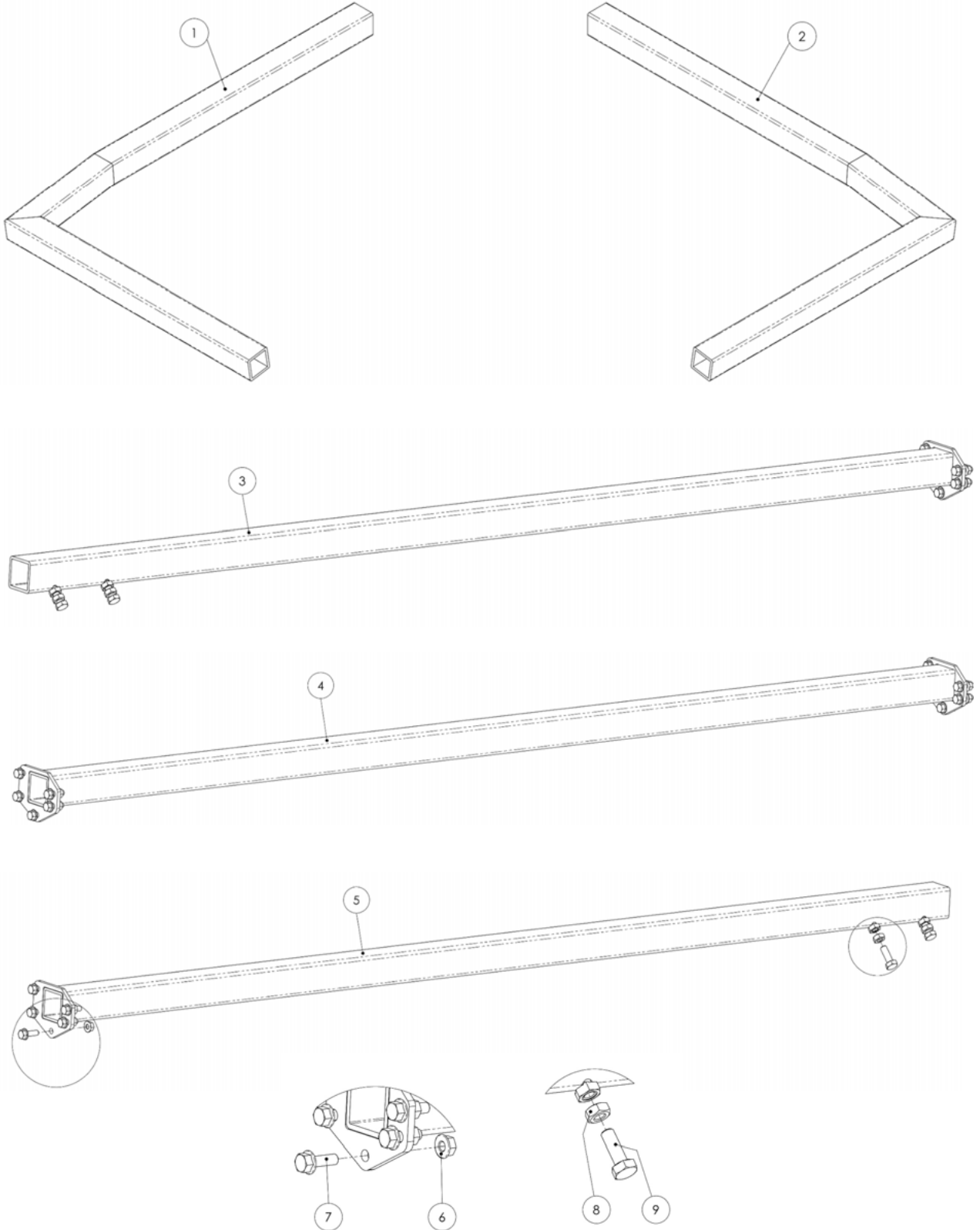
Side plates (right) on New Holland VF HD / Case 3050



Item	Quantity	Item no.	Designation	Description
1	1	40184	Side plate assembly, left side	
2	1	40177	Bottom brace, right side	
3	2	40196	Counter support attachment plate	
4	1	40397	Top toggle clamp	
5	1	40187	Bottom toggle clamp, right side	
6	4	70006	Hex nut with flange	DIN 6923 - M10
7	4	093825	Flat head bolt	DIN 85 (ISO 1580) - M10x25
8	8	70136	Serrated flange nut	DIN 6923 - M8
9	12	70075	Washer	DIN 125 - 10
10	6	70021	Hex nut	DIN 985 - M10
11	6	70061	Hex bolt	DIN 933 - M10x30
12	1	41056	Zürn SBV Decal	
1-12	1	-	Side plate assembly, left side	

Parts list

Supporting arms and bars



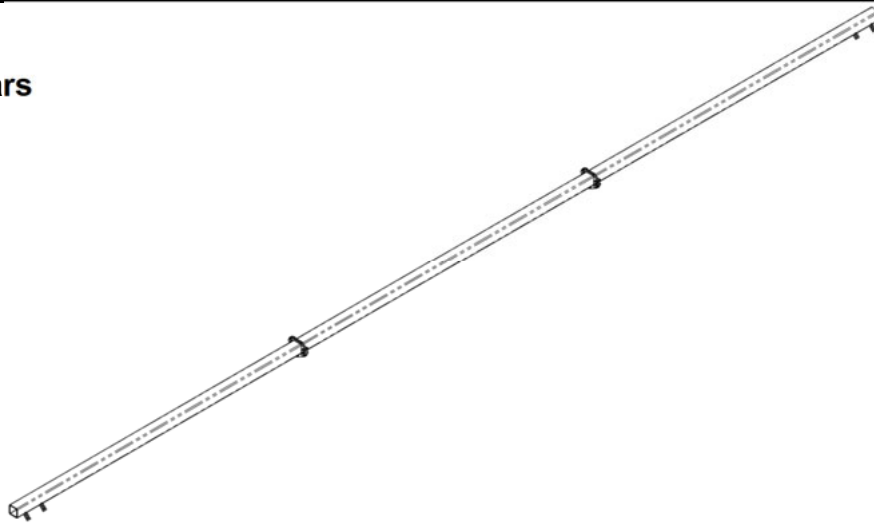
Parts list

Supporting arms and bars

Item	Quantity	Item no.	Designation	Description
1	1	40477	Left supporting arm	
2	1	40478	Right supporting arm	
3	1	40019	Assembled supporting bar, left side	1780mm
4	AR	40018	Assembled supporting bar, central section	1828.8mm
	AR	40928	Assembled supporting bar, central section	1143mm
5	1	40020	Assembled supporting bar, right side	1137mm
	1	40021	Assembled supporting bar, right side	603mm
	1	40022	Assembled supporting bar, right side	223mm
	1	40023	Assembled supporting bar, right side	1517mm
	1	40030	Assembled supporting bar, right side	1780mm
	1	40133	Assembled supporting bar, right side	835mm
	1	40930	Assembled supporting bar, right side	185mm
6	AR	093230	Hex bolt with flange	DIN6921 M8x25
7	AR	70005	Hex nut with flange	DIN6923 M8
8	4	70015	Hex nut	DIN 934 M10
9	4	70061	Hex bolt	DIN 933 M10x30

Parts list

Supporting bars



Header width	Quantity	Item no.	Designation	Description
3.96m	1	40019	Assembled supporting bar, left side	
	1	40894	Assembled supporting bar, right side	
	5	093230	Hex bolt with flange	DIN 6921 M8x25
	5	70005	Hex nut with flange	DIN 6923 M8
4.57m	1	40019	Assembled supporting bar, left side	
	1	40018	Assembled supporting bar, middle section	
	1	40133	Assembled supporting bar, right side	
	10	093230	Hex bolt with flange	DIN 6921 M8x25
	10	70005	Hex nut with flange	DIN 6923 M8
16G	1	40019	Assembled supporting bar, left side	
	1	40018	Assembled supporting bar, middle section	
	1	40020	Assembled supporting bar, right side	
	10	093230	Hex bolt with flange	DIN 6921 M8x25
	10	70005	Hex nut with flange	DIN 6923 M8
17G / 5.18m	1	40019	Assembled supporting bar, left side	
	1	40018	Assembled supporting bar, middle section	
	1	40023	Assembled supporting bar, right side	
	10	093230	Hex bolt with flange	DIN 6921 M8x25
	10	70005	Hex nut with flange	DIN 6923 M8
18G	1	40019	Assembled supporting bar, left side	
	1	40018	Assembled supporting bar, middle section	
	1	40030	Assembled supporting bar, right side	
	10	093230	Hex bolt with flange	DIN 6921 M8x25
	10	70005	Hex nut with flange	DIN 6923 M8
20G / 6.10m	1	40019	Assembled supporting bar, left side	
	2	40018	Assembled supporting bar, middle section	
	1	40021	Assembled supporting bar, right side	
	15	093230	Hex bolt with flange	DIN 6921 M8x25
	15	70005	Hex nut with flange	DIN 6923 M8
22G	1	40019	Assembled supporting bar, left side	
	2	40018	Assembled supporting bar, middle section	
	1	40020	Assembled supporting bar, right side	
	15	093230	Hex bolt with flange	DIN 6921 M8x25
	15	70005	Hex nut with flange	DIN 6923 M8

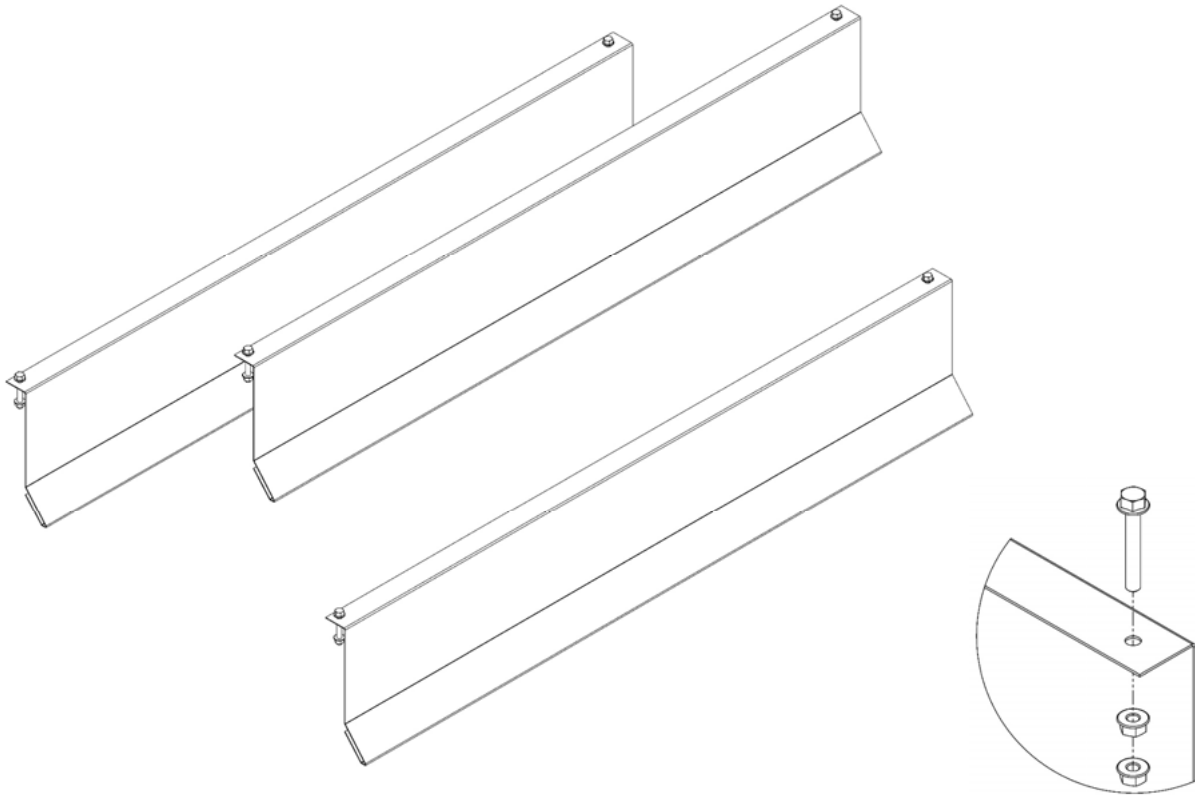
Parts list

Supporting bars

Header width	Quantity	Item no.	Designation	Description
7.32m	1	40019	Assembled supporting bar, left side	
	2	40018	Assembled supporting bar, middle section	
	1	40030	Assembled supporting bar, right side	
	15	093230	Hex bolt with flange	DIN 6921 M8x25
	15	70005	Hex nut with flange	DIN 6923 M8
	25G	1	40019	Assembled supporting bar, left side
3		40018	Assembled supporting bar, middle section	
1		40022	Assembled supporting bar, right side	
20		093230	Hex bolt with flange	DIN 6921 M8x25
20		70005	Hex nut with flange	DIN 6923 M8
28G		1	40019	Assembled supporting bar, left side
	3	40018	Assembled supporting bar, middle section	
	1	40930	Assembled supporting bar, right side	
	20	093230	Hex bolt with flange	DIN 6921 M8x25
	20	70005	Hex nut with flange	DIN 6923 M8
	30G / 9.15m	1	40019	Assembled supporting bar, left side
3		40018	Assembled supporting bar, middle section	
1		40030	Assembled supporting bar, right side	
20		093230	Hex bolt with flange	DIN 6921 M8x25
20		70005	Hex nut with flange	DIN 6923 M8
35G / 10.70m		1	40019	Assembled supporting bar, left side
	4	40018	Assembled supporting bar, middle section	
	1	40023	Assembled supporting bar, right side	
	25	093230	Hex bolt with flange	DIN 6921 M8x25
	25	70005	Hex nut with flange	DIN 6923 M8

Parts list

Reel boards for NH-HC/EC/VF Standard + Case 2030/2040/2050



Header width	Quantity	Item no.	Designation	Technical information
3.96m	3	41021	Reel board	1750mm
	3	41022	Reel board	1945mm
	24	70005	Hex nut with flange	DIN 6923 - M8
	12	093819	Hex bolt with flange	DIN 6921 - M8x55
4.57m	3	40149	Reel board	1455mm
	3	40150	Reel board	1345mm
	3	41007	Reel board	1430mm
	48	70005	Hex nut with flange	DIN 6923 - M8
	24	093819	Hex bolt with flange	DIN 6921 - M8x55
5.18m	3	41012	Reel board	1440mm
	3	41013	Reel board	1640mm
	3	41014	Reel board	1770mm
		70005	Hex nut with flange	DIN 6923 - M8
		093819	Hex bolt with flange	DIN 6921 - M8x55
6.10m	6	40148	Reel board	1480mm
	6	41011	Reel board	1390mm
	48	70005	Hex nut with flange	DIN 6923 - M8
	24	093819	Hex bolt with flange	DIN 6921 - M8x55
9.15m	15	40155	Reel board	
	60	70005	Hex nut with flange	DIN 6923 - M8
	30	093819	Hex bolt with flange	DIN 6921 - M8x55

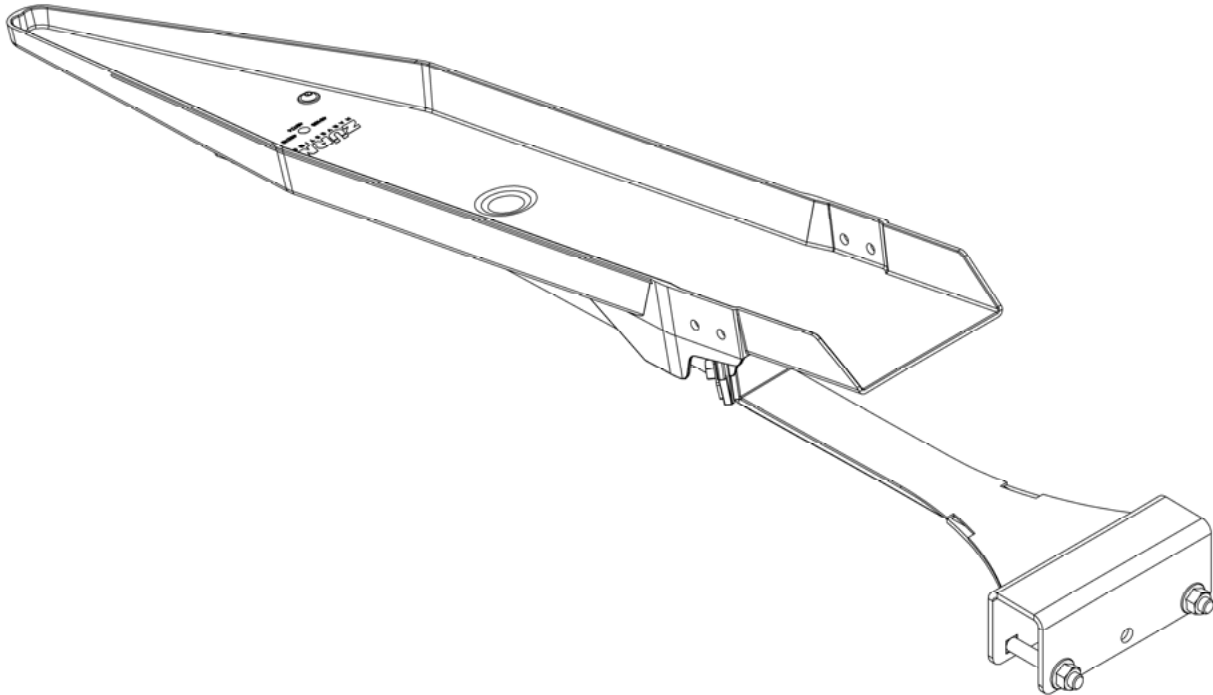
Parts list

Reel boards for New Holland VF HD / Case 3050

Header width	Quantity	Item no.	Designation	Technical information
17ft	6	40393	Reel board	1700mm
	6	40394	Reel board	1640mm
	48	70005	Hex nut with flange	DIN 6923 - M8
	24	093819	Hex bolt with flange	DIN 6921 - M8x55
18ft	3	40334	Reel board	1760mm
	6	40393	Reel board	1700mm
	48	70005	Hex nut with flange	DIN 6923 - M8
	24	093819	Hex bolt with flange	DIN 6921 - M8x55
20ft	3	40817	Reel board	1350mm
	6	40818	Reel board	1490mm
	3	40819	Reel board	1460mm
	48	70005	Hex nut with flange	DIN 6923 - M8
	24	093819	Hex bolt with flange	DIN 6921 - M8x55
22ft	6	40332	Reel board	1670mm
	6	40630	Reel board	1475mm
		70005	Hex nut with flange	DIN 6923 - M8
		093819	Hex bolt with flange	DIN 6921 - M8x55
25ft	3	40332	Reel board	1670mm
	3	40333	Reel board	1970mm
	6	40334	Reel board	1760mm
	48	70005	Hex nut with flange	DIN 6923 - M8
	24	093819	Hex bolt with flange	DIN 6921 - M8x55
28ft	3	41036	Reel board	1380mm
	9	41037	Reel board	1800mm
	3	41038	Reel board	1420mm
	60	70005	Hex nut with flange	DIN 6923 - M8
	30	093819	Hex bolt with flange	DIN 6921 - M8x55
30ft	3	40334	Reel board	1760mm
	3	40393	Reel board	1700mm
	9	40394	Reel board	1640mm
	60	70005	Hex nut with flange	DIN 6923 - M8
	30	093819	Hex bolt with flange	DIN 6921 - M8x55
35ft	12	40630	Reel board	1475mm
	6	40754	Reel board	1330mm
	3	40818	Reel board	1490mm
	84	70005	Hex nut with flange	DIN 6923 - M8
	42	093819	Hex bolt with flange	DIN 6921 - M8x55

Parts list

Plastic pans - New Holland HC/EC/VF + Case 2030/2040/2050

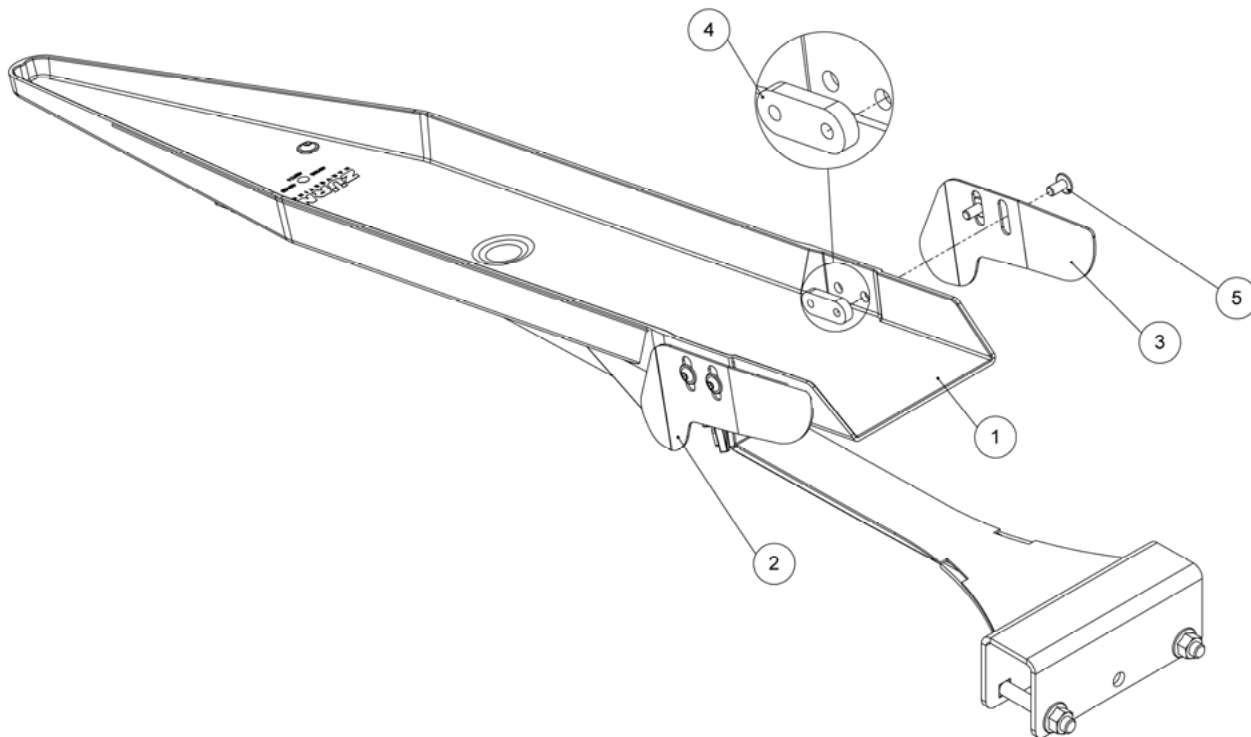


Item	Quantity	Item no.	Designation	Description
1	1	40480	Central plastic pan assembly - universal	See page 64

Header width	Quantity	Item	Item no.	Designation
13 ft	15	1	40480	Central plastic pan assy. - universal
15 ft	18			
17 ft	21			
20 ft	25			
24 ft	30			
30 ft	38			
35 ft	45			

Parts list

Plastic pans - New Holland HD + Case 3050

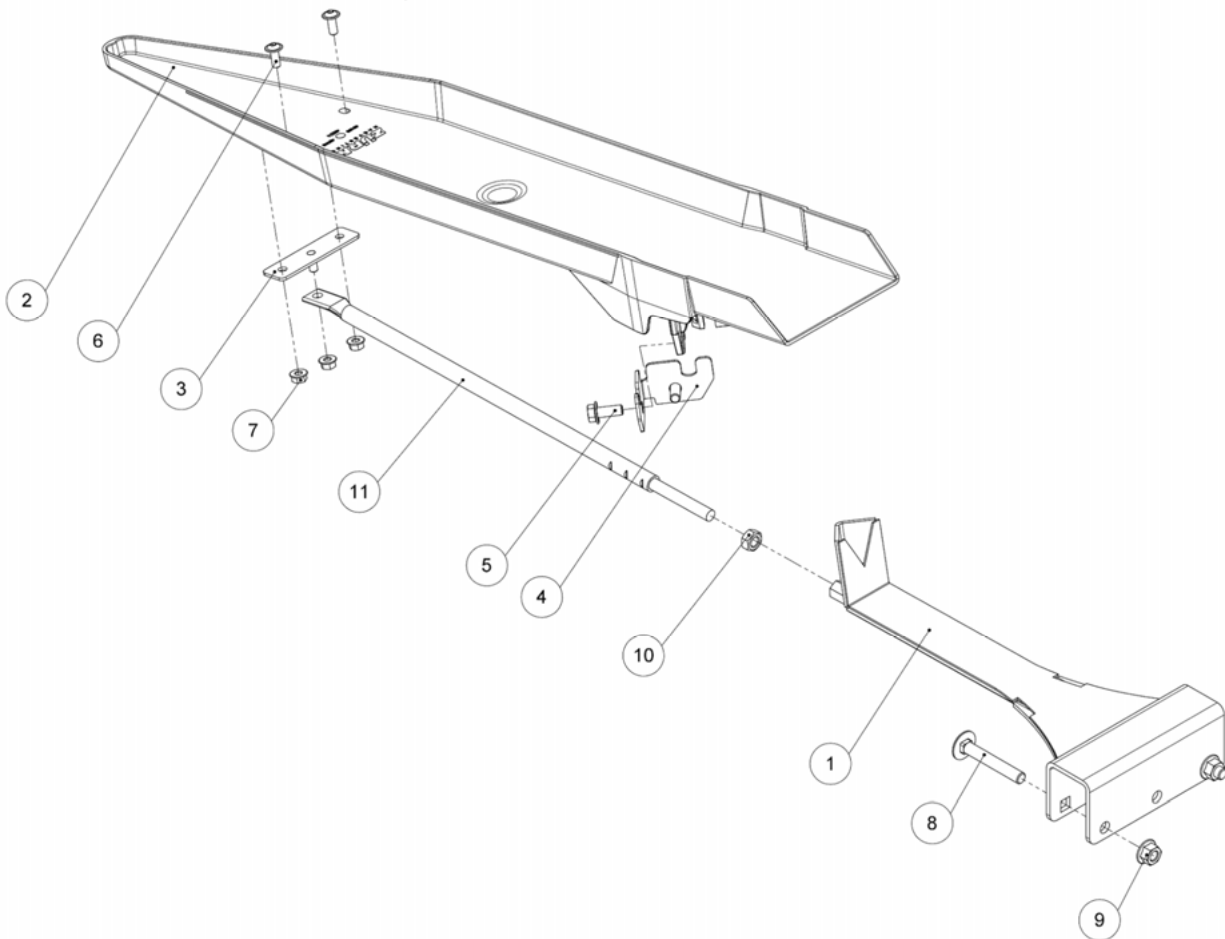


Item	Quantity	Item no	Designation	Description
1	1	40480	Central plastic pan assembly – universal	See page 64
2	1	41090	Cover plate pan right side	New Holland HD + Case 3050
3	1	41092	Cover plate pan left side	New Holland HD + Case 3050
4	2	41077	Plate with threaded holes	
5	4	70031	Countersunk hex button head bolt	ISO 7380-2 – M8x16

Header width	Quantity	Item	Item no.	Deisgnation
16 ft	19	1-5	40481	Central plastic pan assembly – Claas Vario / New Holland HD + Case 3050
18 ft	22			
20 ft	25			
22 ft	27			
25 ft	31			
28 ft	35			
30 ft	38			
35 ft	45			
41 ft	53			

Parts list

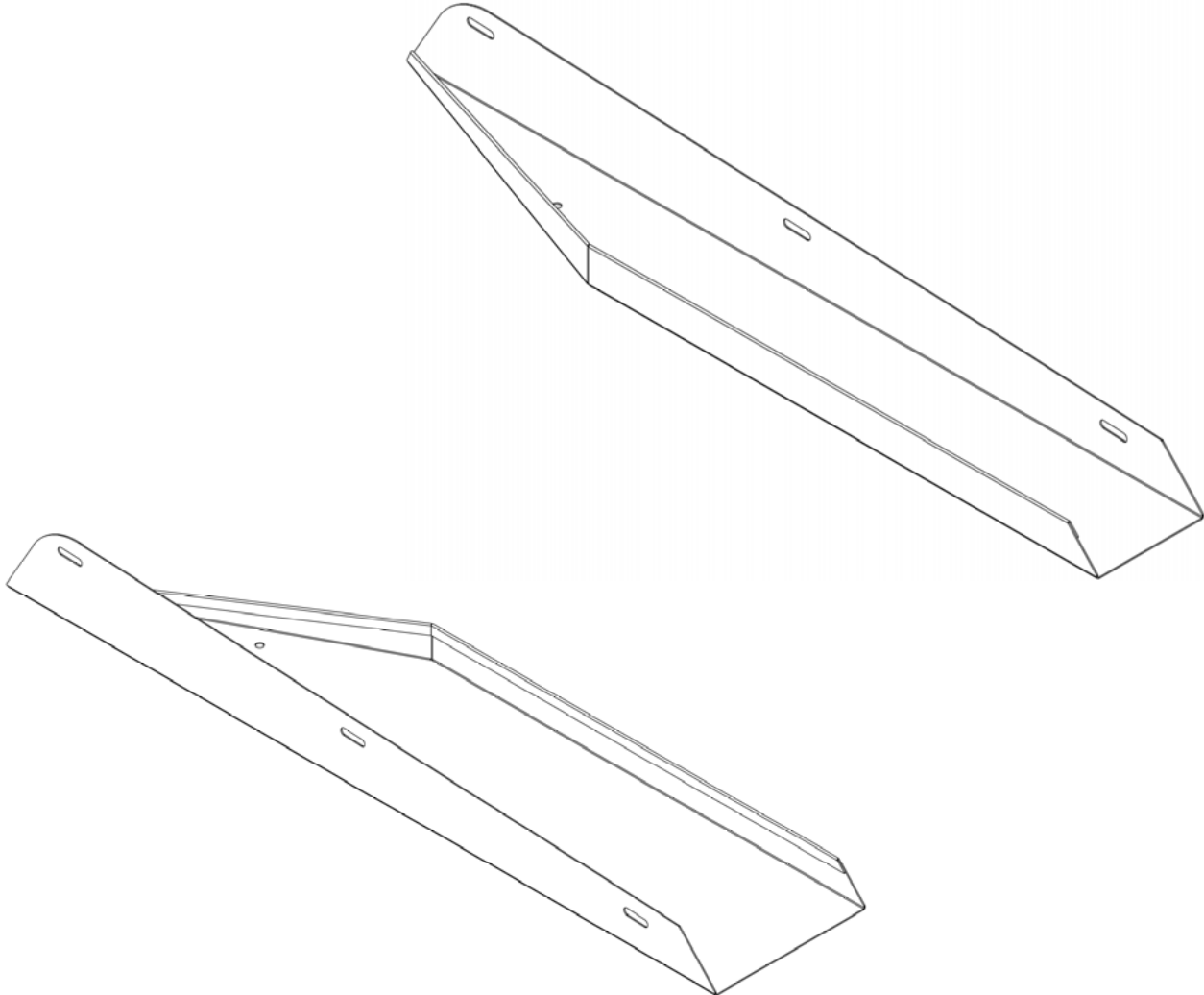
Plastic pans - universal



Item	Quantity	Item no	Designation	Description
1	1	40004	Central pan support	
2	1	40482	Plastic pan RAL 7047 (Grey 4)	universal
3	1	40199	Central support stay	
4	1	40239	Plastic pan attachment plate	
5	2	093223	Hex bolt with flange	DIN 6921 M10x25
6	2	70033	Countersunk hex button head bolt	ISO 7380-2 M8x20
7	3	70005	Hex nut with flange	DIN 6923 M8
8	2	70199	Carriage bolt	Ähnl. DIN 603 M12x80
9	2	70012	Hex nut with flange	DIN 6923 M12
10	1	091664	Hex nut	DIN 934 M12
11	1	40047	Central pan stay	Ab MY2010

Parts list

Outboard pans left and right - HC/EC/VF Standard + Case 2030/2040/2050

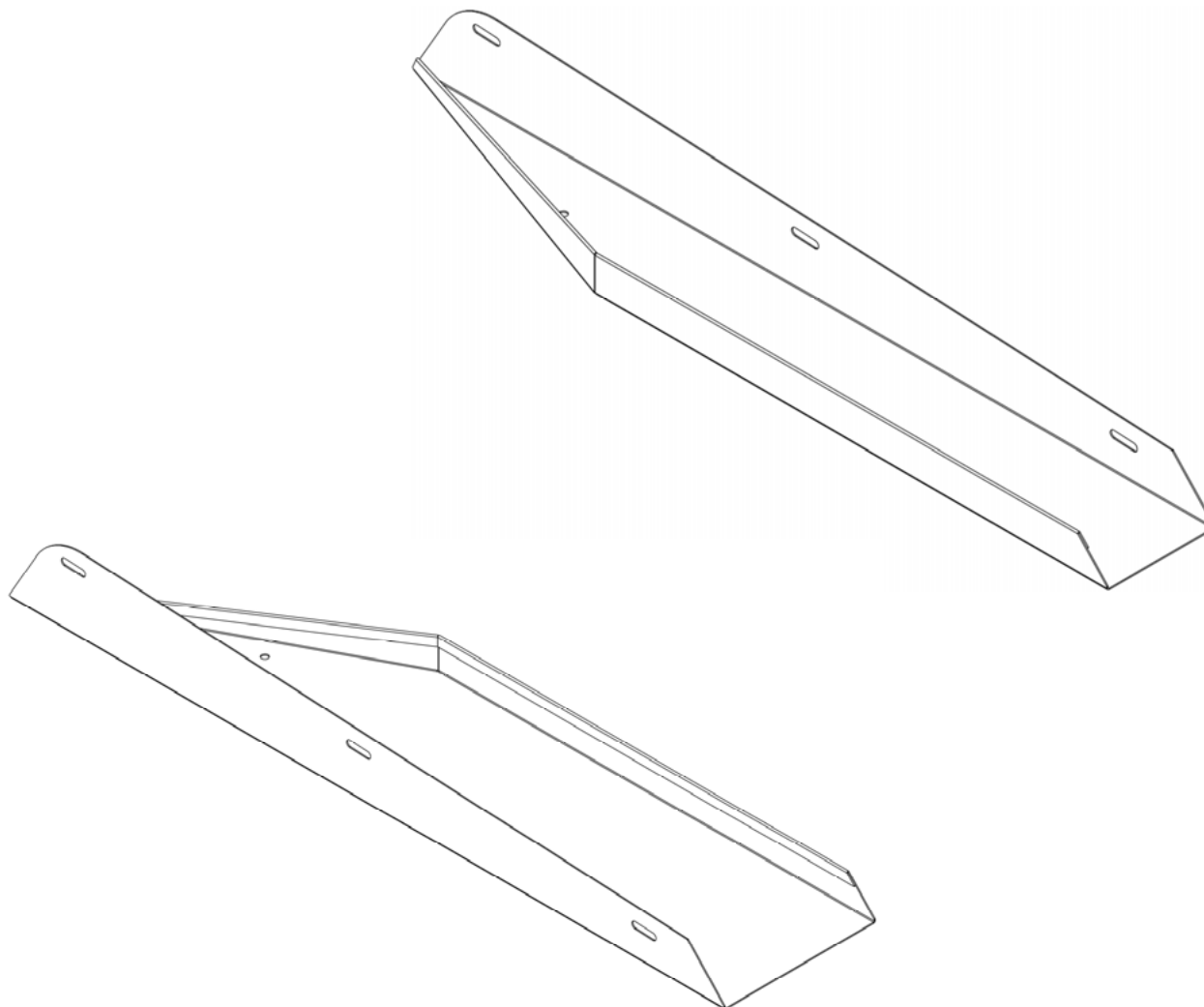


Item	Quantity	Item no.	Designation	Description
1	1	40062	Outboard pan 2 finger	Left side – 145 mm
	1	40058	Outboard pan 3 finger	Left side – 212 mm
	1	40065	Outboard pan 2 finger	Right side – 135 mm
	1	40060	Outboard pan 3 finger	Right side – 212 mm

Item	Item no.	13 ft	15 ft	17 ft	20 ft	24 ft	30 ft	35 ft	Designation
1	40062	-	-	-	-	-	-	1	Outboard pan 2 finger left side
	40058	1	1	1	1	1	1	-	Outboard pan 3 finger left side
	40065	-	-	1	-	-	1	1	Outboard pan 3 finger right side
	40060	1	1	-	1	1	-	-	Outboard pan 3 finger right side

Parts list

Outboard pans left and right - New Holland HD + Case 3050



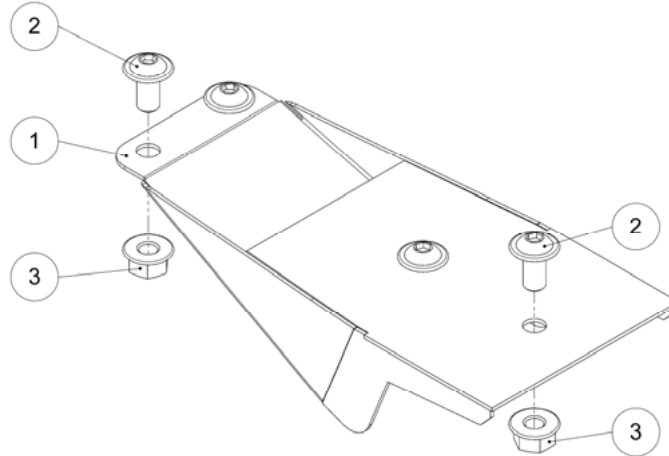
Item	Quantity	Item no.	Designation	Description
1	1	40062	Outboard pan 2 finger	Left side – 145 mm
	1	40058	Outboard pan 3 finger	Left side – 212 mm
	1	40065	Outboard pan 2 finger	Right side – 135 mm
	1	40060	Outboard pan 3 finger	Right side – 212 mm

Item	Item no.	16 ft	18 ft	20 ft	22 ft	25 ft	28 ft	30 ft	35 ft	41 ft	Designation
1	40062	-	1	1	-	-	-	-	1	1	Outboard pan 2 finger left side
	40058	1	-	-	1	1	1	1	-	-	Outboard pan 3 finger left side
	40065	-	-	1	-	-	-	1	1	1	Outboard pan 2 finger right side
	40060	1	1	-	1	1	1	-	-	-	Outboard pan 3 finger right side

Parts list

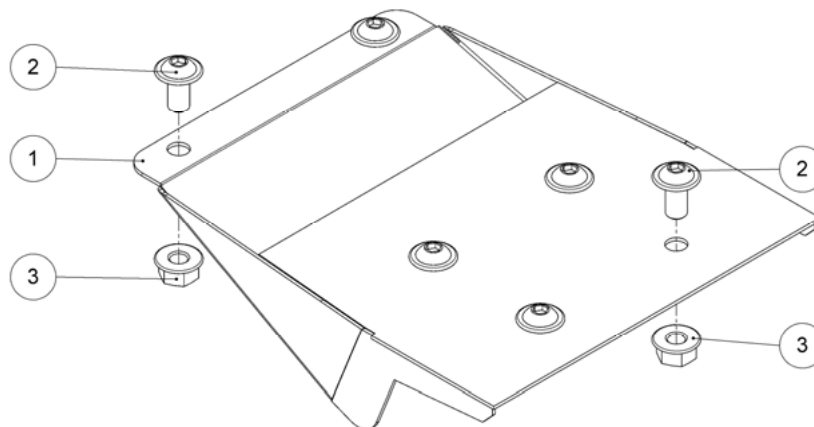
Finger covers - New Holland HC/EC/VF + Case 2030/2040/2050

Finger cover 2 finger low (92 mm)



Item	Quantity	Item no.	Designation	Description
1	1	40979	Finger cover – 2 finger	92 mm - low
2	4	70031	Countersunk hex button head bolt	ISO 7380-2 – M8x16
3	4	70005	Hex nut with flange	DIN 6923 – M8
1-3	-	40987	Outboard pan 2 finger low (92 mm)	Assembly - universal

Finger cover 3 finger low (168 mm)

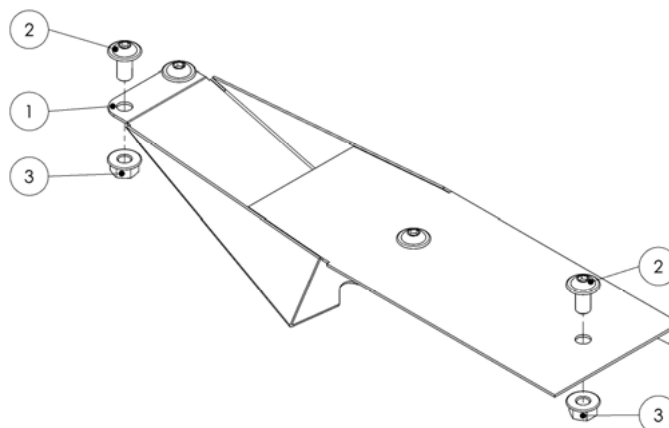


Item	Quantity	Item no.	Designation	Description
1	1	41057	Finger cover – 3 finger	168 mm - low
2	6	70031	Countersunk hex button head bolt	ISO 7380-2 – M8x16
3	6	70005	Hex nut with flange	DIN 6923 – M8
1-3	-	40981	Outboard pan 3 finger low (168 mm)	Assembly - universal

Parts list

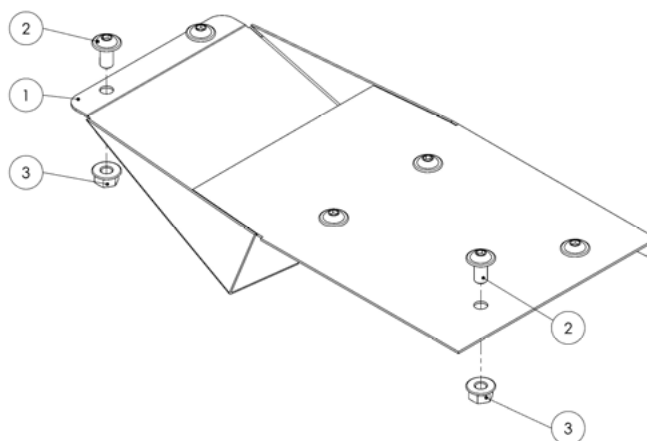
Finger covers - New Holland HD + Case 3050

Finger cover 2 finger left side high (92 mm)



Item	Quantity	Item no.	Designation	Description
1	1	40954	Finger cover – 2 finger left side high	adjustable
2	4	70031	Countersunk hex button head bolt	ISO 7380-2 – M8x16
3	4	70005	Hex nut with flange	DIN 6923 – M8
1-3	-	40795	Outboard pan 2 finger left side high (92 mm)	Assembly - universal

Finger cover 3 Finger left side high (168 mm)

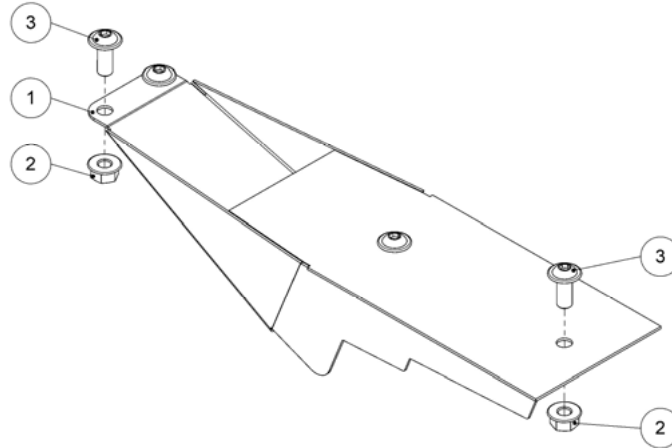


Item	Quantity	Item no.	Designation	Description
1	1	40947	Finger cover – 3 finger left side high	adjustable
2	6	70031	Countersunk hex button head bolt	ISO 7380-2 – M8x16
3	6	70005	Hex nut with flange	DIN 6923 – M8
1-3	-	40804	Outboard pan 3 finger left side high (168 mm)	Assembly - universal

Parts list

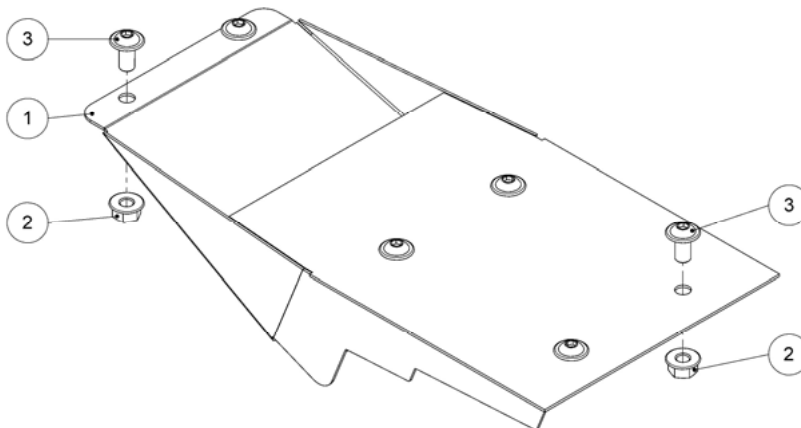
Finger covers - New Holland HD + Case 3050

Finger cover 2 finger right side high (92 mm)



Item	Quantity	Item no.	Designation	Description
1	1	40979	Finger cover – 2 finger right side high	adjustable
2	4	70005	Hex nut with flange	DIN 6923 – M8
3	4	70031	Countersunk hex button head bolt	ISO 7380-2 – M8x16
1-3	-	40793	Outboard pan 2 finger low (92 mm)	Assembly - universal

Finger cover 3 finger right side high (168 mm)



Item	Quantity	Item no.	Designation	Description
1	1	41085	Finger cover – 3 finger right side high	adjustable
2	6	70005	Hex nut with flange	DIN 6923 – M8
3	6	70031	Countersunk hex button head bolt	ISO 7380-2 – M8x16
1-3	-	40805	Outboard pan 3 finger low (168 mm)	Assembly - universal

Parts list

Overview assemblies finger covers

Outboard pans left side and right side – New Holland VF HD / Case 3050

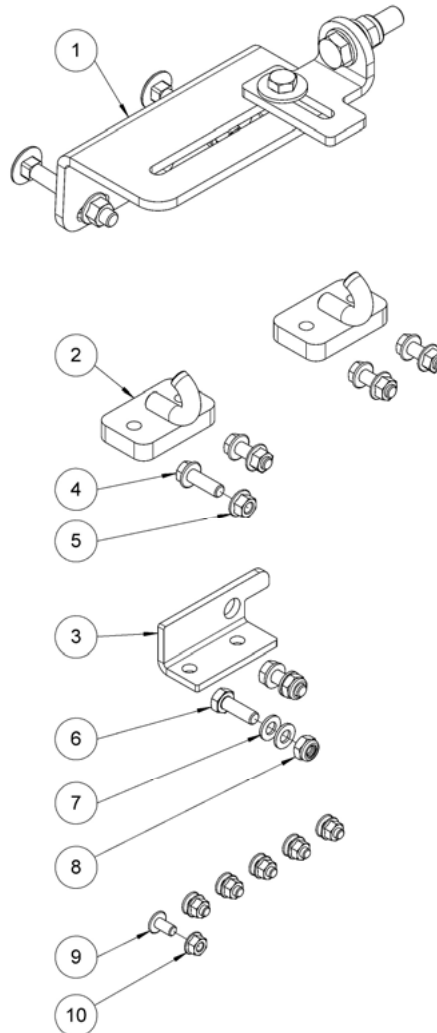
Item	13 ft	15 ft	17 ft	20 ft	24 ft	30 ft	35 ft	Designation
40987	-	1	2	2	1	1	2	Finger cover 2 finger low (92 mm)
40981	2	1	-	-	1	1	-	Finger cover 3 finger low (168 mm)

Outboard pans left side and right side – New Holland VF HD / Case 3050

Item	16 ft	18 ft	20 ft	22 ft	25 ft	28 ft	30 ft	35 ft	41 ft	Designation
40795	-	1	1	-	-	-	-	1	1	Finger cover 2 finger left side high (92 mm)
40804	1	-	-	1	1	1	1	-	-	Finger cover 3 finger left side high (168 mm)
40793	-	-	1	-	-	-	1	1	1	Finger cover 2 finger right side high (92 mm)
40805	1	1	-	1	1	1	-	-	-	Finger cover 3 finger right side high (168 mm)

Parts list

Accessory pack - New Holland HC/EC + Case 2030/2040

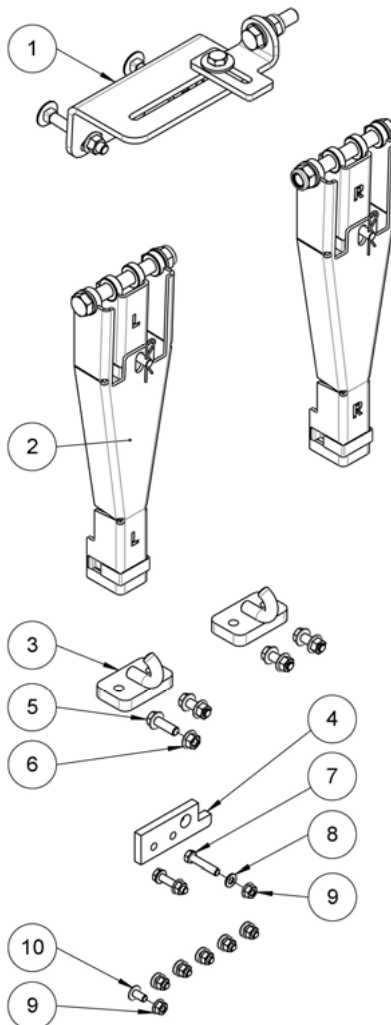


Item	Quantity	Item no	Designation	Description
1	1	41008	Central support complete – Assembly NH + Case	Accs. pack 13 – 20 ft *
	2			Accs. pack 24 – 30 ft *
	3			Accs. pack 35 – 41 ft *
2	2	21326	Upper hook complete	
3	1	22084	Angle	
4	4	70025	Serrated flange bolt	Ähnl. DIN 6921 – M10x30
5	4	70166	Serrated flange nut	DIN 6923 – M10
6	2	70061	Hex bolt	DIN 933 – M10x30
7	4	70338	Washer	DIN 125 A – 10
8	2	70021	Hex nut	DIN 985 – M10
9	6	70031	Countersunk hex button head bolt	ISO 7380-2 – M8x16
10	6	70005	Hex nut with flange	DIN 6923 – M8

*see page 75

Parts list

Accessory pack - New Holland VF + Case 2050

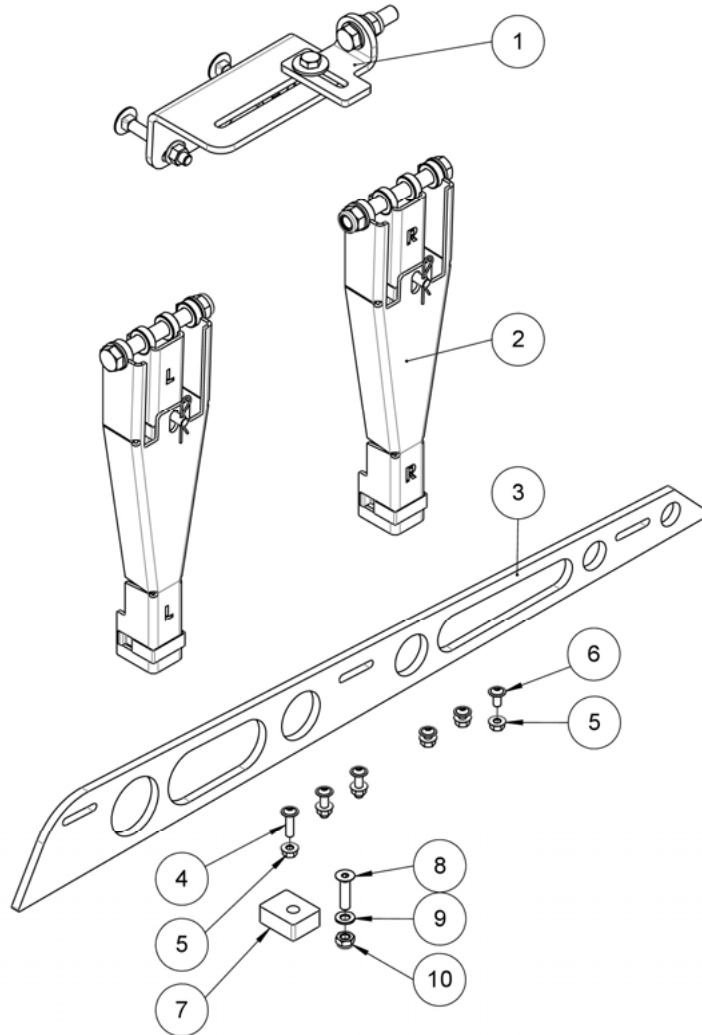


Item	Quantity	Item no	Designation	Description
1	1	41008	Central support complete – Assembly NH + Case	Accs. pack 13 – 20 ft *
	2			Accs. pack 24 – 30 ft *
	3			Accs. pack 35 – 41 ft *
2	1	40403	Reel support complete	See page 76
3	2	21326	Upper hook complete	
4	1	22009	Bracket	
5	4	70025	Serrated flange bolt	Ähnl. DIN 6921 – M10x30
6	4	70166	Serrated nut	DIN 6923 – M10
7	2	70106	Hex nut	DIN 933 – M8x40
8	2	70109	Washer	DIN 125 A - 8
9	8	70005	Hex nut with flange	DIN 6923 – M8
10	6	70031	Countersunk hex button head bolt	ISO 7380-2 – M8x16

*see page 75

Parts list

Accessory pack - New Holland HD + Case 3050



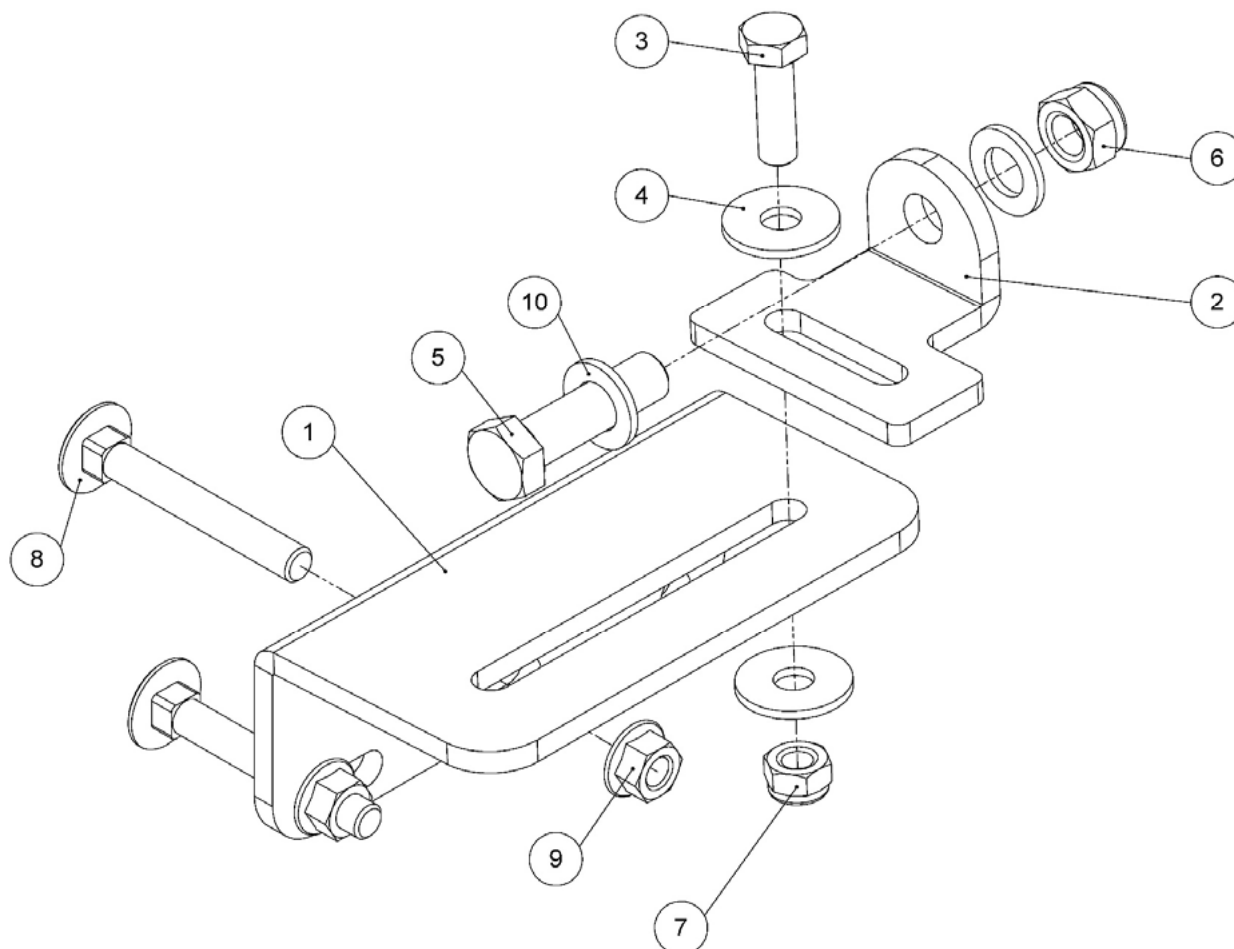
Item	Quantity	Item no	Designation	Description
1	1	41008	Central support complete – Assembly NH + Case	Accs. pack 16 – 20 ft *
	2			Accs. pack 22 – 41 ft *
2	1	40403	Reel support complete	See page 76
3	1	40404	Spacer plate	Thickness = 10 mm
4	3	091558	Countersunk hex button head bolt	ISO 7380-2 – M8x30
5	6	70005	Hex nut with flange	DIN 6923 – M8
6	3	70031	Countersunk hex button head bolt	ISO 7380-2 – M8x16
7	1	40406	Reel support upper left side	
8	1	70738	Countersunk bolt	DIN 7991 – M10x40
9	1	70075	Washer	DIN 125 A – 10
10	1	70021	Hex nut	DIN 985 – M10

*see page 75

Parts list

Central support

New Holland VF + Case 2050 & New Holland-HD + Case 3050

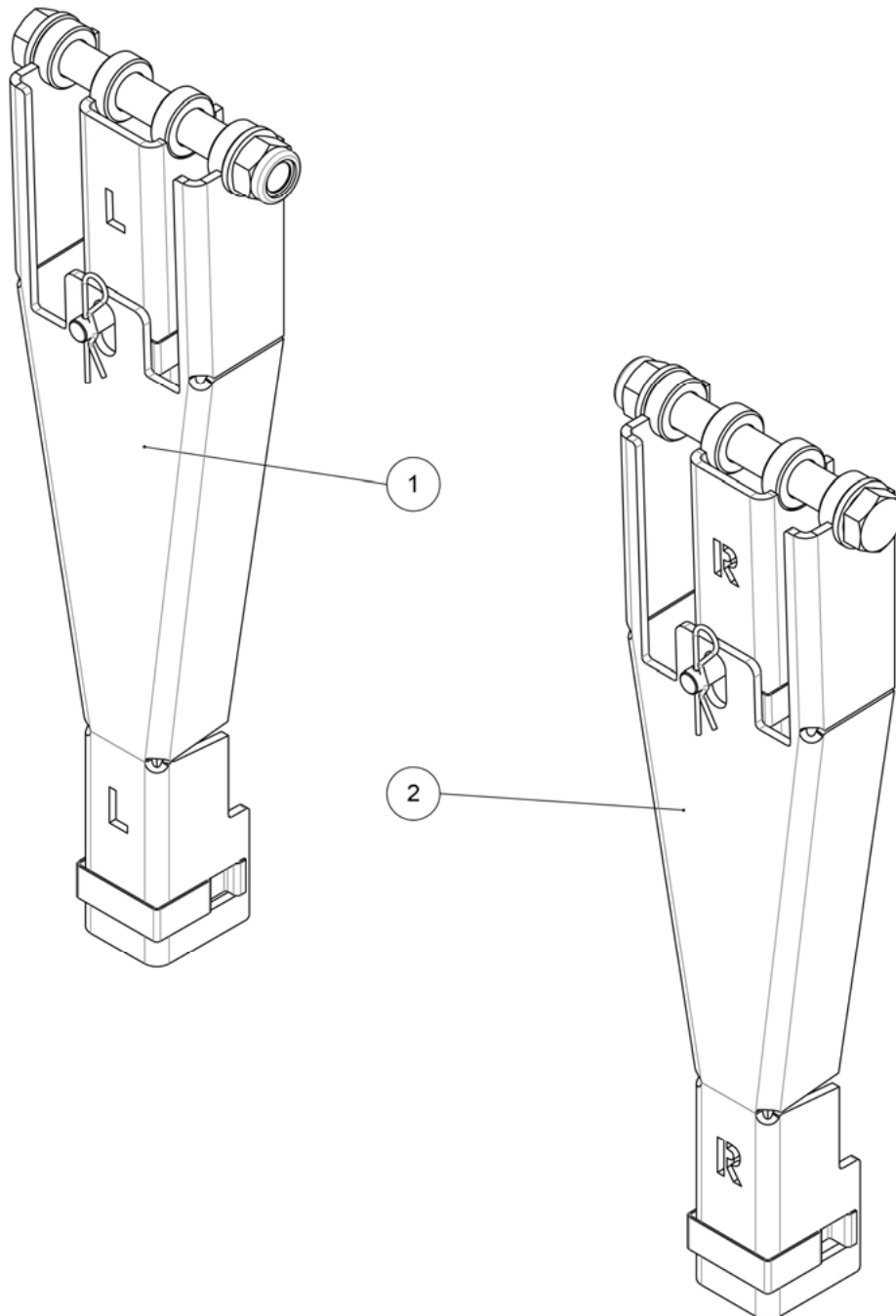


Item	Quantity	Item no	Designation	Description
1	1	40178	Central support	
2	1	40179	Angle	
3	1	70348	Hex nut	DIN 933 - M12x40
4	2	70352	Washer	DIN 9021 - 12
5	1	70147	Hex bolt	DIN 933 - M16x60
6	1	70023	Hex nut	DIN 985 - M16
7	1	70022	Hex nut	DIN 985 - M12
8	2	70205	Carriage bolt	DIN 603 - M12x90
9	2	70012	Hex nut with flange	DIN 6923 - M12
10	2	70078	Washer	DIN 125 A - 16

Parts list

Reel supports set

New Holland VF + Case 2050 & New Holland-HD + Case 3050



Item	Quantity	Item no	Designation	Description
1	1	41164	Reel support left	New Holland VF/HD + Case 2050/3050
2	1	41165	Reel support right	New Holland VF/HD + Case 2050/3050

Torques for Metric Bolts

Bolts	Grade 4.8				Grade 8.8 oder 9.8				Grade 10.9				Grade 12.9			
	Oiled		Dry		Oiled		Dry		Oiled		Dry		Oiled		Dry	
Size	N•m	lb-in	N•m	lb-in	N•m	lb-in	N•m	lb-in	N•m	lb-in	N•m	lb-in	N•m	lb-in	N•m	lb-in
M6	4,7	42	6	53	8,9	79	11,3	100	13	115	16,5	146	15,5	137	19,5	172
M8	11,5	102	14,5	128	22	194	27,5	243	32	23,5	40	29,5	37	27,5	47	35
M10	23	204	29	21	43	32	55	40	63	46	80	59	75	55	95	70
M12	40	29,5	50	37	75	55	95	70	110	80	140	105	130	95	165	120
M14	63	46	80	59	120	88	150	110	175	130	220	165	205	150	260	190
M16	100	74	125	92	190	140	240	175	275	200	350	255	320	235	400	300
M18	135	100	170	125	265	195	330	245	375	275	475	350	440	325	560	410
M20	190	140	245	180	375	275	475	350	530	390	675	500	625	460	790	580
M22	265	195	330	245	510	375	650	480	725	535	920	680	850	625	1080	800
M24	330	245	425	315	650	80	820	600	920	680	1150	850	1080	800	1350	1000
M27	490	360	625	460	950	700	1200	885	1350	1000	1700	1250	1580	1160	2000	1475
M30	660	490	850	625	1290	950	1630	1200	1850	1350	2300	1700	2140	1580	2700	2000
M33	900	665	1150	850	1750	1300	2200	1625	2500	1850	3150	2325	2900	2150	3700	2730
M36	1150	850	1450	1075	2250	1650	2850	2100	3200	2350	4050	3000	3750	2770	4750	3500
<p>The tightening torques given are guideline values. Do NOT use these values if a different torque or another securing method is specified for a specific application. For stainless steel bolts and nuts for stirrup bolts, see specific instructions. Tighten locking nuts with plastic insert or edge-raised steel locking nuts to the corresponding torque for dry bolts and nuts given in the table unless otherwise instructed.</p>								<p>Shear pins are designed to break at a certain load. When replacing shear pins, use only pins of the same grade. When replacing bolts and nuts, make sure that equivalent parts of the same or a higher grade are used. Tighten higher-grade nuts and bolts to the same torque as the originally used parts. Make sure that the thread is clean and the bolts correctly fitted. If possible, oil normal and galvanised nuts and bolts (except for locking nuts and wheel studs or nuts) unless specified otherwise for the specific application.</p>								
<p>“Oiled” means that a lubricant, such as engine oil, is applied to the bolts or that phosphatized or oiled bolts with a size from M20 are used.</p>																
<p>“Dry” means the use of normal or galvanised bolts without lubrication or bolts with a size between M6 and M18 that are zinc-coated.</p>																

General terms of guarantee

Zürn Harvesting GmbH & Co. KG, Kapellenstraße 1, D-74214 Schöntal-Westernhausen (hereinafter “Zürn Harvesting”) hereby certifies for each customer who has purchased a new Zürn Harvesting machine from an authorised dealer that the materials and workmanship of this machine are guaranteed under the conditions specified below, providing that the machine is put into operation and maintained in accordance with the specifications in the operating instructions.

I. Duration of the guarantee

The guarantee period is one year from delivery of the machine by Zürn Harvesting and is valid for up to 500 operating hours within this period. The replacement of individual parts or repair will not prolong the above guarantee period for the machine.

II. Scope of the guarantee

The guarantee embraces only the reimbursement or repair of the parts and reimbursement of work time required in order to effect the repair, based on the repair times allowed by Zürn Harvesting, under the prerequisite that the fault was determined by our technical customer service department and was acknowledged by Zürn Harvesting to be attributable to faulty materials or workmanship. Replaced parts will become the property of Zürn Harvesting. The customer must allow services received from the vendor/dealer under warranty to be credited to the guarantee.

The guarantee does not cover any further claims against Zürn Harvesting. This means in particular that travel and transport costs will not be reimbursed, nor will Zürn Harvesting be liable for consequential damage, such as loss of harvest or losses of income.

III. Limitations of the guarantee

The guarantee does not apply to defects or faults that are attributable to:

- usual wear and tear;
- failure to heed operating, storage or transport instructions contained in the operating manual;
- use other than as intended, inadequate maintenance, inexpert operation or excessive use;
- damage caused to the machine or its equipment caused during transportation or loading; machines, equipment and parts are shipped at the risk of the recipient;
- external influences on the machine, e.g. third-party damage, weathering or other natural occurrences;
- circumstances that were known to the buyer at the time of purchase.

The guarantee will be rendered null and void if technical modifications are made to the machine without the written consent of Zürn Harvesting or if spare parts other than original Zürn Harvesting spare parts are installed and/or if repairs were not carried out by an authorised dealer. The guarantee is likewise voided if the machine was not put into service for the first time by the dealer in accordance with the instructions of Zürn Harvesting.

General terms of guarantee

IV. Assertion of the guarantee

The terms of the guarantee are dependent upon precise observance of the following regulations by both the dealer and the purchaser:

- The guarantee card (machine card) completed by the dealer and customer must be returned to Zürn Harvesting by post or e-mail as soon as the machine has been delivered to the customer.
- Applications for guarantee claims must be formulated on the corresponding Zürn Harvesting form and presented to Zürn Harvesting by the dealer within one calendar month of discovery of the defect/fault.
- The application must be completed legibly and must contain the following information:
 - Name, address and dealer customer number
 - Name and address of the purchaser
 - Exact machine type and designation
 - Complete serial number of the machine
 - Date of delivery to the dealer and to the purchaser
 - Date of the claim
 - Number of operating hours or acreage harvested by the machine
 - Exact description of the damage and information regarding the probable cause
 - Quantity, item numbers and description of damaged parts

The parts reported as damaged must be returned to Zürn Harvesting free of charge for appraisal, complete with a copy of the guarantee claim application. Any costs incurred for returning the parts replaced or repaired will be borne by the sender.

If the guarantee claim application is refused, the dealer or the customer has a period of 15 days, starting from the day the Zürn Harvesting decision was received, to demand return of the damaged parts. Once this period has elapsed, the parts will be disposed of.

V. Additional clauses

Claims under the guarantee may not be transferred to third parties without the prior, written consent of Zürn Harvesting.

The dealer has neither the right nor the authority to make declarations or to enter into a commitment etc., whether express or implied, in the name of Zürn Harvesting.

The technical support for repair of the machine given by Zürn Harvesting or their representatives excludes any further liability whatsoever by Zürn Harvesting and has no influence whatsoever on the existing terms of guarantee.

Zürn Harvesting reserves the right to modify the design of the machine without prior notice. It is not obliged to transfer such modifications to machines which have already been sold or are in use.

Furthermore, due to the rapid development of the state of the art, no guarantee can be given for the machine descriptions contained in these operating instructions or other technical leaflets and data sheets.


EG- Konformitätserklärung

EG- Konformitätserklärung nach Maschinenrichtlinie 2006/42/EG

Bitte sorgfältig aufbewahren, jedoch nicht im Fahrzeug

EU CERTIFICATE OF CONFORMITY According to Machinery Directive 2006/42/EG

Please keep safely, not inside the vehicle

Hiermit bestätigt die <i>Hereby declares</i>	Zürn Harvesting GmbH & Co. KG	
in alleiniger Verantwortung dass das landwirtschaftliche Anbaugerät <i>the full responsibility for the agricultural implement</i>	Fabrikmarke <i>Brand</i>	Zürn Harvesting GmbH
	Typ <i>Type</i>	SBV
genehmigt in <i>approved in</i>	Schoental	
am <i>on</i>	03.03.2023	
durch den <i>by the</i>	Hersteller / manufacturer	
den grundlegenden Sicherheits- und Gesundheitsanforderungen der Richtlinie 2006/42/EG entspricht. <i>to full fill the complete safety- and health requirements according to machinery directive 2006/42/EG.</i>		
Zur sachgerechten Umsetzung der in den EU- Richtlinien genannten Sicherheits- und Gesundheitsanforderungen wurden folgende Normen herangezogen: <i>For proper implementation according to the EU- Directives for health and safety requirements, the following standards were used:</i>	DIN EN ISO 4254-1 (09/16) DIN EN ISO 4254-7 (12/19)	
Geschehen zu <i>Done at</i>	Schoental	
am <i>on</i>	03/03/23	
	 Rolf Zürn Geschäftsführer, CEO	

Contacts

Ersatzteilbestellung / Spare parts order / Commande des pièces:

Tel.: 0049 (0) 6297 / 92885-27

Fax. 0049 (0) 6297 / 92885-19

E-Mail: parts@zuern.de

Zürn Harvesting GmbH & Co. KG
Eichenstraße 27
D-74747 Ravenstein- Merchingen

Tel.: +49 6297 92885-0
Fax: +49 6297 92885-19
E-Mail: info@zuern.de

Internet: www.zuern.de