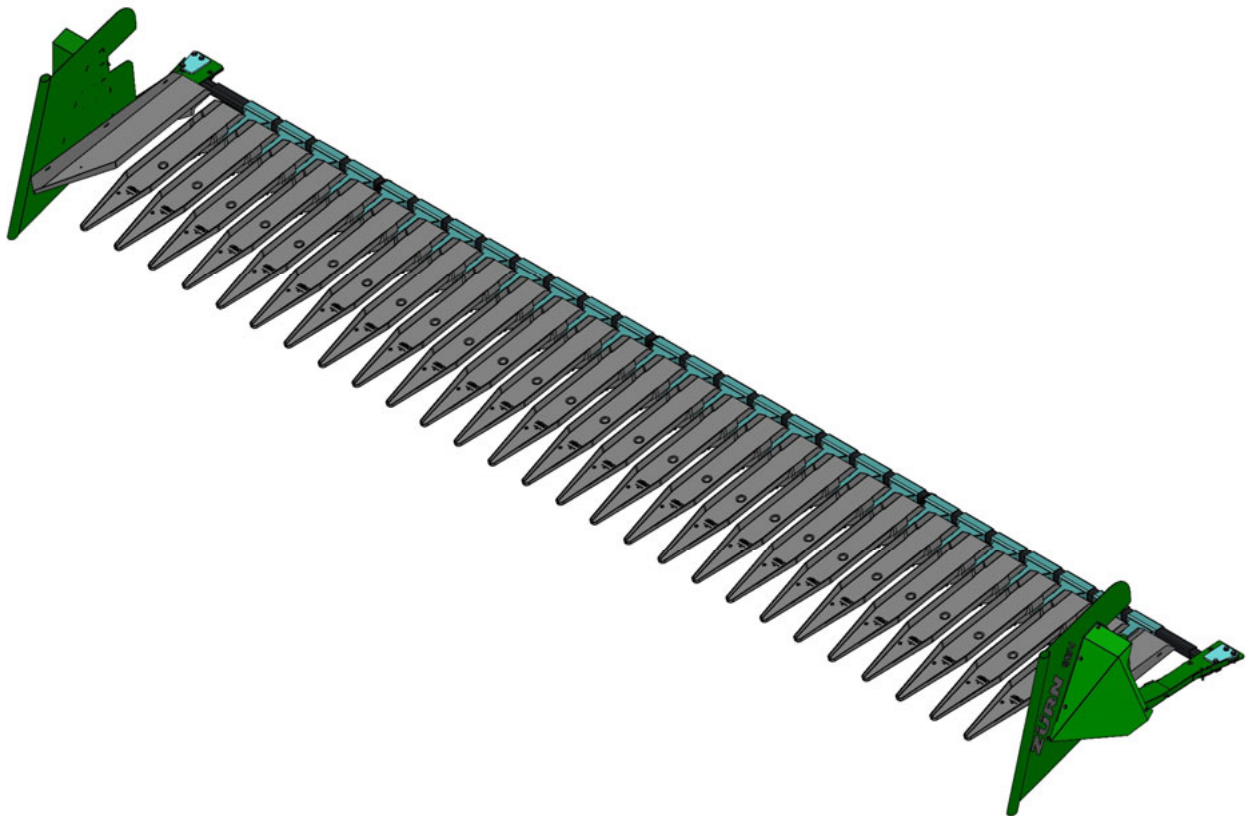


FITTING INSTRUCTIONS AND PARTS LIST

SBV Sunflower Extension



For John Deere series 600X / 700X
cutting platforms

Masthead

Title: Fiting instructions and parts list sunflower extensions
Manufacturer: Zürn Harvesting GmbH & Co. KG
Schöntal
Applicable to: SBV for cutting platforms John Deere 600X / 700X
Print number: 41049

3rd issue 2024 (Version C)

Editorial date 01/2024

© Zürn Harvesting GmbH & Co. KG

Author: Naiome Köllisch

All rights reserved, also applies to the translation.

No part of this operating manual must be reproduced in any form (print, photocopy or any other process) or processed, duplicated or distributed using electronic systems without the written permission of the Zürn Harvesting GmbH & Co. KG, Schöntal.

We reserve the right to make technical amendments.

Printed on paper made from chlorine-free and acid-free bleached pulp.

Foreword

This machine is designed only for the usual application in agricultural work or similar activities. Any other use beyond this is deemed improper use of the machine. The manufacturer accepts no liability whatsoever for damage resulting from improper use; the risk will be borne solely by the user. Proper use also includes complying with the operation, maintenance and service conditions specified by the manufacturer.

Read this operating manual thoroughly to familiarise yourself with the correct operation and maintenance of the machine and to prevent injuries or damage to the machine. Not doing so can result in injuries or machine damage. This operating manual and the safety labels on the machine may also be available in other languages: please enquire at your dealership.

This operating manual is part of the machine and should be handed over to the purchaser if the machine is re-sold.

Dimensions specified in this operating manual are metric. Use only appropriate parts and bolts. Different spanners are required for metric bolts and bolts with imperial (inch) dimensions.

The designations "left" and "right" are with reference to the forward direction of the machine.

Enter the serial number in the first section of the operating manual. Please record all numbers accurately. In case of theft, these numbers can be important for tracing the machine. Your dealer also needs these numbers when you order spare parts. It is a good idea to keep a second record of these numbers in another location.

Your dealer has carried out an inspection of the machine prior to delivery. A further inspection should be carried out by your dealer after the first 20 to 50 hours of operation in order to ensure the best possible performance for the machine.

This machine must only be used, serviced and repaired by persons who are familiar with it and who have been briefed about its hazards. The relevant accident prevention regulations and other generally recognized rules and laws for safety, occupational health and road traffic must also be observed. Unauthorized changes to this trailer release the manufacturer from liability for any resulting damage.

Contents

Masthead	2
Foreword	3
Contents	4
Type Plates	6
Safety Instructions	7
Safety instructions for technical staff and operators	8
Hydraulic system	9
Universal drive shafts	10
Ejection of stones and foreign objects	11
Precautions for use and shunting	12
Precautions for maintenance and repair work	12
Precautions for travelling on public roads	13
Modifications to the machine	14
Welding	14
Bolted assemblies	14
Using original parts	15
Waste prevention	15
Safety decals	16
Important information	19
Assembly instructions	20
Assembling the supporting bars	20
Mounting the brackets	21
Attaching the side plates	23
Preparing the header for attaching the sunflower extension	24
Removing the side knife drive	24
Attaching the sunflower extension to the header	28
Attaching the sunflower extension to the header	29
Fitting the pan holders	31
Installing the central support	33
Mounting the central pans	34
Attaching the side plates and the supporting arms	43
Installing the reel boards	44
Installing the central support	47
Attachment and removal of the assembled sunflower extension	48
Removing the extension from the header	48
Attaching the extension to the header	48
Parts list	50
Right side plates	50
Left side plates	52
Supporting bars	55
Reel plates	56
Plastic pans - 600X / 700X	58
Plastic pans	59
Outboard pans left and right	60

Accessory pack – 600X	62
Accessory pack – 700X	63
Reel support.....	65
Central support assembly 600X.....	66
Central support assembly 700X.....	68
Accessories - locking units right and left.....	70
Torques for Metric Bolts	72
General terms of guarantee	73
EG- Konformitätserklärung	75
Contacts	76

Type Plates

Please make a note of the type designation and serial number of your machine here. This information must be given to the authorised dealer when ordering spare parts or making guarantee enquiries.

Type: _____

Serial number: _____



Safety Instructions

Explaining the symbols used in this document

This symbol indicates a potentially hazardous situation which, if not avoided, may lead to personal injury.



This symbol indicates special rules or procedures that need to be observed to avoid machine damage.



This symbol indicates special technical instructions.



The illustrations in this manual are used as examples and may differ from the product. All information and data are subject to change by the manufacturer alone without prior notice.

Safety Instructions

Safety instructions for technical staff and operators

Before using the machine, carefully read and observe all safety rules listed in this manual and observe all decals on the machine.

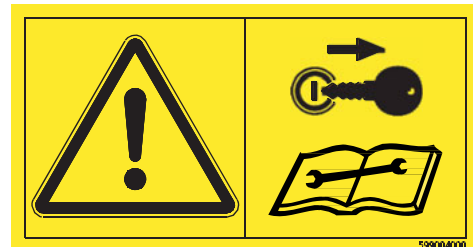
Before starting work, make sure that you are familiar with all mechanisms and controls and their functions. During operation is too late!

Never leave the machine to anyone who has not been trained in using and operating it properly.

Contact your Zürn sales partner if you have problems understanding certain parts of this manual.



Always apply the handbrake on the header transporter and shut off the engine of the towing vehicle before you work on the transporter. Remove the ignition key and wait until all moving parts have come to a complete stop.



Wear close-fitting clothes! Loose clothing can easily get caught in moving machine parts.

Wear protective gear that suits the work at hand (gloves, footwear, goggles, helmet, ear protectors, etc.).

Any ropes, cables, linkages, etc. of remote-controlled mechanisms must be routed and installed in such a way that they do not cause unintentional machine action leading to accidents and damage. This applies to all transport and working positions.

Before each use verify that nuts and bolts are tight - especially those that attach tools such as blades. Retighten if necessary.

Before you use the machine make sure all safety features and guards are in place, in protective position and operable. Immediately replace any inoperable safety features.



Safety Instructions

Hydraulic system

Attention! The hydraulic system is under high pressure. Maximum operating pressure: 200 bar (2900 psi).

Before connecting hydraulic hoses to the hydraulic system of the machine, make certain that it is not pressurised. Before disconnecting hydraulic hoses, depressurise the hydraulic system.

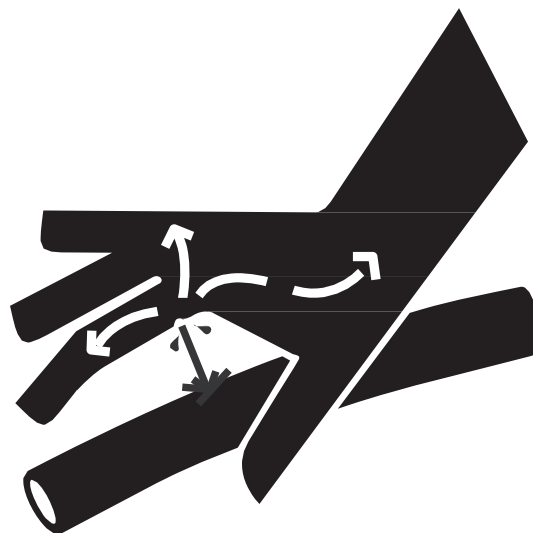
In order to prevent connecting the hydraulic hoses to the wrong connections, colour code the hoses and their respective connections without fail. Risk of injury through reverse function because of reversed connections (e.g. raising instead of lowering).

Inspect the hydraulic hoses at regular intervals. Hydraulic hoses must always be replaced after 5 years at the latest. If hydraulic hoses are found to be damaged or worn, they must be replaced immediately. The replacement hydraulic hoses must comply with the technical requirements specified by the manufacturer.

Only use the appropriate resources when looking for leakages. Protect body and hands against pressurised fluids.

Oil escaping under pressure can puncture the skin and cause severe injuries. In the event of injury, seek medical attention immediately. There is a risk of infection.

Before carrying out any work on the hydraulic system, lower the machine to the ground, depressurise the hydraulic system, switch the engine OFF, remove the ignition key and wait until all moving parts have come to a complete standstill.



Safety Instructions

Universal drive shafts

Only use universal drive shafts that have been provided by or prescribed by the manufacturer.

The protective tube and protective cone on the PTO shaft and all PTO shaft protective devices on the header must be in place and in good condition.

Worn or damaged protective parts must be renewed immediately. Defective protective parts or an unprotected universal drive shaft can cause severe or even fatal injuries.

Always wear close-fitting clothing to prevent being caught up in a rotating universal drive shaft.

Before connecting or disconnecting a universal drive shaft and before any intervention in the header, uncouple the main drive, switch the engine OFF, remove the ignition key and wait until all moving parts have come to a complete standstill.

When using universal drive shafts with and overload or free-wheel clutch, always connect the overload or free-wheel clutch to the machine.

Always make certain that the universal drive shaft is connected and latched in position correctly.

Before switching the PTO shaft ON, make certain that the speed and direction of rotation of the attachment conform with the speed and direction of rotation of the machine specified by the manufacturer.

Before switching the PTO shaft ON, make certain that there are no persons or animals within the machine's danger zone. Never switch the PTO shaft ON or engage it if the forage harvester's motor is switched ON.



Safety Instructions

Ejection of stones and foreign objects

To increase the safety of the driver, only use the header with an enclosed driver's cab. The area to be mown must be free of foreign objects. Stony or rocky ground should not be mowed. If this is unavoidable, additional safety measures must be taken, e.g.:

- Fit Macrolon panels to the floor, sides and rear of the driver's cab or fit finely meshed grilles to the outside.
- Adjust the cutting height such that any contact with stones or rocks is excluded.

Never switch the header ON when persons are standing in the vicinity of the machine.

Foreign objects can be ejected from the machine, even if the machine is in proper use. Stones and other foreign objects that are caught up by rotating parts can be thrown over great distances. Exclude all persons from the danger zone.

The guard plates and protective aprons lessen the risk of stones and foreign objects being ejected. It must therefore be ascertained that all protective devices are fitted and in perfect condition when the header is in use.

Check the state of the protective aprons at regular intervals. Worn, damaged or missing parts must be replaced immediately.



Safety Instructions

Precautions for use and shunting

Before changing over from transport to working position and vice versa, ensure that no persons are within the manoeuvring zone of the machine.

Precautions for maintenance and repair work

Before carrying out any work or intervention, shut off the engine, remove the ignition key, wait until all moving parts have come to a complete standstill and apply the parking brake. Depressurise the hydraulic system.

Prop up and secure any machine parts that are raised for maintenance or repair.

Disconnect all electric lines from the towing vehicle before working on the electric system or before welding on the transporter.

Repairs on parts under strain or pressure (springs, accumulators, etc.) must be carried out solely by specialist staff who have the necessary qualification and special tools.

Wear protective gear that suits the work at hand (gloves, footwear, goggles, helmet, ear protectors, etc.).

Do not weld, solder or use flame cutters near pressurised liquids or highly flammable products.

Only use original spare parts to ensure your personal safety and correct functioning of the machine.

We strongly recommend to have the machine and its parts and fastening elements checked by your authorised Zürn Harvesting sales partner after each season.



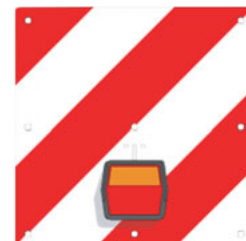
Safety Instructions

Precautions for travelling on public roads

Dimensions

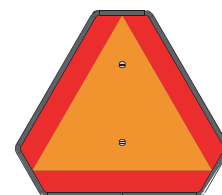
The combination must comply with local requirements relating to maximum dimensions for travel on public roads. In case of doubt, seek information beforehand from the relevant authorities.

If the combination exceeds the maximum dimensions and yet has to be transported on public roads, contact the local authorities to obtain a special permit before you travel on public roads.



Transport position

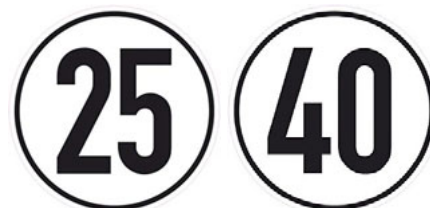
Before travelling on public roads, place and secure the machine on a suitable transporter, following the instructions in this manual.



Lights and warning devices

Before travelling on public roads, ensure that all required lights and warning panels are in place.

Check these devices for proper functioning and visibility. Replace any missing or damaged parts immediately.



Maximum speed

Always comply with the current regulations regarding speed limits on public roads.

When travelling on public roads, always comply with the relevant regulations.

Before travelling on public roads and before each use check the header transporter and the towing vehicle for road safety and operational safety!



Safety Instructions

Modifications to the machine

Any modifications to the machine and its optional features must be approved in writing by the manufacturer. The warranty and product liability will be voided, if such modifications are carried out without the written approval of the manufacturer.

The manufacturer's liability refers to the original condition in which the vehicle is delivered to the country of destination as contractually agreed by the manufacturer.

Any unauthorised modifications to this machine render any manufacturer liability for any consequential damage null and void.

Welding

Ensure that any type of welding is carried out by qualified and certified welders. Welding must not affect the warranted properties of the steel structure. In case of non-compliance, the manufacturer shall consider the weldment as an unauthorised modification to the transporter.

Bolted assemblies

Observe the property class when fastening and replacing bolts and nuts (see the table in this manual and the parts list).

After assembling the transporter, tighten all bolts to the proper torque.

For special torques read the assembly instructions or ask the manufacturer.

For any torques of regular bolts refer to the table.

Self-clinching bolts and nuts must be replaced by new ones after they have been removed during a repair.

This is necessary as nuts with a self-clinching fastener lose their holding power with each reuse.

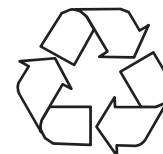
Safety Instructions

Using original parts

Only use original parts sourced from the manufacturer. This is mandatory. Using third-party parts voids the manufacturer warranty including for consequential damage resulting from this.

Waste prevention

Never pour environmentally hazardous products (oils, greases, filters, etc.) into a sink or empty them onto the ground or in other spaces. Never burn or throw away used tyres. Have waste disposed of by specialised disposal companies.



Safety Instructions

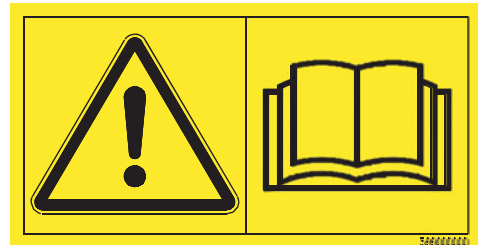
Safety decals

Safety decals are placed in various locations on the machine. Always follow these instructions! The decals alert operators to potential hazards and provide rules of practice to cut out any risk of an accident.

Keep the safety decals clean and legible and replace them immediately when damaged, worn or lost.

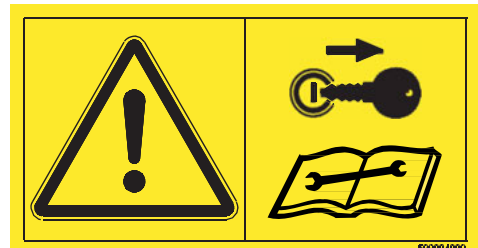
Operating instructions

The operating instructions contain all the necessary information for the safe use of the machine. To avoid the risk of accidents, read the operating instructions carefully and follow all instructions.



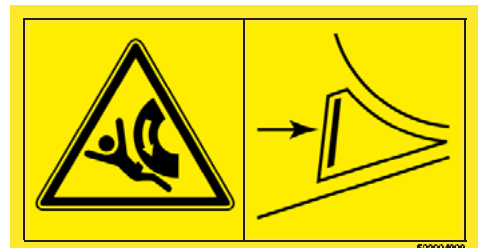
Working on and intervening in the header

Before carrying out any type of work on or intervention in the header, disengage the clutch in the driveline, shut off the engine, remove the ignition key, wait until all moving parts have come to a complete standstill and apply the parking brake.



Parking the transporter

Secure the transporter with a wheel chock before removing it from the towing vehicle or parking it.



Safety Instructions

Placing the header on the transporter

When placing the header on the transporter, keep clear of the danger zone between the header and the transporter.



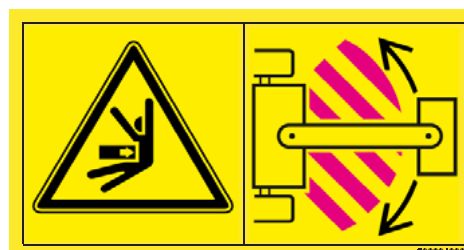
The header is lifted

Keep clear of the header swing area when placing it on the transporter.



Risk of crushing

Keep clear of the drawbar unit and all steering elements (e.g. turntables, steering rods) while operating the machine. Risk of being crushed at a full lock turn.



Retighten the wheel bolts

Retighten the nuts after the first journey.



Safety Instructions

Ejection and foreign objects

Stones and other foreign objects can be thrown out over long distances. The protective devices must always be in place and in a perfect state. Always keep a safe distance from the machine.



Do not open guards

Do not open or remove protective devices during operation or while the engine is running.



Do not open guards

Do not open or remove protective devices during operation or while the engine is running.



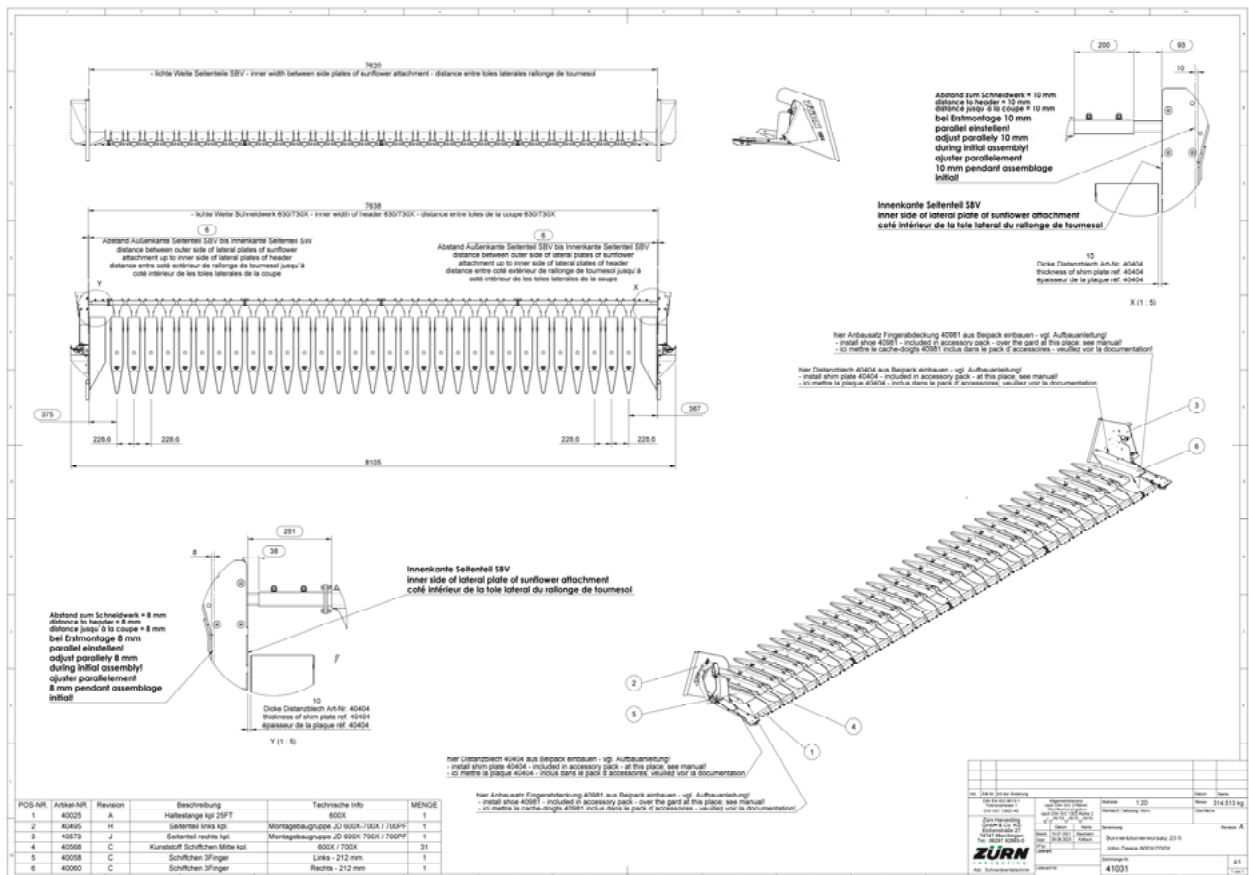
Rotating Auger

Never reach into the rotating auger.



Important information

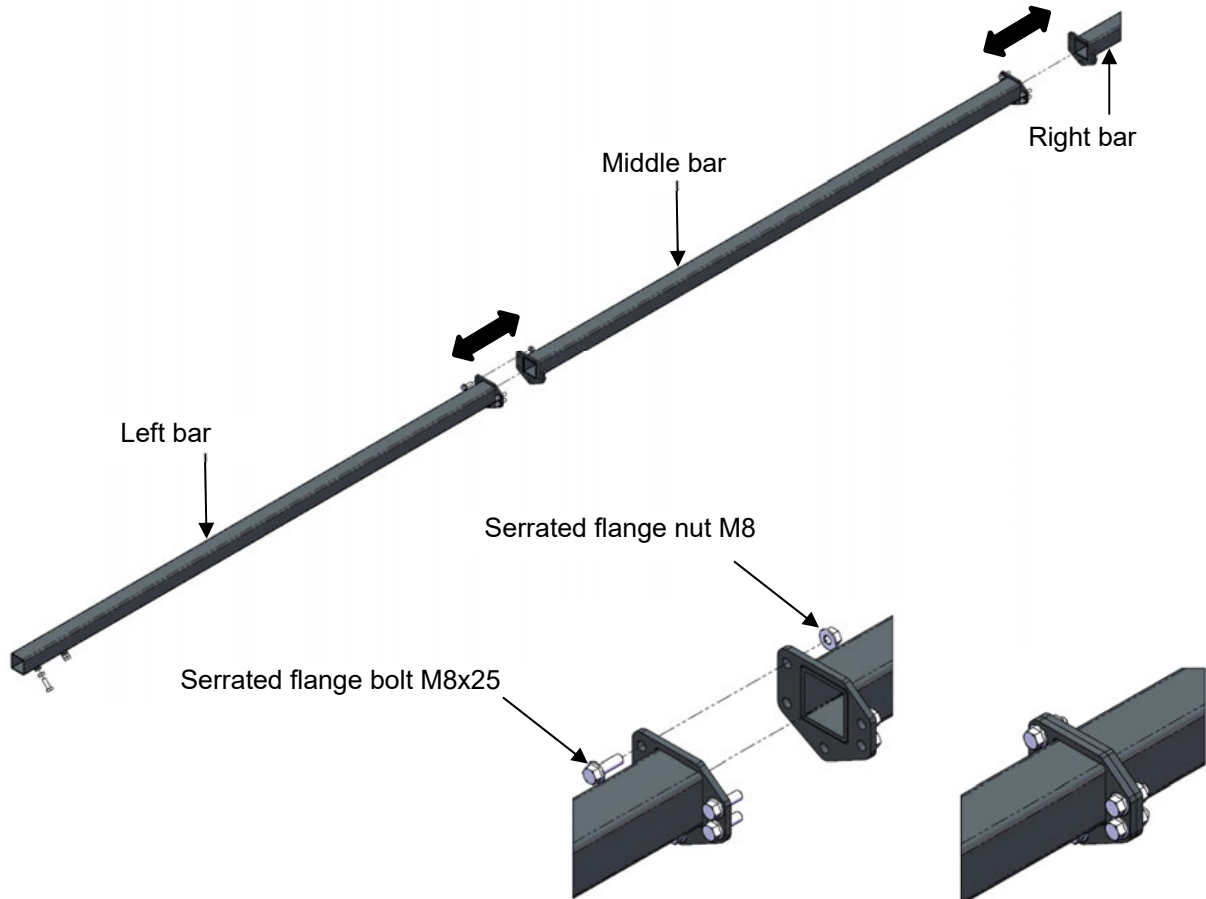
Each sunflower attachment is accompanied by a laminated overall drawing of the product in A3 format. This overall drawing contains important dimensions and instructions for the installation of the sunflower attachment to the header. These must be taken into account for correct and successful installation.



Assembly instructions

Assembling the supporting bars

The individual sections of the supporting bars are bolted together as shown in the illustration below. The flanges are attached with five M8x25 serrated flange bolts and M8 serrated flange nuts.



IMPORTANT!

Ensure the flanged bar ends mate exactly. Put the supporting bars on several stacks of pallets, about waist-high, placed next to each other. This makes it easier to retract the header with the combine.



Depending on the header length, the number of supporting bars and the length of the of the right supporting bar, for the number and dimensions please refer to the tables on pages 54 to 55.

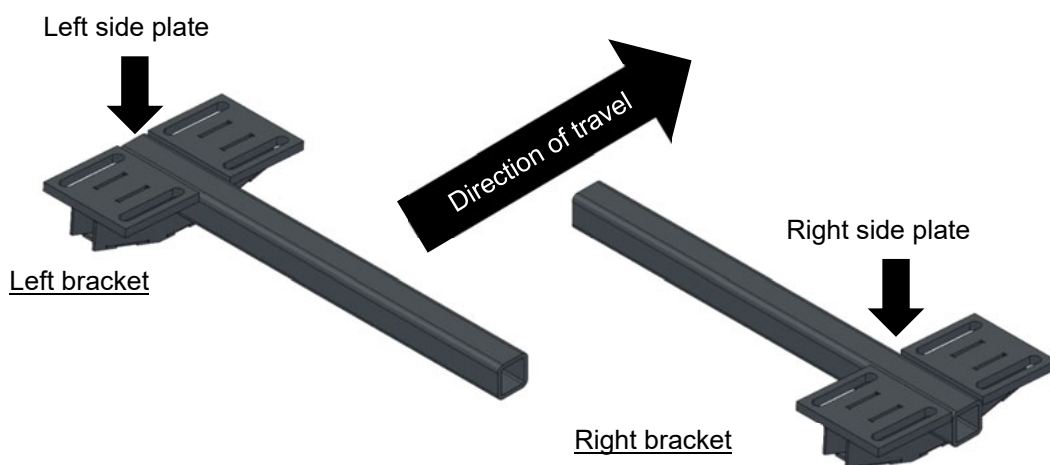


Assembly instructions

Mounting the brackets

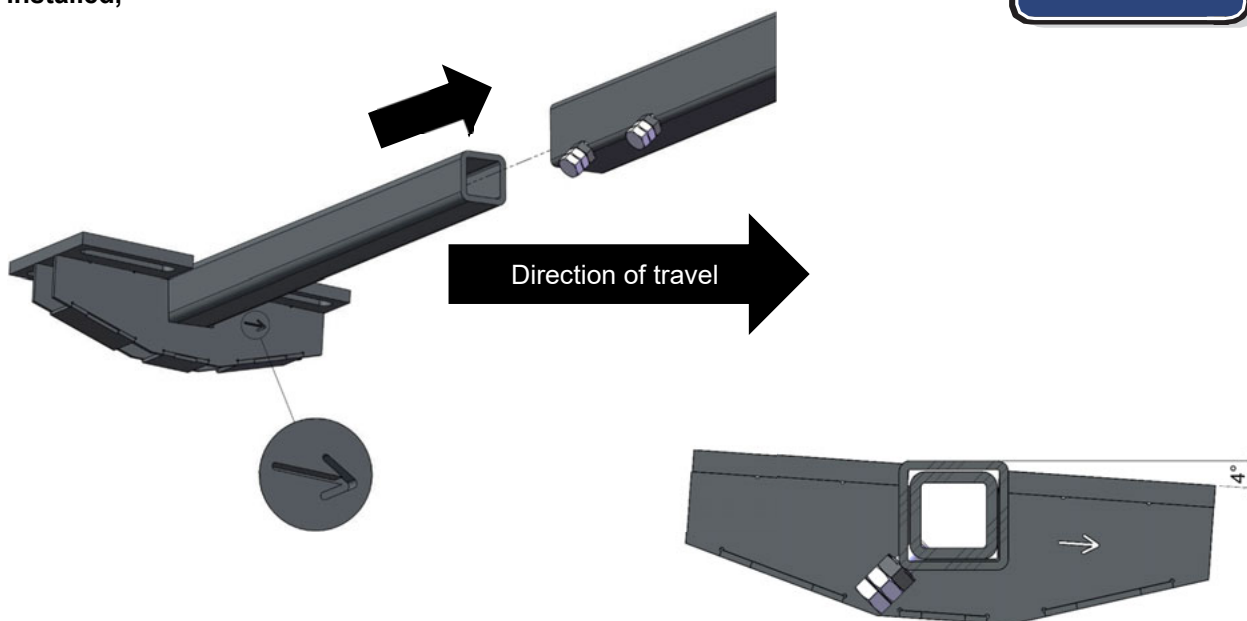
Slide the two brackets on to the right and left end of the assembled retaining bar.
The brackets must be arranged at a 4° angle in the direction of travel.
To identify the left / right bracket, use the arrow for orientation (see the comment below).

The left bracket is attached with two M10x30 hex bolts and M10 nuts as specified (see table on page 22).
The right bracket is attached but not bolted down yet.



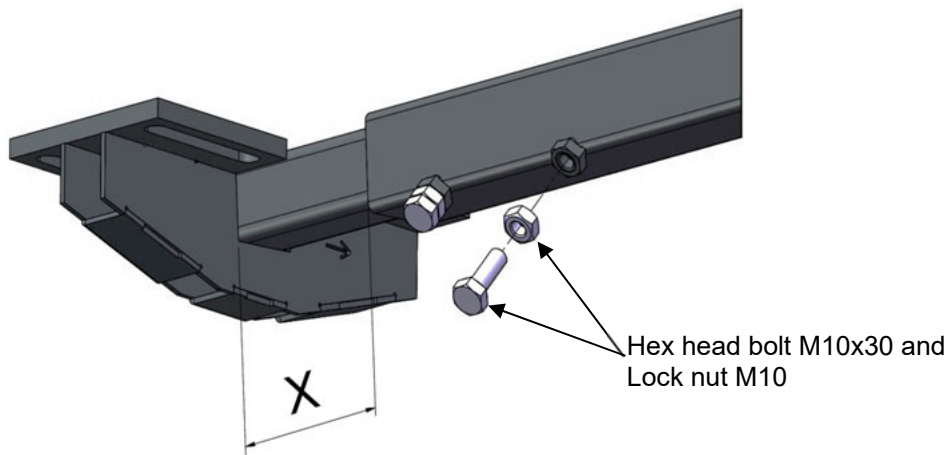
Note!

The arrows in the brackets are for orientation and must point in the direction of travel when correctly installed,



Assembly instructions

Mounting the brackets



Cutting width	622X / 722X	625X / 725X	630X / 730X	635X / 735X
"X" measure	119mm	119mm	119mm	35mm

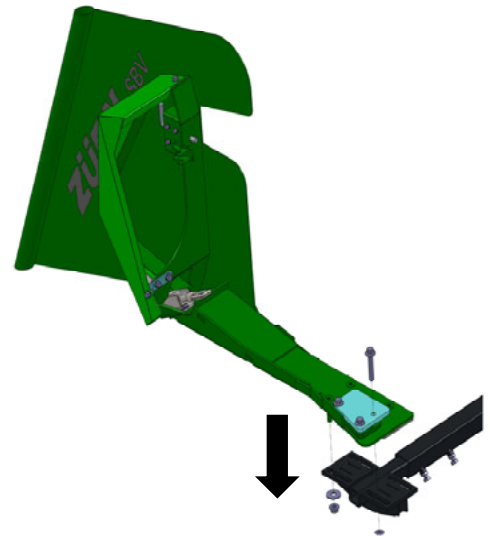
Assembly instructions

Attaching the side plates

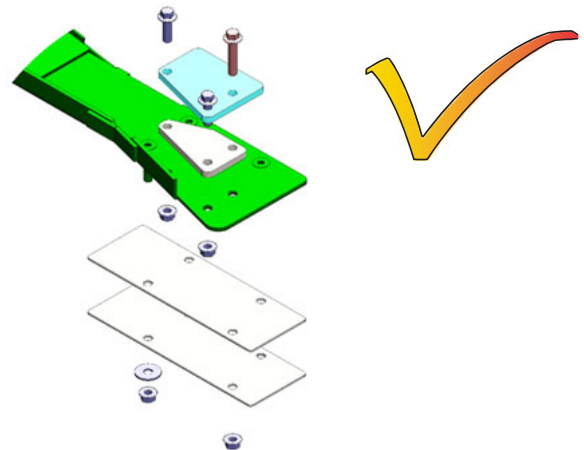
The side plates are mounted on the brackets.

To do this, insert the welded countersunk bolts on the side plates into the slotted holes. Then push them all the way to the front.

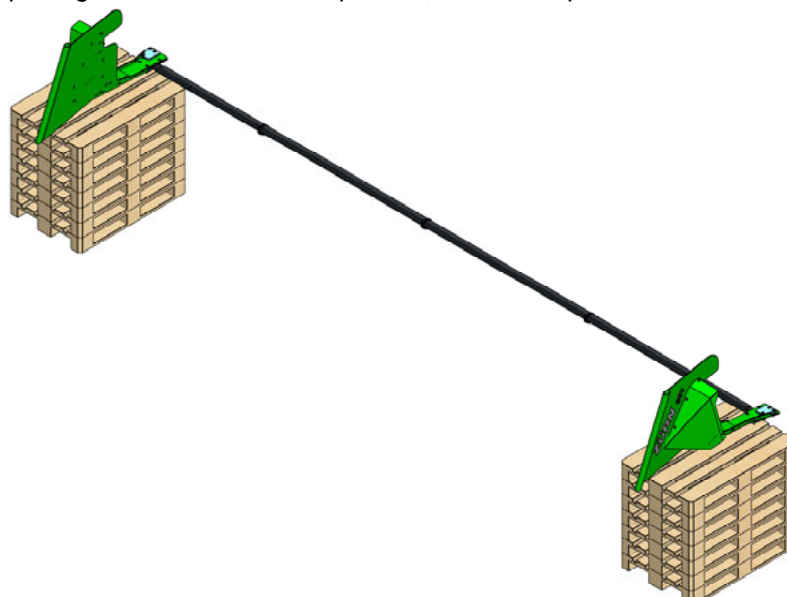
Then fit the washers and nuts without tightening them so you can still move the side plates.



Please note the structures of the spacer and clamping plates when attaching the side plates.



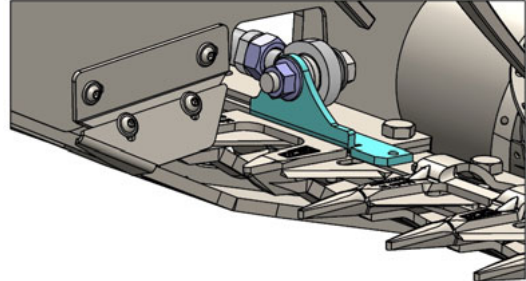
The assembled supporting bars, arms and side plates on stacks of pallets



Assembly instructions

Preparing the header for attaching the sunflower extension

Removing the side knife drive



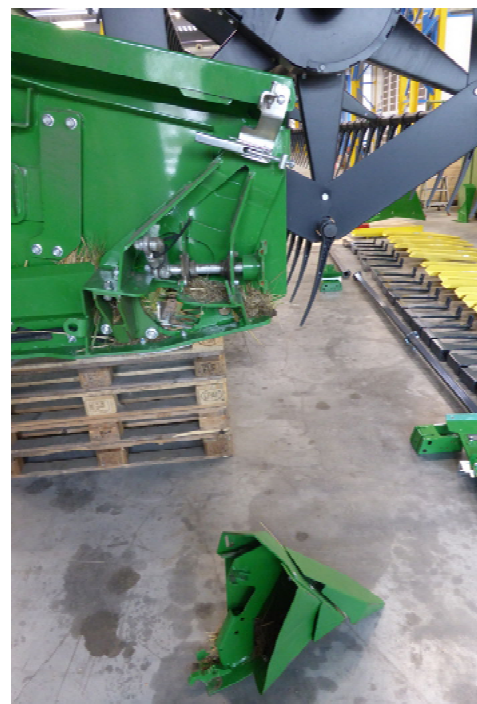
Disconnect the right knife drive from the knife drive angle and remove the drive angles from the knife.

Then refit the knife sections.



Remove the dividers or side knives

Remove the divider tips or side knives from the header.

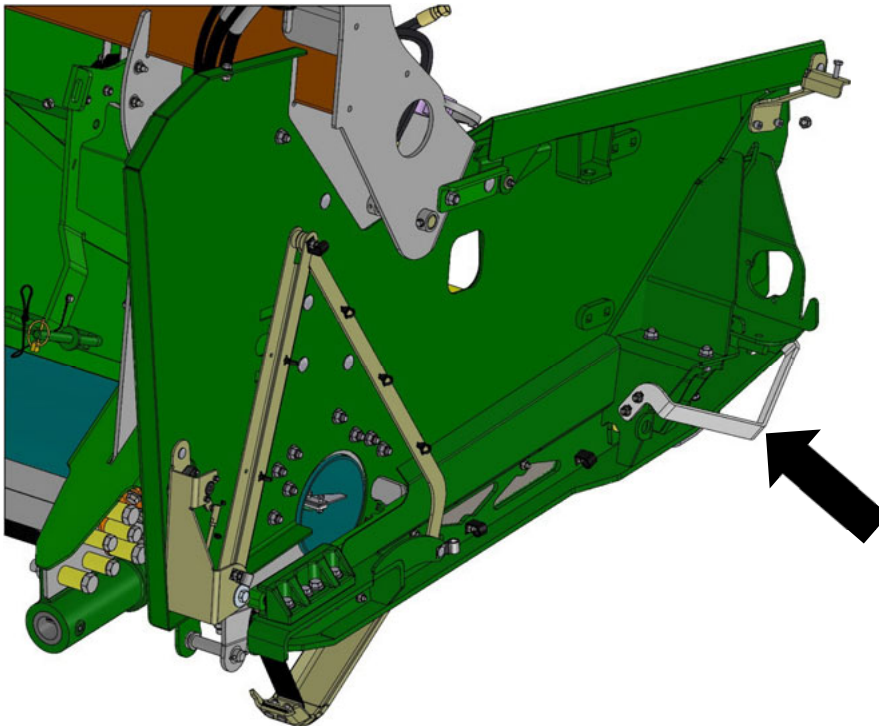
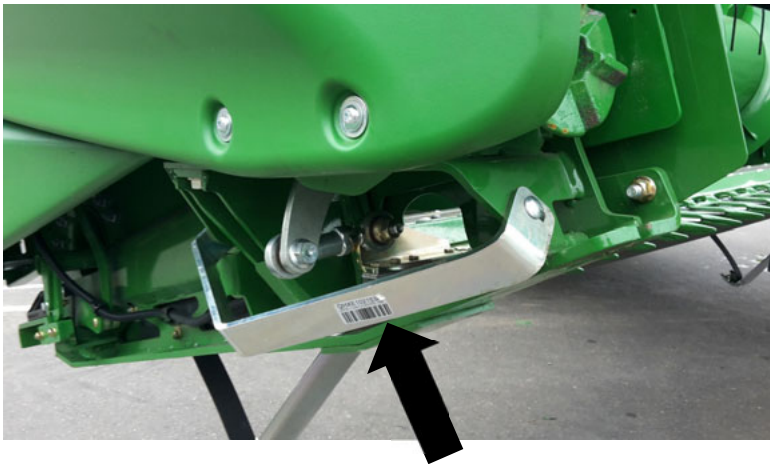


Assembly instructions

Preparing the header for attaching the sunflower extension

Removing the knife carrier guard

Remove the hoop that protects the knife carrier.



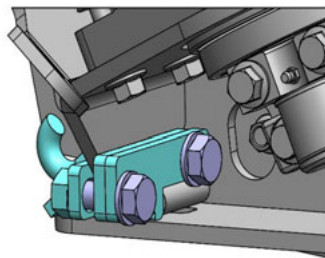
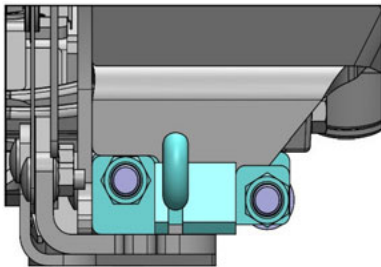
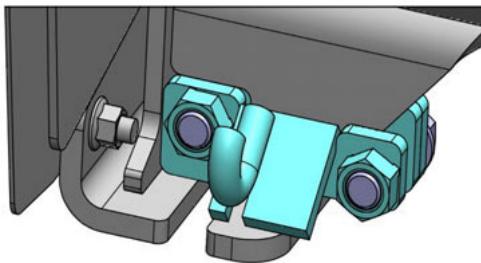
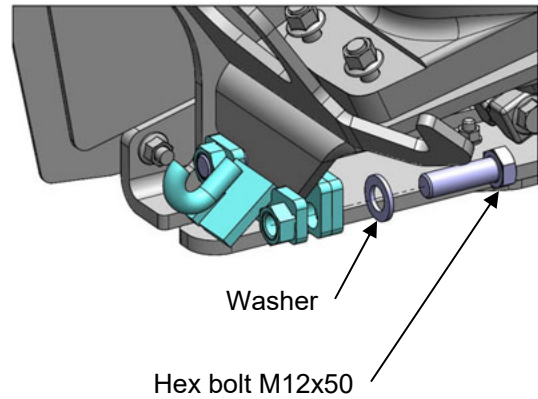
Assembly instructions

Preparing the header for attaching the sunflower extension

Installing the locks

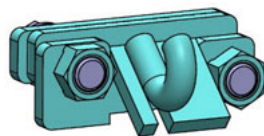
Attach the locks to the knife gearbox plate with two M12x50 hex bolts and the appropriate washers.

Do not tighten the screws yet. This allows the locking units to be adjusted.

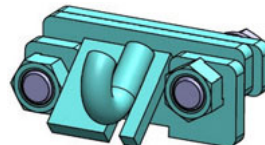


Note!

There is a separate locking unit for the left and right hand side. The hook of each locking unit must be positioned close to the header side.



Locking unit, left side



Locking unit, right side

Assembly instructions

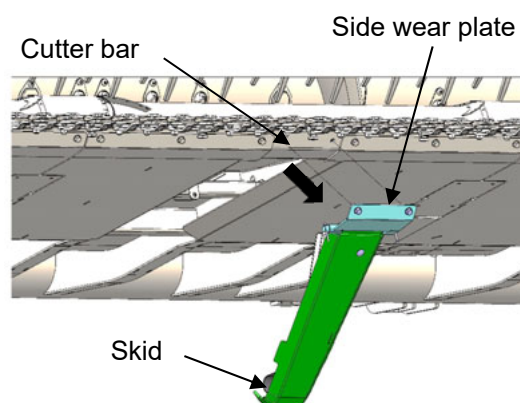
Preparing the header for attaching the sunflower extension

Attaching the central supports

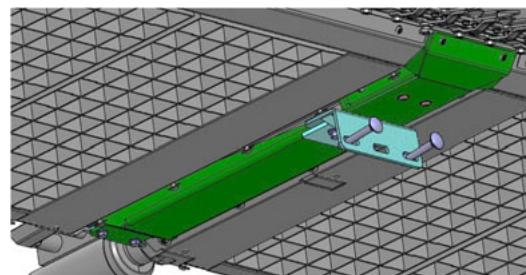
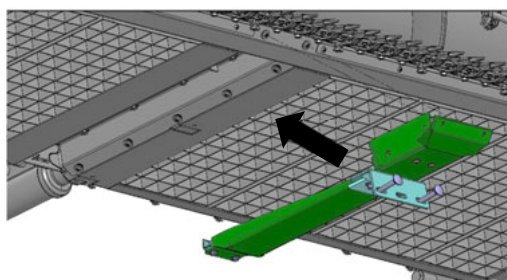
Secure the feeder house so it cannot drop. To do this, place the circlip around the ram that operates the feeder house.



Remove the front wear plate of the two middle wands by removing the two bolts in the knife bar and loosening the nut on the rear side of the wear plate (above the wands).



Insert the two supplied brackets for the center support, bolt them to the front of the knife bar. For this purpose, use the previously removed bolts of the header and the bolts included in the scope of delivery (see page 66).



The angle of the central support is freely movable in the slotted holes. The final position is determined and fixed with the assembly of the sunflower extension .

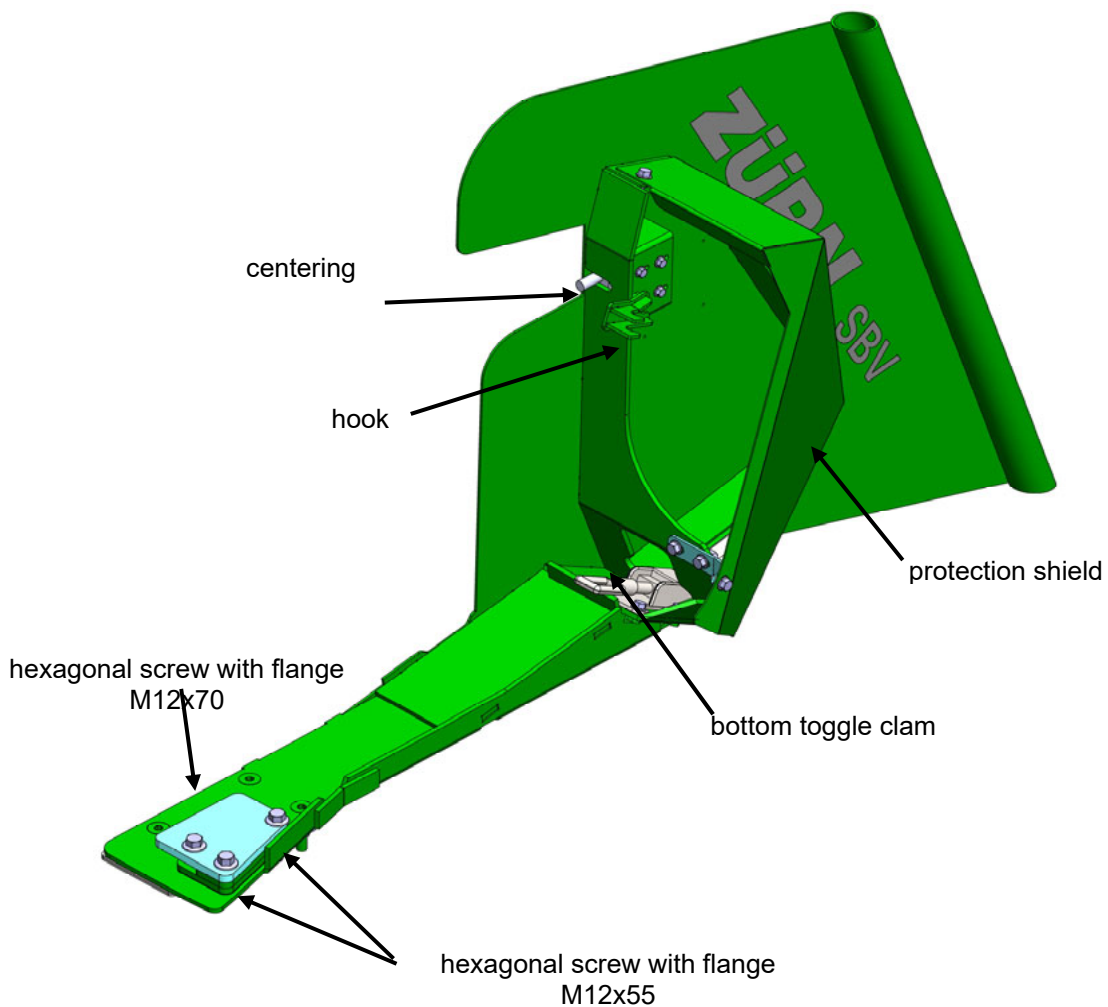


Aufbauanleitung

Attaching the sunflower extension to the header

Remove the circlip from the hydr. cylinder that operates the feeder house. Then drive the header into the side plates of the sunflower extension. In order for you to be able to safely retract the two attached side panels with the header, it may be necessary to support the front side parts with wood in order to adapt their position to the ground at the most favorable angle of the header for retraction.

John Deere 600X / 700X

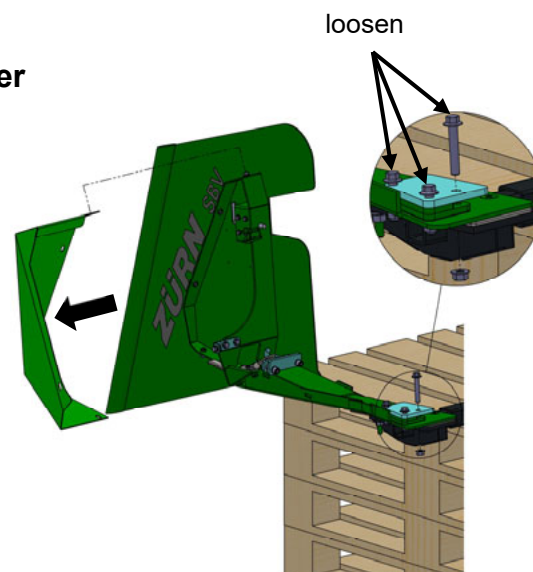


Aufbauanleitung

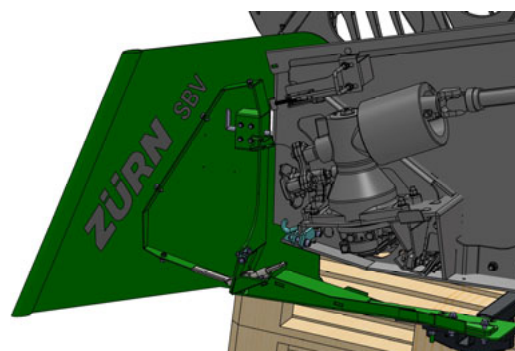
Attaching the sunflower extension to the header

Before you start mounting, you must loosen the three factory-installed cornering socket screw with flange so that the clamping blocks can be moved.

Now remove the protection shield of the side panel to enable barrier-free installation.



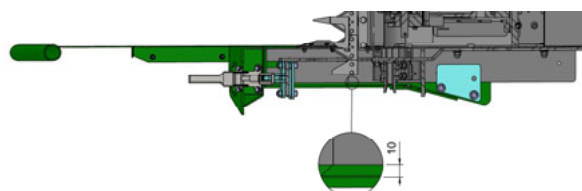
Now move the two side parts of the sunflower attachment relative to the side parts of the header according to the information on the laminated overall drawing, which is included with the sunflower attachment.



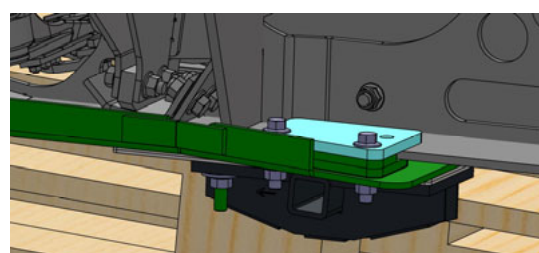
Start with the left side in the direction of travel. Slide the side panel of the sunflower attachment so far back until it is on the skid plate of the header's side panel.



Now create a parallel distance of 10 mm between the outer edge of the skid plate of the header's side panel and the lower vertical wall of the sunflower attachment side panel.



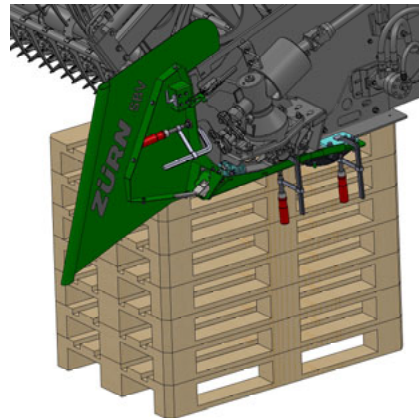
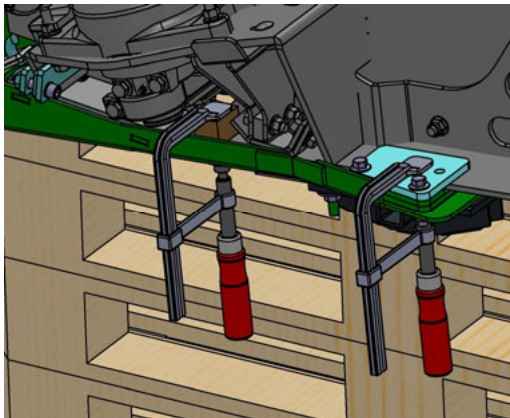
Slide the two spacer plates 40493 and 40494 into the space between the base plate of the sunflower attachment's side panel and the header and clamp these parts to the header using the clamp block 40494 and two hexagonal screws with flange M12x55.



Aufbauanleitung

Attaching the sunflower extension to the header

Do not close any quick-release fasteners yet, but clamp the sunflower attachment's side panel with the header by means of screw clamps. Pay attention to the adherence to the parallel distance of 8 mm listed above and to the concern of the sunflower attachment's side panel on the skid plate as described above.



Now close the lower quick-release fastener and align the locking unit centrally to it. Tighten the screws of the locking unit and adjust the preload of the quick release fastener appropriately.



lower quick release fastener

Close the upper quick release fastener and adjust its preload appropriately. Next, slide the centering lever forward. The screw clamps can now be removed.



upper quick release fastener

On the right side of the header, proceed with the right panel of the sunflower attachment in the same way as described above. Here too, the parallel distance between sunflower attachment's side panel and the bottom plate of the header is 10 mm. This value must also be adhered to on the right side.

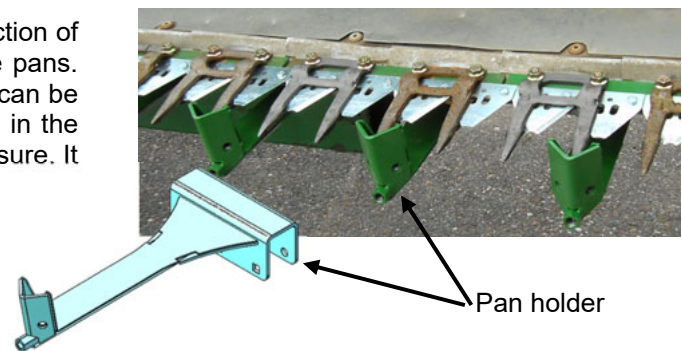
Assembly instructions

Fitting the pan holders

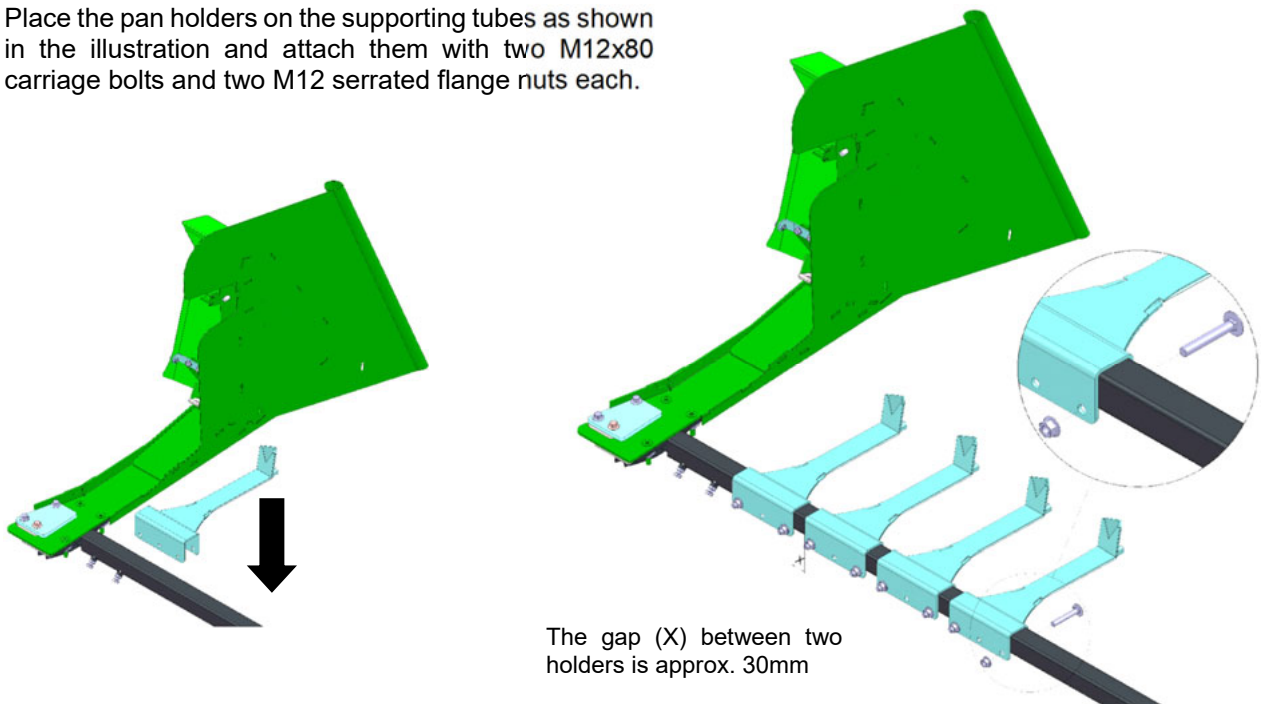
Raise the header to a comfortable height and prop the supporting tube in the middle. Secure the feeder house so it cannot drop. To do this, place the circlip around the ram that operates the feeder house.



To do so, position the supporting bar in the direction of travel so that the fingers do not collide with the pans. The position of the first pan holder from the left can be found in the laminated overall drawing included in the scope of delivery. Be sure to adhere to this measure. It is essential to comply with this standard



Place the pan holders on the supporting tubes as shown in the illustration and attach them with two M12x80 carriage bolts and two M12 serrated flange nuts each.



The gap (X) between two holders is approx. 30mm

Note!

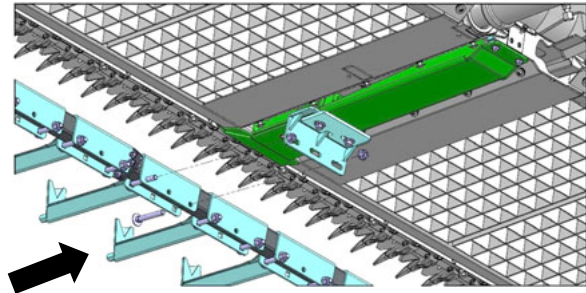
Do not yet tighten the serrated flange nuts on the pan holders



Assembly instructions

Attaching the sunflower extension

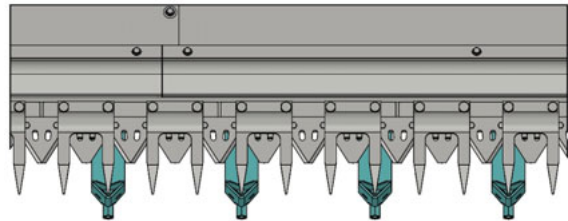
Next, push the supporting bar with the pan holders attached to it under the header. Push it as far as possible and align the pan holders in such a way that the guards contact the pan holder recesses in the middle. The distance must be approx. 5 mm. Contact should be avoided.



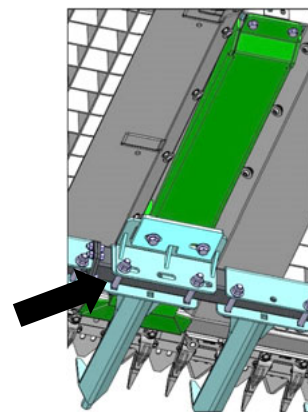
The front edges of the supporting arms are now flush with the supporting tubes of the side plates.

Next, clamp these with the M10x30 bolts

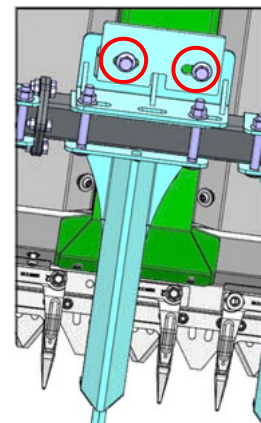
and the lock nut on both side plates and the right side of the retaining rod as previously described on page 21 for the left side of the retaining rod.



The angle, which is mounted on the central support so that it can move freely, is now pushed forward, aligned with the pan mount and attached to the pan mount using the two M12X90 carriage bolts and two M12 lock nuts supplied.



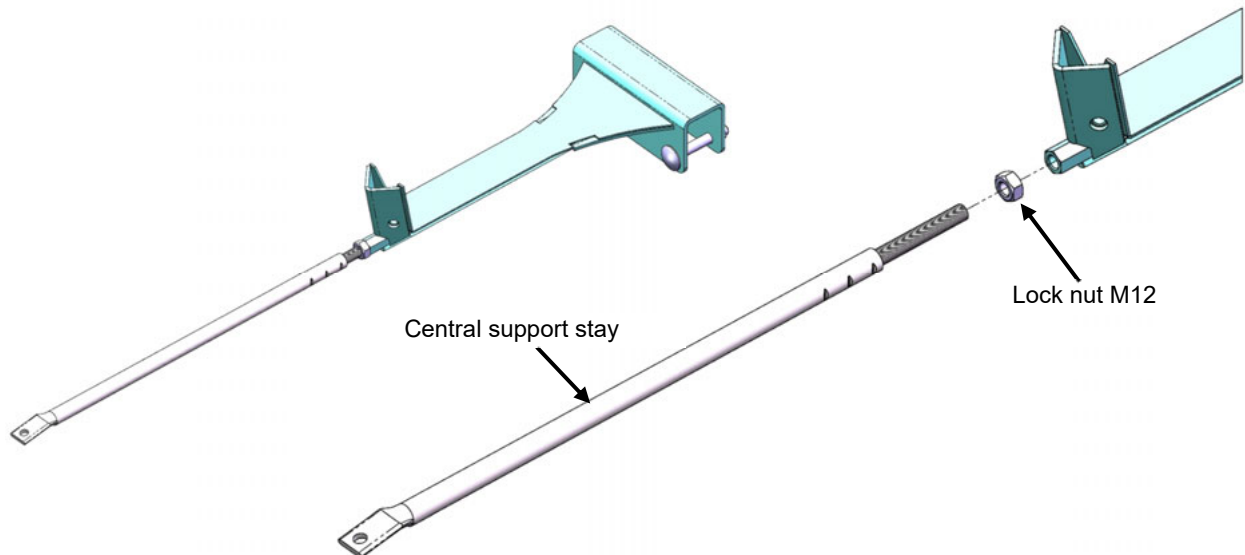
The angle is now attached to the central support using the installed M10x30 carriage bolts as mentioned on page 27.



Assembly instructions

Installing the central support

Attach the stays (*with the lock nut attached*) to the pan holders.

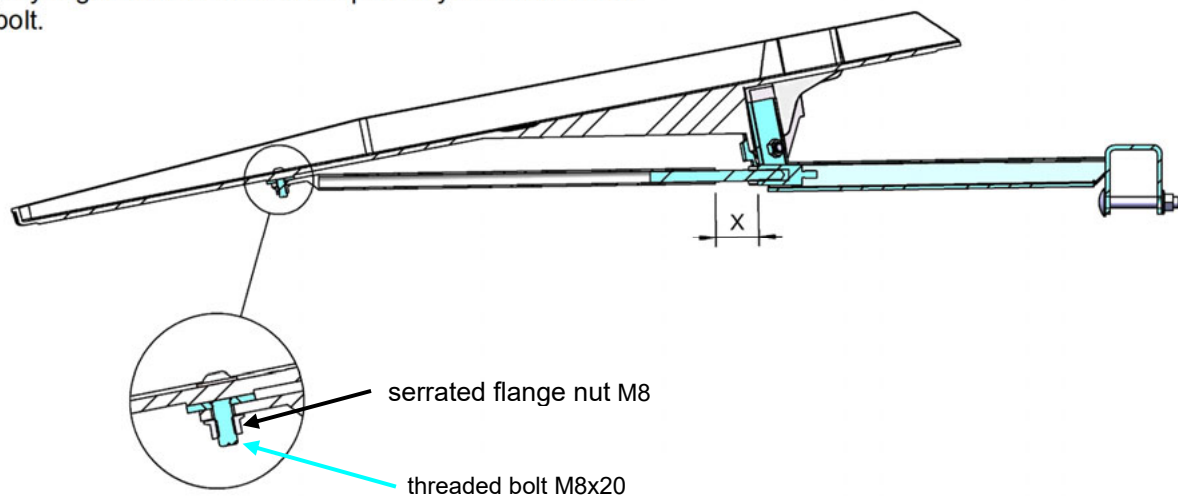


Note!

Do not tighten the M12 lock nut until the pans are fitted.



Test on one pan to see how deep the stay must be inserted into the pan holder ("X") before the hole in the stay aligns with the hole in the pan so you can insert the bolt.

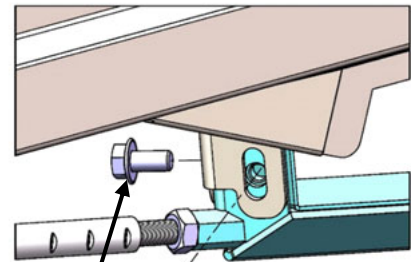
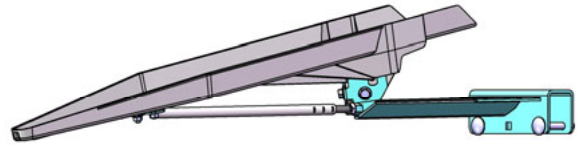


Assembly instructions

Mounting the central pans

The pans are attached to the pan holders with two M10x20mm serrated flange bolts. Adjust the height so that the guard shoes rest on the guards.

To increase the stiffness of the pans during the harvesting process, align them so that they are attached as far as possible to the front of the pan holder and have contact with the header's table at the back as far as possible over their entire width.

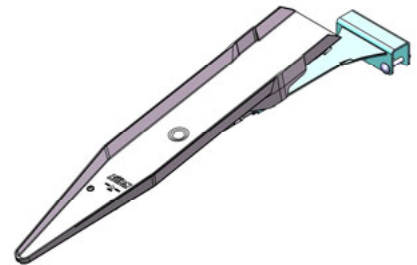


Serrated flange bolt
M10x20

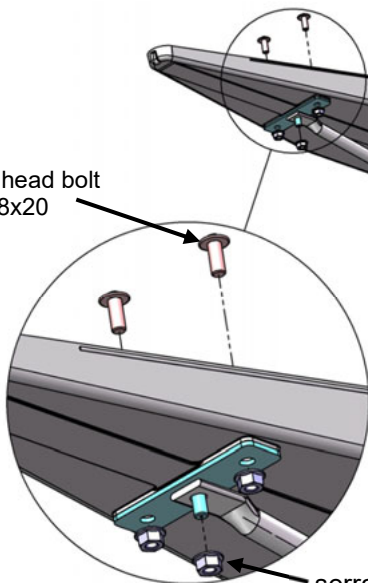
Make sure that the guards are completely covered by the integrated shoes of the pan holders and no guards are visible in the gaps between the pans



The central stay is attached to the tip with two M8x20 button head bolts and three M8 serrated flange nuts.



Button head bolt
M8x20



serrated flange nut M8

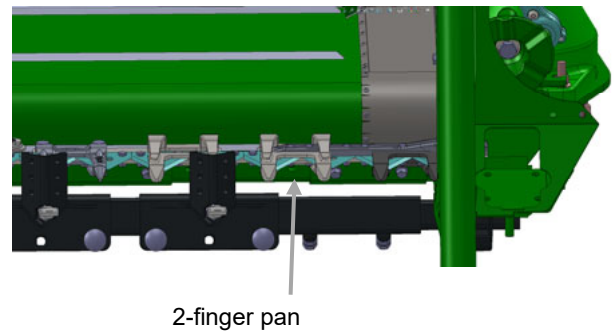
Assembly instructions

Before carrying out any subsequent work, make sure that the two side parts of the sunflower attachment are in correct contact with the tips of the side parts of the header

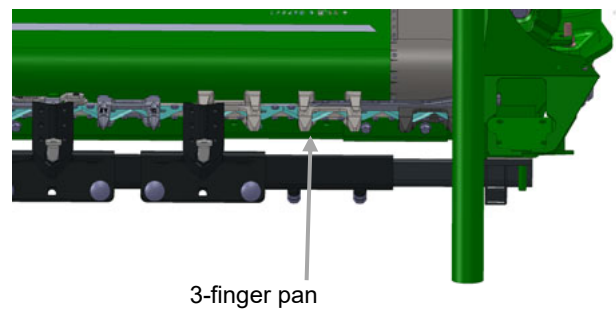
Start by attaching the central pans on the left side of the header. Be sure to pay attention to the distance between the supporting bar and the side part of the sunflower attachment as well as the distance between the supporting bar and the holder of the first center pan on the left side of the header. These dimensions are given on the laminated overall drawing of the sunflower extension.



Situation at 2-finger pan left hand side



Situation at 3-finger pan left hand side



Align the first pan holder according to the dimensions on the laminated drawing and slide the first central pan onto the fingers from the front.

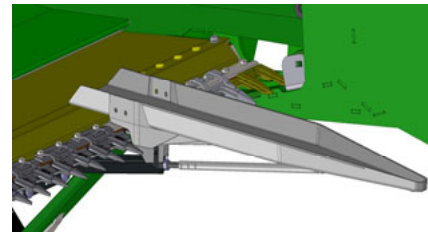
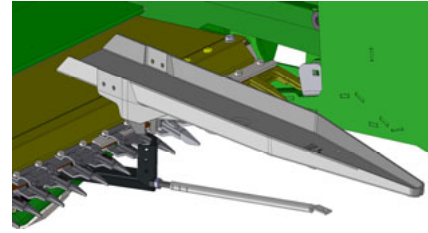


Assembly instructions

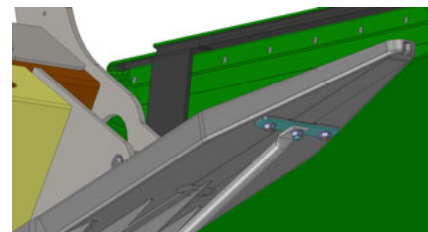
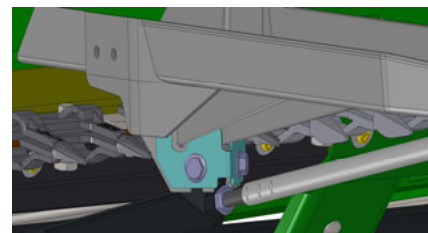
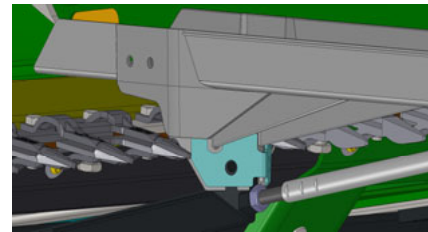
Since the John Deere headers of types 600X and 700X have stone dams of different heights, different positions of the central pans are set up in the vertical direction during the installation of the sunflower attachments.

Place the pans on the pan holders and push them down until the bottom side of the pan rests on the stone dam. Make sure that the pan is in contact with the stone dam along its entire width.

7



Install the clamping plate, adjust the central support stay to the position of the pan – the pan must lie firmly in the prism of the pan holder at the front and be in contact with the stone dam over its entire width at the rear – and tighten the screws and nuts. Make sure that the pan is in contact with the stone dam over its entire width even after tightening the screws.



Assembly instructions

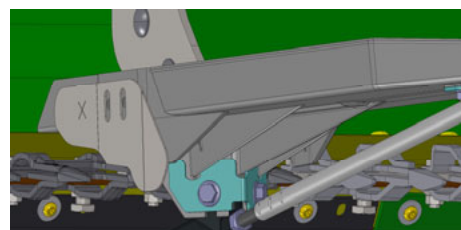
Due to the height of the stone dam, there is a free space in the rear area of the fingers between the underside of the pan and the tops of the fingers. This free space must be closed by the adjustable side cover plates supplied.

These side cover plates are designed specifically for the John Deere 600X and 700X header types and have an "X" shape as an identifier.

Before mounting, make sure that only cover plates - as shown in the following pictures - are included.



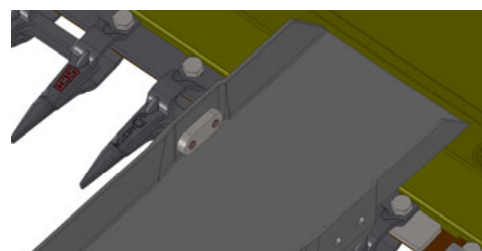
Attach the cover plate 41093 on the left and the cover plate 41091 on the right to the pan and secure both plates with screws 70031 (M8x16) and threaded plate 41077. Don't tighten the screws yet.



Adjust the two side cover plates in a vertical direction so that the free space up to the tops of the fingers is closed as completely as possible. Make sure that the knife blades do not collide with the side cover plates during the cutting movement.



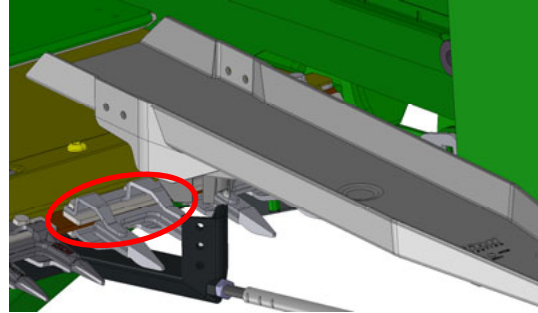
Tighten the screws after adjusting the side cover plates.



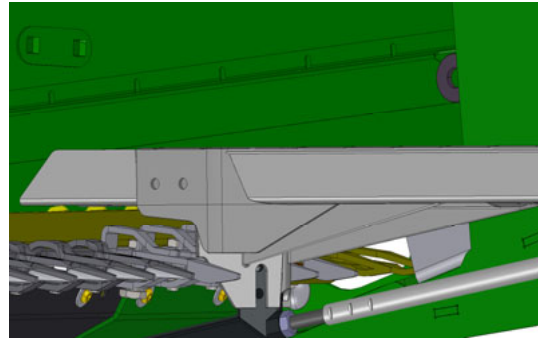
Assembly instructions

Attachment of the central pans in the area of the knife drive

In the area of the knife drive on the left side of the header, the fingers on their upper side have a different shape and a greater height than all other fingers in the cutting system. On the top of the stone dam sheet in the area of the knife drive of the John Deere header 700X there are also raised screw heads. These special features must be taken into account when attaching the central pans.



Place the pans on the pan holders and push them down until the bottom side of the pan rests on the stone dam. Make sure that the pan is in contact with the stone dam along its entire width.

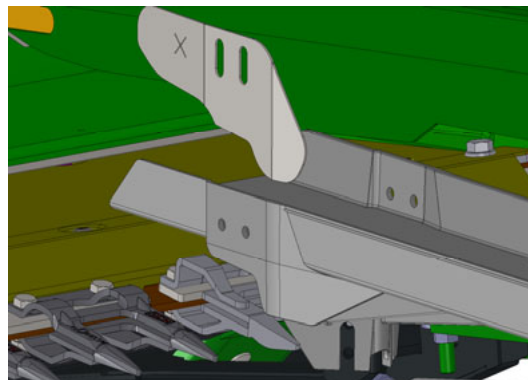


Install the central pan at this point in the same way as described above, always making sure that the pan rests on the stone dam plate or on the screw heads located on top of the stone dam plate.

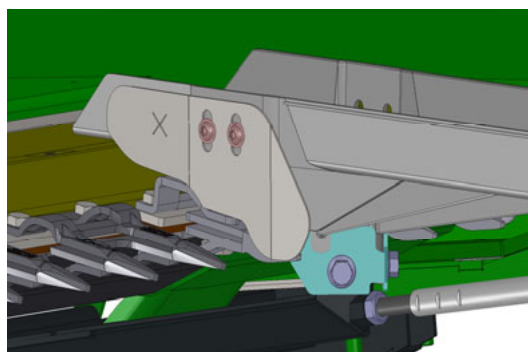
Assembly instructions

As with the other central pans, attach the cover plate 41093 on the left and the cover plate 41091 on the right to the pan and fasten both plates with screws 70031 (M8x16) and threaded plate 41077. Don't tighten the screws yet.

Adjust the two side cover plates in a vertical direction so that the free space up to the tops of the fingers is closed as completely as possible. Make sure that the knife blades do not collide with the side cover plates during the cutting movement.



Tighten the screws after adjusting the side cover plates.



If, however, parts of plants between the tops of the fingers and the cover plates become inserted during operation, become stuck and lead to blockages, the shape of these two lateral cover plates - especially in the area of the knife drive - can also be adapted to the position of the shuttle by grinding.



Assembly instructions

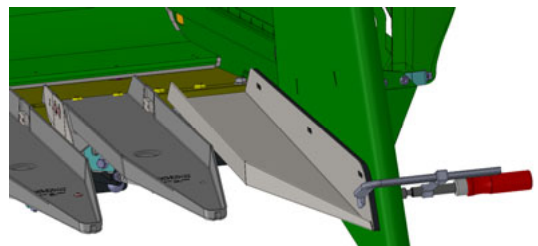
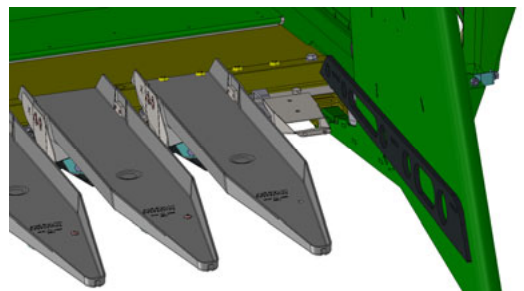
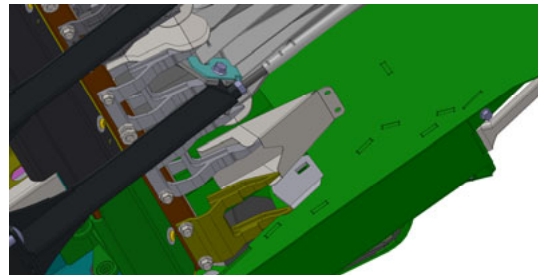
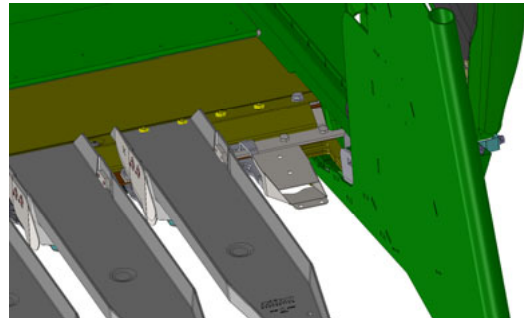
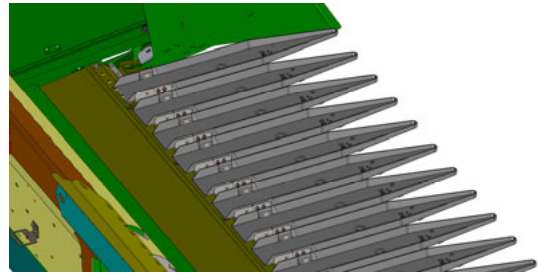
Attaching the outboard pans and aligning the side plates

Again, make sure that the two side plates of the sunflower attachment are correctly aligned with the tips of the side panels of the header.

Check again that the central pans are evenly aligned with each other in height.

From model year 2023, all sunflower attachments are equipped with adjustable finger covers under the outboard pans. To align the outboard pans, first put the finger cover on the outer fingers so that they are grasped by the finger cover on the side.

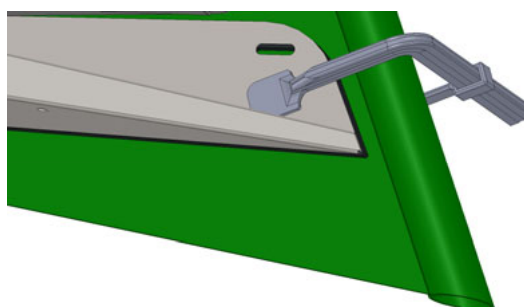
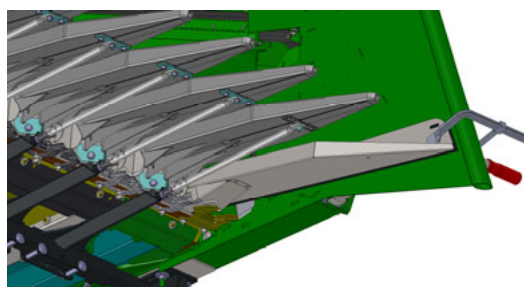
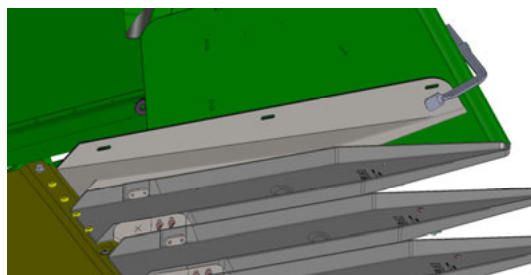
Next, place the outboard pan on top of the finger cover and fix the outboard pan to its front using a screw clamp on the side of the sunflower attachment. Before that, insert a spacer plate 40404 between each outboard pan and the side parts so that the outboard pans are fixed at a distance of 10 mm from the side panels.



Assembly instructions

Now place the two outboard pans in a suitable position relative to the plastic central pans, make sure that the fingers are still covered by the finger cover and that the outboard pans at the front do not collide with the guide scope on the side panel.

In order to securely grip and cover the fingers with the standardised finger covers, it will probably not be possible to adjust the outboard pans to the same height as the plastic central pans and not to congruent trailing edges. Therefore, look for the most suitable position of the outboard pans for your chosen setting of the plastic central pans and then drill the front and middle slotted holes of the outboard pans in the side part with a drill bit \varnothing 9 mm.

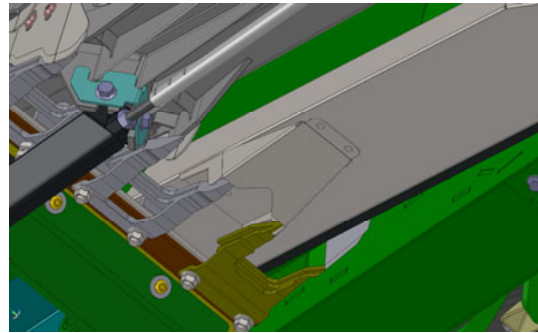


Be sure to mark the position of the outboard pans on the side plates, as the outboard pans will have to be dismantled again later.

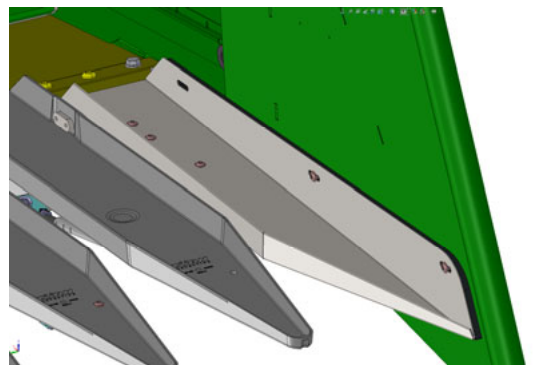
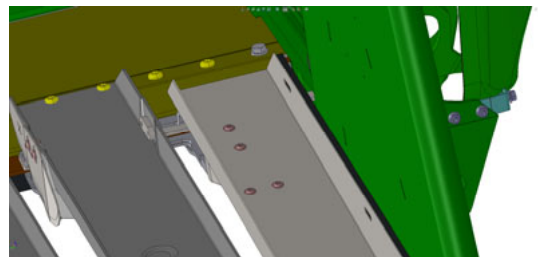
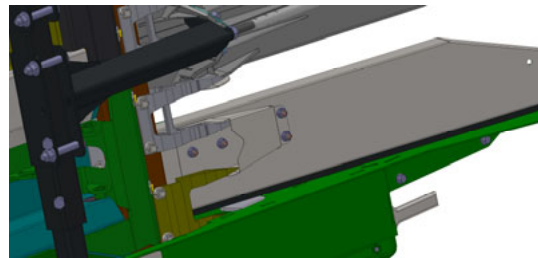
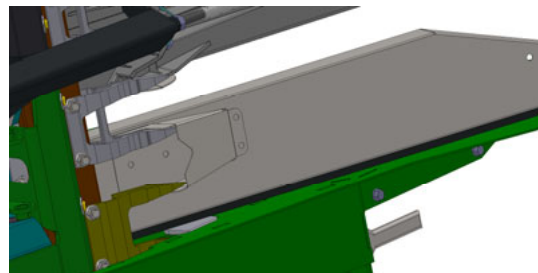


Assembly instructions

Draw the holes (there are 4 or 6 holes, depending on the size of the finger cover) of the finger cover on the outboard pans and dismantle the outboard pan. Now drill holes in the outboard pan at the marked points. The hole diameter should correspond to the one in the finger cover.



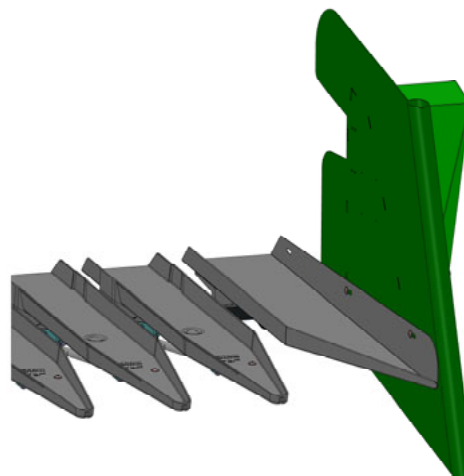
After drilling out the outboard pans, attach the finger covers to the outboard pans and reattach the outboard pans to the side plates according to the markings you have made. After aligning all these parts, tighten all fasteners.



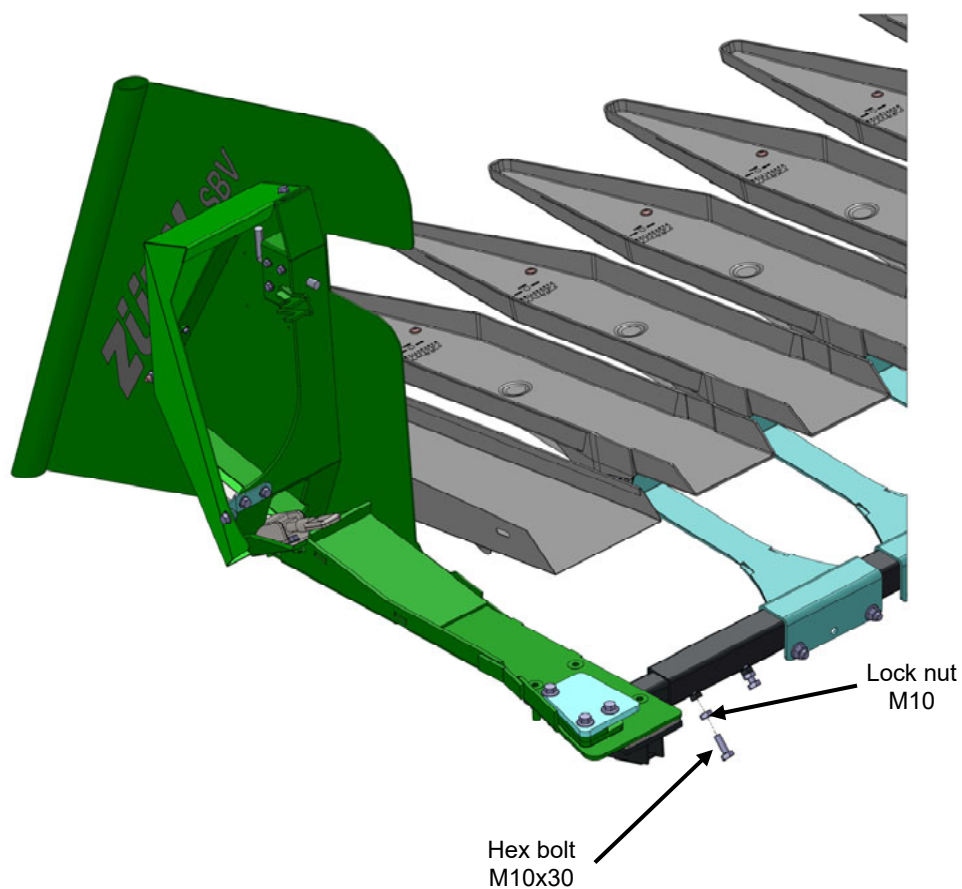
Assembly instructions

Attaching the side plates and the supporting arms

After aligning the side plates with the help of the pans, attach and secure all parts.



Then fix the supporting arms at both ends to the supporting bars (see page 20), using the M10x30 bolts and M10 lock nut also supplied.

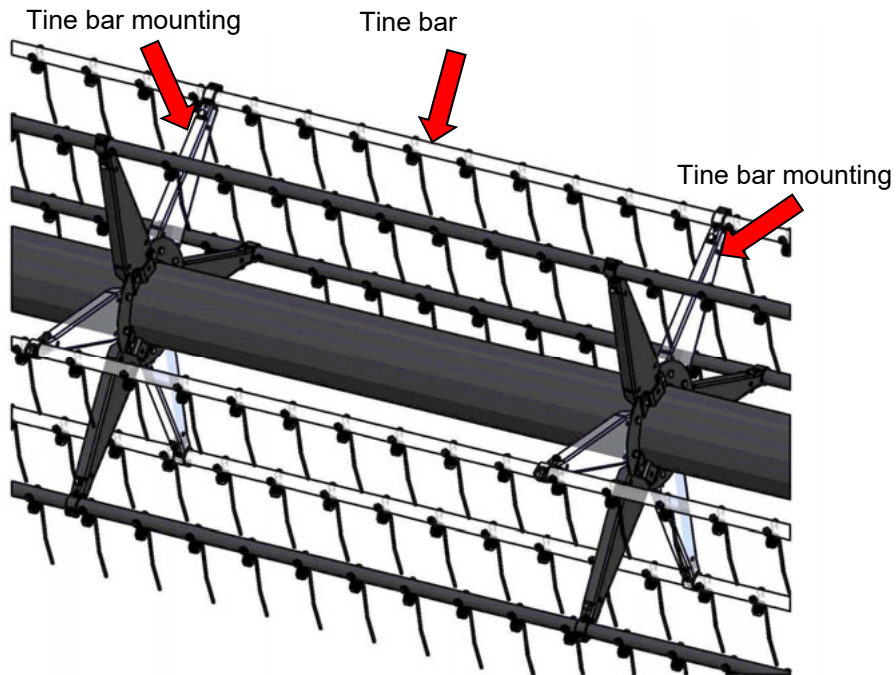


Assembly instructions

Installing the reel boards

Next, install the reel boards.

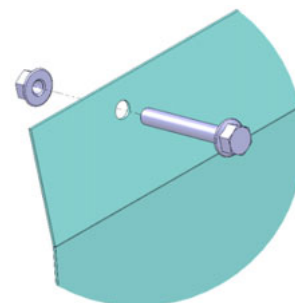
As a first step, remove three tine bars and their mountings from the reel.



Assembly instructions

Assembly of the reel boards on reels with steel tines

Remove the two outer tines in each tine section and mark the two holes on the reel board.



Drill the holes into the plates and fit the plates. Use the M8x55 flange bolt.

Proceed in the following order:

1. Flange bolt M8x55
2. Guard
3. Reel tube
4. Flange nut M8
5. Reel plate
6. Serrated flange nut M8.

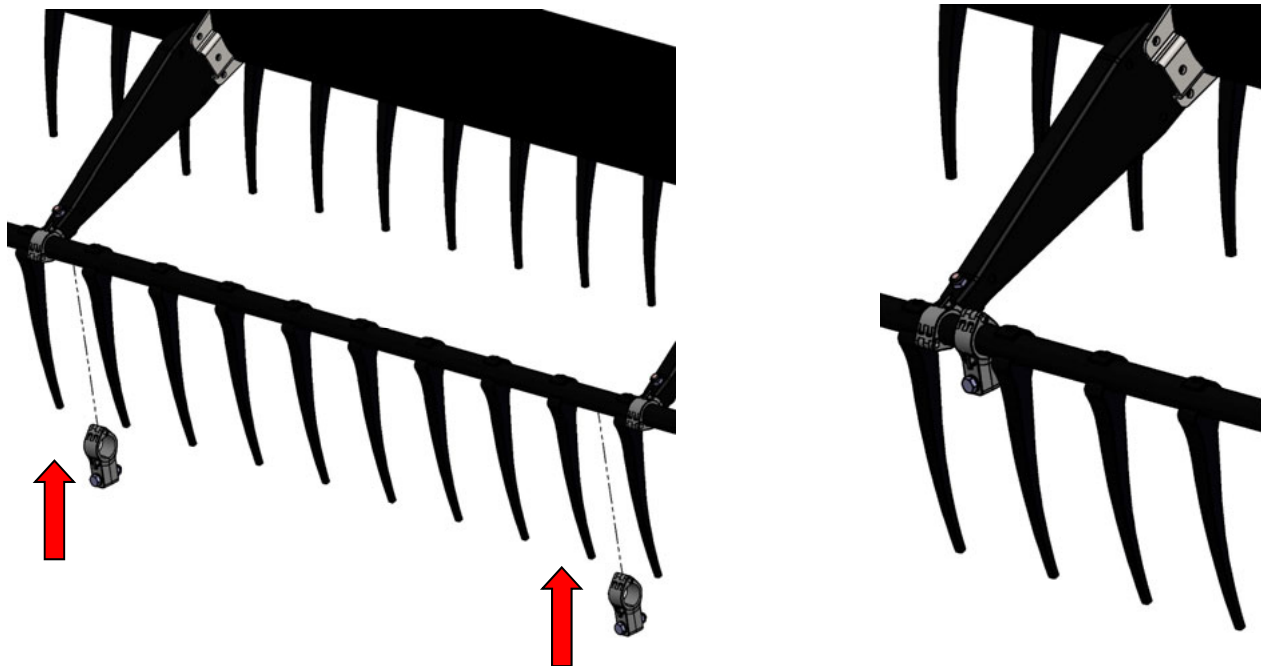
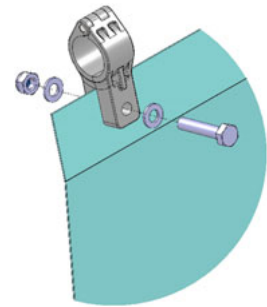


The bolts remain on the reel when the plates are removed from the reel.

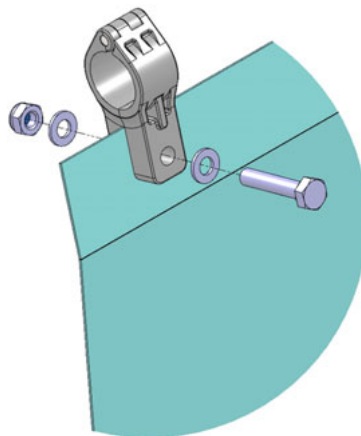
Assembly instructions

Mounting the reel boards to reels with plastic tines

Mount the brackets supplied to the tubes and mark the two holes on each plate.



Drill the holes into the plates and attach the plates.
Use the brackets and associated standard parts supplied for this purpose.



Assembly instructions

Installing the central support

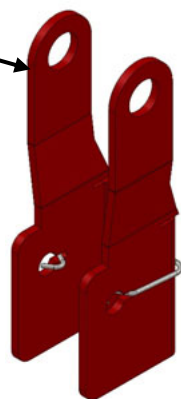
The two reel supports are mounted to the right and left side of the hydr. cylinders that raise the reel. The supports prevent the tines scratching on the header when the reel is in its lowest position.

As a first step, prop or suspend the left side of the reel (e.g. with a crane). This takes strain off the bolt that attaches the cylinder to the reel arm. Then remove this bolt.

Insert the left reel support, refit the bolt and cotter in place. Repeat on the right side of the reel. Attach the right reel support.



Reel support, left side



Reel support, right side



Attachment and removal of the assembled sunflower extension

Removing the extension from the header

Remove the threaded assembly from the central support and lower the header so that you can release the toggle clamps and reverse the header from the extension. Remove the reel boards and re-attach the tine bars to the reel.

Attaching the extension to the header

Place the sunflower extension on the ground and drive the combine, with the grain header attached, into the extension.



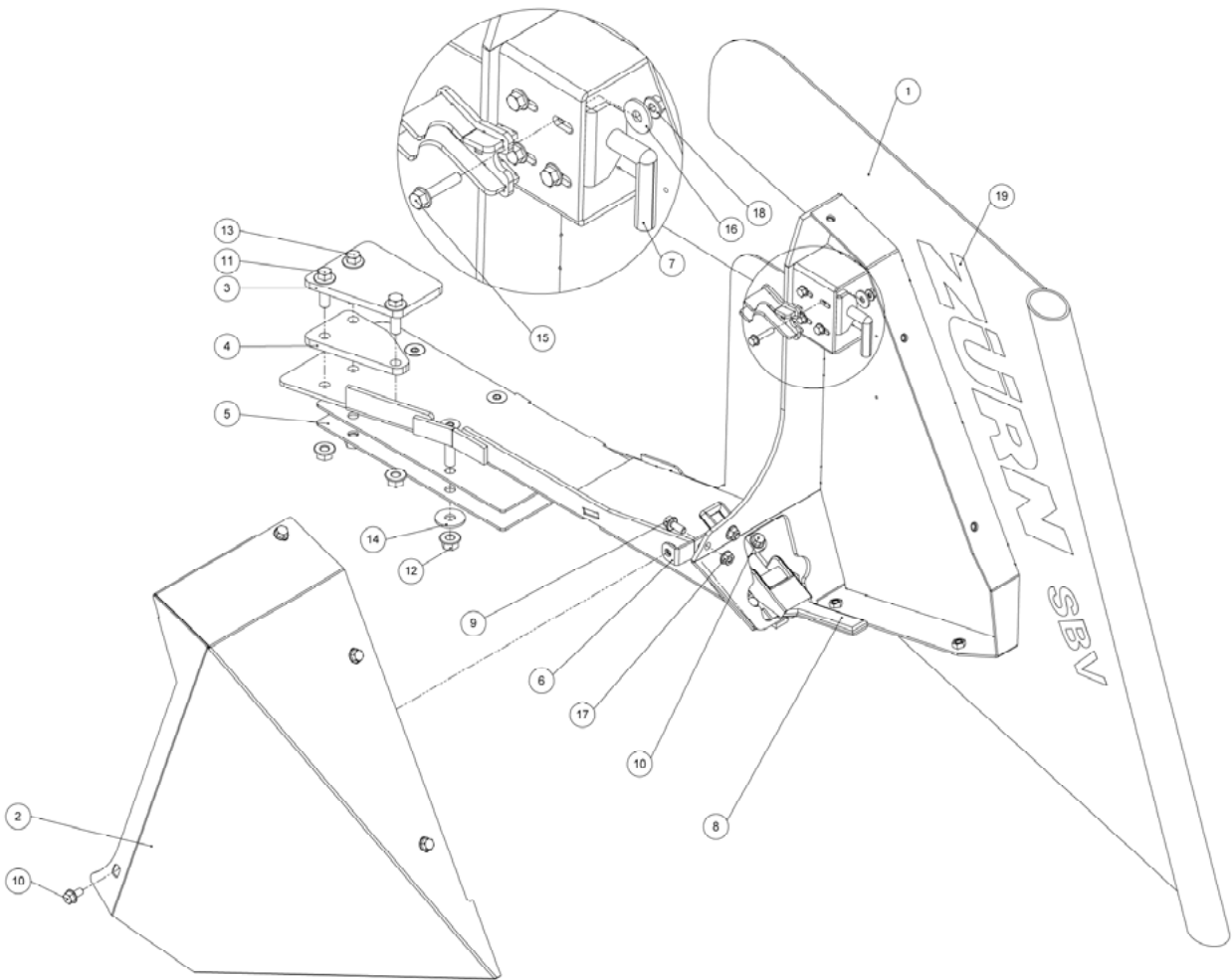
Make sure that both guard fingers are inserted in the pan!

Attach the extension to both side plates of the grain header by locking the toggle clamps. Then attach the central supports.

Next, fit the reel boards.

Parts list

Right side plates



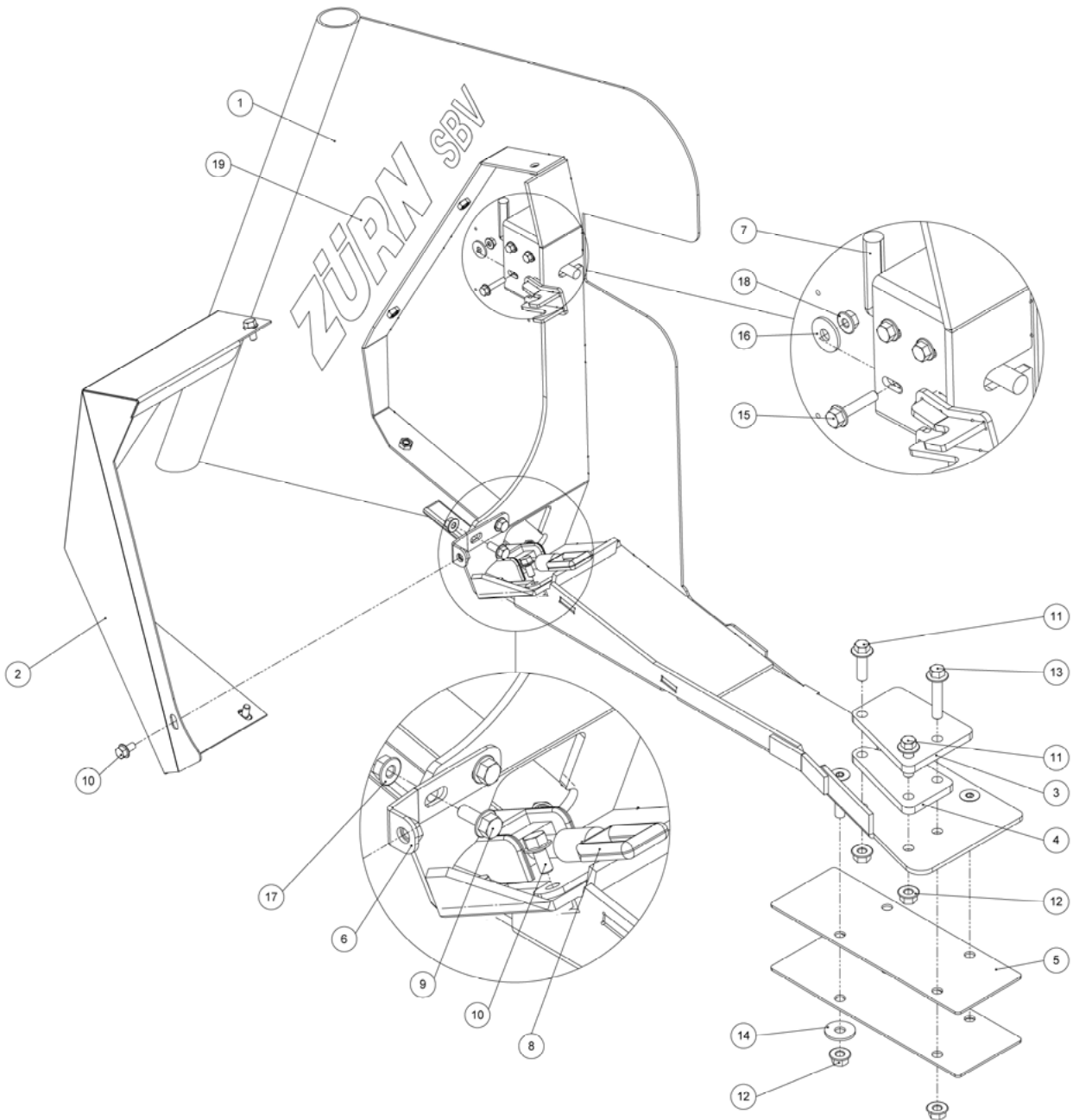
Parts list

Right side plates

Item	Quantity	Item no.	Designation	Description
1	1	40593	Right side plate	Welded assembly
2	1	40540	Right guard	
3	1		Top shim	See accessory pack page 62 - 63
4	1		Bottom shim	See accessory pack page 62 - 63
5	2	40567	Outboard bracket spacer	
6	1	40740	Guard mounting, left side	
7	1	25116	Spring bolt	
8	1	40562	Toggle clamp	
9	2	70044	Hex bolt with flange	DIN 6921 - M8x20
10	10	70043	Hex bolt with flange	DIN 6921 - M8x16
11	2		Serrated flange bolt	See accessory pack page 62 - 63
12	6	70012	Hex nut with flange	DIN 6923 - M12
13	1		Hex bolt with flange	See accessory pack page 62 - 63
14	3	70352	Washer	DIN 9021 - 12
15	4	091429	Hex bolt with flange	DIN 6921 - M6x30
16	16	097031	Washer	DIN 9021 - 7
17	2	70005	Hex nut with flange	DIN6923 - M8
18	4	70233	Hex nut with flange	DIN 6923 - M6
19	1	41056	Zürn SBV Decal	
1-19	1	40573	Side plate assembly, right side	Mounting assembly

Parts list

Left side plates



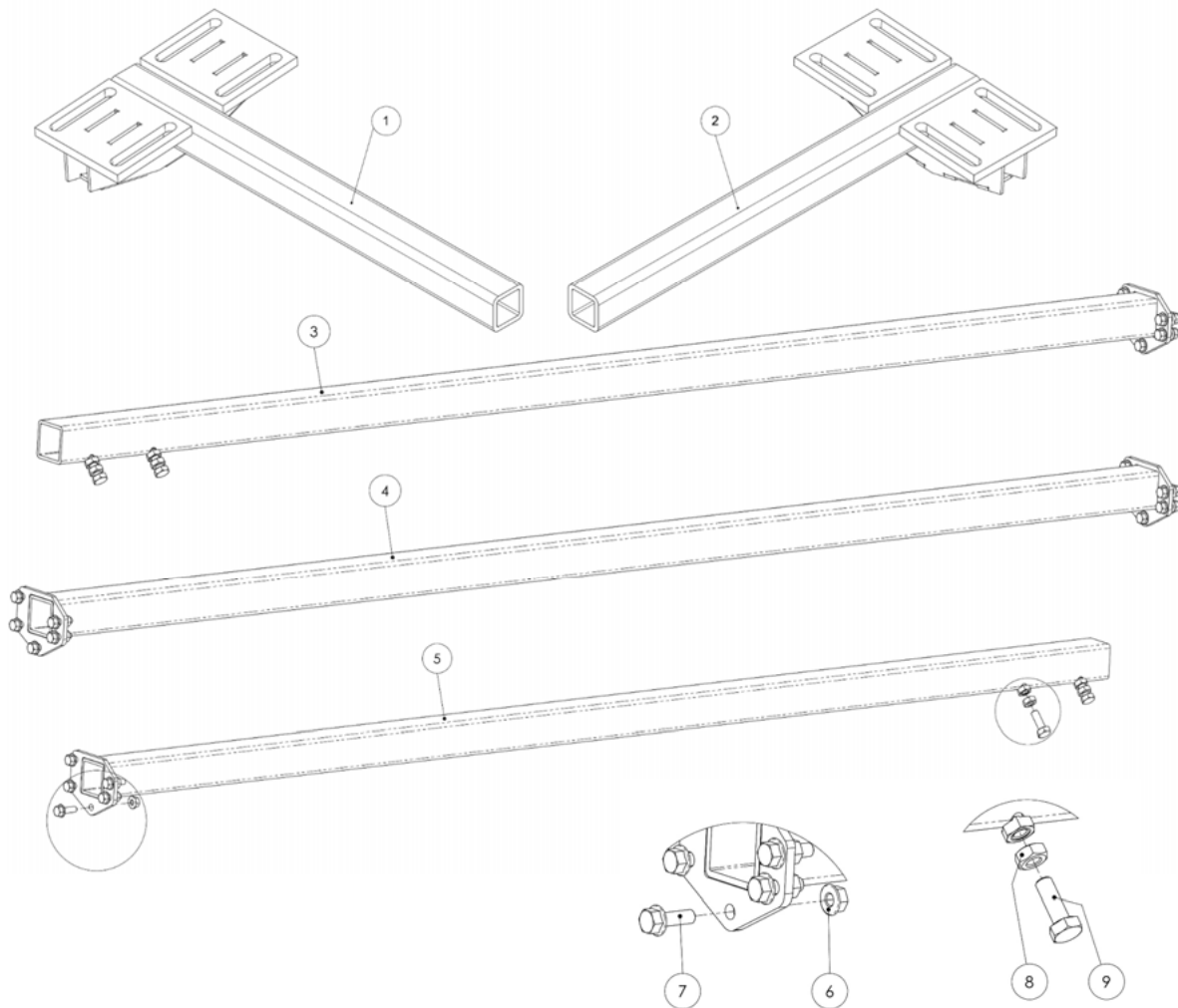
Parts list

Left side plates

Item	Quantity	Item no.	Designation	Description
1	1	40592	Left side plate	Welded assembly
2	1	40508	Left guard	
3	1		Top shim	See accessory pack page 62 - 63
4	1		Bottom shim	See accessory pack page 62 - 63
5	2	40567	Outboard bracket spacer	
6	1	40740	Guard mounting, left side	
7	1	25116	Spring bolt	
8	1	40562	Toggle clamp	
9	2	70044	Hex bolt with flange	DIN 6921 - M8x20
10	10	70043	Hex bolt with flange	DIN 6921 - M8x16
11	2		Serrated flange bolt	See accessory pack page 62 - 63
12	6	70012	Hex nut with flange	DIN 6923 - M12
13	1		Hex bolt with flange	See accessory pack page 62 - 63
14	3	70352	Washer	DIN 9021 - 12
15	4	091429	Hex bolt with flange	DIN 6921 - M6x30
16	16	097031	Washer	DIN 9021 - 7
17	2	70005	Hex nut with flange	DIN6923 - M8
18	4	70233	Hex nut with flange	DIN 6923 - M6
19	1	41056	Zürn SBV Decal	
1-19	1	40495	Side plate assembly, left side	Mounting assembly

Parts list

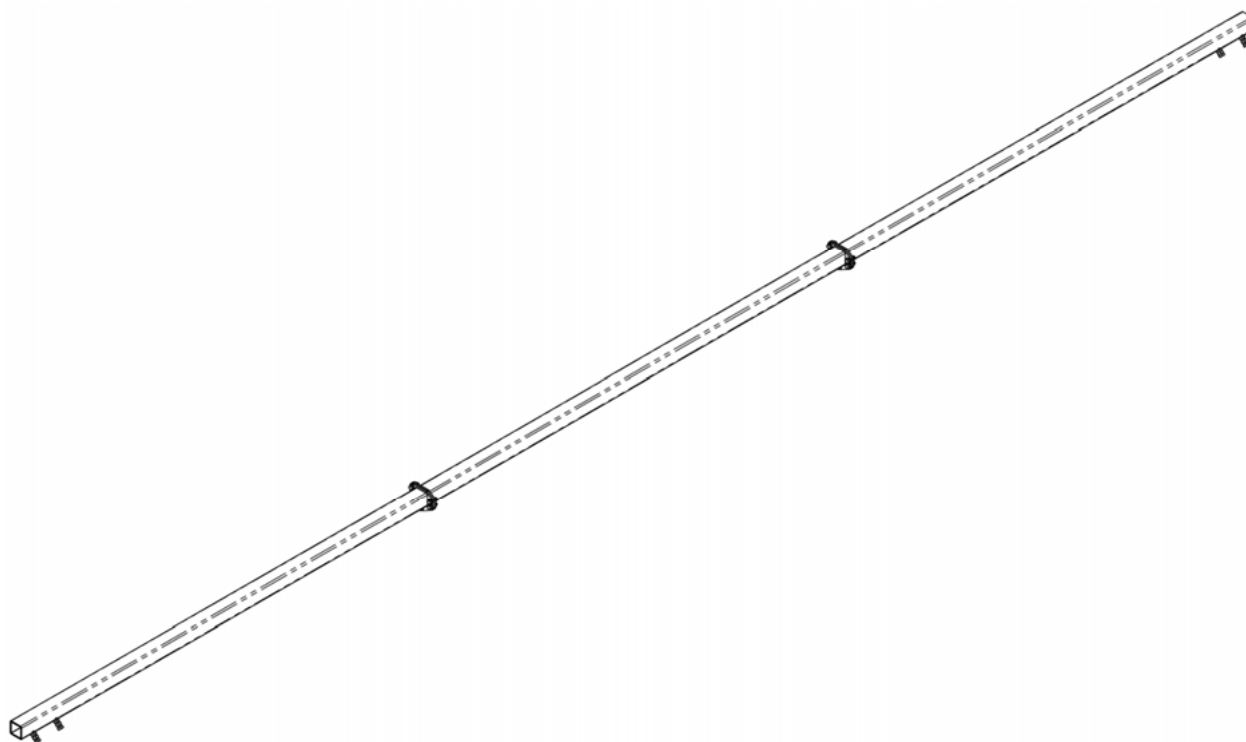
Supporting arms and bars



Item	Quantity	Item no.	Designation	Description
1	1	40528	Left side plate bracket	
2	1	40574	Right side plate bracket	
3	1	40019	Assembled supporting bar, left side	1780mm
4	AR	40018	Assembled supporting bar, central section	1828.8mm
5	1	40020	Assembled supporting bar, right side	1137mm
	1	40022	Assembled supporting bar, right side	223mm
	1	40023	Assembled supporting bar, right side	1517mm
	1	40030	Assembled supporting bar, right side	1780mm
6	AR	093230	Hex bolt with flange	DIN6921 M8x25
7	AR	70005	Hex nut with flange	DIN6923 M8
8	4	70015	Hex nut	DIN 934 M10
9	4	70061	Hex bolt	DIN 933 M10x30

Parts list

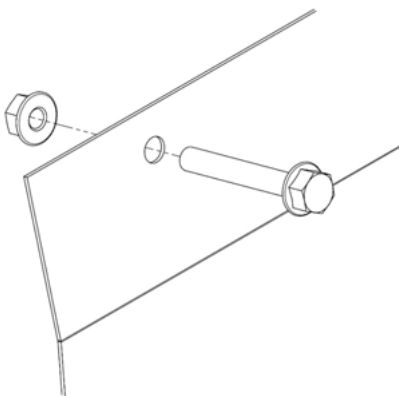
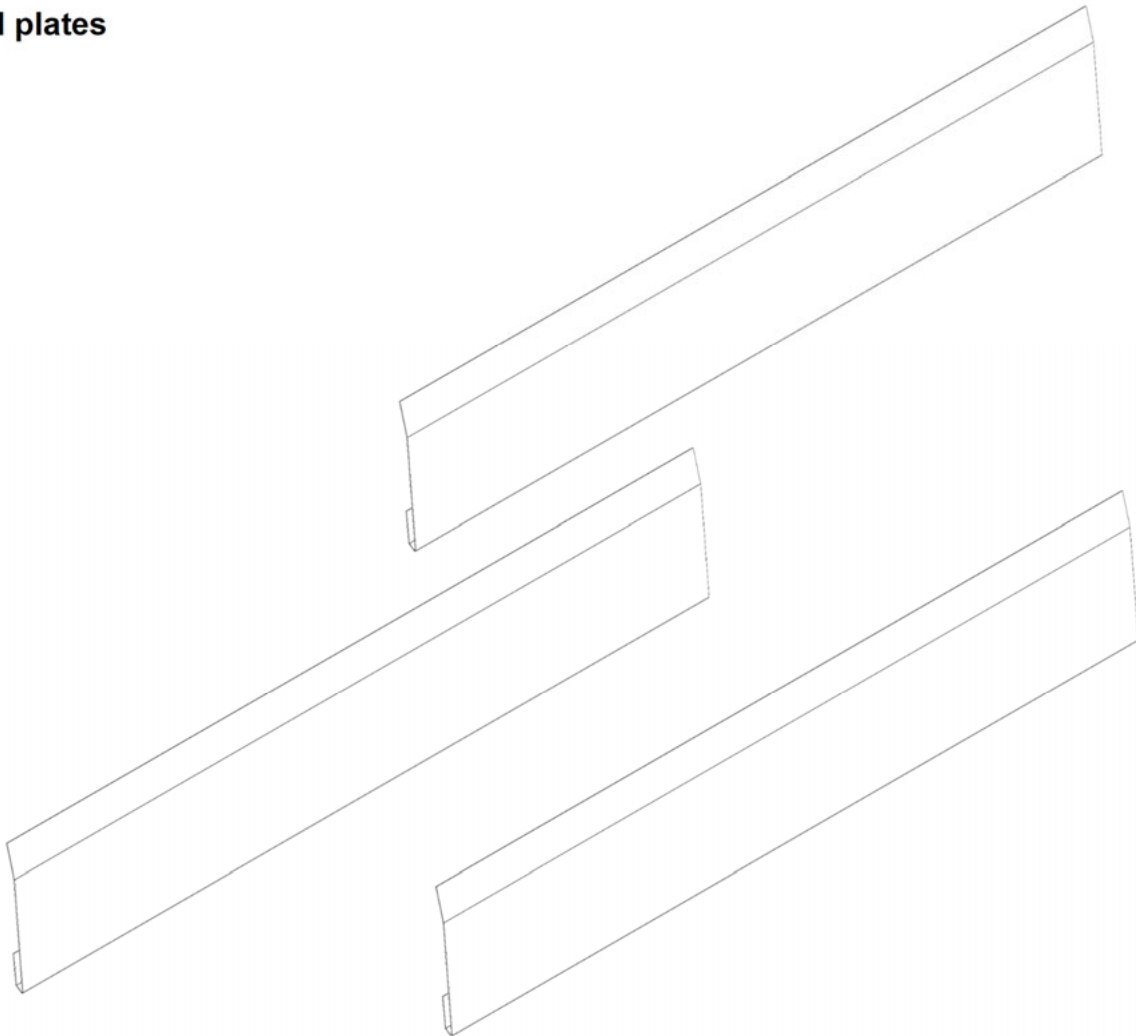
Supporting bars



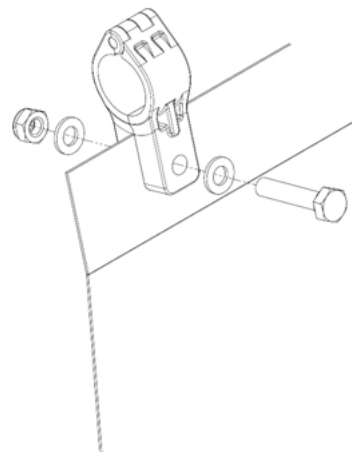
Type	Quantity	Item no.	Designation	Description
622X/722X 6.70m	1	40019	Assembled supporting bar, left side	
	2	40018	Assembled supporting bar, middle section	
	1	40020	Assembled supporting bar, right side	
	15	093230	Hex bolt with flange	DIN 6921 M8x25
	15	70005	Hex nut with flange	DIN 6923 M8
	625X/*725X 7.60m	1	40019	Assembled supporting bar, left side
3		40018	Assembled supporting bar, middle section	
1		40022	Assembled supporting bar, right side	
20		093230	Hex bolt with flange	DIN 6921 M8x25
20		70005	Hex nut with flange	DIN 6923 M8
630X/730X 9.15m		1	40019	Assembled supporting bar, left side
	3	40018	Assembled supporting bar, middle section	
	1	40030	Assembled supporting bar, right side	
	20	093230	Hex bolt with flange	DIN 6921 M8x25
	20	70005	Hex nut with flange	DIN 6923 M8
	635X/735X 10.50m	1	40019	Assembled supporting bar, left side
4		40018	Assembled supporting bar, middle section	
1		40023	Assembled supporting bar, right side	
25		093230	Hex bolt with flange	DIN 6921 M8x25
25		70005	Hex nut with flange	DIN 6923 M8

Parts list

Reel plates



Attachment system for
reels with
steel tines



Attachment system for
reels with

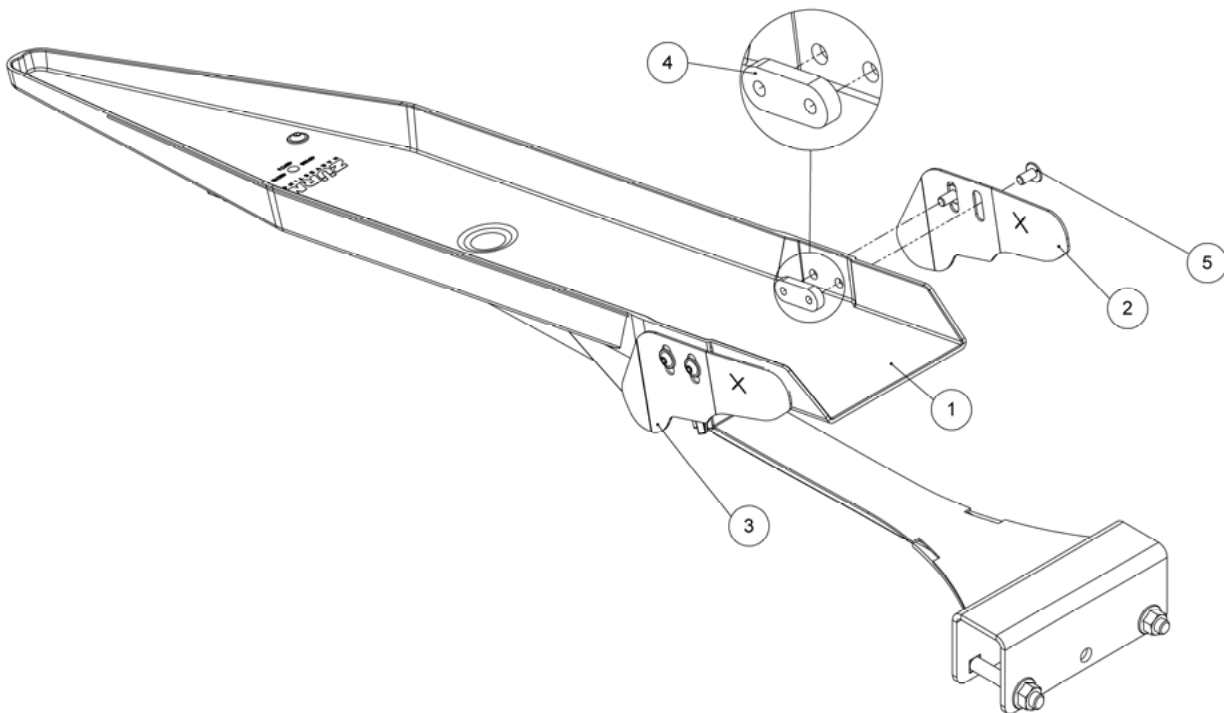
Parts list

Reel plates

Type	Header width	Item no.	Length	Quantity		
622X/ 722X	6.70m	40082	980mm	3		
		40083	1040mm	3		
		40075	1320mm	3		
		40080	1400mm	6		
		Fastener for reels with steel tines				
		093819	Hex bolt with flange DIN 6921 - M8x55		30	
		70005	Hex nut with flange DIN 6923 - M8		30	
		Fasteners for reels with plastic tines				
		AXE288032	Bracket		30	
		092020	Hex bolt DIN 933 - M10x50		30	
		70075	Washer DIN 125A - 10		60	
		70021	Hex nut DIN 985 - M10		30	
625X/ 725X	7.60m	40075	1320mm	3		
		40080	1400mm	6		
		40084	1450mm	6		
		Fastener for reels with steel tines				
		093819	Hex bolt with flange DIN 6921 - M8x55		30	
		70005	Hex nut with flange DIN 6923 - M8		30	
		Fasteners for reels with plastic tines				
		AXE288032	Bracket		30	
		092020	Hex bolt DIN 933 - M10x50		30	
		70075	Washer DIN 125A - 10		60	
		70021	Hex nut DIN 985 - M10		30	
		630X/ 735X	9.15m	40080	1400mm	12
40084	1450mm			6		
Fastener for reels with steel tines						
093819	Hex bolt with flange DIN 6921 - M8x55			36		
70005	Hex nut with flange DIN 6923 - M8			36		
Fasteners for reels with plastic tines						
AXE288032	Bracket			36		
092020	Hex bolt DIN 933 - M10x50			36		
70075	Washer DIN 125A - 10			72		
70021	Hex nut DIN 985 - M10			36		
635X/ 735X	10.50m			40126	1475mm	15
				40127	1290mm	6
		Fastener for reels with steel tines				
		093819	Hex bolt with flange DIN 6921 - M8x55		42	
		70005	Hex nut with flange DIN 6923 - M8		42	
		Fasteners for reels with plastic tines				
		AXE288032	Bracket		42	
		092020	Hex bolt DIN 933 - M10x50		42	
		70075	Washer DIN 125A - 10		84	
		70021	Hex nut DIN 985 - M10		42	

Parts list

Plastic pans - 600X / 700X

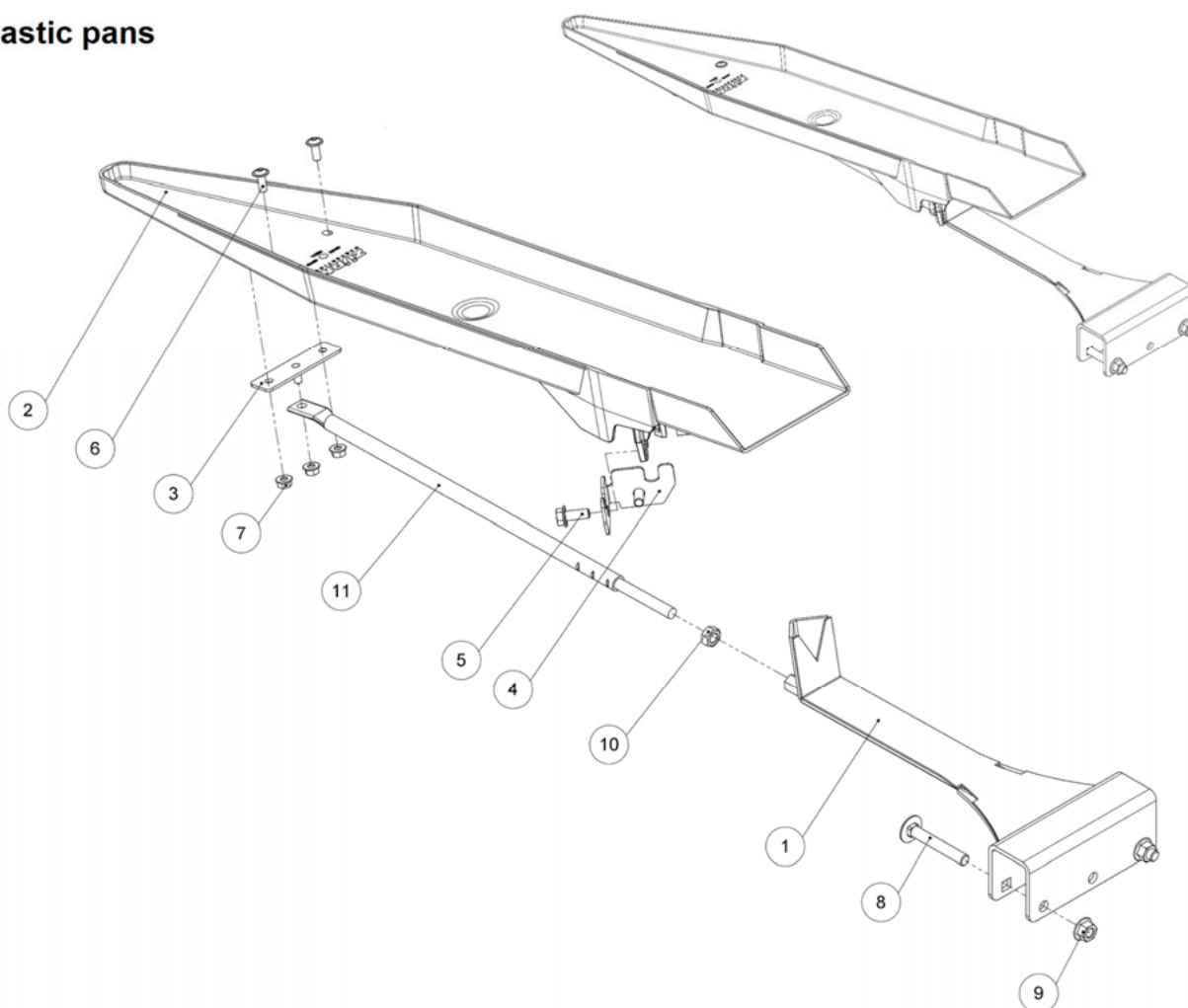


Item	Quantity	Item no.	Designation	Description
1	1	40480	Central plastic pan assembly - universal	See page 59
2	1	41091	Cover plate pan right side	John Deere 600X + 700X
3	1	41093	Cover plate pan left side	John Deere 600X + 700X
4	2	41077	Plate with threaded holes	
5	4	70031	Countersunk hex button head bolt	ISO 7380-2 – M8x16

Item	Item no.	22 ft	25 ft	30 ft	35 ft
1-11	40480	27	31	38	45

Parts list

Plastic pans

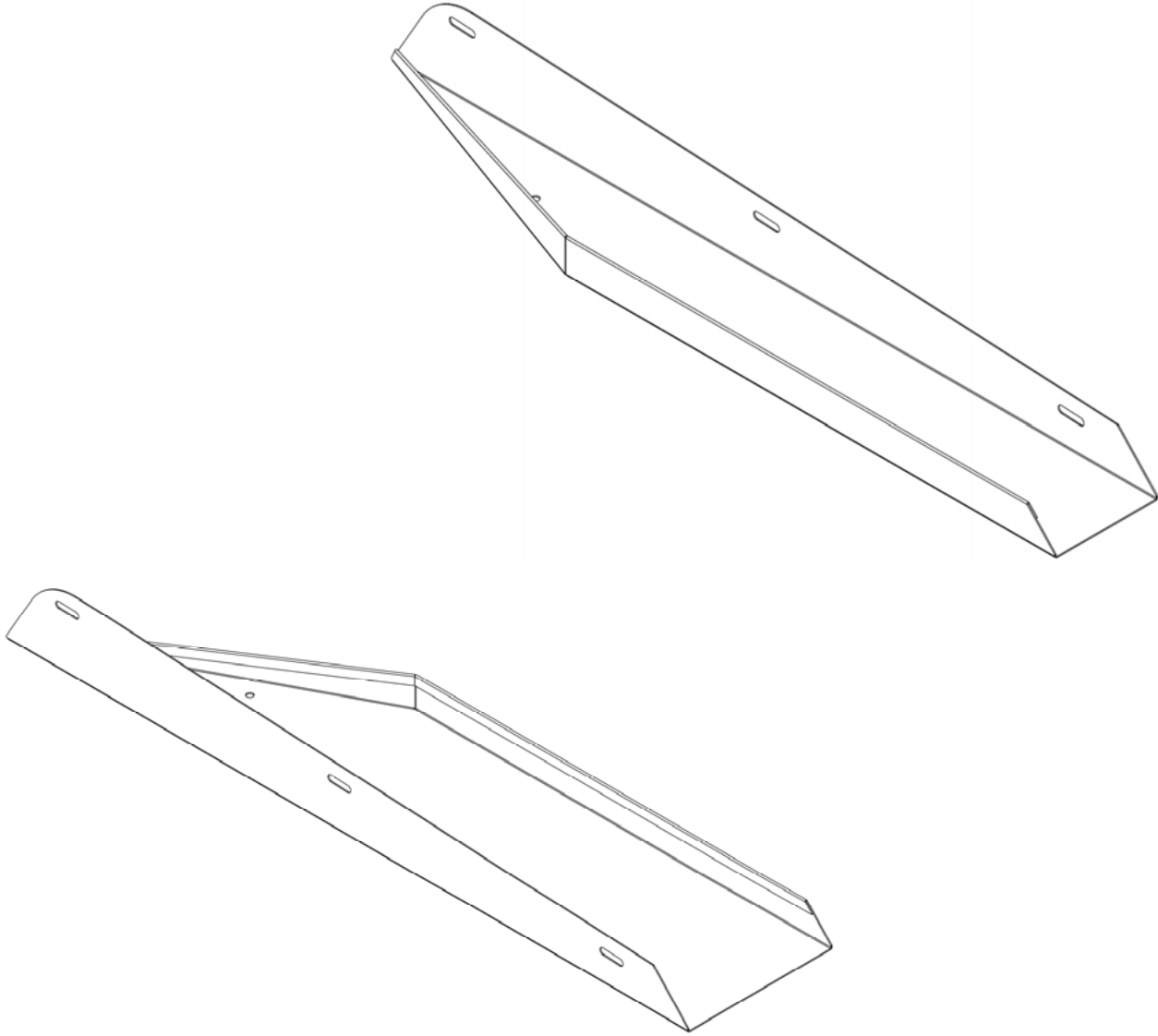


Item	Quantity	Item no.	Designation	Description
1	1	40004	Pan holder assembly	
2	1	40482	Plastic pan	
3	1	40199	Central pan brace	
4	1	40239	Plastic pan attachment plate	
5	2	093223	Hex bolt with flange	DIN 6921 M10x25
6	2	70033	Countersunk hex button head bolt	ISO 7380-2 M8x20
7	3	70005	Hex nut with flange	DIN 6923 M8
8	2	70199	Carriage bolt	Similar to DIN 603 M12x80
9	2	70012	Hex nut with flange	DIN 6923 M12
10	1	091664	Hex nut	DIN 934 M12
11	1	40047	Central pan brace	From MY2010

Item	Item no.	22 ft	25 ft	30 ft	35 ft
1-11	40480	27	31	38	45

Parts list

Outboard pans left and right

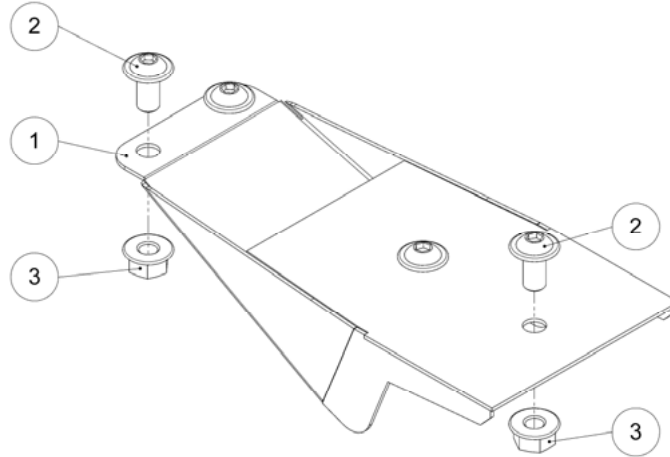


Item	Quantity	Item no.	Designation	Description
1	-	40062	Outboard pan 2 finger	Left side – 145 mm
	-	40058	Outboard pan 3 finger	Left side – 212 mm
	-	40065	Outboard pan 2 finger	Right side – 135 mm
	-	40060	Outboard pan 3 finger	Right side – 212 mm

Item	Item no.	22 ft	25 ft	30 ft	35 ft	Designation
1	40062	-	-	-	1	Outboard pan 2 finger left side
	40058	1	1	1	-	Outboard pan 3 finger left side
	40065	-	-	1	1	Outboard pan 2 finger right side
	40060	1	1	-	-	Outboard pan 3 finger right side

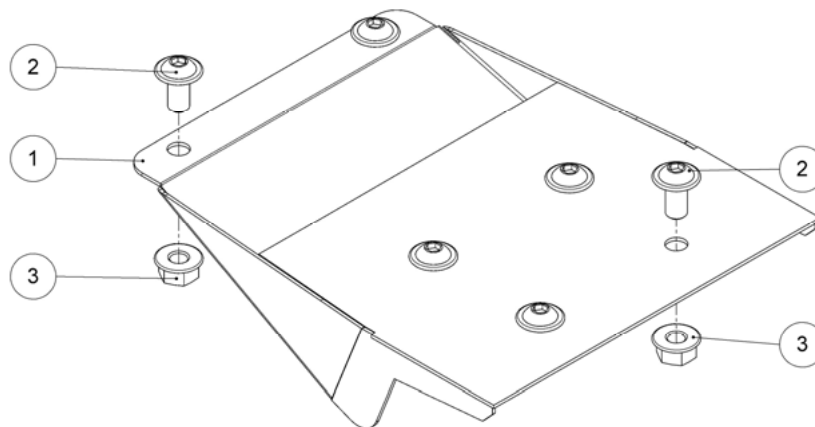
Parts list

Finger cover 2 finger low (92 mm)



Item	Quantity	Item no.	Designation	Description
1	1	40979	Finger cover – 2 finger	92 mm - low
2	4	70031	Countersunk hex button head bolt	ISO 7380-2 – M8x16
3	4	70005	Hex nut with flange	DIN 6923 – M8
1-3	-	40987	Outboard pan 2 finger low (92 mm)	Assembly - universal

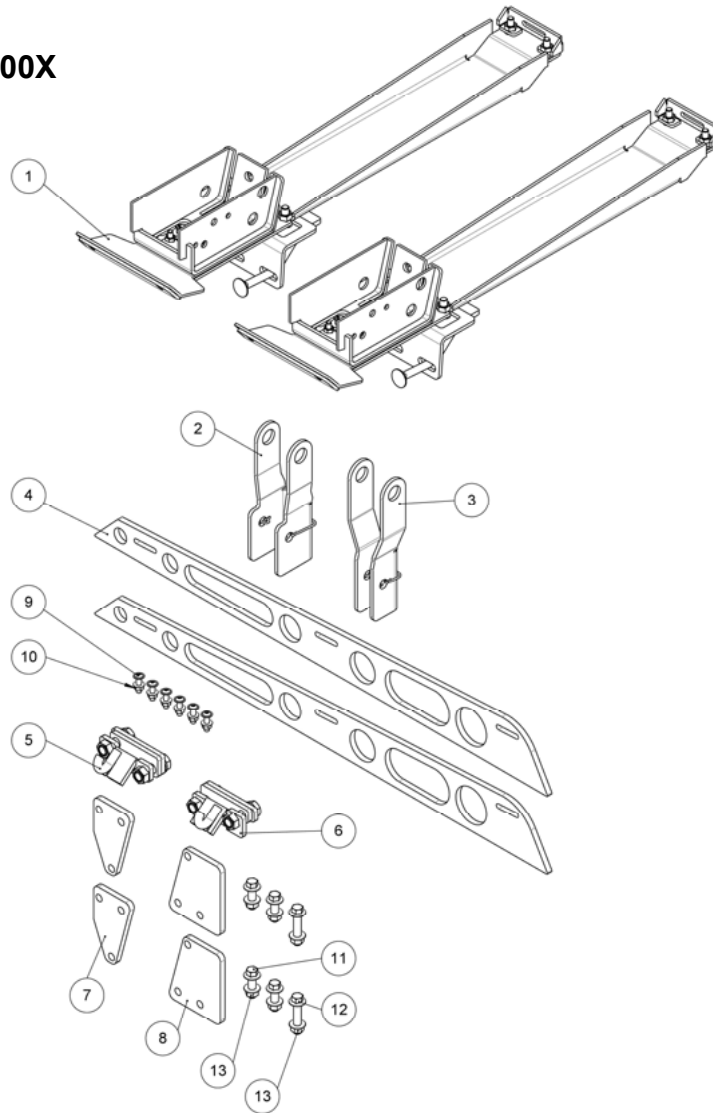
Finger cover 3 finger low (168 mm)



Item	Quantity	Item no.	Designation	Description
1	1	41057	Finger cover – 3 finger	168 mm - low
2	6	70031	Countersunk hex button head bolt	ISO 7380-2 – M8x16
3	6	70005	Hex nut with flange	DIN 6923 – M8
1-3	-	40981	Outboard pan 3 finger low (168 mm)	Assembly - universal

Parts list

Accessory pack – 600X

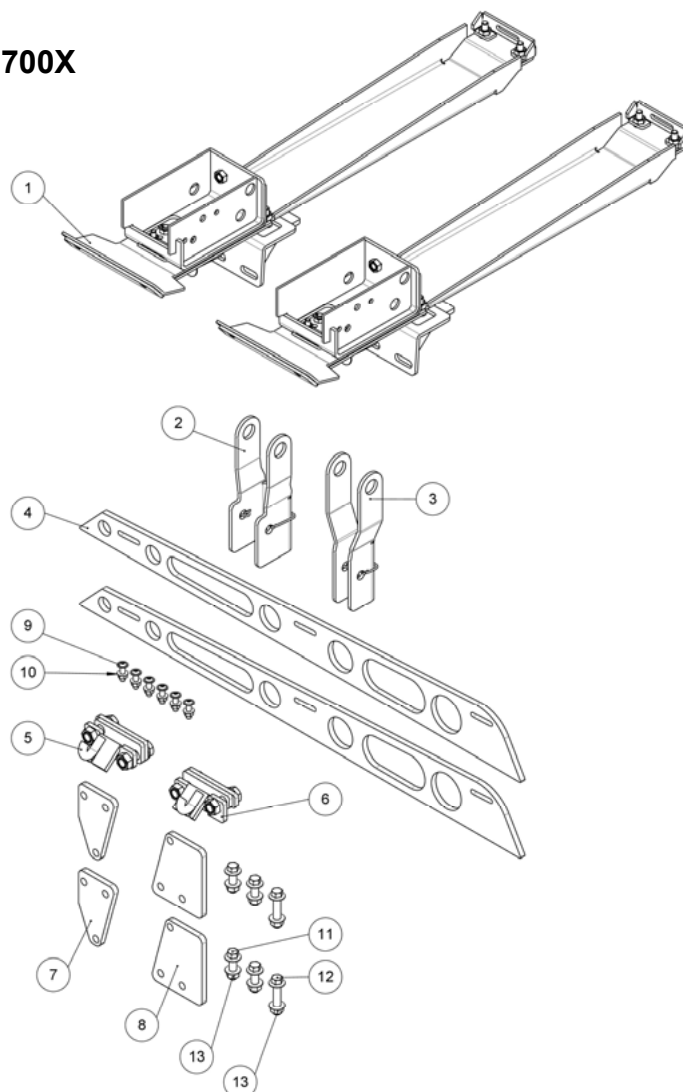


Item	Quantity	Item no.	Designation	Description
1	2	40575	Central support complete –	Accessories 22 – 20 ft *
	4		John Deere 600X	Accessories 35 ft *
2	1		Reel support, left side	See page 65
3	1		Reel support, right side	See page 65
4	2	40404	Spacer plate	t = 10 mm
5	1		Locking unit, left side	See page 70
6	1		Locking unit, right side	See page 70
7	2	40493	Bottom shim	
8	2	40494	Top shim	
9	6	091558	Countersunk hex button head bolt	ISO 7380/2 – M8x30
10	6	70005	Hex nut with flange	DIN 6923 – M8
11	4	093117	Hex bolt with flange	Ähnl. DIN 6921 – M12x40
12	2	093621	Hex bolt with flange	DIN 6921 – M12x60
13	6	70012	Hex nut with flange	DIN 6923 – M12

* See page 66 - 67

Parts list

Accessory pack – 700X

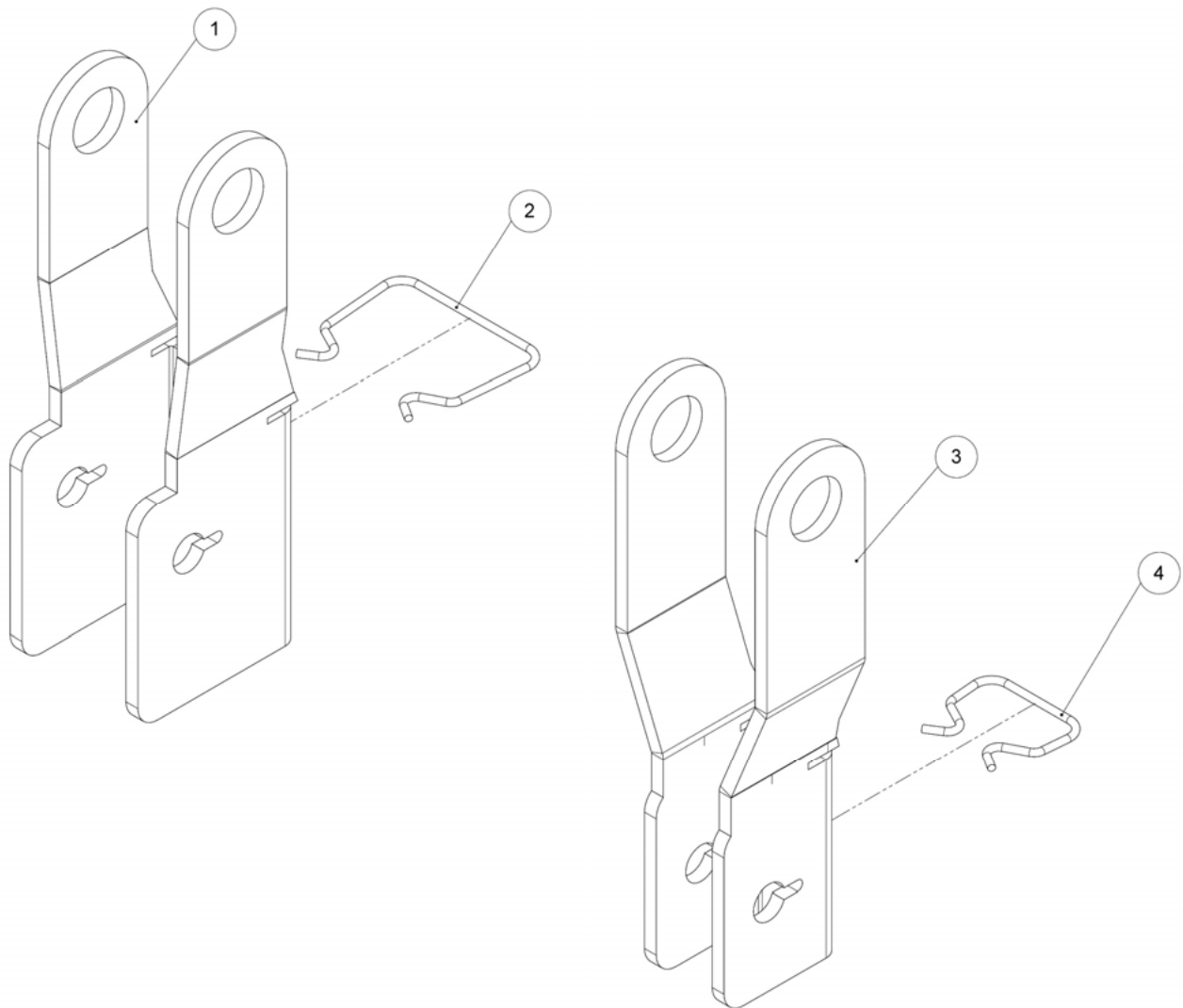


Item	Quantity	Item no.	Designation	Description
1	2	41029	Central support complete –	Accessories 22 – 20 ft *
	4		John Deere 700X	Accessories 35 ft *
2	1		Reel support, left side	See page 65
3	1		Reel support, right side	See page 65
4	2	40404	Spacer plate	t = 10 mm
5	1		Locking unit, left side	See page 70
6	1		Locking unit, right side	See page 70
7	2	40493	Bottom shim	
8	2	40494	Top shim	
9	6	091558	Countersunk hex button head bolt	ISO 7380/2 – M8x30
10	6	70005	Hex nut with flange	DIN 6923 – M8
11	4	093117	Hex bolt with flange	Ähnl. DIN 6921 – M12x40
12	2	093621	Hex bolt with flange	DIN 6921 – M12x60
13	6	70012	Hex nut with flange	DIN 6923 – M12

* See page 68 - 69

Parts list

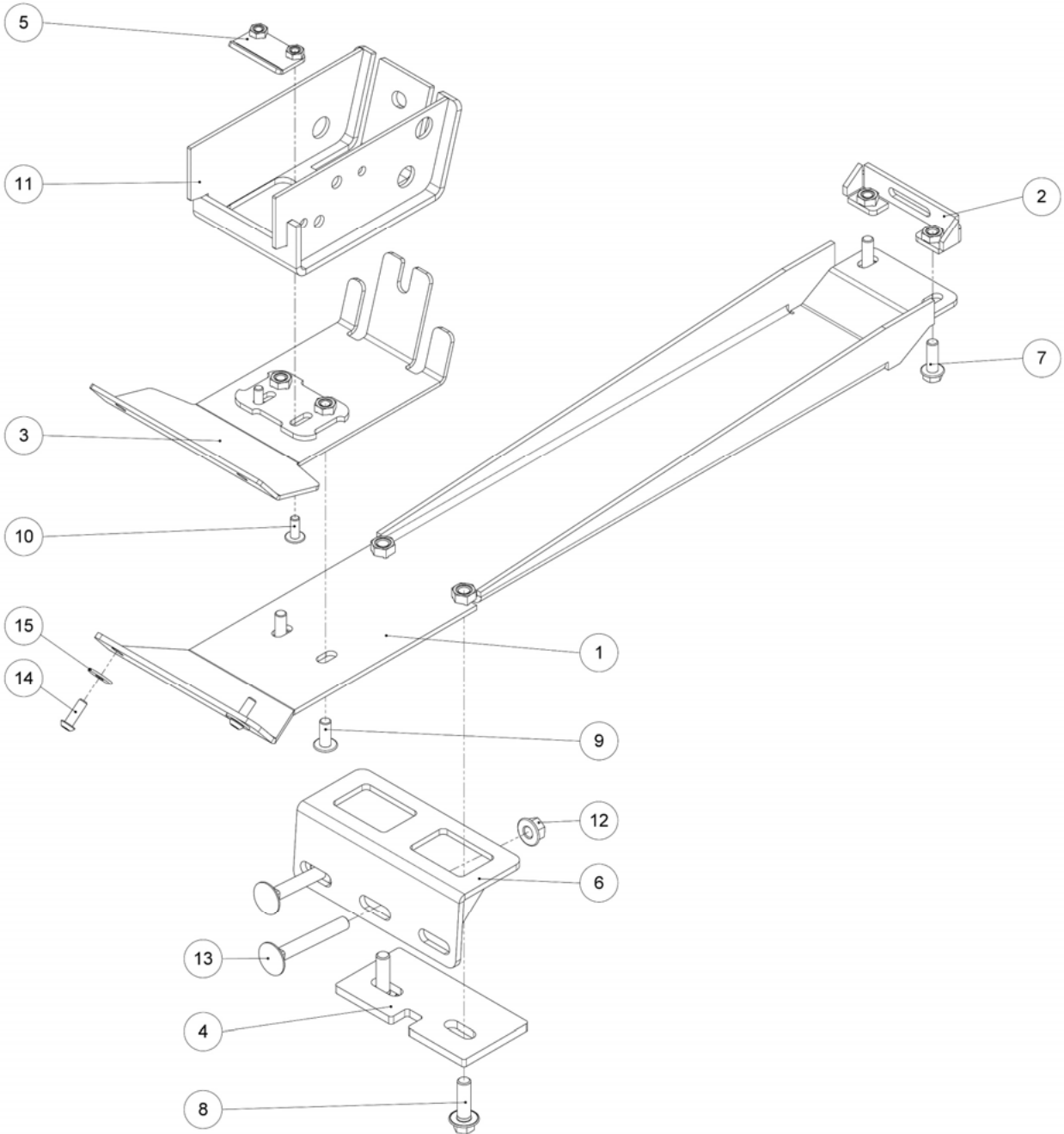
Reel support



Item	Quantity	Item no.	Designation	Technical information
1	1	40580	Reel support, left side	
2	1	HXE103986	Holder	
3	1	40582	Reel support, right side	
4	1	H87239	Holder	

Parts list

Central support assembly 600X



Parts list

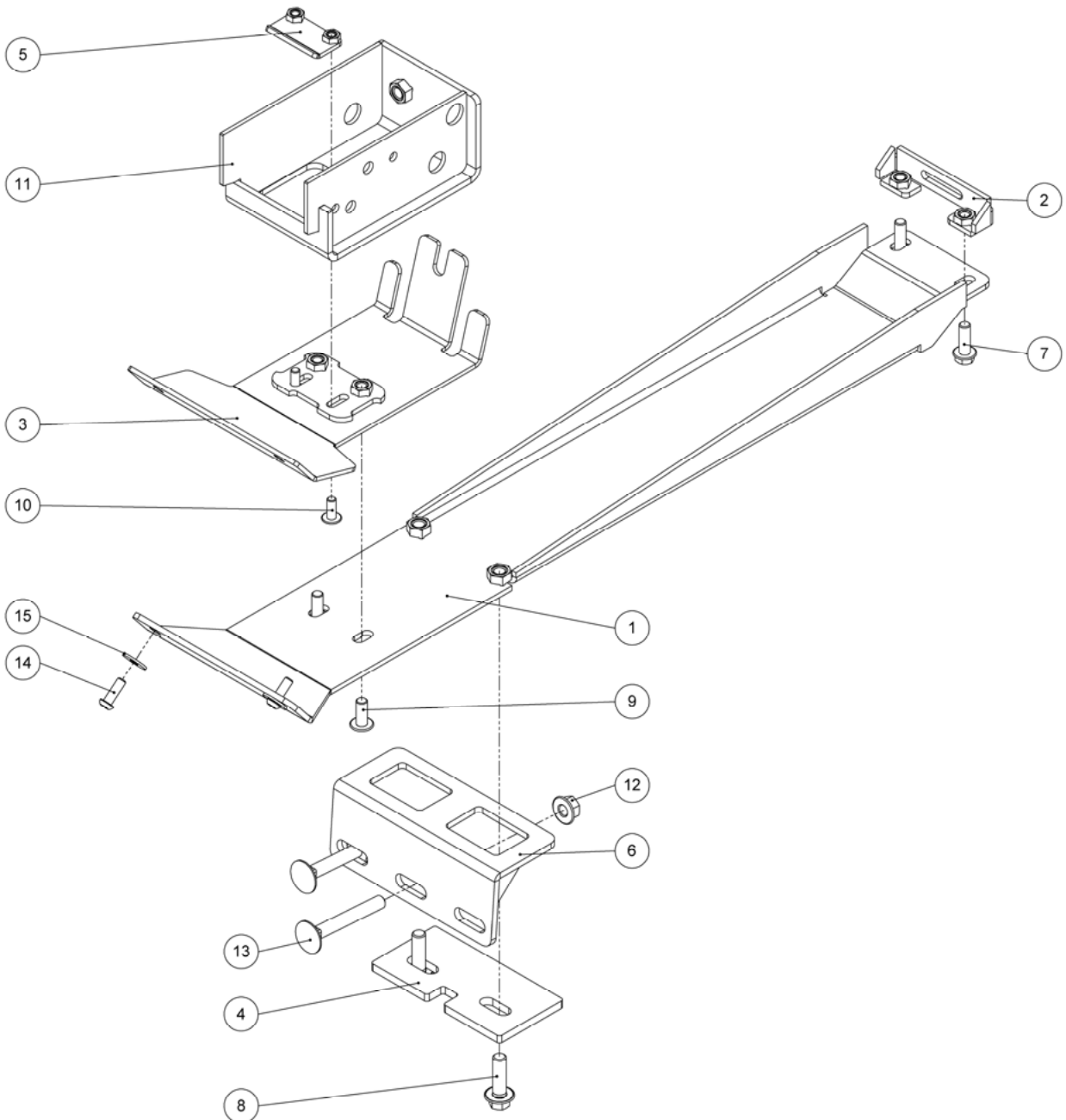
Central support assembly 600X

Item	Quantity	Item no.	Designation	Technical information
1	1	40595	Central support base plate	
2	1	40594	Bracket assembly: Rear plate of central support cover	
3	1	40522	Cutter bar cover skid base plate	
4	1	40564	Central support cover plate	
5	1	40735	Cutter bar cover clamping element assembly	
6	1	40566	Central support assembly	
7	2	70025	Serrated flange bolt	similar to DIN 6921 - M10x30
8	2	93117	Serrated flange bolt	similar to DIN 6921 - M12x40
9	2	91543	Countersunk hex button head bolt	ISO 7380/2 - M10x25 with collar
10	2	70033	Countersunk hex button head bolt	ISO 7380/2 - M8x20 with collar
11	1	AXE61007	Retaining clip	
12	2	70012	Hex nut with flange	DIN 6923 - M12
13	2	70205	Carriage bolt	DIN 603 - M12x90
14	-	-	Countersunk hex button head bolt	M8x25 on the header
15	-	-	Washer	8 on the header

Item	Item no.	22 ft	25 ft	30 ft	35 ft	Designation
1-15	-	2	2	2	4	Central support assembly

Parts list

Central support assembly 700X



Parts list

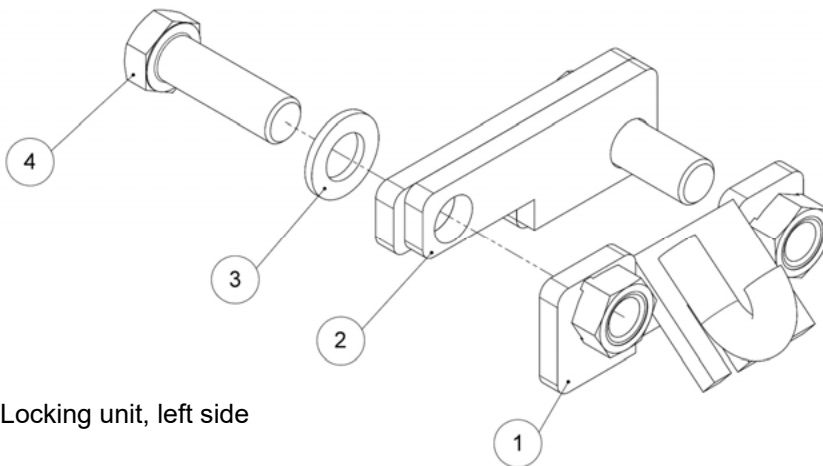
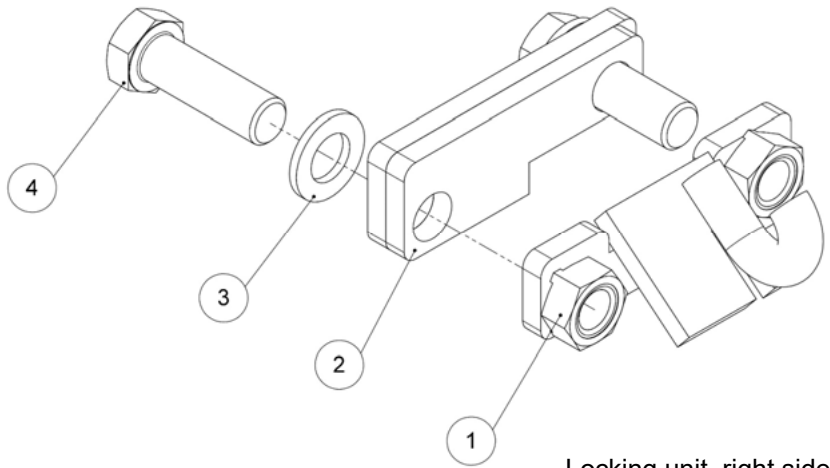
Central support assembly 700X

Item	Quantity	Item no.	Designation	Technical information
1	1	40595	Central support base plate	
2	1	40594	Bracket assembly: Rear plate of central support cover	
3	1	40290	Cutter bar cover skid base plate	
4	1	40564	Central support cover plate	
5	1	40735	Cutter bar cover clamping element assembly	
6	1	40566	Central support assembly	
7	2	70025	Serrated flange bolt	similar to DIN 6921 - M10x30
8	2	93117	Serrated flange bolt	similar to DIN 6921 - M12x40
9	2	91543	Countersunk hex button head bolt	ISO 7380/2 - M10x25 with collar
10	2	70033	Countersunk hex button head bolt	ISO 7380/2 - M8x20 with collar
11	1	40918	Retaining clip AHC	
12	2	70012	Hex nut with flange	DIN 6923 - M12
13	2	70205	Carriage bolt	DIN 603 - M12x90
14	-	-	Countersunk hex button head bolt	M8x25 on the header
15	-	-	Washer	8 on the header

Item	Item no.	22 ft	25 ft	30 ft	35 ft	Designation
1-15	-	2	2	2	4	Central support assembly

Parts list

Accessories - locking units right and left



Item	Quantity	Item no.	Designation	Technical information
1	1	40590	Locking unit, right side	Front hook
	1	40588	Locking unit, left side	Front hook
2	1	40591	Locking unit, right side	Rear fastener
	1	40589	Locking unit, left side	Rear fastener
3	2	70078	Washer	DIN 125 A - 16
4	2	70064	Hex bolt	DIN 933 - M16x50

Item	Item no.	22 ft	25 ft	30 ft	35 ft	Designation
1-4	40587	1	1	1	1	Locking unit, right side
	40511	1	1	1	1	Locking unit, left side

Torques for Metric Bolts

Bolts	Grade 4.8				Grade 8.8 oder 9.8				Grade 10.9				Grade 12.9			
	Oiled		Dry		Oiled		Dry		Oiled		Dry		Oiled		Dry	
Size	N•m	lb-in	N•m	lb-in	N•m	lb-in	N•m	lb-in	N•m	lb-in	N•m	lb-in	N•m	lb-in	N•m	lb-in
M6	4,7	42	6	53	8,9	79	11,3	100	13	115	16,5	146	15,5	137	19,5	172
M8	11,5	102	14,5	128	22	194	27,5	243	32	23,5	40	29,5	37	27,5	47	35
M10	23	204	29	21	43	32	55	40	63	46	80	59	75	55	95	70
M12	40	29,5	50	37	75	55	95	70	110	80	140	105	130	95	165	120
M14	63	46	80	59	120	88	150	110	175	130	220	165	205	150	260	190
M16	100	74	125	92	190	140	240	175	275	200	350	255	320	235	400	300
M18	135	100	170	125	265	195	330	245	375	275	475	350	440	325	560	410
M20	190	140	245	180	375	275	475	350	530	390	675	500	625	460	790	580
M22	265	195	330	245	510	375	650	480	725	535	920	680	850	625	1080	800
M24	330	245	425	315	650	80	820	600	920	680	1150	850	1080	800	1350	1000
M27	490	360	625	460	950	700	1200	885	1350	1000	1700	1250	1580	1160	2000	1475
M30	660	490	850	625	1290	950	1630	1200	1850	1350	2300	1700	2140	1580	2700	2000
M33	900	665	1150	850	1750	1300	2200	1625	2500	1850	3150	2325	2900	2150	3700	2730
M36	1150	850	1450	1075	2250	1650	2850	2100	3200	2350	4050	3000	3750	2770	4750	3500
<p>The tightening torques given are guideline values. Do NOT use these values if a different torque or another securing method is specified for a specific application. For stainless steel bolts and nuts for stirrup bolts, see specific instructions. Tighten locking nuts with plastic insert or edge-raised steel locking nuts to the corresponding torque for dry bolts and nuts given in the table unless otherwise instructed.</p>								<p>Shear pins are designed to break at a certain load. When replacing shear pins, use only pins of the same grade. When replacing bolts and nuts, make sure that equivalent parts of the same or a higher grade are used. Tighten higher-grade nuts and bolts to the same torque as the originally used parts. Make sure that the thread is clean and the bolts correctly fitted. If possible, oil normal and galvanised nuts and bolts (except for locking nuts and wheel studs or nuts) unless specified otherwise for the specific application.</p>								
<p>“Oiled” means that a lubricant, such as engine oil, is applied to the bolts or that phosphatized or oiled bolts with a size from M20 are used.</p>																
<p>“Dry” means the use of normal or galvanised bolts without lubrication or bolts with a size between M6 and M18 that are zinc-coated.</p>																

General terms of guarantee

Zürn Harvesting GmbH & Co. KG, Kapellenstraße 1, D-74214 Schöntal-Westernhausen (hereinafter “Zürn Harvesting”) hereby certifies for each customer who has purchased a new Zürn Harvesting machine from an authorised dealer that the materials and workmanship of this machine are guaranteed under the conditions specified below, providing that the machine is put into operation and maintained in accordance with the specifications in the operating instructions.

I. Duration of the guarantee

The guarantee period is one year from delivery of the machine by Zürn Harvesting and is valid for up to 500 operating hours within this period. The replacement of individual parts or repair will not prolong the above guarantee period for the machine.

II. Scope of the guarantee

The guarantee embraces only the reimbursement or repair of the parts and reimbursement of work time required in order to effect the repair, based on the repair times allowed by Zürn Harvesting, under the prerequisite that the fault was determined by our technical customer service department and was acknowledged by Zürn Harvesting to be attributable to faulty materials or workmanship. Replaced parts will become the property of Zürn Harvesting. The customer must allow services received from the vendor/dealer under warranty to be credited to the guarantee.

The guarantee does not cover any further claims against Zürn Harvesting. This means in particular that travel and transport costs will not be reimbursed, nor will Zürn Harvesting be liable for consequential damage, such as loss of harvest or losses of income.

III. Limitations of the guarantee

The guarantee does not apply to defects or faults that are attributable to:

- usual wear and tear;
- failure to heed operating, storage or transport instructions contained in the operating manual;
- use other than as intended, inadequate maintenance, inexpert operation or excessive use;
- damage caused to the machine or its equipment caused during transportation or loading; machines, equipment and parts are shipped at the risk of the recipient;
- external influences on the machine, e.g. third-party damage, weathering or other natural occurrences;
- circumstances that were known to the buyer at the time of purchase.

The guarantee will be rendered null and void if technical modifications are made to the machine without the written consent of Zürn Harvesting or if spare parts other than original Zürn Harvesting spare parts are installed and/or if repairs were not carried out by an authorised dealer. The guarantee is likewise voided if the machine was not put into service for the first time by the dealer in accordance with the instructions of Zürn Harvesting.

General terms of guarantee

IV. Assertion of the guarantee

The terms of the guarantee are dependent upon precise observance of the following regulations by both the dealer and the purchaser:

- The guarantee card (machine card) completed by the dealer and customer must be returned to Zürn Harvesting by post or e-mail as soon as the machine has been delivered to the customer.
- Applications for guarantee claims must be formulated on the corresponding Zürn Harvesting form and presented to Zürn Harvesting by the dealer within one calendar month of discovery of the defect/fault.
- The application must be completed legibly and must contain the following information:
 - Name, address and dealer customer number
 - Name and address of the purchaser
 - Exact machine type and designation
 - Complete serial number of the machine
 - Date of delivery to the dealer and to the purchaser
 - Date of the claim
 - Number of operating hours or acreage harvested by the machine
 - Exact description of the damage and information regarding the probable cause
 - Quantity, item numbers and description of damaged parts

The parts reported as damaged must be returned to Zürn Harvesting free of charge for appraisal, complete with a copy of the guarantee claim application. Any costs incurred for returning the parts replaced or repaired will be borne by the sender.

If the guarantee claim application is refused, the dealer or the customer has a period of 15 days, starting from the day the Zürn Harvesting decision was received, to demand return of the damaged parts. Once this period has elapsed, the parts will be disposed of.

V. Additional clauses

Claims under the guarantee may not be transferred to third parties without the prior, written consent of Zürn Harvesting.

The dealer has neither the right nor the authority to make declarations or to enter into a commitment etc., whether express or implied, in the name of Zürn Harvesting.

The technical support for repair of the machine given by Zürn Harvesting or their representatives excludes any further liability whatsoever by Zürn Harvesting and has no influence whatsoever on the existing terms of guarantee.

Zürn Harvesting reserves the right to modify the design of the machine without prior notice. It is not obliged to transfer such modifications to machines which have already been sold or are in use.

Furthermore, due to the rapid development of the state of the art, no guarantee can be given for the machine descriptions contained in these operating instructions or other technical leaflets and data sheets.

EG- Konformitätserklärung

EG- Konformitätserklärung nach Maschinenrichtlinie 2006/42/EG

Bitte sorgfältig aufbewahren, jedoch nicht im Fahrzeug

EU CERTIFICATE OF CONFORMITY According to Machinery Directive 2006/42/EG

Please keep safely, not inside the vehicle

Hiermit bestätigt die <i>Hereby declares</i>	Zürn Harvesting GmbH & Co. KG	
in alleiniger Verantwortung dass das landwirtschaftliche Anbaugerät <i>the full responsibility for the agricultural implement</i>	Fabrikmarke <i>Brand</i>	Zürn Harvesting GmbH
	Typ <i>Type</i>	SBV
genehmigt in <i>approved in</i>	Schoental	
am <i>on</i>	03.03.2023	
durch den <i>by the</i>	Hersteller / manufacturer	
den grundlegenden Sicherheits- und Gesundheitsanforderungen der Richtlinie 2006/42/EG entspricht. <i>to full fill the complete safety- and health requirements according to machinery directive 2006/42/EG.</i>		
Zur sachgerechten Umsetzung der in den EU- Richtlinien genannten Sicherheits- und Gesundheitsanforderungen wurden folgende Normen herangezogen: <i>For proper implementation according to the EU- Directives for health and safety requirements, the following standards were used:</i>	DIN EN ISO 4254-1 (09/16) DIN EN ISO 4254-7 (12/19)	
Geschehen zu <i>Done at</i>	Schoental	
am <i>on</i>	03/03/23	
	 Rolf Zürn Geschäftsführer, CEO	

Contacts

Ersatzteilbestellung / Spare parts order / Commande des pièces:
Tel.: 0049 (0) 6297 / 92588-27
Fax. 0049 (0) 6297 / 92588-19
E-Mail: parts@zuern.de

Zürn Harvesting GmbH & Co. KG
Eichenstraße 27
D-74747 Ravenstein- Merchingen

Tel.: +49 6297 92885-0
Fax: +49 6297 92885-19
E-Mail: info@zuern.de

Internet: www.zuern.de