



Operating Manual

Side Knife

John Deere Draper 600D

Version A

Zürn Harvesting GmbH & Co. KG
Eichenstraße 27
D-74747 Ravenstein- Merchingen
Tel.: +49 6297 92885-0
Fax: +49 6297 92885-19
E-Mail: Info@zuern.de
Internet: www.zuern.de

Masthead

Title: Operating Manual SWW660
Manufacturer: Zürn Harvesting GmbH & Co. KG
Schöntal

Applicable to: John Deere Flex Draper 600D

Print number: 16388

1st issue 2018 (Version A), editorial date 05/2018

© Zürn Harvesting GmbH & Co. KG

Author: Nadine Schneider

All rights reserved, also applies to the translation.
No part of this operating manual must be reproduced in any form (print, photocopy or any other process) or processed, duplicated or distributed using electronic systems without the written permission of the Zürn Harvesting GmbH & Co. KG, Schöntal.

We reserve the right to make technical amendments

Printed on paper made from chlorine-free and acid-free bleached pulp

Foreword

This trailer is designed only for the usual application in agricultural work or similar activities. Any other use beyond this is deemed improper use of the machine. The manufacturer accepts no liability whatsoever for damage resulting from improper use; the risk will be borne solely by the user. Proper use also includes complying with the operation, maintenance and service conditions specified by the manufacturer.

Read this operating manual thoroughly to familiarise yourself with the correct operation and maintenance of the machine and to prevent injuries or damage to the machine. Not doing so can result in injuries or machine damage. This operating manual and the safety labels on the machine may also be available in other languages: please enquire at your dealership.

This operating manual is part of the machine and should be handed over to the purchaser if the machine is re-sold.

Dimensions specified in this operating manual are metric. Use only appropriate parts and bolts. Different spanners are required for metric bolts and bolts with imperial (inch) dimensions.

The designations "left" and "right" are with reference to the forward direction of the machine.

Enter the serial number in the first section of the operating manual. Please record all numbers accurately. In case of theft, these numbers can be important for tracing the machine. Your dealer also needs these numbers when you order spare parts. It is a good idea to keep a second record of these numbers in another location.

Your dealer has carried out an inspection of the machine prior to delivery. A further inspection should be carried out by your dealer after the first 20 to 50 hours of operation in order to ensure the best possible performance for the machine.

This trailer must only be used, serviced and repaired by persons who are familiar with it and who have been briefed about its hazards. The relevant accident prevention regulations and other generally recognized rules and laws for safety, occupational health and road traffic must also be observed. Unauthorized changes to this trailer release the manufacturer from liability for any resulting damage.

Rating Plate

Please make a note of the type designation and serial number of your machine here. This information must be given to the authorised dealer when ordering spare parts or making guarantee enquiries.

Type: _____

Serial number: _____

Typ	_____	ZÜRN H A R V E S T I N G
Modell	_____	
Bezeichnung	_____	CE
Serien-Nr.	_____	
Baujahr	_____	Zürn Harvesting GmbH & Co. KG Kapellenstr. 1 · D-74214 Schöntal Tel. +49 7943/9105-0 Made in Germany · www.zuern.de
Leergewicht	_____	

Table of Content

Masthead	1
Foreword	2
Rating Plate	3
Table of content	4
Safety Decals	12
Operating Manual	13
Reel Position	14
Replace Knife Head	15
Install Mounting Bracket	16
Connect Dual Drive	18
Single Drive	19
Check Settings	20
Spare parts list	22
Side Knife LH	23
Side Knife RH	25
Frame	27
Cutterbar	29
Guard	31
Drive Shaft	32
Drive Rod	33
Accessory Kit Side Knife RH	34
Accessory Kit Side Knife LH	35
Mounting bracket	36
Tie Rod	37
Option Single Drive	38
Decal	39
General terms of guarantee	40
General terms of guarantee	41
Torques for metric bolts	42
EG- Konformitätserklärung nach Maschinenrichtlinie 2006/42/EG	43
Contact	44

Safety

Recognize Safety Information

This is a safety-alert symbol. When you see this symbol on your machine or in this manual, be alert to the potential for personal injury.

Follow recommended precautions and safe operating practices.



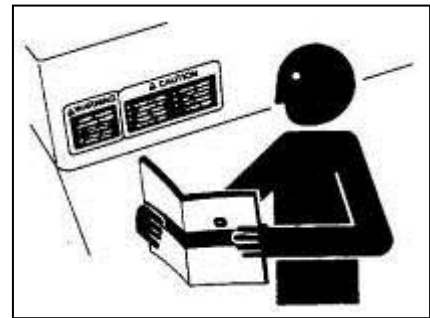
Follow Safety Instructions

Carefully read all safety messages in this manual and on your machine safety signs. Keep safety signs in good condition. Replace missing or damaged safety signs. Be sure new equipment components and repair parts include the current safety signs. Replacement safety signs are available from your John Deere dealer.

Learn how to operate the machine and how to use controls properly. Do not let anyone operate without instruction.

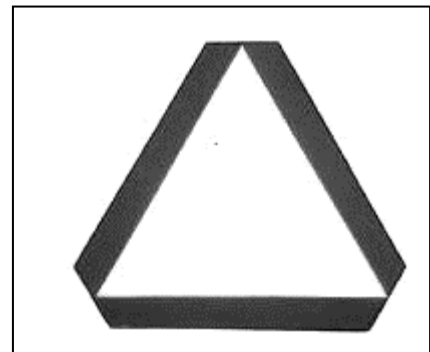
Keep your machine in proper working condition. Unauthorized modifications to the machine may impair the function and/or safety and affect machine life.

If you do not understand any part of this manual and need assistance, contact your John Deere dealer.



Observe Road Traffic Regulations

Always observe local road traffic regulations when using public roads.



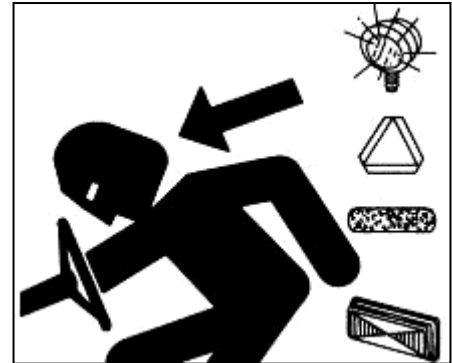
Safety

Use Safety Lights and Devices

Slow moving tractors, self-propelled equipment and towed implements or attachments can create a hazard when driving on public roads. They are difficult to see, especially at night. Avoid personal injury or death resulting from collision with a vehicle.

If legally permitted, use flashing warning lights or rotary beacons whenever driving on public roads. To increase visibility, use the lights and devices provided with your machine. For some equipment, install additional flashing warning lights.

Keep safety items in good condition. Replace missing or damaged items. An implement safety lighting kit is available from your John Deere dealer.

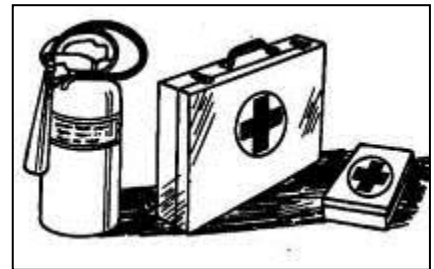


Prepare for Emergencies

Be prepared if a fire starts.

Keep a first aid kit and fire extinguisher handy.

Keep emergency numbers for doctors, ambulance service, hospital, and fire department near your telephone.



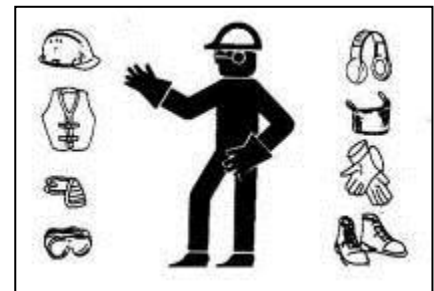
Wear Protective Clothing

Wear close fitting clothing and safety equipment appropriate to the job.

Prolonged exposure to loud noise can cause impairment or loss of hearing.

Wear a suitable hearing protective device such as earmuffs or earplugs to protect against objectionable or uncomfortable loud noises.

Operating equipment safely requires the full attention of the operator. Do not wear radio or music headphones while operating machine.



Safety

Store Attachments Safely

Stored attachments such as dual wheels, cage wheels, and loaders can fall and cause serious injury or death.

Securely store attachments and implements to prevent falling. Keep playing children and bystanders away from storage area.

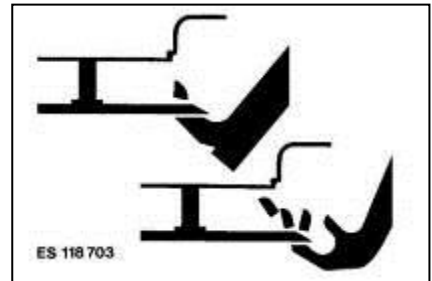


Guards and Shields

Keep guards and shields in place at all times. Ensure that they are serviceable and installed correctly.

Always disengage main clutch, shut off engine and remove key before removing any guards or shields.

Keep hands, feet and clothing away from moving parts.



Stay Clear of Harvesting Units

Cutterbar, auger, reel and feed rolls cannot be completely shielded due to their function. Stay clear of these moving elements during operation. Always disengage main clutch, shut off engine and remove key before servicing or unclogging machine.



Keep Hands Away From Knives

Never attempt to clear obstructions in front of or on harvesting unit unless main clutch is disengaged, engine shut off and key removed.

Everyone must be clear of the machine before starting the engine.



Safety

Stay Clear of Rotating Drivelines

Entanglement in backshaft rotating driveline can cause serious injury or death.

Keep driveline shields in place at all times.

Wear close-fitting clothing. Stop the combine engine and be sure driveline is stopped before making adjustments, connections, or cleaning out header or its drive components.



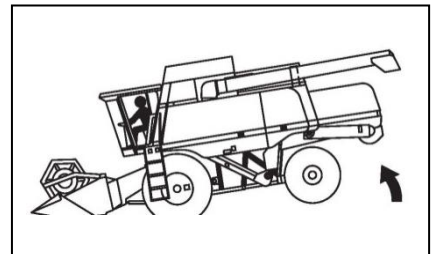
Stay Clear of Cutterbar When Rotating Auger

The cutterbar knife and cross auger use a common belt drive. Whenever the auger is rotated by hand the cutterbar will move. Use extreme caution to keep hands, feet and clothing clear of the cutterbar and its knives when attempting to rotate cross auger for service, adjustment, inspection or unplugging.



Ballasting for Safe Ground Contact

Operating, steering and braking performance of combine can be considerably affected by heavy front end attachments which alter the center of gravity of the combine. To maintain the necessary ground contact, ballast the combine at the rear end as necessary. Observe the maximum permissible axle loads and total weights.



Safety

Practice Safe Maintenance

Understand service procedure before doing work. Keep area clean and dry.

Never lubricate, service, or adjust machine while it is moving. Keep hands, feet, and clothing from power-driven parts. Disengage all power and operate controls to relieve pressure. Lower equipment to the ground. Stop the engine. Remove the key. Allow machine to cool.

Securely support any machine elements that must be raised for service work.

Keep all parts in good condition and properly installed. Fix damage immediately. Replace worn or broken parts. Remove any build-up of grease, oil, or debris.

On self-propelled equipment, disconnect battery ground cable (-) before making adjustments on electrical systems or welding on machine.

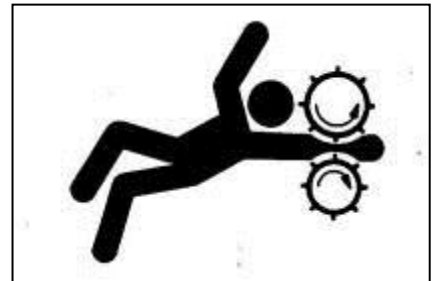
On towed implements, disconnect wiring harnesses from tractor before servicing electrical system components or welding on machine.



Service Machines Safely

Tie long hair behind your head. Do not wear a necktie, scarf, loose clothing, or necklace when you work near machine tools or moving parts. If these items were to get caught, severe injury could result.

Remove rings and other jewellery to prevent electrical shorts and entanglement in moving parts.



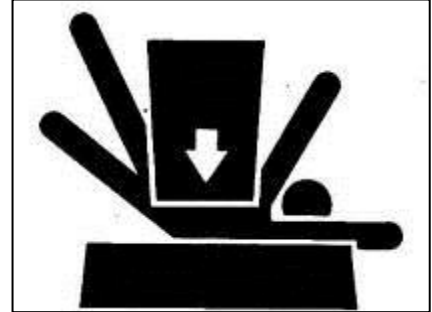
Safety

Support Machine Properly

Always lower the attachment or implement to the ground before you work on the machine. If the work requires that the machine or attachment be lifted, provide secure support for them. If left in a raised position, hydraulically supported devices can settle or leak down.

Do not support the machine on cinder blocks, hollow tiles, or props that may crumble under continuous load. Do not work under a machine that is supported solely by a jack. Follow recommended procedures in this manual.

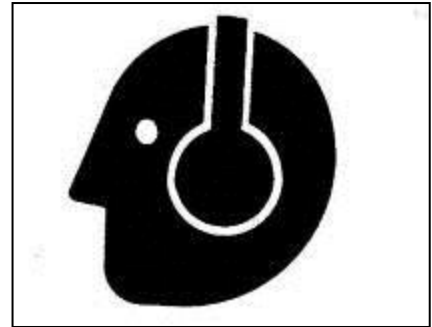
When implements or attachments are used with a machine, always follow safety precautions listed in the implement or attachment operator's manual.



Protect Against Noise

Prolonged exposure to loud noise can cause impairment or loss of hearing.

Wear a suitable hearing protective device such as earmuffs or earplugs to protect against objectionable or uncomfortable loud noises.



Avoid Heating near Pressurized Fluid Lines

Flammable spray can be generated by heating near pressurized fluid lines, resulting in severe burns to yourself and bystanders. Do not heat by welding, soldering, or using a torch near pressurized fluid lines or other flammable materials. Pressurized lines can accidentally burst when heat goes beyond the immediate flame area.



Safety

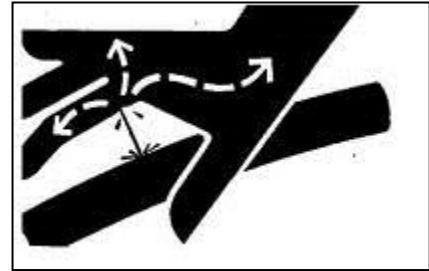
Avoid High-Pressure Fluids

Escaping fluid under pressure can penetrate the skin causing serious injury.

Avoid the hazard by relieving pressure before disconnecting hydraulic or other lines. Tighten all connections before applying pressure.

Search for leaks with a piece of cardboard. Protect hands and body from high pressure fluids.

If an accident occurs, see a doctor immediately. Any fluid injected into the skin must be surgically removed within a few hours or gangrene may result. Doctors unfamiliar with this type of injury should reference a knowledgeable medical source. Such information is available from Deere & Company Medical Department in Moline, Illinois, U.S.A.



Dispose of Waste Properly

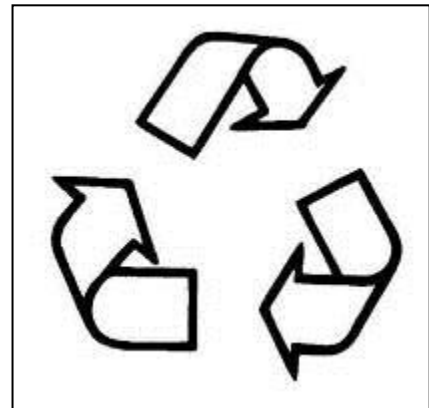
Improperly disposing of waste can threaten the environment and ecology. Potentially harmful waste used with John Deere equipment includes such items as oil, fuel, coolant, brake fluid, filters, and batteries.

Use leakproof containers when draining fluids. Do not use food or beverage containers that may mislead someone into drinking from them.

Do not pour waste onto the ground, down a drain, or into any water source.

Air conditioning refrigerants escaping into the air can damage the Earth's atmosphere. Government regulations may require a certified air conditioning service center to recover and recycle used air conditioning refrigerants.

Inquire on the proper way to recycle or dispose of waste from your local environmental or recycling center, or from your John Deere dealer.



Safety Decals

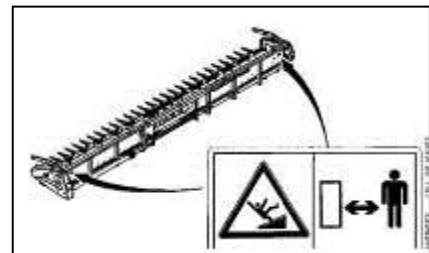
Pictorial Safety Signs

At several important places of this machine safety signs are affixed intended to signify potential danger. The hazard is identified by a pictorial in a warning triangle. An adjacent pictorial provides information how to avoid personal injury. These safety signs, their placement on the machine and a brief explanatory text are shown below



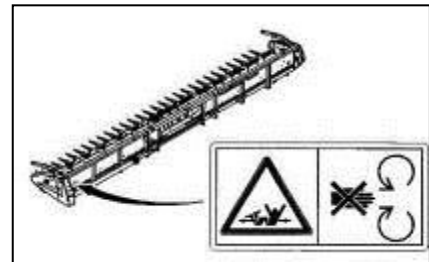
Cutting Platform

DANGER- Stay clear of header. Disengage header drive, shut off engine and remove key before servicing or unclogging header.



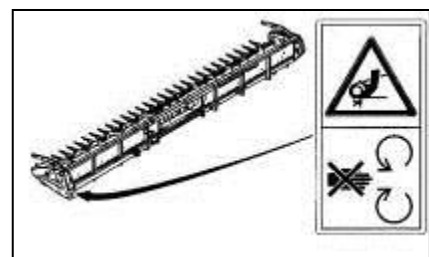
Cutting Platform Drive Shaft

Stay clear of rotating drive shaft to avoid personal injury!



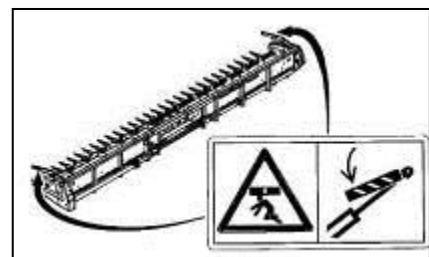
Shields on Cutting Platform Drives

Do not open or remove safety shields while the engine is running.



Reel Lifting Cylinder

Secure lifting cylinder with locking device before entering hazardous area.



Operating Manual



Picture shows the mounted sideknife on the right side. The other side is a mirror image.



Dismount the plastic divider (A) on both sides

Reel Position

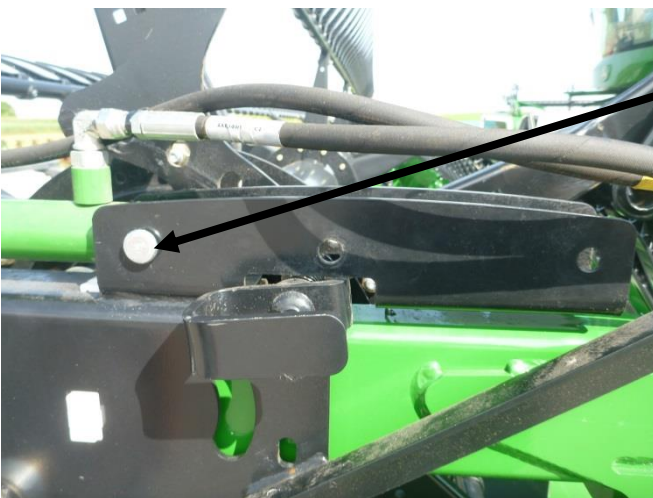


For all headers from 25-35 Ft (reel drive on the rh-side) bring the reel support in the position as backwards as possible.

Therefore bolt the ram in the front hole of the reel support on both sides of the header.



From the outer edge 30 mm away an additional you have to drill a hole with $\varnothing 12,5$ mm.



After you drilled the hole you have to bolt the reel in this position.

(A)

Replace Knife Head



Dismount the knife head on the left and right side. Disconnect the bearing with the two bolts and pull the knife to the outer side.

Mount the delivered right and left side knife head with the drive plate for the side knife.



Be attention to the technical details at the headers operating manual. There are some technical instructions to align the knife head.

The new knife head could be stayed inside the header also for the normal harvest.



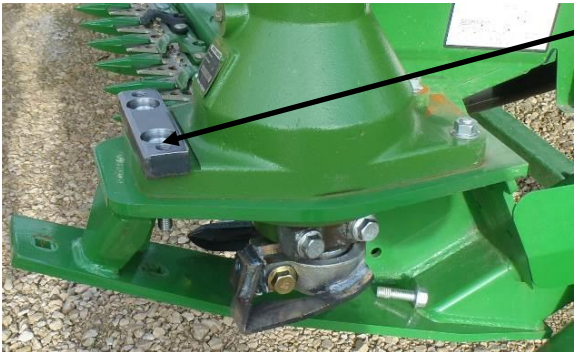
Please mount both knife heads. For the single drive solution see page 11.



Install Mounting Bracket



Remove the two bolts in the front on the knife gear.

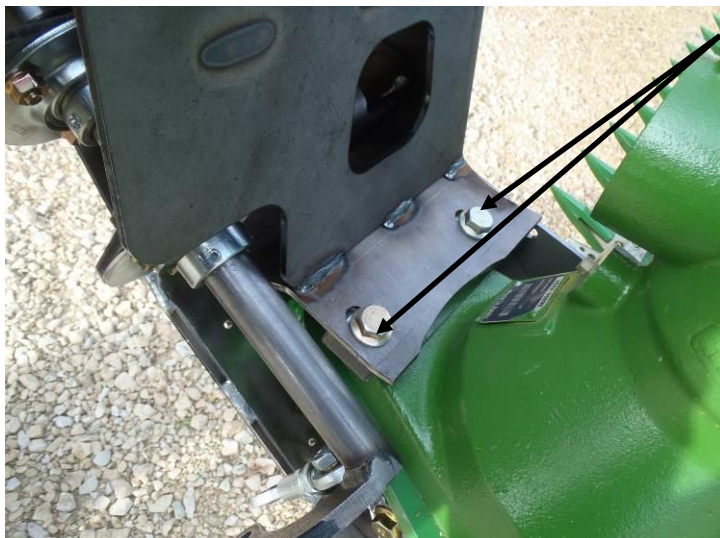


Mount the delivered bracket (chamfer to the front) with the bolts M12 x 55 and Nuts M12 tighten them with 130Nm

Mount the bracket on both side.



If the draper head is a single drive you must mount the distance bushing underneath the mounting bracket. Both bolts should be tightening with 130 Nm.



Push the side knife on the top of the header and mount the two bolts M12x20, not tighten yet.



Mount the two bolts M12 x30 from the bottom, tighten all four bolts and check if the side knife has a good connection to the header.

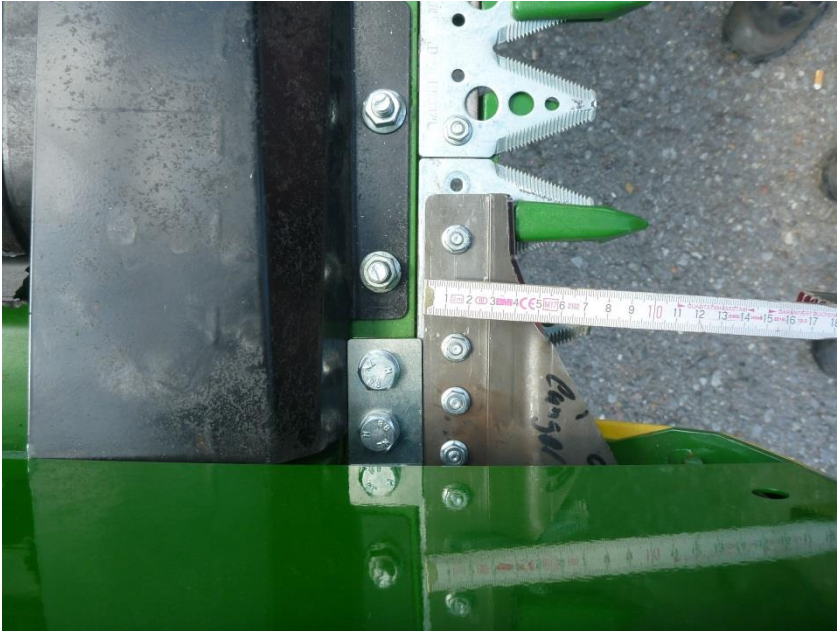


Connect Dual Drive



Connect the tie rod with the drive shaft of the side knife. Mount distance washers (18388) on both sides of the ball joint. Check that the ball joint is right angular to the drive shaft.

Single Drive



Dismount the last finger (4 inch) of the finger bar. Also take out the bolts for the knife plates.

Mount the plates for the knife section. Also bolt the drive plate (single drive) to the knife.

Take the delivered bolt to connect the drive plate to the main knife.

Mount the plate's for the alignment of the knife with the finger (4 inch).



Connect the drive shaft with the tie rod to the drive plate.

Check Settings

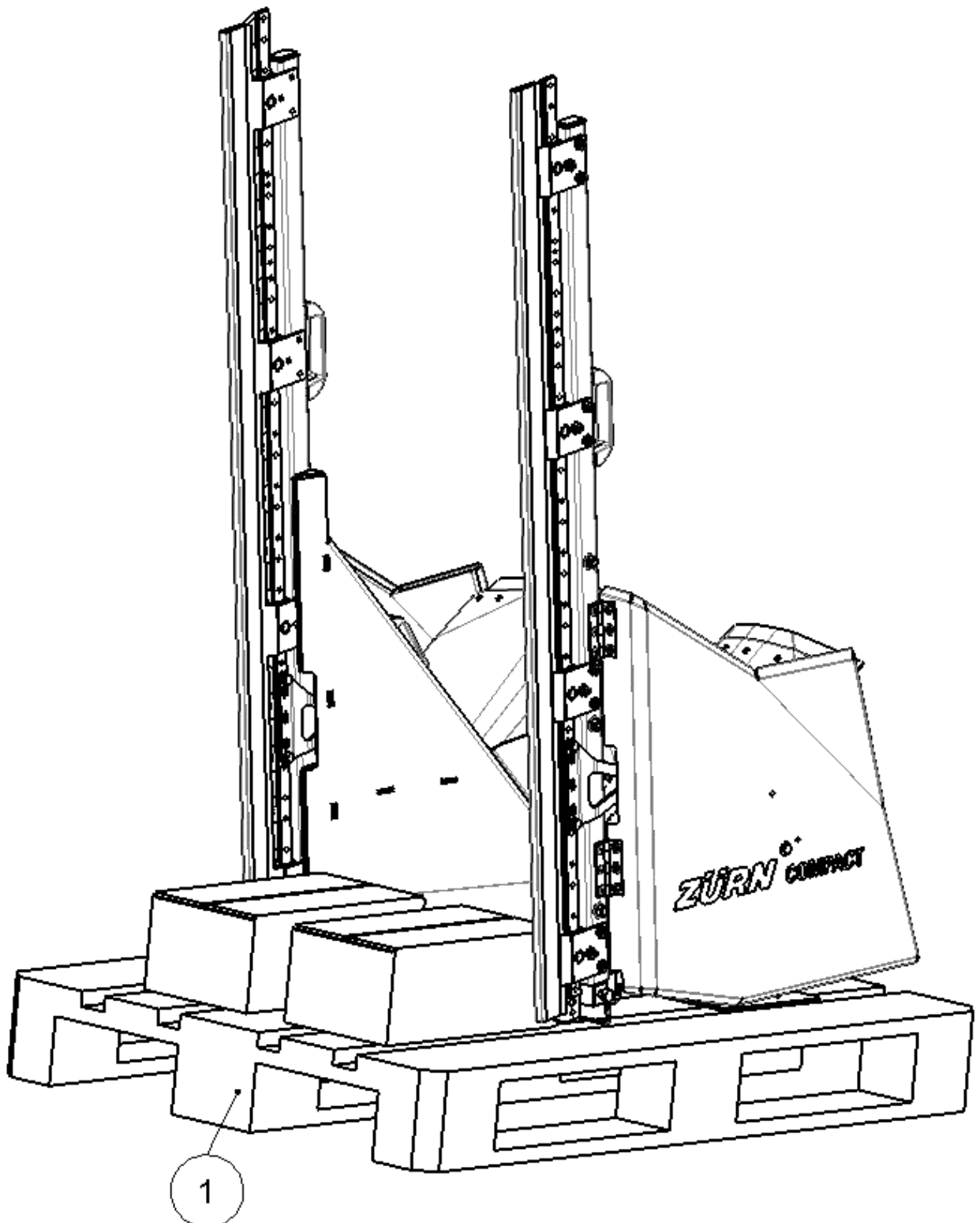


Check the overlapped of the knife sections. The knife should fully move over another.



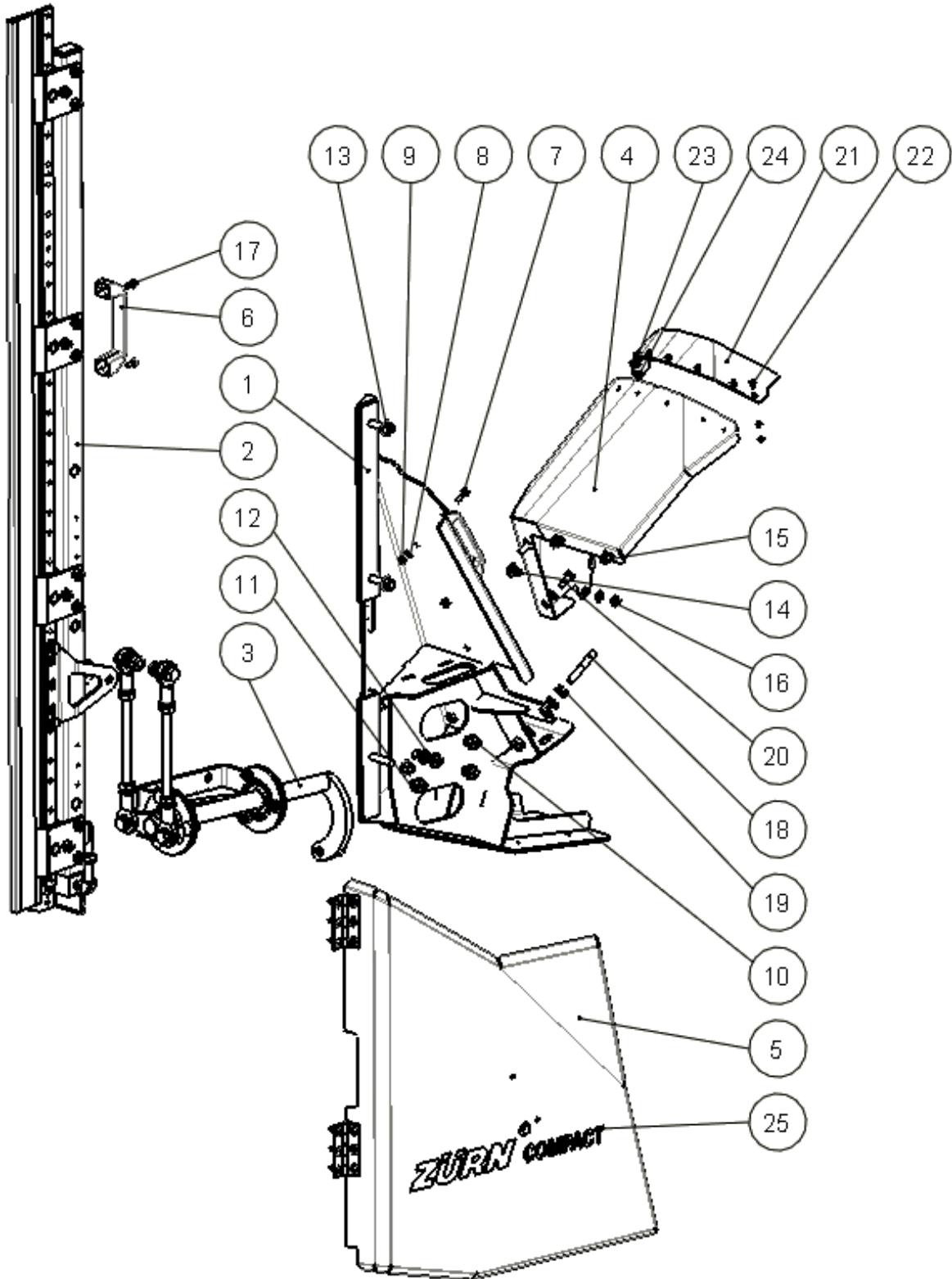
Check the hub from the side knife. Turn the gear box that the knife moves to one side. Check that the drive brackets not hit the side guards. See the picture.

Spare parts list



Pos.	Number	Description	Technical details	Qty.
1	16400	Side Knife Set complete	RH+LH	1

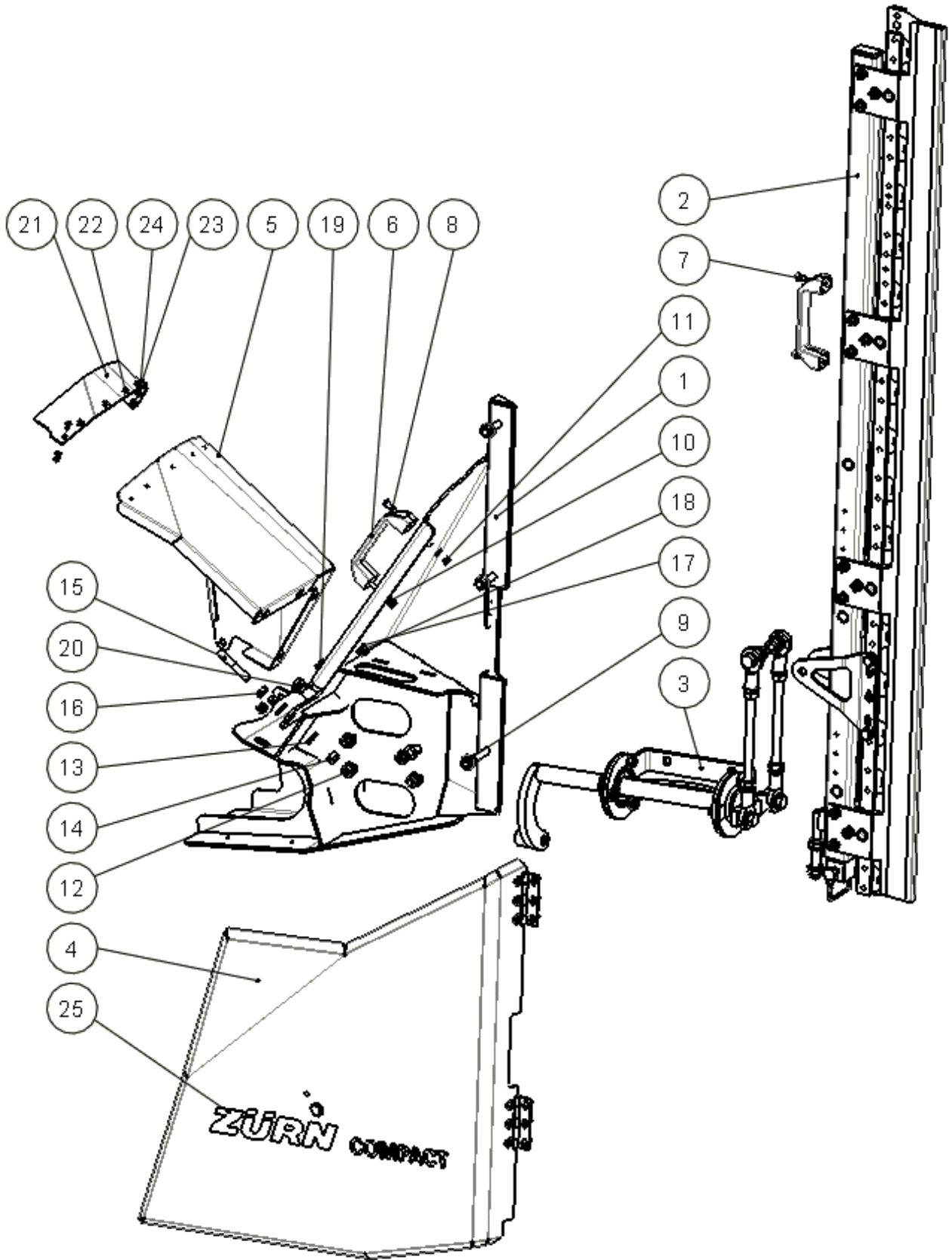
Side Knife LH



Side Knife LH

Pos.	Number	Description	Technical details	Qty.
1	16494	Frame	LH	1
2	16604	Bar complete	LH	1
3	16405	Drife Shaft Assembly	LH	1
4	16413	Cover back	LH	1
5	16416	Side components		1
6	090175	Handle	H=40mm A=122mm for M6	2
7	091536	Bolt	DIN 933 M6x18	2
8	70074	Washer	DIN125 A6	2
9	70020	Nut	DIN 985 M6	2
10	70740	Bolt	DIN 603 M10x25	4
11	70075	Washer	DIN125 A10	6
12	70021	Nut	DIN 985 M10	5
13	70006	Nut	DIN6923 M10	3
14	70146	Bolt	DIN 603 M8x16	1
15	70109	Washer	DIN 125 A8	7
16	70185	Nut	DIN 985 - M8	3
17	091961	Bolt	DIN 912 M6x12	2
18	16125	Locking Pin	M10x60	1
19	70007	Nut	DIN 936 M10	1
20	70060	Bolt	DIN 933 M8x20	4
21	16421	Sealing		1
22	091551	Bolt	ISO 7380-2 M4x12	8
23	70499	Washer	DIN 125 A 4	8
24	091681	Nut	DIN 985 M4	8
25	16229	Decal Compact	L=400 mm	1
1-11	16471	Side Knife complete	LH	

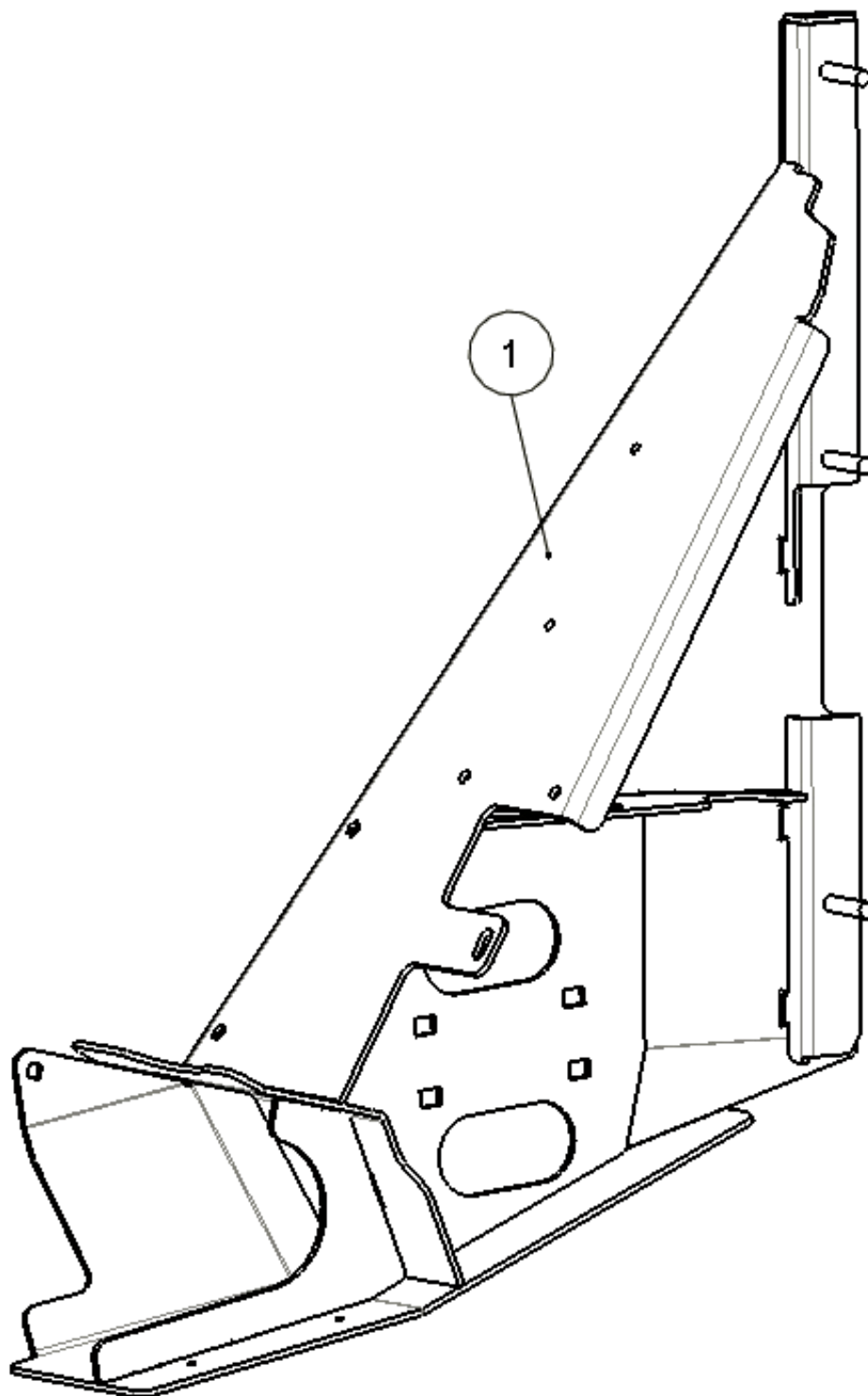
Side Knife RH



Side Knife RH

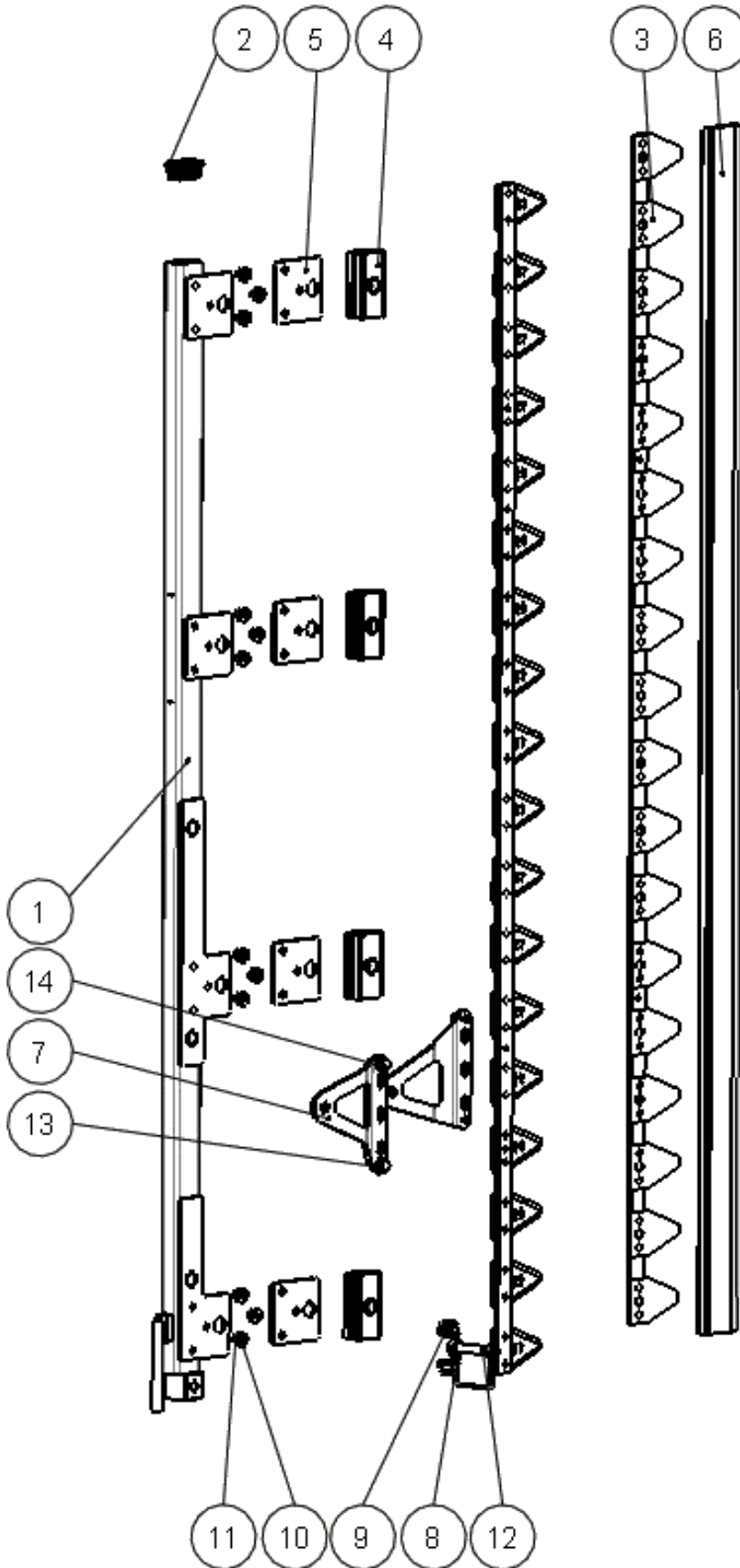
Pos.	Number	Description	Technical details	Qty.
1	16499	Frame	RH	1
2	16605	Bar complete	RH	1
3	16440	Drive Shaft Assembly	RH	1
4	16418	Assembly Guard	RH	1
5	16403	Cover back	RH	1
6	090175	Handle	H=40mm A=122mm for M6	2
7	091961	Bolt	DIN 912 M6x12	2
8	091536	Bolt	DIN 933 M6x18	2
9	70006	Nut	DIN6923 M10	3
10	70074	Washer	DIN125 A6	2
11	70020	Nut	DIN 985 M6	2
12	70740	Bolt	DIN 603 M10x25	4
13	70075	Washer	DIN125 A10	6
14	70021	Nut	DIN 985 M10	5
15	16125	Locking Pin	M10x60	1
16	70007	Nut	DIN 936 M10	1
17	70109	Washer	DIN 125 A8	7
18	70185	Nut	DIN 985 M8	3
19	70060	Bolt	DIN 933 M8x20	4
20	70146	Bolt	DIN 603 M8x16	1
21	16421	Sealing		1
22	091551	Bolt	ISO 7380-2 M4x12	8
23	70499	Washer	DIN 125 A4	8
24	091681	Nut	DIN 985 M4	8
25	16229	Decal Compact	L=400 mm	1
1-11	16475	Side Knife Complete	RH	

Frame



Pos.	Number	Description	Technical details	Qty.
1	16499	Assembly Frame	RH	
	16492	Assembly Frame	LH	

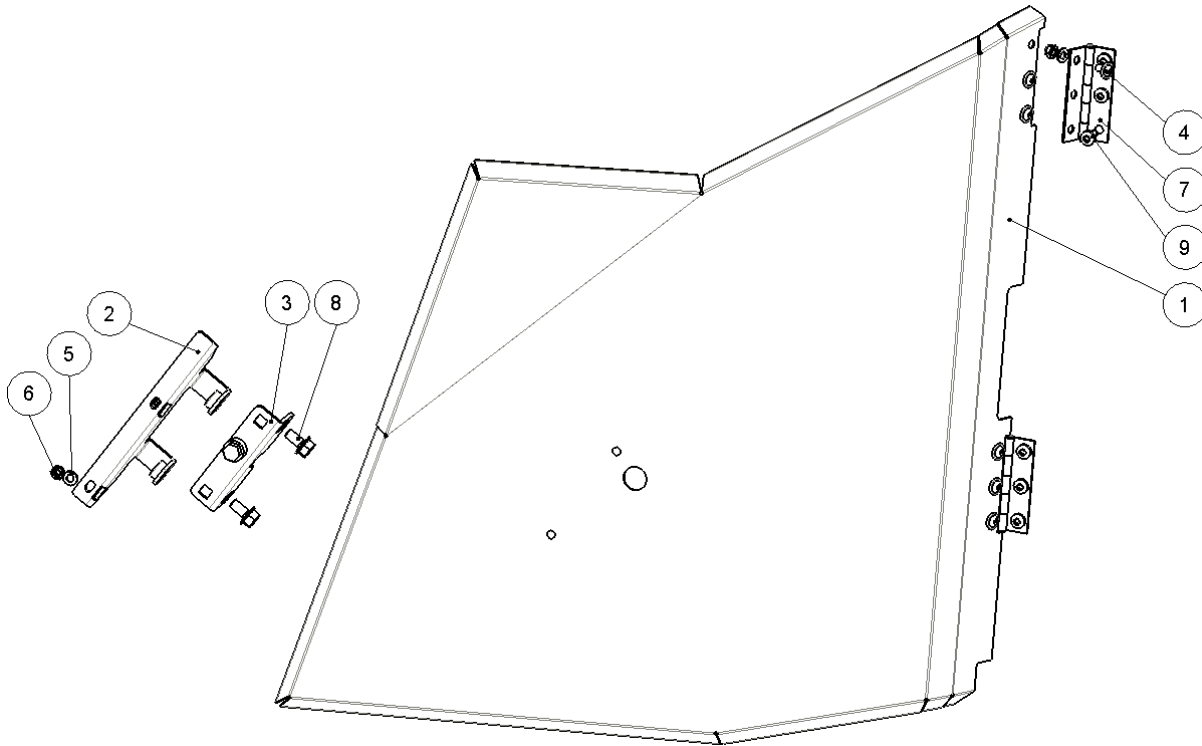
Cutterbar



Cutterbar

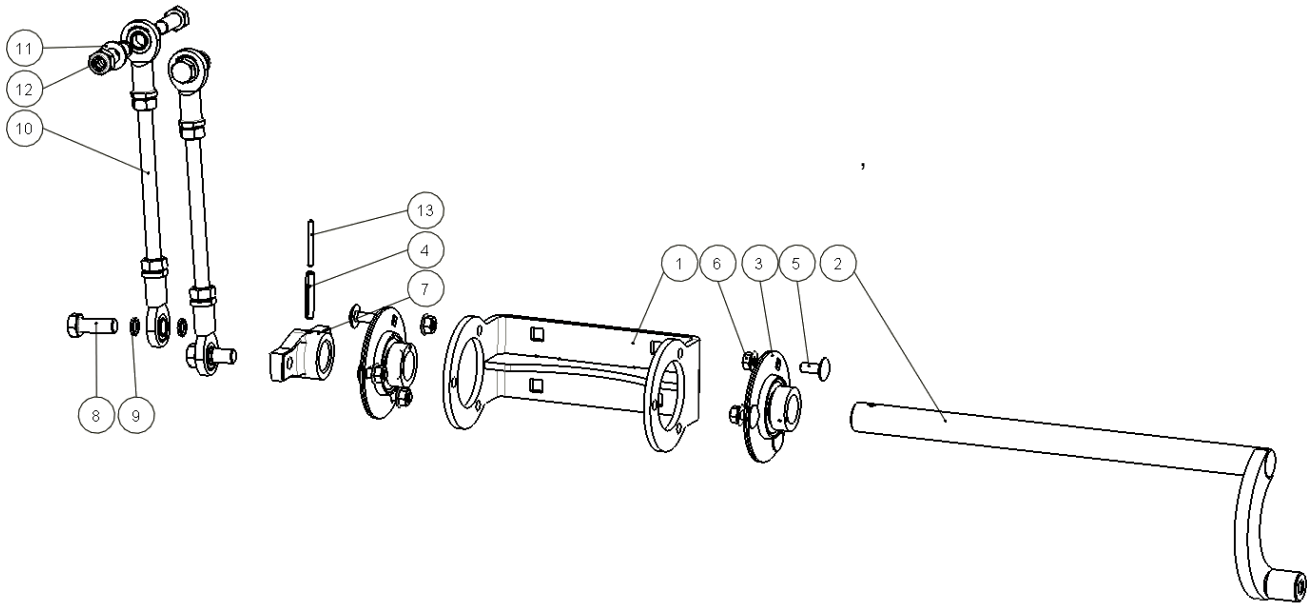
Pos.	Number	Description	Technical details	Qty.
1	16608	Bar complete	RH	1
	16609	Bar complete	LH	1
2	18359	Plug 40x25 black		1
3	54370	Knife	L=1355 mm MY2018	2
4	18343	Knife guide		8
5	18342	Plate		4
6	18350	Knife guard		1
7	16606	Crank arm		2
8	70076	Washer	DIN 125 A12	2
9	70022	Nut	DIN 985 M12	2
10	70109	Washer	DIN 125 A 8	12
11	70103	Nut	DIN 985 M8	12
12	16975	Linch Pin		1
13	096061	Washer	DIN 25201 for M8 8,6x16,6x2,7	4
14	096060	Bolt	DIN 933 M8x14	4
1-20	16605	Bar complete	RH	1
	16604	Bar complete	LH	1

Guard



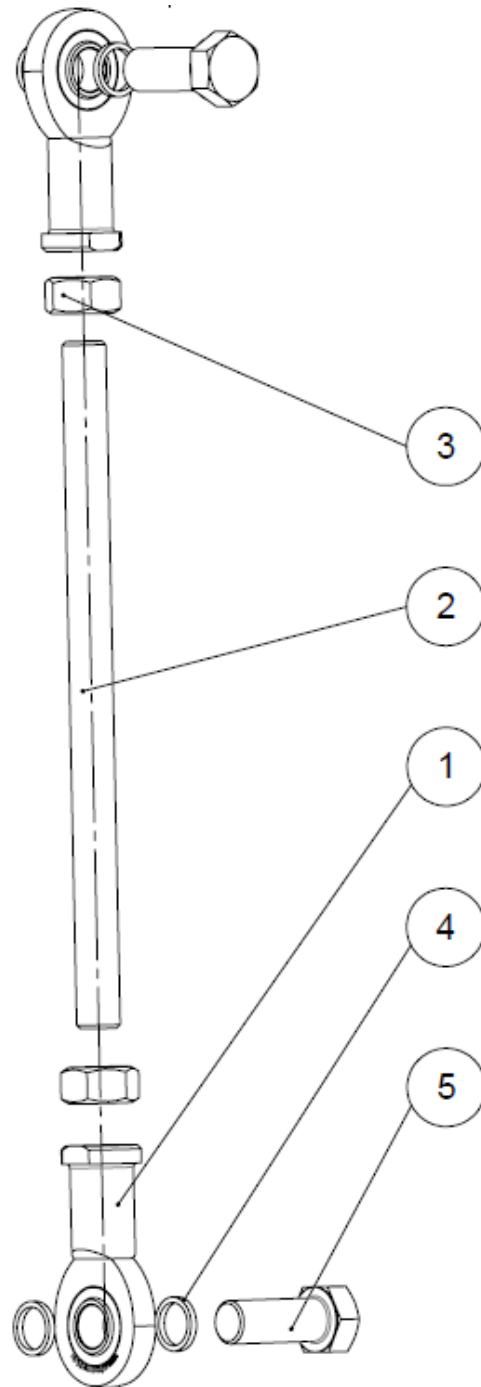
Pos.	Number	Description	Technical details	Qty.
1	16422	Guard LH		1
	16420	Guard RH		1
2	16135	Latch Angle		1
3	18240	Quick Latch		1
4	70028	Bolt	ISO 7380-2 M6x10	6
5	70074	Washer	DIN125 A6	8
6	70020	Nut	DIN 985 M6	8
7	18233	Hinge	80x42x1,5	2
8	70043	Bolt	DIN 6921 M8x16	2
9	093624	Bolt	DIN 7500-1 M6x16	6
1-9	16525	Shield Assembly	LH	
	16557	Shield Assembly	RH	

Drive Shaft



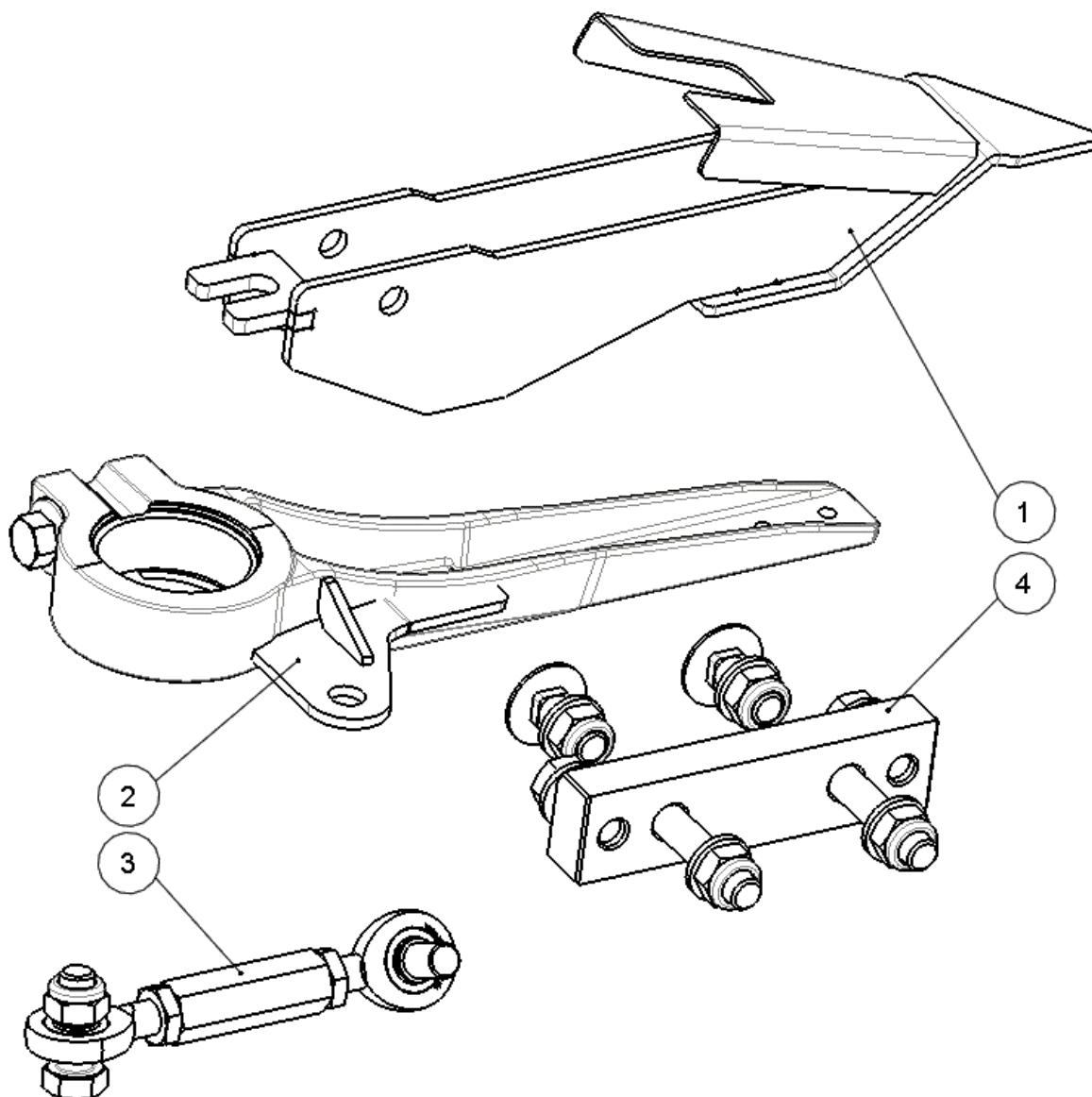
Pos.	Number	Description	Technical details	Qty.
1	28183	Bearing Block		1
2	16434	Drive Shaft	LH	1
	16432	Drive Shaft	RH	1
3	50757	Bearing Set	B-BF 25	2
4	70171	Roll Pin	7x40	1
5	70511	Bolt	DIN 603 M8x20	6
6	70005	Nut	DIN 6923 M8	6
7	28197	Drive hub		1
8	50356	Bolt M12x32	DIN 931 M12x45	4
9	18388	Spacer		8
10	28134	Drive rod	M12+GIR	2
11	70076	Washer	DIN 125 A12	2
12	70022	Nut	DIN 985 M12	2
13	70094	Roll Pin	ISO 8752 4x40	1
1-13	16405	Assembly Driveline	LH	
	16440	Assembly Driveline	RH	

Drive Rod



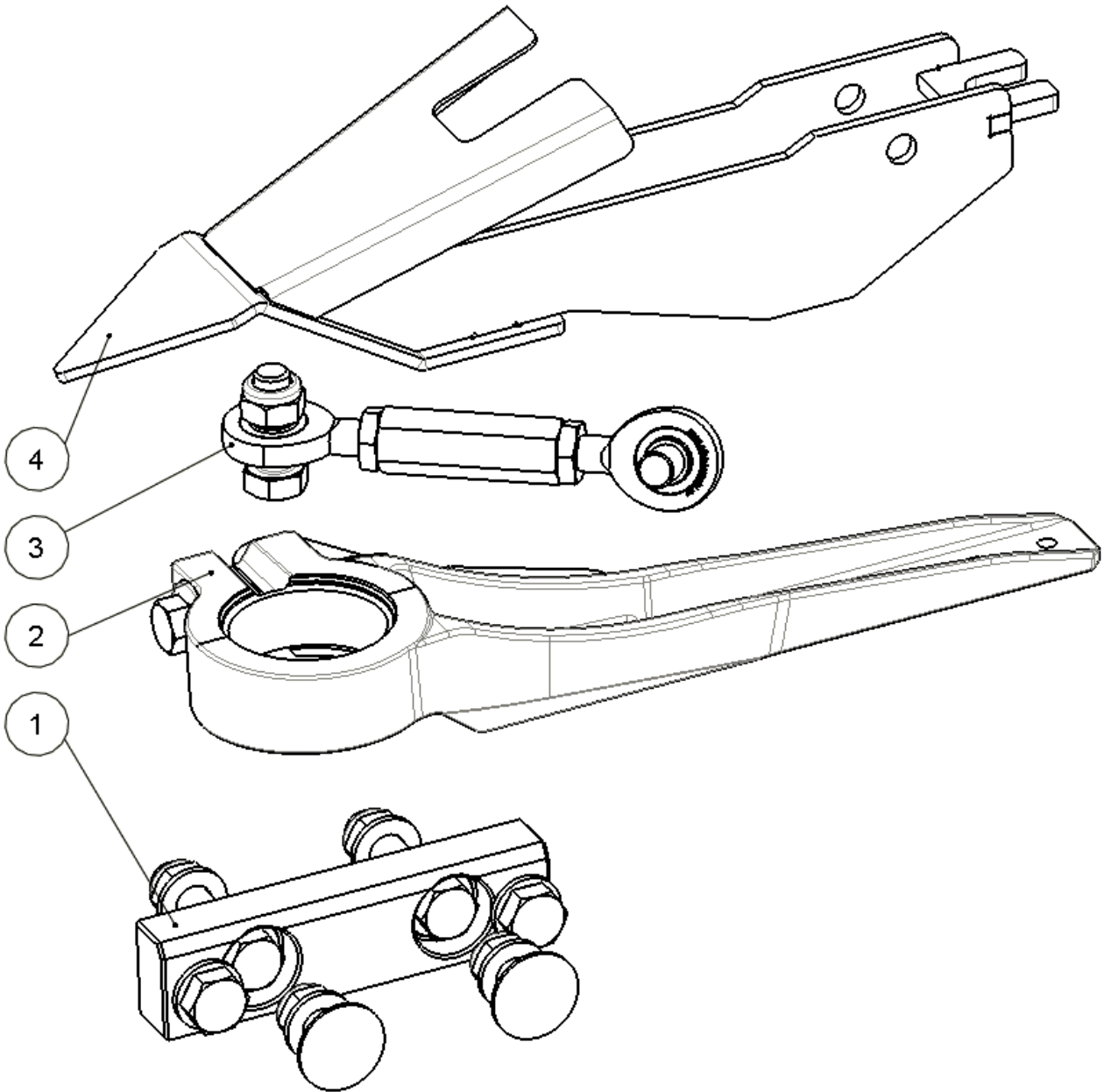
Pos.	Number	Description	Technical details	Qty.
1	18302	Rod End	GIR12DO ISO12240-4	2
2	28135	Threaded Rod	M12x190	1
3	091664	Nut	DIN 934 M12	2
1-3	28134	Drive Rod M12 + GIR	incl. Pos. 1-3	2
4	18388	Spacer		4
5	50356	Bolt M12x32	DIN 931 (shorted)	2

Accessory Kit Side Knife RH



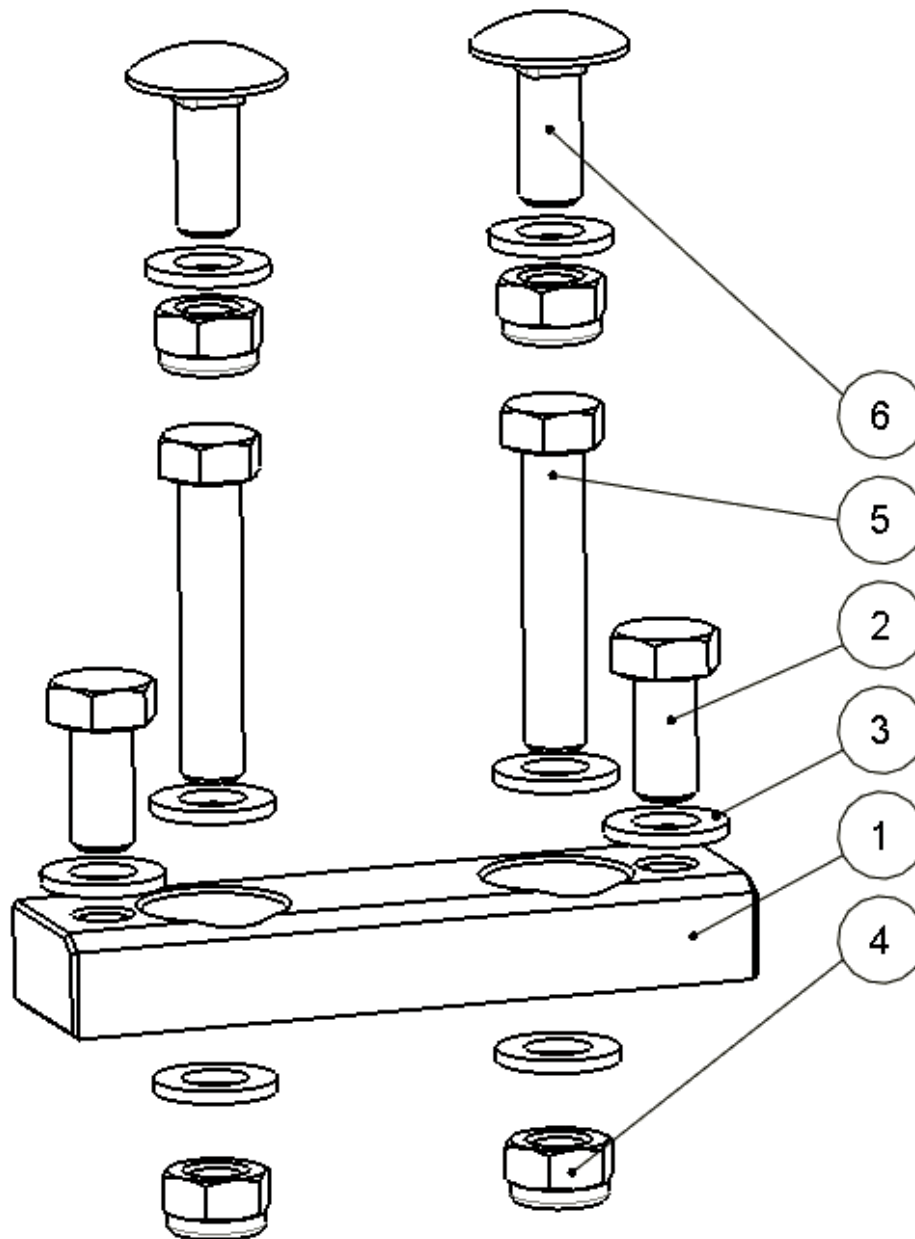
Pos.	Number	Description	Technical details	Qty.
1	16644	Divider	Single Drive	1
2	16476	Knife Head RH	Dual Drive	1
3	16485	Tie Rod	Single Drive	1
4	16431	Mounting Bracket incl. bolts		1
1-5	16429	Accessory Kit Side Knife	RH	

Accessory Kit Side Knife LH



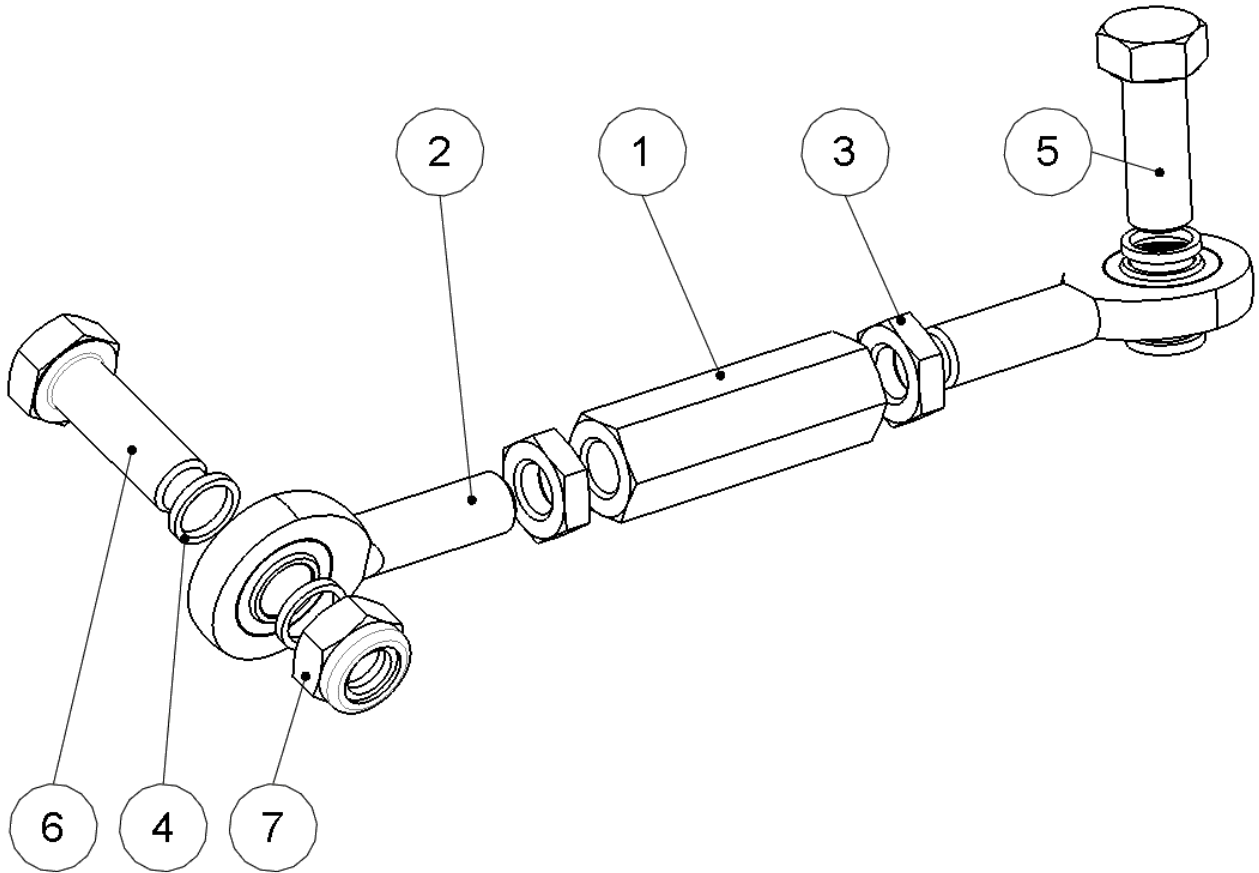
Pos.	Number	Description	Technical details	Qty.
1	16431	Mounting Bracket incl. bolts		1
2	16472	Knife Head	LH	1
3	16485	Tie Rod		1
4	16644	Divider		1
1-4	16430	Accessory Kit Side Knife	LH	

Mounting bracket



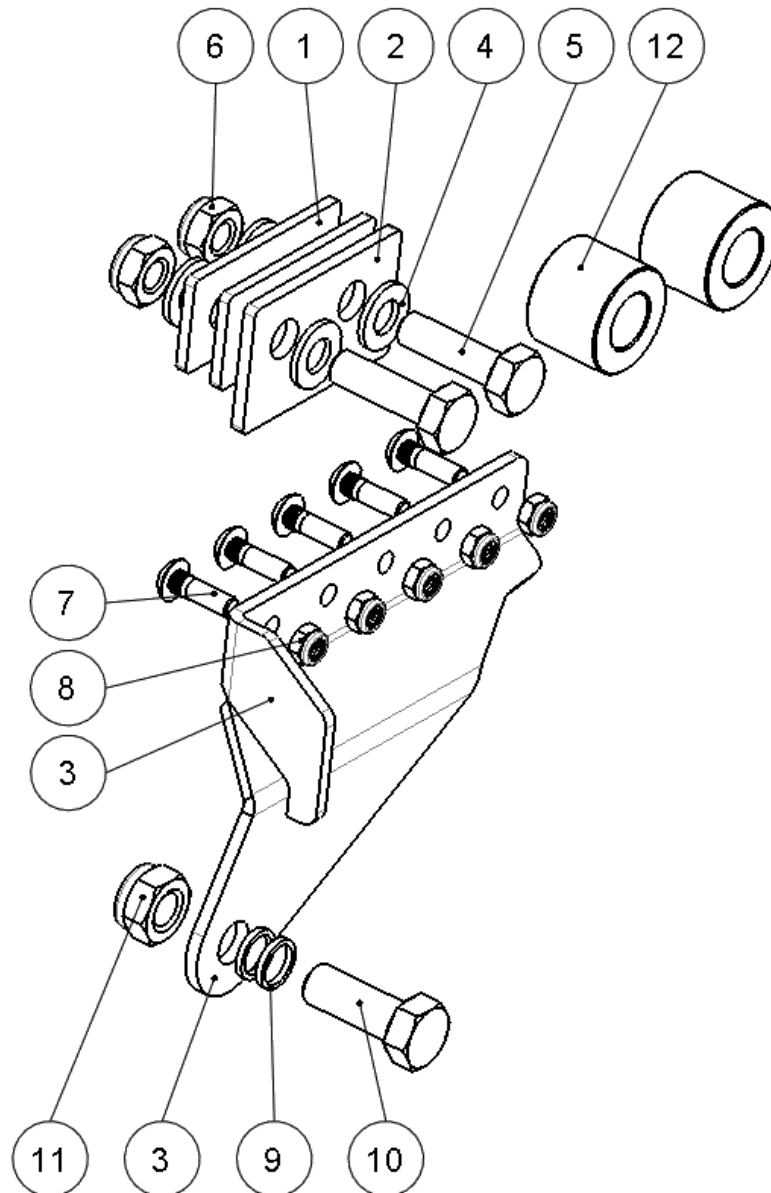
Pos.	Number	Description	Technical details	Qty.
1	16411	Mounting Bracket		1
2	70121	Bolt	DIN 933 M12x25	2
3	70363	Washer	DIN 125 A12	8
4	70022	Nut	DIN 985 M12	4
5	70301	Bolt	DIN 931 M12x60	2
6	70168	Bolt	DIN 603 M12x30	2
1-6	16431	Mounting Bracket incl. bolts		

Tie Rod



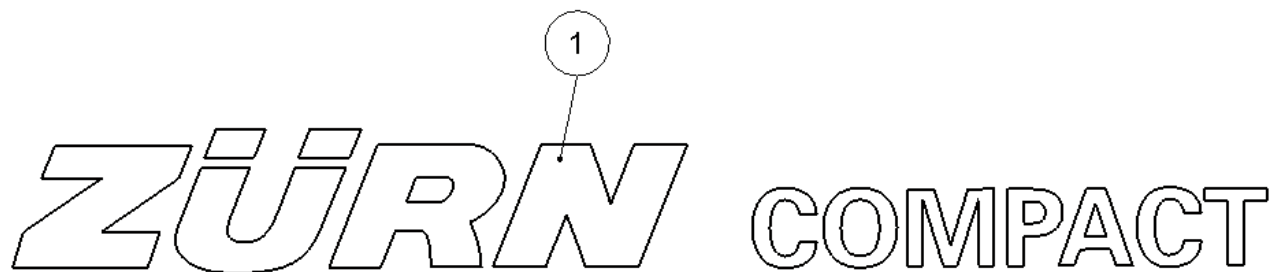
Pos.	Number	Description	Technical details	Qty.
1	70861	Nut	M12x60 8	1
2	21008	Joint bearing	DIN ISO 12240-4 M12x54	2
3	70008	Nut	DIN 439 M12	2
4	18388	Spacer		4
5	50356	Bolt M12x32	DIN 931 M12x45	1
6	70120	Bolt	DIN 933 M12x35	1
7	70022	Nut	DIN 985 M12	1
1-7	16485	Tie Rod		

Option Single Drive



Pos.	Number	Description	Technical details	Qty.
1	16648	Plate bottom 3,5mm		2
2	16649	Plate up 4mm		1
3	16414	Drive plate single Drive		1
4	70338	Washer	DIN 125 A10	4
5	70613	Bolt	DIN 933 M10x35	2
6	70021	Nut	DIN 985 M10	2
7	93310	Pan Head bolt	M6x20 with milled shaft	5
8	70020	Nut	DIN 985 M6	5
9	18388	Spacer		2
10	50356	Bolt M12x32	DIN 931 M12x45 (shorted)	1
11	70022	Nut	DIN 985 M12	1
12	53109	Bushing	33,7 x 17 l=24	2
1-12	16386	Option-Kit Single Drive		

Decal



Pos.	Number	Description	Technical details	Qty.
1	16229	Decal Compact		1

General terms of guarantee

Zürn Harvesting GmbH & Co. KG Kapellenstraße 1 D-74214 Schöntal-Westernhausen herewith certifies

each buyer of a new Zürn Harvesting machine purchased from an authorised dealer, that the materials and workmanship of this machine will be guaranteed to the conditions specified below, providing that the machine is put into operation and maintained in accordance with the specifications in the operating instructions.

The guarantee period is one year from the date of delivery and is valid for up to 500 operating hours within this period.

The date of the invoice to the end user as well as the date on the declaration of commissioning, signed by the dealer and customer and returned to the company are decisive.

The guarantee embraces only the reimbursement or repair of the parts and reimbursement of work time required effect the repair, based on the repair times allowed by Zürn Harvesting, under the prerequisite that the fault was determined by our technical customer service department and was acknowledged by Zürn Harvesting to be attributable to faulty materials or workmanship.

The following cases are exempted from guarantee:

- Damages, that are attributable to normal wear and tear, negligence, carelessness, improper use, incorrect maintenance and/or if the machine was involved in an accident, lent to another user or put to another use than that for which it was intended.
- The guarantee will be rendered null and void if technical modifications are made to the machine without the express permission of Zürn Harvesting or if spare parts other than original Zürn Harvesting spare parts are used and/or if repairs were not carried out by an authorised dealer.
- Zürn Harvesting will accept no liability for damages to the machine or its equipment caused during transportation or loading up by any transport company and this outside the specified guarantee period. Machines, equipment and parts are shipped at the risk of the recipient.
- Zürn Harvesting will accept no responsibility for possible personal injury, e.g. for injuries to the owner of the machine or third parties.
- Further to this, Zürn Harvesting will not pay compensation for losses of harvest or cuts in profit as a result of a defect, a hidden fault or machine failure.

The purchaser is responsible for the following and will bear the costs:

- The everyday maintenance of the machine, i.e. lubrication, checking and correcting oil levels, minor adjustment work, etc.
- Travelling and mileage allowances for service technicians
- Transporting the machine, the parts or equipment to the place of repair and returning them to the place of use
- Expendable parts like drive belts, tyres, blades, cutter discs, disc clutches, etc. are not covered by the guarantee.

General terms of guarantee

The terms of the guarantee are dependent upon precise observance of the following regulations by both the dealer and the purchaser:

- The machine must be put into service for the first time by the dealer, in accordance with Zürn Harvesting regulations.
- The guarantee card (machine card) completed by the dealer and customer must be returned to Zürn Harvesting by post or e-mail as soon as the machine has been delivered to the customer.
- Applications for guarantee claims must be formulated on the corresponding Zürn Harvesting form and presented to Zürn Harvesting by the dealer within one calendar month.
- The application must be completed legibly and must contain the following information:
 - Name, address and dealer customer number
 - Name and address of the customer
 - Exact machine type and designation
 - Complete serial number of the machine
 - Date of delivery to the customer
 - Date of the claim
 - Number of operating hours or acreage harvested by the machine
 - Exact description of the damage and information regarding the probable cause
 - Quantity, item numbers and description of damaged parts
 - Invoice number and date of the parts replaced
- The parts reported as damaged must be returned to Zürn Harvesting free of charge for appraisal, complete with a copy of the guarantee claim application. Any costs incurred for returning the parts replaced will be borne by the sender.
- Use and maintenance of the machine must comply with the specifications in the operating instructions. Lubricants used must be of the qualities and quantities of those specified by Zürn Harvesting.
- The decision of Zürn Harvesting is, irrespective of the guarantee claim application, final and irrevocable and the purchaser is obliged to accept this decision.
- If the guarantee claim application is refused, the dealer has a period of 15 days, starting from the day the Zürn Harvesting decision was received, to demand return of the damaged parts. Once this period has elapsed, the parts will be systematically destroyed.

Additional provisions and restriction of liability

- The guarantee is non-transferable to third parties without the prior, written permission of Zürn Harvesting.
- The dealer has neither the right nor the authority to enter into a commitment in the name of Zürn Harvesting, whether expressly or implied.
- The technical support for repair of the machine given by Zürn Harvesting or their representatives excludes any further liability whatsoever by Zürn Harvesting and has no influence whatsoever on the existing terms of guarantee.
- Zürn Harvesting reserves the right to modify the design of the machine without prior notice. It is not obliged to transfer such modifications to machine which have already been sold or are in use.
- Furthermore, due to the rapid development of the state of the art, no guarantee can be given for the machine descriptions contained in these operating instructions or other technical leaflets and data sheets.
- The existing guarantee excludes any further obligations by Zürn Harvesting, be it a legal or contractual obligation, whether expressly or implied. The obligations of Zürn Harvesting can not under any circumstances exceed the provisions specified in the previous paragraphs. Zürn Harvesting will accept no liability in particular and will not pay compensation for materials and personal injury, loss of crops or liabilities incurred in any way or for any consequences of whatever nature resulting from hidden defects or constructional faults within the framework of the existing terms of contract.

Torques for metric bolts

Bolts	Grade 4.8				Grade 8.8 or 9.8				Grade 10.9				Grade 12.9			
	Oiled ^a		Dry ^b		Oiled		Dry ^b		Oiled		Dry ^b		Oiled		Dry ^b	
Size	N•m	lb-in	N•m	lb-in	N•m	lb-in	N•m	lb-in	N•m	lb-in	N•m	lb-in	N•m	lb-in	N•m	lb-in
M6	4.7	42	6	53	8.9	79	11.3	100	13	115	16.5	146	15.5	137	19.5	172
M8	11.5	102	14.5	128	22	194	27.5	243	32	23.5	40	29.5	37	27.5	47	35
M10	23	204	29	21	43	32	55	40	63	46	80	59	75	55	95	70
M12	40	29.5	50	37	75	55	95	70	110	80	140	105	130	95	165	120
M14	63	46	80	59	120	88	150	110	175	130	220	165	205	150	260	190
M16	100	74	125	92	190	140	240	175	275	200	350	255	320	235	400	300
M18	135	100	170	125	265	195	330	245	375	275	475	350	440	325	560	410
M20	190	140	245	180	375	275	475	350	530	390	675	500	625	460	790	580
M22	265	195	330	245	510	375	650	480	725	535	920	680	850	625	1080	800
M24	330	245	425	315	650	80	820	600	920	680	1150	850	1080	800	1350	1000
M27	490	360	625	460	950	700	1200	885	1350	1000	1700	1250	1580	1160	2000	1475
M30	660	490	850	625	1290	950	1630	1200	1850	1350	2300	1700	2140	1580	2700	2000
M33	900	665	1150	850	1750	1300	2200	1625	2500	1850	3150	2325	2900	2150	3700	2730
M36	1150	850	1450	1075	2250	1650	2850	2100	3200	2350	4050	3000	3750	2770	4750	3500

The tightening torques given are guideline values. Do NOT use these values if a different torque or another securing method is specified for a specific application. For stainless steel bolts and nuts for stirrup bolts, see specific instructions. Tighten locking nuts with plastic insert or edge-raised steel locking nuts to the corresponding torque for dry bolts and nuts given in the table unless otherwise instructed.

Shear pins are designed to break at a certain load. When replacing shear pins, use only pins of the same grade. When replacing bolts and nuts, make sure that equivalent parts of the same or a higher grade are used. Tighten higher-grade nuts and bolts to the same torque as the originally used parts. Make sure that the thread is clean and the bolts correctly fitted. If possible, oil normal and galvanised nuts and bolts (except for locking nuts and wheel studs or nuts) unless specified otherwise for the specific application.

“Oiled” means that a lubricant, such as engine oil, is applied to the bolts or that phosphatized or oiled bolts with a size from M20 are used.

“Dry” means the use of normal or galvanised bolts without lubrication or bolts with a size between M6 and M18 that are zinc-coated.

**EG- Konformitätserklärung nach Maschinenrichtlinie
2006/42/EG**

Bitte sorgfältig aufbewahren, jedoch nicht im Fahrzeug

**EU CERTIFICATE OF CONFORMITY
According to Machinery Directive 2006/42/EG**

Please keep safely, not inside the vehicle

Hiermit bestätigt die Hereby declares	Zürn Harvesting GmbH & Co. KG	
in alleiniger Verantwortung dass das landwirtschaftliche Anbaugerät the full responsibility for the agricultural implement	Fabrikmarke Brand	Zürn Harvesting GmbH
	Typ Type	Seitentrenner
genehmigt in approved in	Schoental	
am on	19.01.2018	
durch den by the	Hersteller / manufacturer	
den grundlegenden Sicherheits- und Gesundheitsanforderungen der Richtlinie 2006/42/EG entspricht. to full fill the complete safety- and health requirements according to machinery directive 2006/42/EG.		
Zur sachgerechten Umsetzung der in den EU-Richtlinien genannten Sicherheits- und Gesundheitsanforderungen wurden folgende Normen herangezogen: For proper implementation according to the EU- Directives for health and safety requirements, the following standards were used:	DIN EN ISO 4254-1 (06/06) DIN EN 745 (08/99)	
Geschehen zu Done at	Schoental	
am on	05/03/17	
	 Rolf Zürn Harvesting Harvesting, Geschäftsführer, CEO	

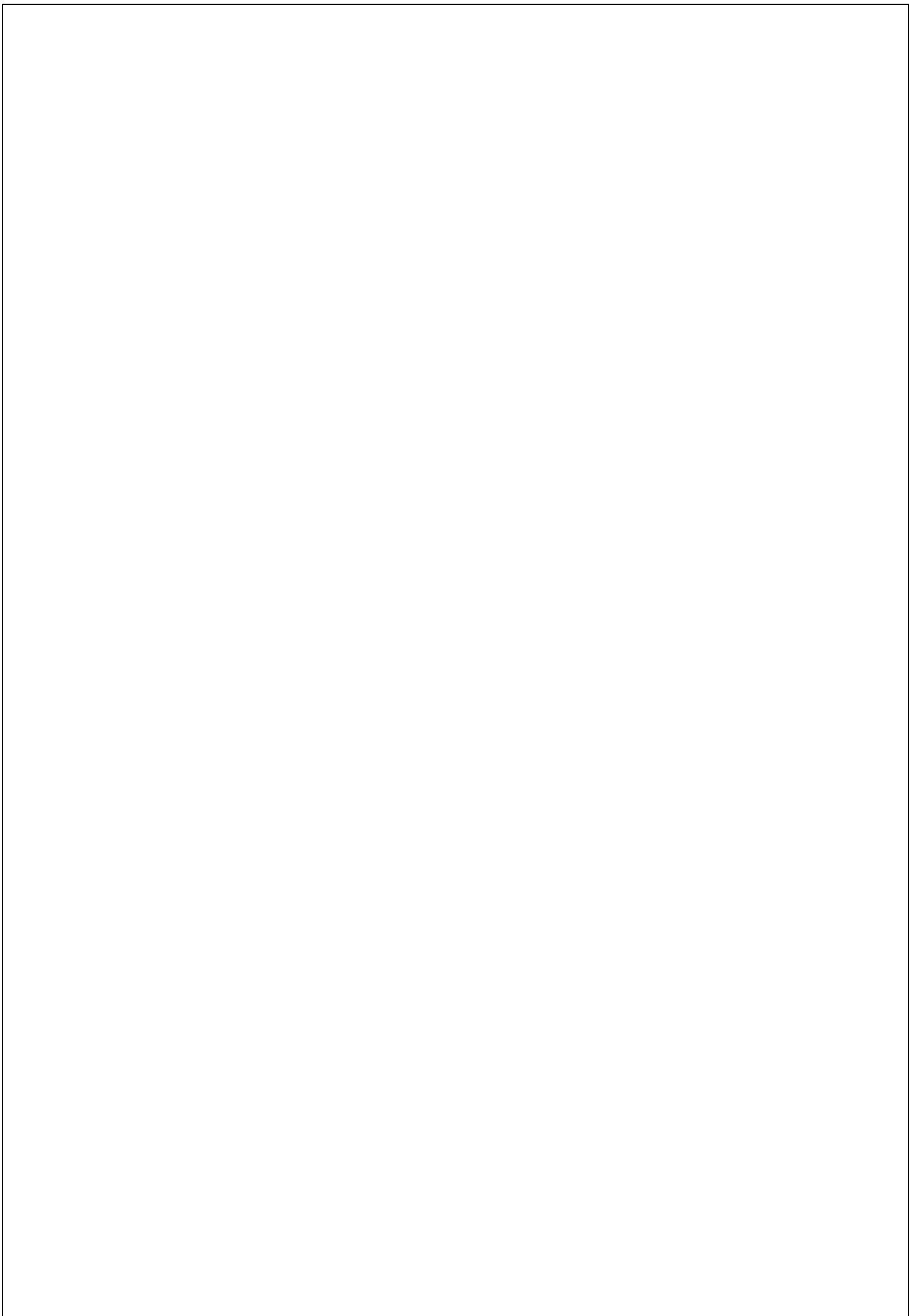
Contact

Ersatzteilbestellung / Spare parts order / Commande des pièces:

Tel.: 0049 (0) 7943 / 9105-42

Fax. 0049 (0) 7943 / 9105-33

E-Mail: parts@zuern.de



ZÜRN

HARVESTING